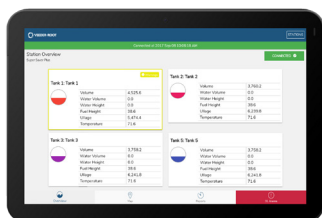


Remote Connectivity — Access and Manage Critical Data

The remote access features for the TLS-450PLUS, TLS4 and TLS4B Automatic Tank Gauges (ATGs) deliver critical inventory and site data when and where it's needed.



Remote Connectivity Options

The Web-Enabled Interface provides browser based access to the ATG with almost all functionality that is available on the TLS graphical user interface.

THE REMOTE VIEW app is available on Android and iOS mobile devices for accessing inventory, delivery and alarm data real-time, as it is continuously connected to the ATG.

THE PLUS VIEW app is similar to THE REMOTE VIEW app and is intended for more remote or mobile applications. It automatically pulls data every 15 minutes for checking status without pulling a constant stream of data.

The Information Needed for Remote Access

Whether you are connecting to the TLS-450PLUS and/or TLS4 series ATGs through the Web-Enabled Interface, THE PLUS VIEW or THE REMOTE VIEW apps (free for download on the App Store or on Google Play), there is certain information required for setting up remote access to your site data. There is also additional information that is optional, but recommended for an optimal user experience.

Required Fields

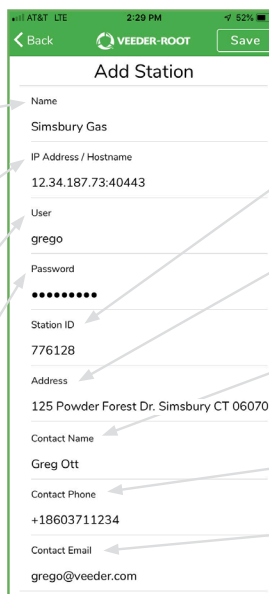
Name is required for setting up a site. Should be a site specific name.

IP Address/Hostname is required. Must be the public IP Address of the ATG or router.

User is required for connection. This is the username for your profile on the ATG. Do not use default username.

Password is required for connection. This is the password for your profile on the ATG. Do not use default password.

For security reasons, do not use default username and password for your automatic tank gauges, and use a different password for each site.



Optional Fields

Station ID is used as an additional ID or nickname for the site.

Address for the site of the ATG should be in street, city, state, zip format.

Contact Name is the primary contact for the ATG, and could be used to connect with primary contact for alarm or inventory management.

Contact Phone is the primary phone number of your identified contact.

Contact Email is the primary email of your identified contact.



A John M. Ellsworth Company

John M. Ellsworth Co., Inc.

P.O. Box 240072
8700 West Bradley Road
Milwaukee, WI 53224

800-333-3331 **PHONE**
800-563-8848 **FAX**

info@jmesales.com **E-MAIL**
www.JMESales.com **WEB**