

TLS-450PLUS



Your ATG Data at Your Finger Tips

The remote access features of the TLS-450PLUS deliver critical inventory and site data when and where it's needed. Monitor alarm notifications and inventory levels in real-time so immediate action can be taken. Resolve issues remotely to reduce dispatching and maintenance costs.

With multiple ways to connect to TLS-450PLUS, you have the tools needed to react faster and reduce site down time.



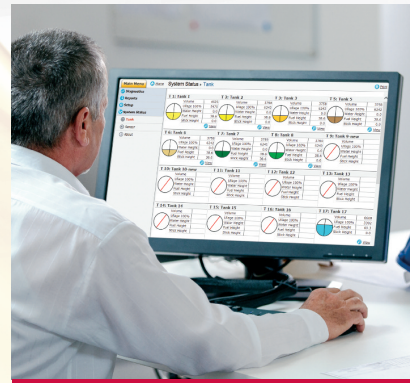
THE PLUS VIEW



THE REMOTE VIEW



WEB-ENABLED



THE PLUS VIEW is a free mobile app for Android and Apple iOS that connects you directly to tank gauge data no matter where you are. Now managers and owners can easily monitor their fuel site inventory and alarms while they are off site.

- Station overview for an immediate status check on tank inventory
- Reports tab allows quick access to Alarm, Inventory, and Last Delivery reports
- Map view to allow for easy navigation between sites

THE REMOTE VIEW application provides a real-time connection to fuel inventory and alarms. This app is available for Android and Apple iOS and is formatted specifically for a better experience in store for site personnel.

- App updates with ATG data as activity happens on site in real-time
- View Active Alarms with one touch
- Audible and on-screen notifications to identify issues easily and quickly
- Regularly monitor tank levels
- For wired and wireless applications

Take action to resolve on site issues remotely by connecting to your ATG settings and diagnostics using the web-enabled feature. View your site's status, run reports and make adjustments without even being on site.

- Modify ATG Configurations and Access Diagnostics
- Print Wet Stock Management and Compliance Reports
- Email Notifications for Alarms and Reports



A John M. Ellsworth Company

John M. Ellsworth Co., Inc.

P.O. Box 240072
8700 West Bradley Road
Milwaukee, WI 53224

800-333-3331 **PHONE**
800-563-8848 **FAX**

info@jmesales.com **E-MAIL**
www.JMESales.com **WEB**