

TLS-450PLUS



THE PLUS is an ATG Made Simple

An Automatic Tank Gauge is critical to running your business and proper use is vital for an efficient operation. That is why the TLS-450PLUS was developed with the end user in mind. From setup, to every-day operation, *THE PLUS* is designed to be intuitive and easy to navigate. Backed by our expert training staff, your employees will be confident when using *THE PLUS*.



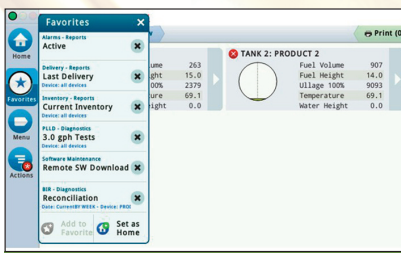
WORKFLOW WIZARD



Set-up and resolution made simple. Whether it's a technician setting up your ATG or an employee troubleshooting an issue, the Workflow Wizard is there to guide them. With step-by-step instructions like this, there is no need to find a manual or a computer to navigate the *THE PLUS*.

- Step-by-Step Instructions for Easy Installs
- Built-in Help Guides for Troubleshooting
- Touch-Screen Navigation

FAVORITES



Spend less time in the backroom and more time in front of customers by utilizing the favorites section of *THE PLUS*. Quickly access commonly used areas like reporting and diagnostics to get the job done while minimizing ATG training for employees.

- Choose Your Own Home Screen
- Ability to Save Up to 6 Screens as Favorites
- Multiple User Logins to Set Your Screen, Your Way

VIRTUAL TRAINING



A trained staff can increase productivity, improve safety and boost morale. Get expert training from the people who work with *THE PLUS* every day. Through Veeder-Root's Virtual Training program your staff can learn everything from basic gauge navigation to feature specific functionality to ensure proper knowledge and use of *THE PLUS*.

- A No Cost Training Solution
- Up to 24 Students at One Time
- Customized Training Sessions to Meet Your Specific Needs



A John M. Ellsworth Company

John M. Ellsworth Co., Inc.

P.O. Box 240072
8700 West Bradley Road
Milwaukee, WI 53224

800-333-3331 **PHONE**
800-563-8848 **FAX**

info@jmesales.com **E-MAIL**
www.JMEsales.com **WEB**