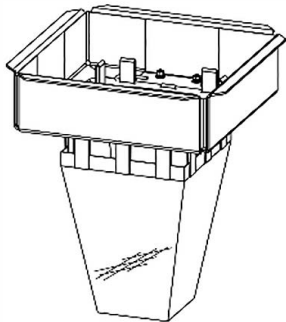
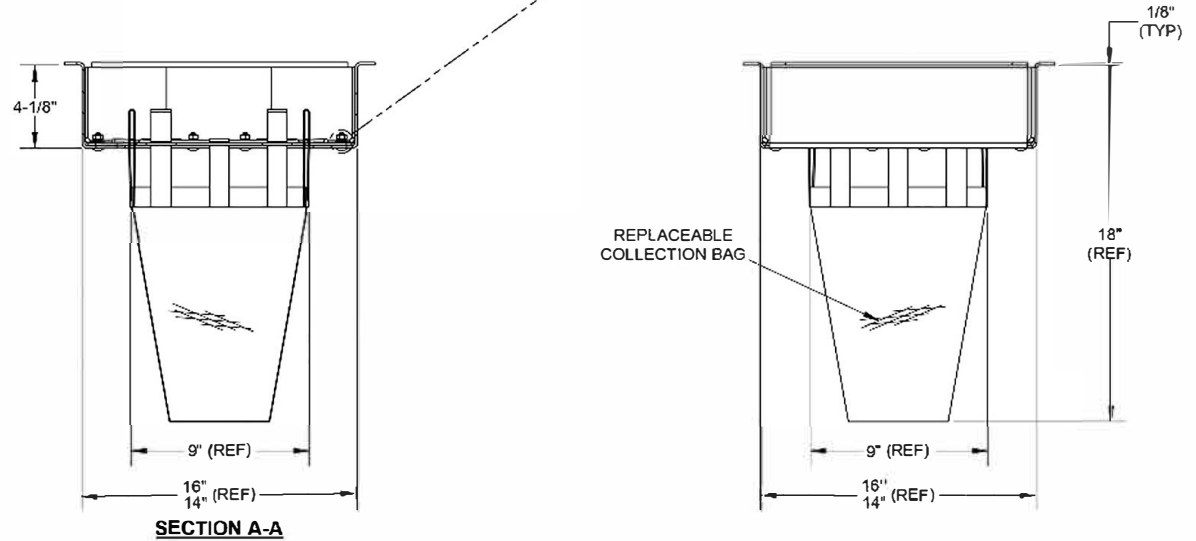
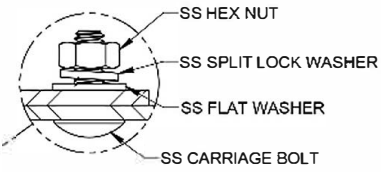
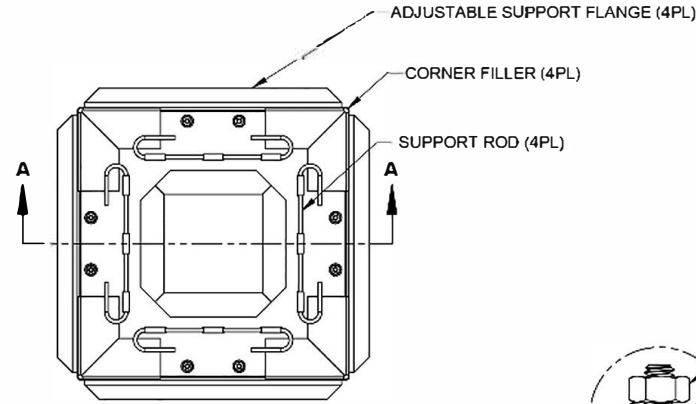


**NOTES:**

1. TOTAL WEIGHT, EMPTY: 15 LBS (MAX)
2. MATERIALS:
  1. FRAME: ALUMINUM ALLOY, 5000 SERIES
  2. COLLECTION BAG: GEOTEXTILE, 40 US SIEVE
  3. HARDWARE: STAINLESS STEEL
3. PERFORMANCE CHARACTERISTICS:
  1. DEBRIS CAPACITY: 0.34 CU. FT
  2. FILTERED FLOWRATE: 335 GPM (0.75 CFS)
  3. BYPASS FLOWRATE: 540 GPM (1.2 CFS)
4. CLEAR OPENING RANGE:
  1. MINIMUM SIZE: 14" X 16"
  2. MAXIMUM SIZE: 14" X 16"
5. TYPICAL INSTALLATION:
 

CAREFULLY REMOVE THE STORM GRATE. MEASURE CATCH BASIN FRAME CLEAR OPENING AND ADJUST FLANGES TO REST ON GRATE SUPPORT LEDGE. INSTALL DRAIN GUARD AND VERIFY EACH FLANGE IS SECURE AND THE UNIT IS SNUG WITH LITTLE MOVEMENT IN THE DRAIN. INSTALL CORNER FILLERS USING PROVIDED DOUBLE-SIDED TAPE. REINSTALL THE STORM GRATE DIRECTLY ON THE ADJUSTABLE SUPPORT FLANGES.
6. RECOMMENDED MINIMUM VAULT DEPTH 2" BELOW STORM GUARD



**REFERENCE VIEW**

|           |           |          |              |
|-----------|-----------|----------|--------------|
| PROJECT   | DATE      | APPROVAL | DATE         |
| MATERIAL  | 3/16/2022 | OWN      | R.VY         |
| SEE NOTES |           | DATE     | 3/16/2022    |
|           |           | SCALE    | 1/8" = 1'-0" |
|           |           | SHEET    | 1 OF 1       |