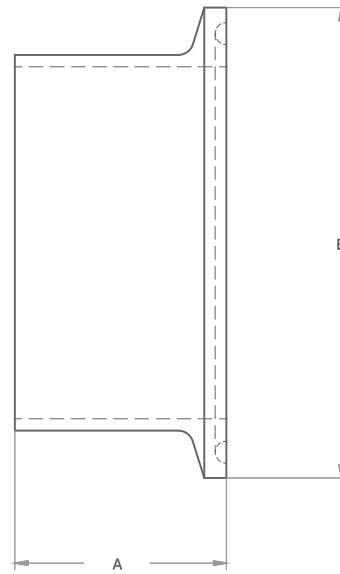


Overview

- Long welding ferrule for butt weld fittings
- Length consistent across sizes



LONG WELDING FERRULE - 14AMP



Diameter		WT		Product Code		Dim A		Dim B		Weight Per Unit		Standard Pack Size
mm	inches	mm	inches	304	316	mm	inches	mm	inches	kg	lbs	
25.4	1.00	1.6	0.065	1064LF	1066LF	28.6	1.126	50.5	1.988	0.07	0.15	5
38.1	1.50	1.6	0.065	1564LF	1566LF	28.6	1.126	50.5	1.988	0.07	0.15	5
50.8	2.00	1.6	0.065	2064LF	2066LF	28.6	1.126	64.0	2.520	0.09	0.20	5
63.5	2.50	1.6	0.065	2564LF	2566LF	28.6	1.126	77.5	3.051	0.12	0.26	5
76.2	3.00	1.6	0.065	3064LF	3066LF	28.6	1.126	91.0	3.583	0.15	0.33	5
101.6	4.00	2.0	0.083	40204LF	40206LF	28.6	1.126	119.0	4.685	0.25	0.55	5
154.4	6.00	2.7	0.109	60274LF	60276LF	31.8	1.500	167.0	6.575	0.59	1.30	5

TOLERANCES

Dim A $\pm 1.25\text{mm}$