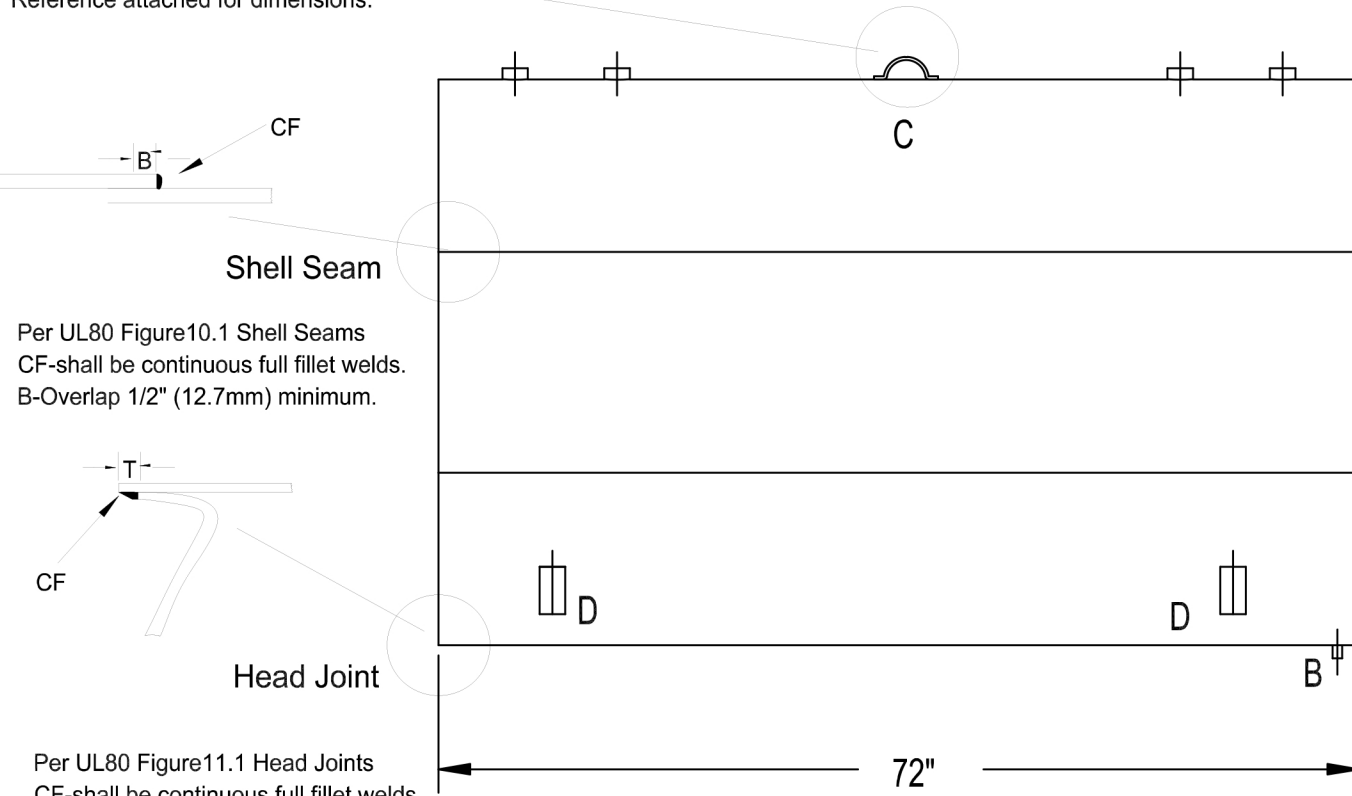
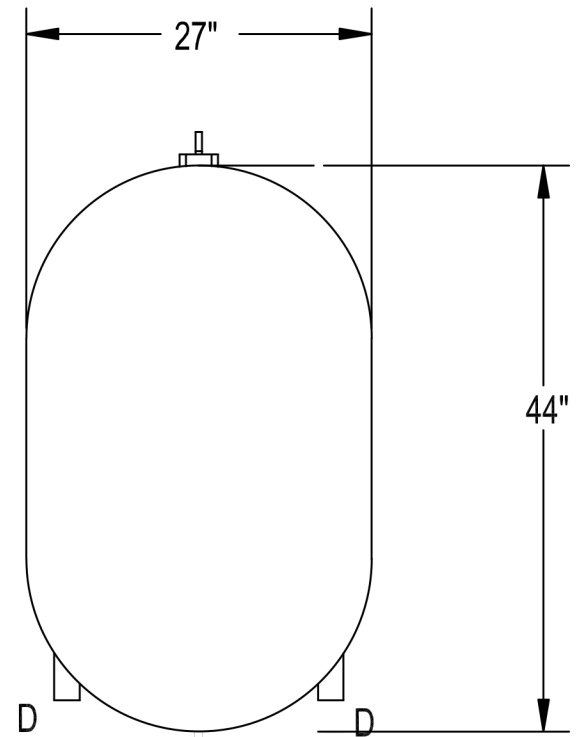



Phoenix Metals Small Series 2-900-LUG  
 Maximum load capacity per lug: 6800 lbs.  
 Reference attached for dimensions.



Per UL80 Figure 10.1 Shell Seams  
 CF-shall be continuous full fillet welds.  
 B-Overlap 1/2" (12.7mm) minimum.

Per UL80 Figure 11.1 Head Joints  
 CF-shall be continuous full fillet welds.  
 T-Not less than thickness of shell.



 <b>Underwriters Laboratories Inc.</b> <small>LISTED</small>	<b>TITLE:</b> <h1 style="margin: 0;">AB-330-12V</h1>	DESCRIPTION: ABOVE GROUND, SINGLE WALL Note: 12 GA. STEEL OR HEAVIER	FINISH: SURFACE PREP: SPCC SP-3; ONE SPRAY COAT OF PRIMER
	<b>LEGEND: ID - (QTY. OF OPENINGS) PART</b> A - (4) 2" FNPT Flange    B - (1) 1/2" FNPT Drain C - (1) Pressed Lift Lug    D - (4) 1-1/4" NPT L Leg Tank Bracket	CAPACITY:    322 GALLONS	APPROX. WEIGHT:    340 lbs ± 5%