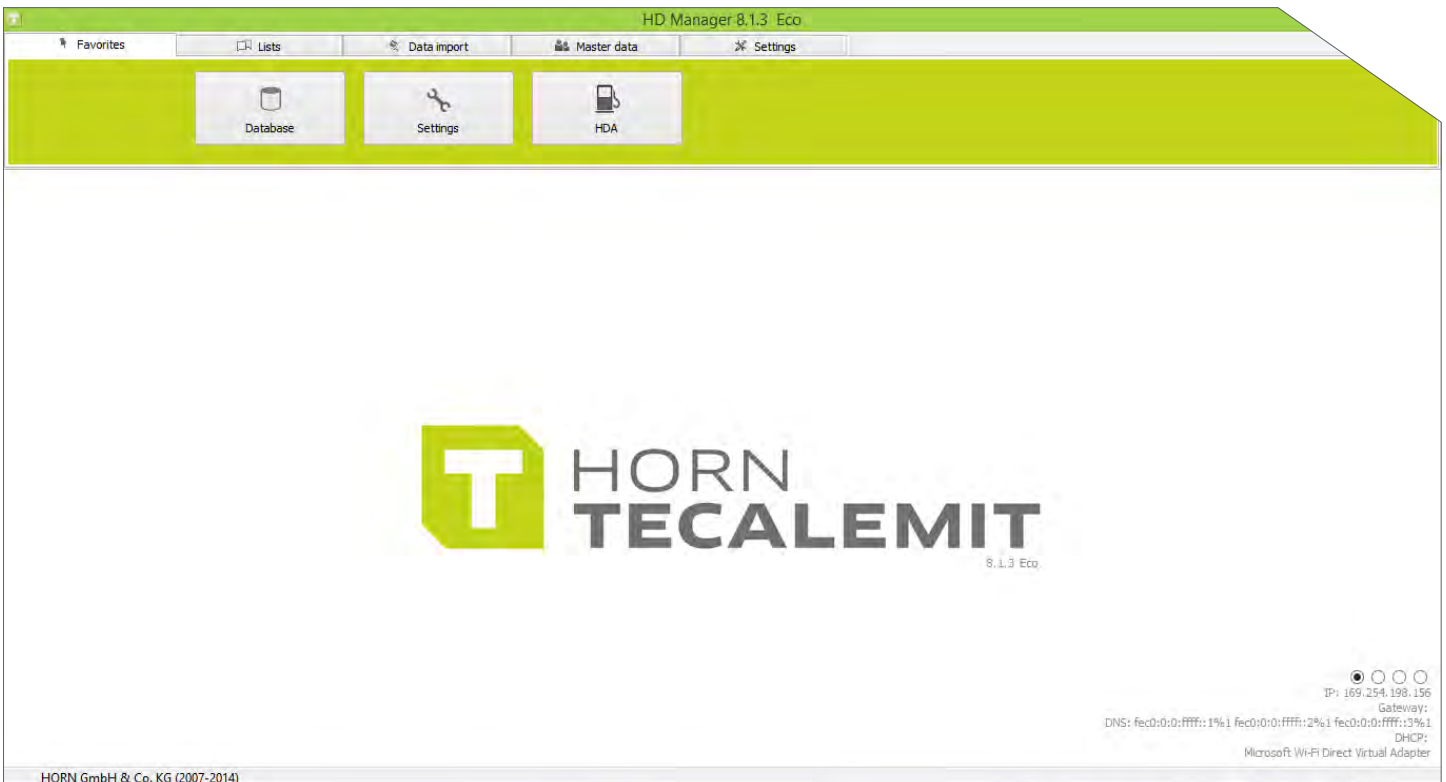


GO WITH THE FLOW.



QUICK GUIDE

SOFTWARE USER GUIDE- WONDERBOX



HD MANAGER version 8



GO WITH THE FLOW.



WELCOME

Thank you for your recent purchase! We couldn't be more excited to receive you into our TECALEMIT family, which we believe, is something very special. We know there are other options out there, but we'd like to think that we won your business for any number of reasons. Whether it was our high-quality products, our dependable customer service, our knowledge of the Industry, or our dedication to customizing solutions to best fit your needs. We always want to ensure your expectations are not only met but exceeded with every piece of equipment we put out.

We work hard to stay ahead of the Industry, constantly updating our product manuals, creating videos to guide you through set-ups and installs, and most importantly - listening to your feedback. Inviting you to become a part of our inner circle is important because we create and design with you in mind. Our passion is based on our company core pillars which you will find throughout our entire organization: Performance, Innovation, Technology, and Service.

Follow us on Twitter, Like us on Facebook, browse through our online picture gallery on Flickr, and read our blogs online. It's all for you! These tools are carefully crafted to inform, engage, and resolve. If you have an idea, comment, or question - we always encourage you to say so. We fully acknowledge that we cannot grow without your help. So keep watching our YouTube channel, call us, or shoot us an email - hold us responsible for evolving our products so you too, can evolve and grow.

We appreciate your support, input, and business. We look forward to building a relationship with you and your customers and welcome you to the new TECALEMIT experience!

With deepest gratitude,

Tony Llopiz

President

SAFETY INSTRUCTIONS

The software has been programmed in accordance with state of the art and recognized safety specifications. Nevertheless, there is a danger of loss of data if it is used inappropriately. It is therefore essential to act in accordance with these safety instructions, and in particular with those sections identified as warnings.

WARNING NOTICES AND SYMBOLS

In this guide, the following signs are used for highlighting important information.



Special information



Special information on “do’s and don’ts” for damage prevention.



Attention

ORGANIZATIONAL MEASURES

This quick guide should always be kept readily available at the site of operation! Each person concerned with the installation and use of the software must have read and understood the entire manual.

QUALIFIED PERSONNEL

Persons who install or use the software must be appropriately qualified to carry out this work. The areas of responsibility, competences, and supervision of the personnel must be precisely regulated by the operating company. If the personnel does not have the required knowledge, they must be trained and instructed. The operating company must also ensure that the contents of the operating manual are properly understood by the personnel.

SOFTWARE INSTALLATION

- ! Before installing new HD Manager 8 software, disable any windows anti-virus you may have and disable windows fire wall. Visit with your IT manager for future help.

You can also download the HD Manager from our resources tab on our website.
Visit us at: www.Tecalemitusa.com

COPYRIGHT



It is essential to read this guide before installation and use of the HD Manager software v 8
© TECALEMIT INC. A HORNGROUP COMPANY. ALL RIGHTS RESERVED

Text, graphics and layout copyright protected. Reproduction and copying, including in part, are only allowed with written permission. Technical changes reserved.



Insufficient knowledge of this guide may void your warranty.



TABLE OF CONTENTS

BEFORE YOU START

1

PARAMETERS / WINDOWS FIREWALL

CONNECTION SETUP

6

WIFI SETUP / LAN SETUP / USB SETUP

SOFTWARE SETUP

17

FUEL TERMINAL / DELIVERY POINT / VEHICLES & DRIVERS

EXPORT DATA TO WONDERBOX

24

COMPUTER → WONDERBOX

IMPORT DATA TO COMPUTER

27

WONDERBOX → COMPUTER

FUEL REPORTS

30

VIEW FUEL REPORT / EXPORT TO EXCEL



GO WITH THE FLOW.



BEFORE YOU START



PARAMETERS

1. Make sure the Wonderbox is powered up and all necessary connections have been made.
2. If you are not using the Auto Nozzle function in the system, make sure that this feature is turned off. At the Wonderbox, enter the master code to get into the system...once you are in the system, navigate the menu to the following areas: enter master data, 99999/ System / Refuel options / Nozzle switch / No /.
This is how you can navigate at the box controls to ensure nozzle switch is turned off if you are not using this function. Press the exit key until you return to the home screen for Driver info input.
3. Before you get started in the software, make sure that you change preferences to US units. Open your HD manager 8 software , and navigate to settings tab / now click on settings icon on the left / now click on units tab / set everything to gallons, miles, and inches.

Note: Now you are ready to proceed to setting up your system.



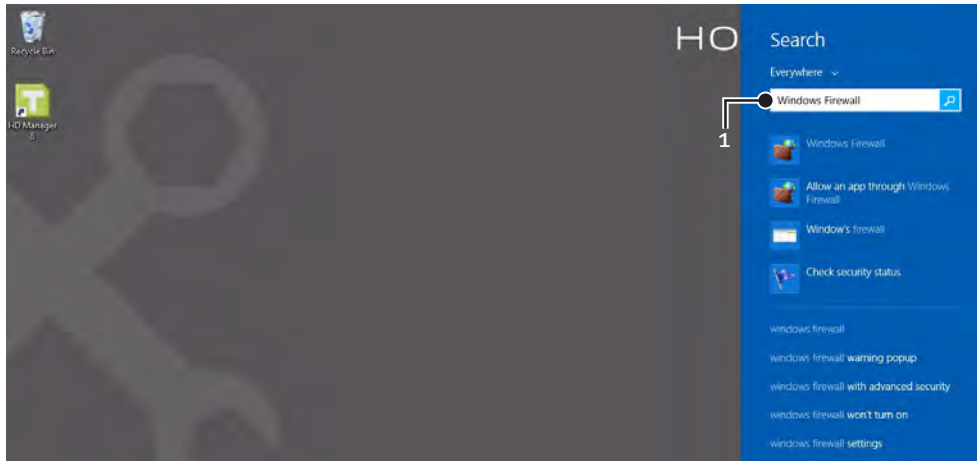
*** The next steps are for Wifi/LAN users only**

Before you start: Opening a port. (For Windows 7 & 8) Follow the steps from next pages.

WINDOWS FIREWALL

STEP 1

1. Search “Windows Firewall” on your computer.



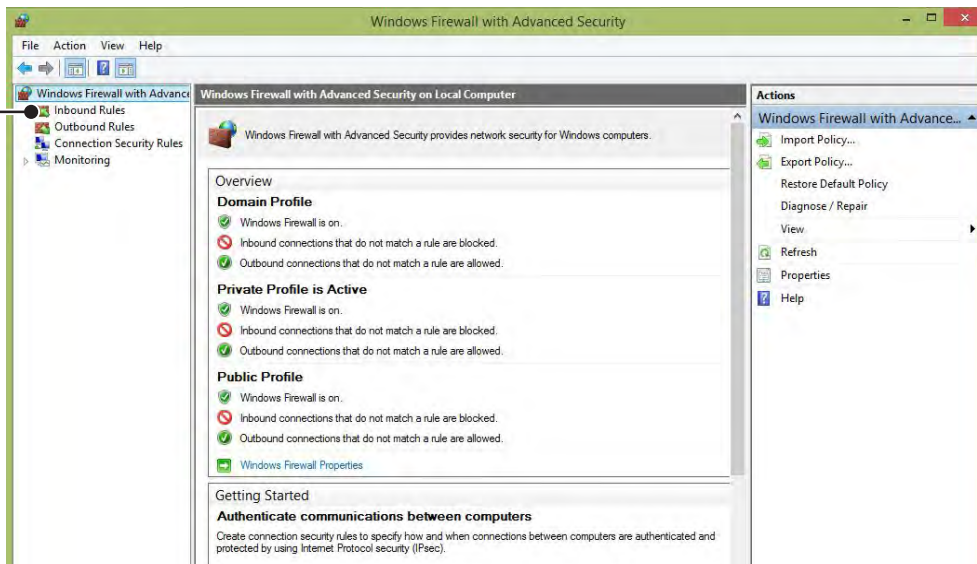
STEP 2

2. Press advanced settings.



STEP 3

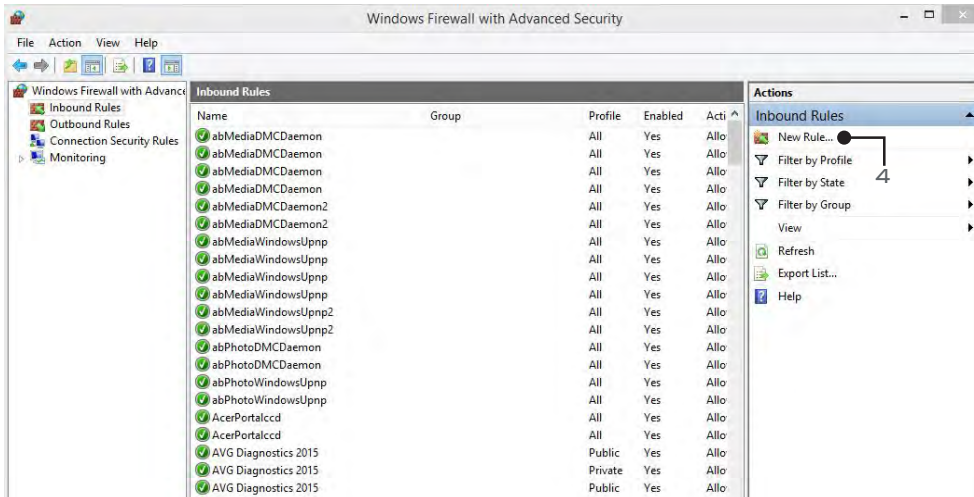
3. Press inbound rules.



WINDOWS FIREWALL

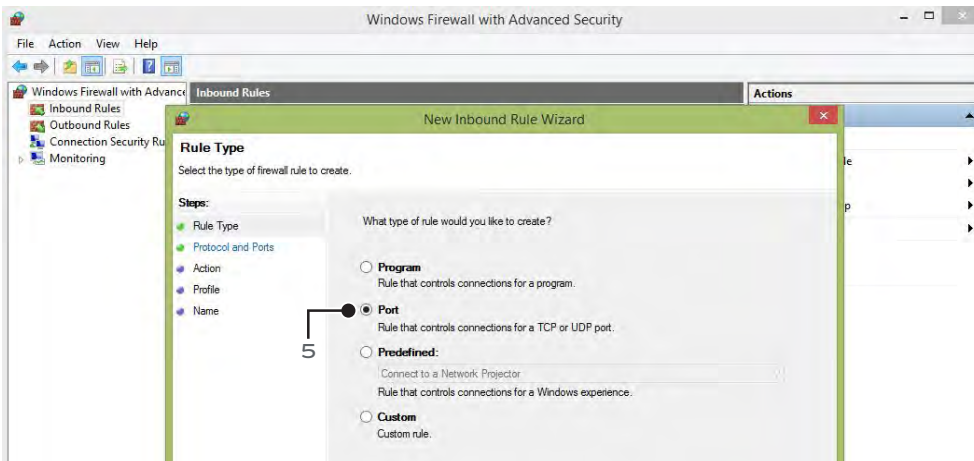
STEP 4

4. Press "new rule".



STEP 5

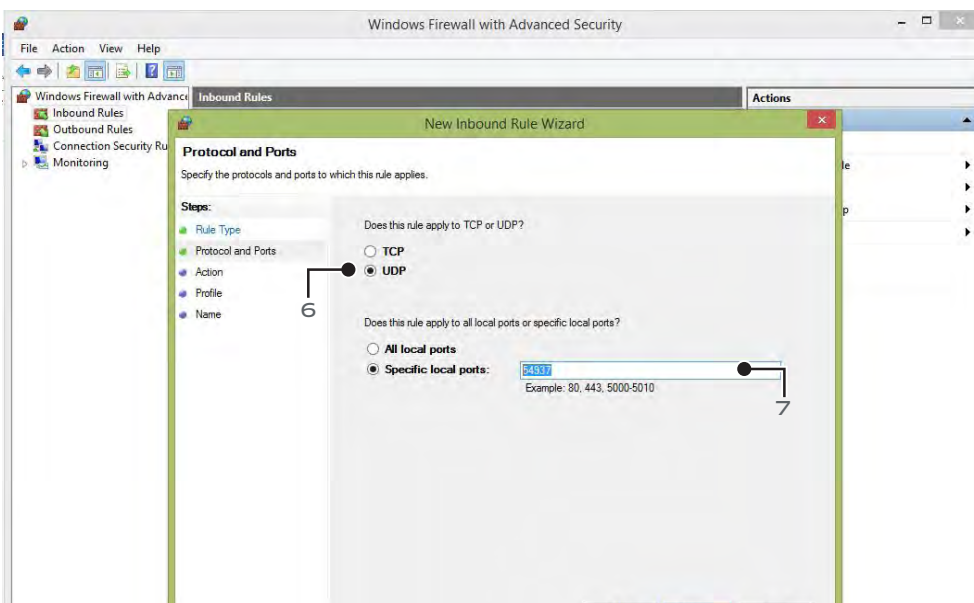
5. Press Port then click next.



STEP 6 & 7

6. Press UDP.

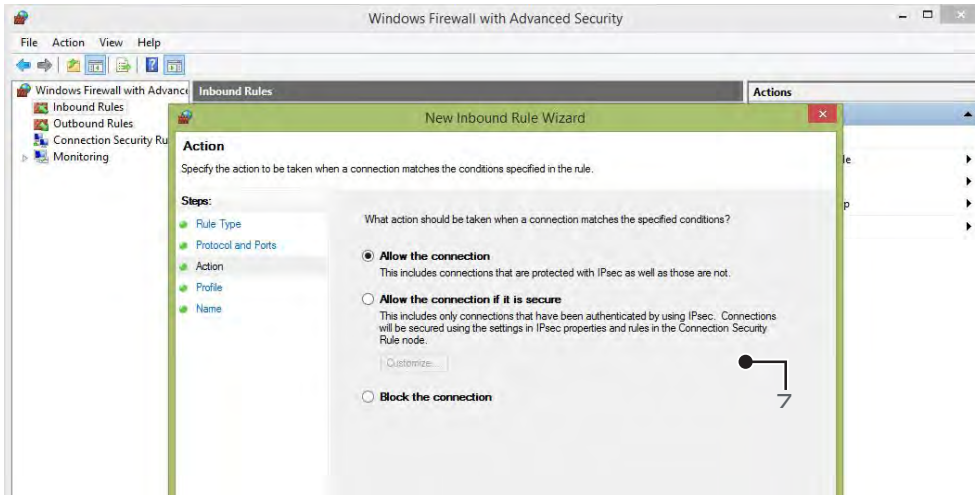
7. Type 54937 and press next.



WINDOWS FIREWALL

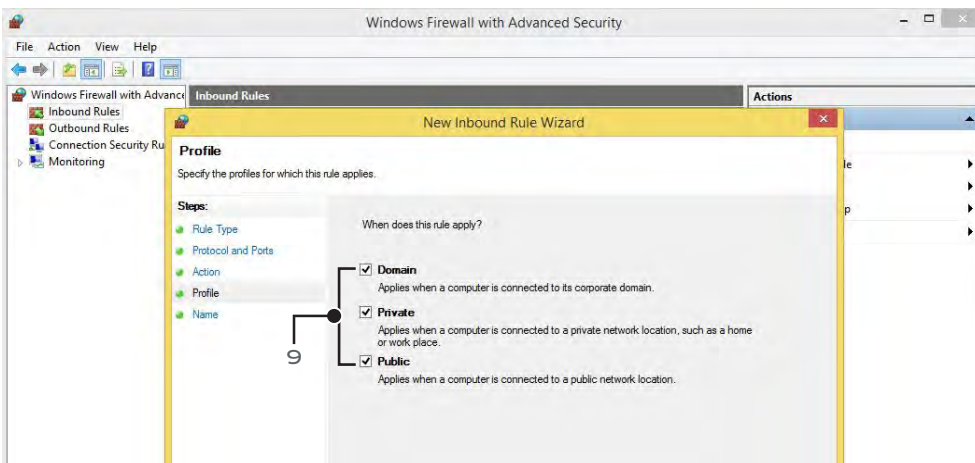
STEP 8

8. Select allow connection and click next.



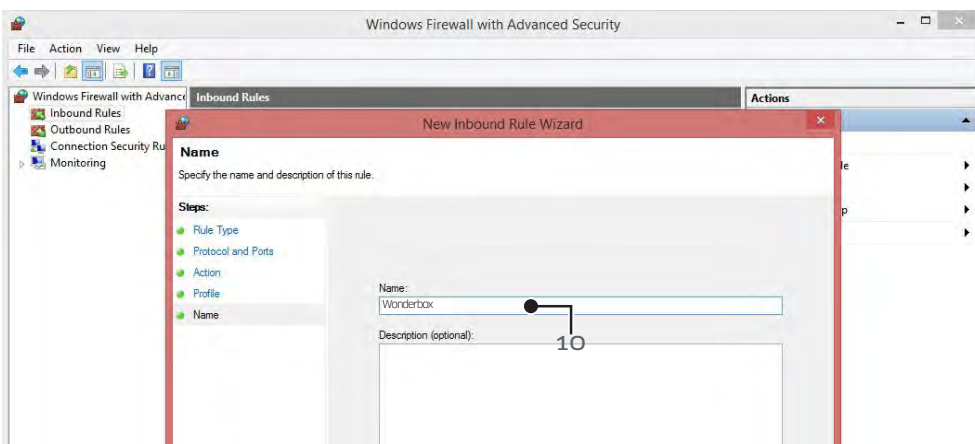
STEP 9

9. Check all network types and click next.



STEP 10

10. Name the rule (ie. Wonderbox) and press finish.



Congratulations you have configured the Windows firewall correctly!

GO WITH THE FLOW.

CONNECTION SET UP



GO WITH THE FLOW.

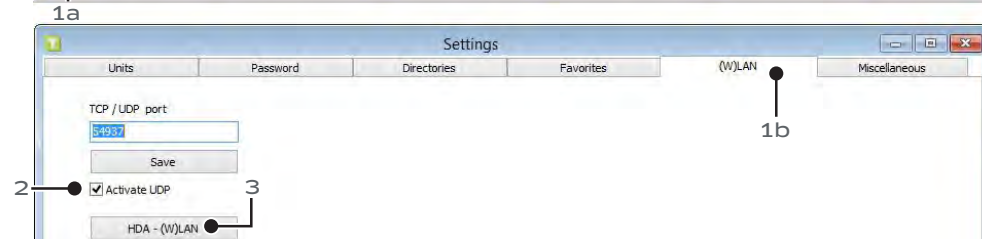
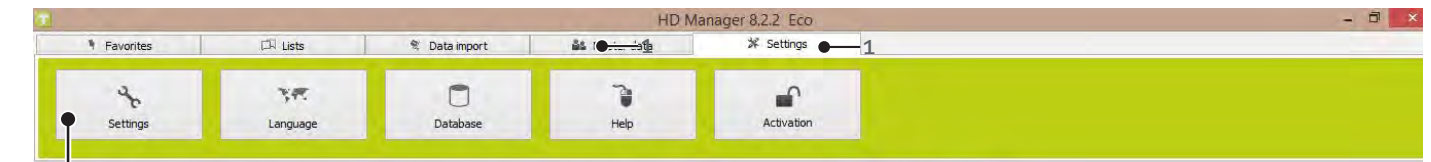
Wi-Fi SET UP



Note : You are ready to set up Wi-Fi connection to your Wonderbox.
Open your HD Manager 8 Software and proceed to the next Page.

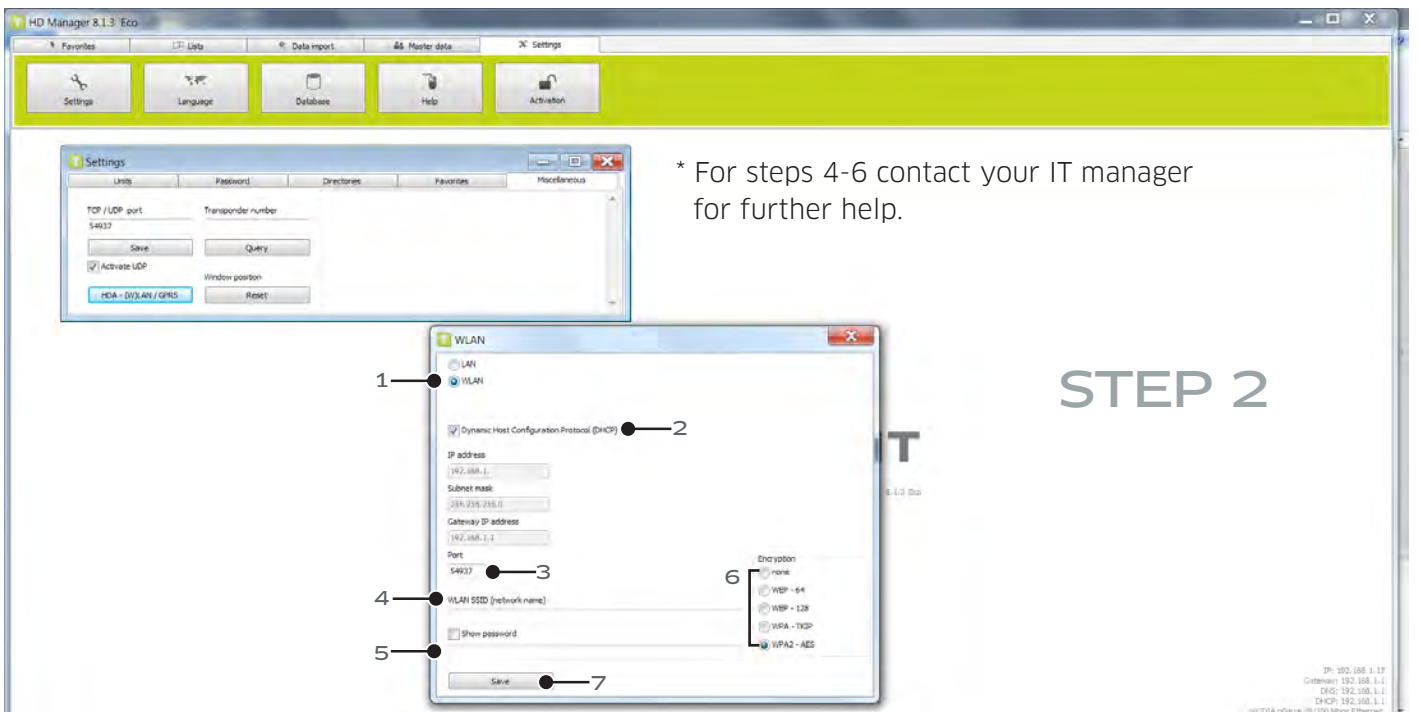


Wi-Fi SET UP



STEP 1

1. Click on settings to open up the category.
 - a. Click on settings sub category.
 - b. Click on (W)LAN tab.
2. Make sure "activate UDP" is checked.
3. Now click on HDA-(W) LAN for the next step.



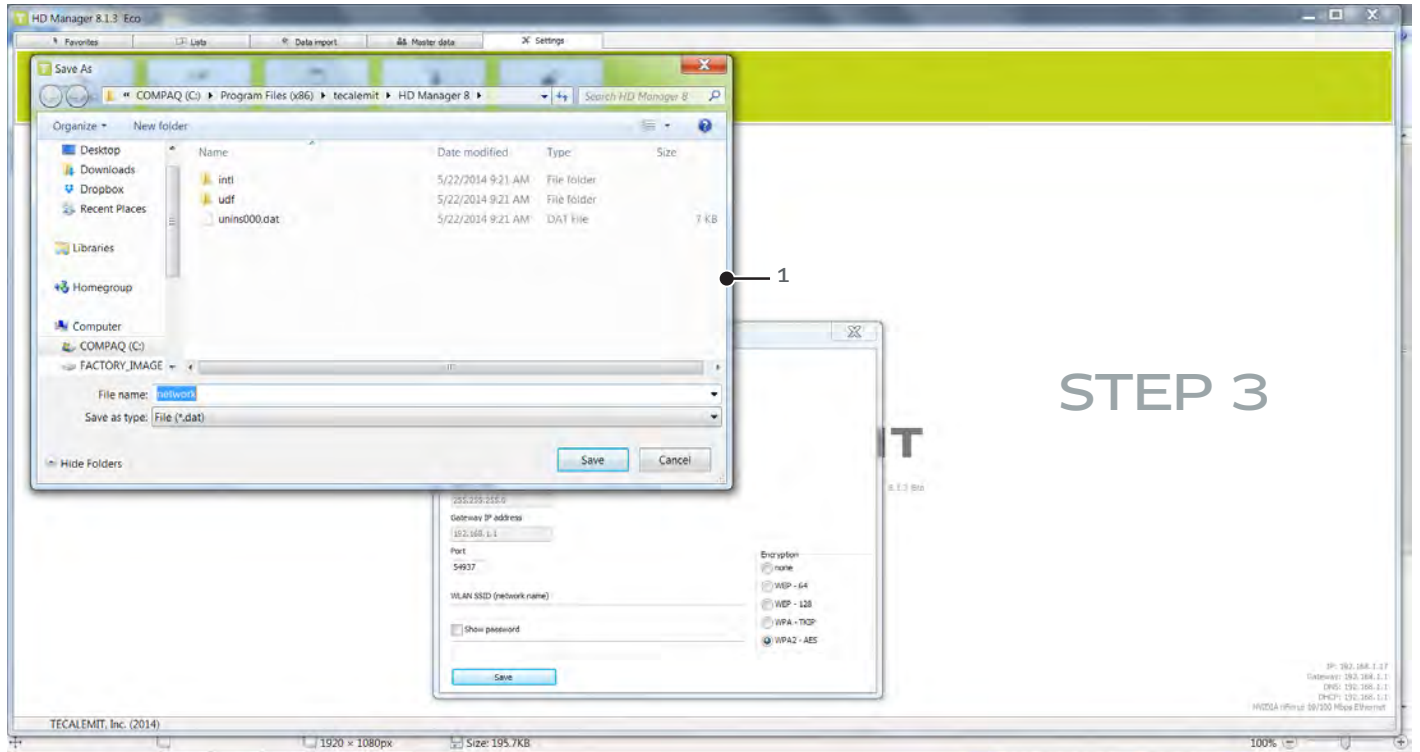
* For steps 4-6 contact your IT manager for further help.

STEP 2

1. Check WLAN.
2. Check (DHCP).
3. Make sure "54937" is entered in the port box.
4. Enter your Wi-Fi network name.
5. Enter your Wi-Fi network password.
6. Select your Wi-Fi network encryption.
7. Save and turn page for the next step.



Wi-Fi SET UP



1. Clicking “save” takes you to a new screen. Save the file named “network” to a TECALEMIT USB DRIVE. DO NOT CHANGE THE FILE NAME “NETWORK” TO SOMETHING DIFFERENT, THE Wonderbox WILL NOT RECOGNIZE IT.

2. Close ‘save file’ dialogue box. Take USB to Wonderbox.

Continue to next step.

! Make sure the file “network” was saved to a TECALEMIT USB key.



Wi-Fi SET UP


STEP 4

! Note : Use provided USB only. Follow steps below before inserting USB in Wonderbox.

! Note : Take USB key where you saved the “network” file name and walk to the Wonderbox.
DO NOT INSERT USB KEY YET.



1. Enter master code to access menu.
2. Scroll down to “system” and press enter.
3. Scroll down to “extended” and press enter.
4. Scroll down to “interface” and press enter.
5. Scroll down to “read config” and press enter.
6. Now insert memory stick (USB). The Wonderbox will read the information and will begin to search (connect with your Wi-Fi system).
7. Press exit button until you get to the first screen, unit will re-start.

 * Once connected to your network, proceed to page #11 to set up your new Wonderbox, drivers, and vehicles.

! Note : On your screen, if signal strength level indicator is more than 1%, you are good.

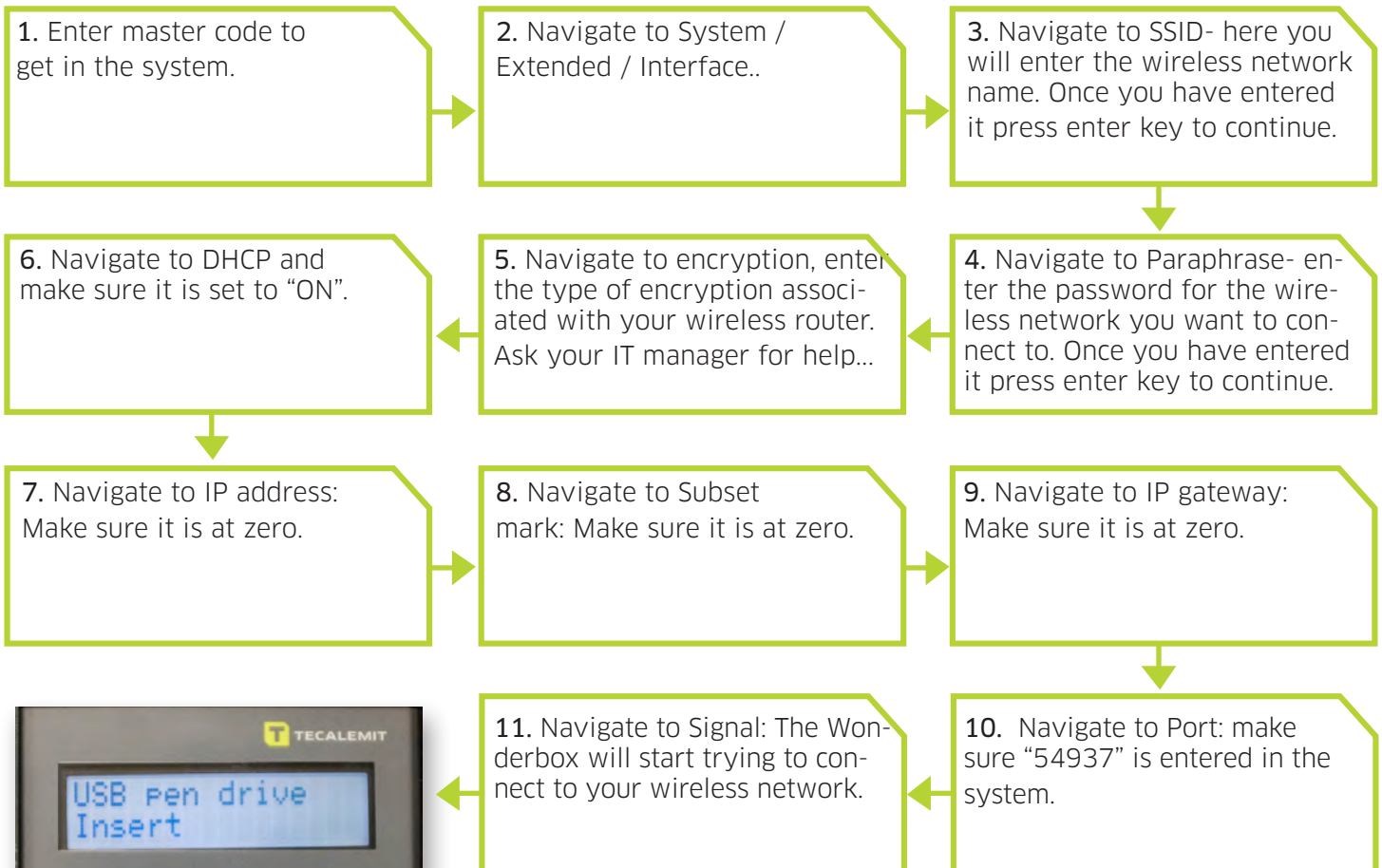
! Note : On your screen, if signal strength level indicator is 0%, check all network configuration data for your router.



Wi-Fi SET UP AT THE BOX

Note : If you are working without access to the software, you can set up the Wonderbox with Wi-Fi at the system. Follow the next steps:

****Note :** If you have already set up Wi-Fi through the software, you can skip this step.



Once connected to your network, proceed to page #11 to set up your new Wonderbox, drivers, and vehicles.



GO WITH THE FLOW.

LAN SET UP



Note : You are ready to set up your LAN connection to your Wonderbox. Open your HD Manager 8 Software and proceed to the next page.

LAN SET UP

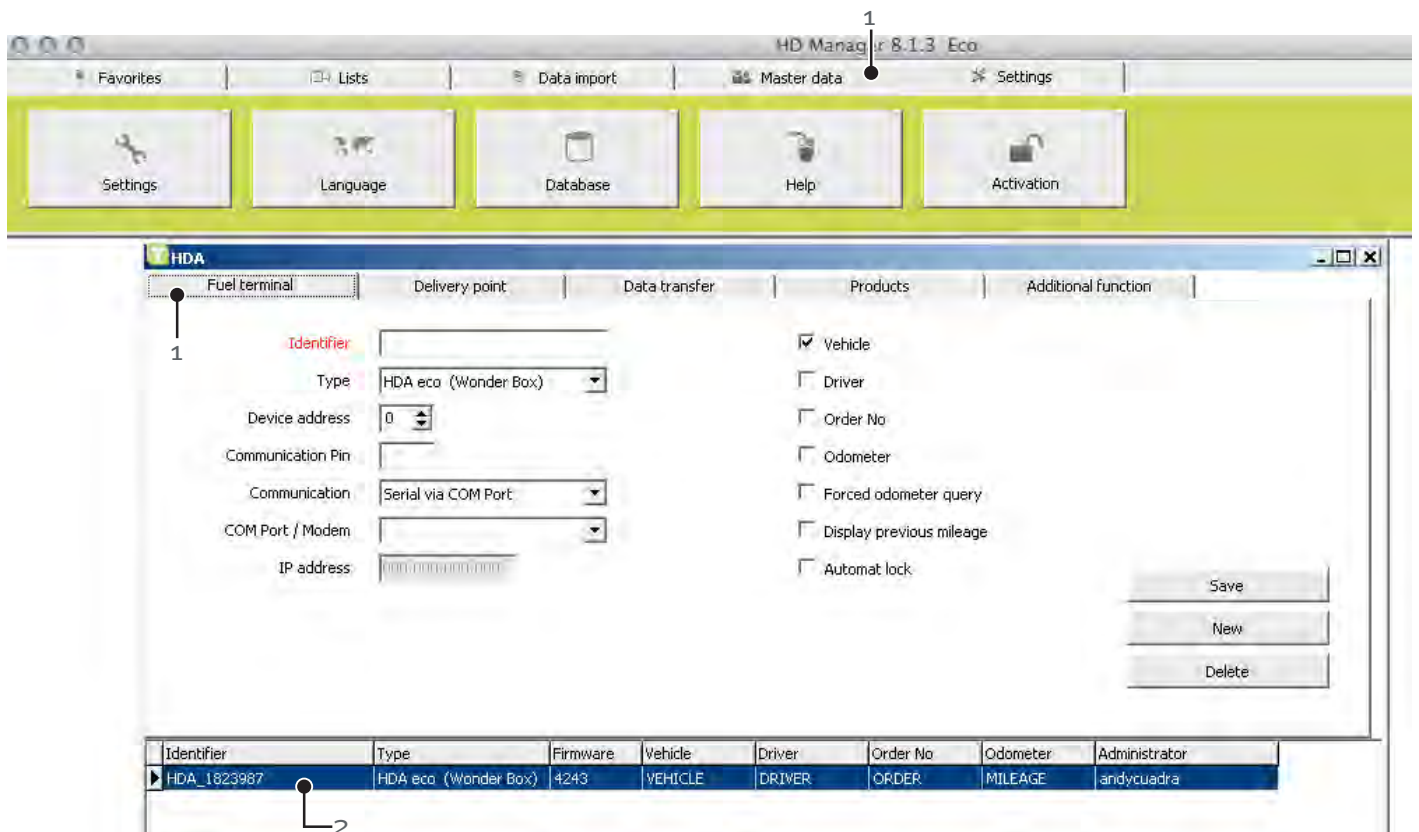
STEP 1



1. Make sure Wonderbox is powered up.
2. Now connect the ethernet cable from the Wonderbox port to your office router.

Note : Do not connect ethernet cable directly to a P.C.

STEP 2



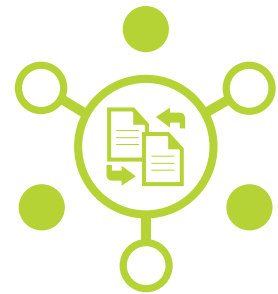
1. Open up HD Manager 8 Software, click on Master data, and now fuel terminal.
2. The Wonderbox will populate this field automatically after a couple of minutes. Once populated, you are connected to the system.

Once connected to your network, proceed to page #11 to set up your new Wonderbox, drivers, and vehicles.



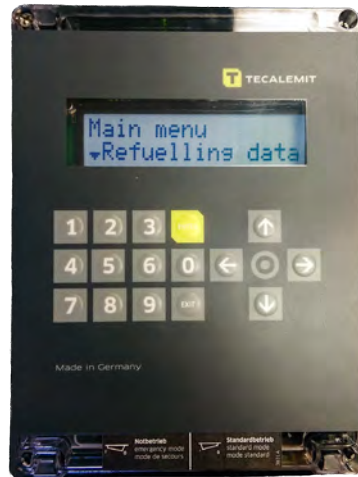
GO WITH THE FLOW.

USB SET UP



Note : You are ready to set up your USB connection to your Wonderbox. Proceed to the next page to set up global parameters.

USB SET UP

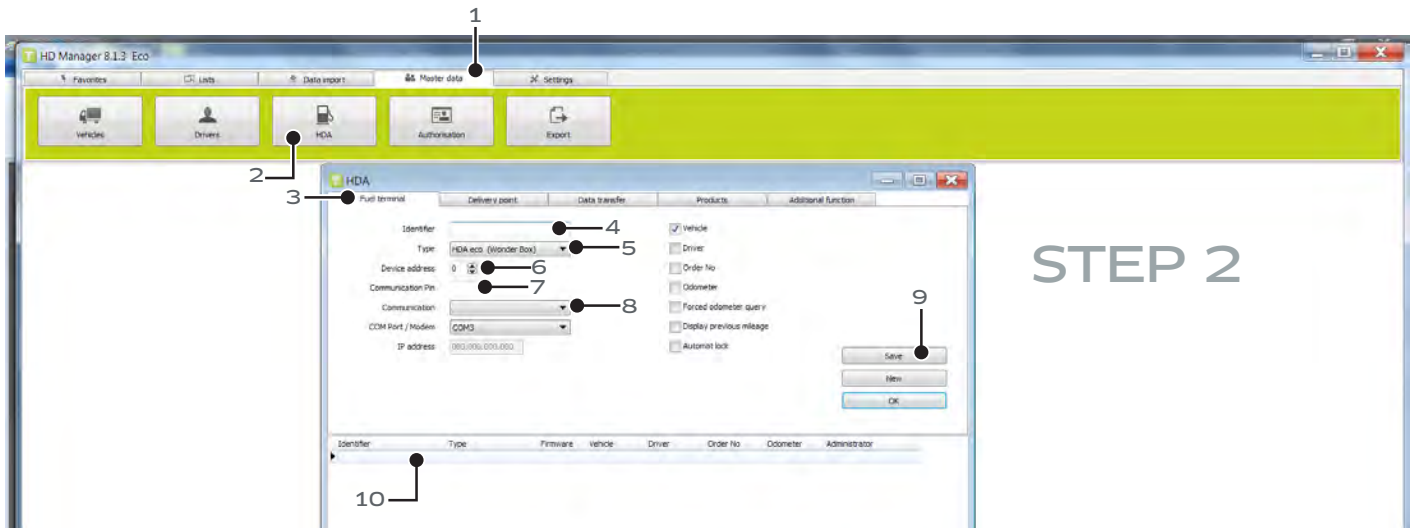


STEP 1

1. Here we are going to set the global preferences for what is required at the Wonderbox. (USB set up).
2. At the Wonderbox, you are going to set up the following parameters: Vehicle, Driver, and Odometer. Let's get started.
3. Enter your 5 digit master code / navigate to system / navigate to refueling options / navigate to identification. You can toggle left to right to choose Driver only, Vehicle only, or both. Choose your preferred setting by hitting Enter on your selection.
4. Scroll down to mileage. Here you are going to select if the Wonderbox will require an odometer input with the following selections: inquiry, always inquire, or do not inquire. Select appropriate setting by entering your selection.
5. Scroll down to 'previous mileage'. Here you are going to select if the Wonderbox will require a previous mileage with the following selections: yes or no. Select appropriate setting by entering your selection.
6. Scroll down to Nozzle switch. If you are not using a nozzle witch make sure this feature if turned off.
7. Scroll down to 'Refueling limit '. Here you are going to select the max refueling gallons allowed. Enter your desired gallon refueling limit by scrolling left and entering your selection.
8. Scroll down to 'Max refuel time'. Here you are going to select the max refueling time per transaction. Factory setting is at 2 minutes, enter your desired maximum refueling time refueling limit by scrolling left and entering your selection.
9. Scroll down to 'Time out refuel'. Here you are going to select the time out refuel option during dispensing w/o any medium being dispensed. Factory setting is at 2 minutes, enter your desired time out option by scrolling left and entering your selection.
10. Press the exit key until you return to the home screen for Driver info input.

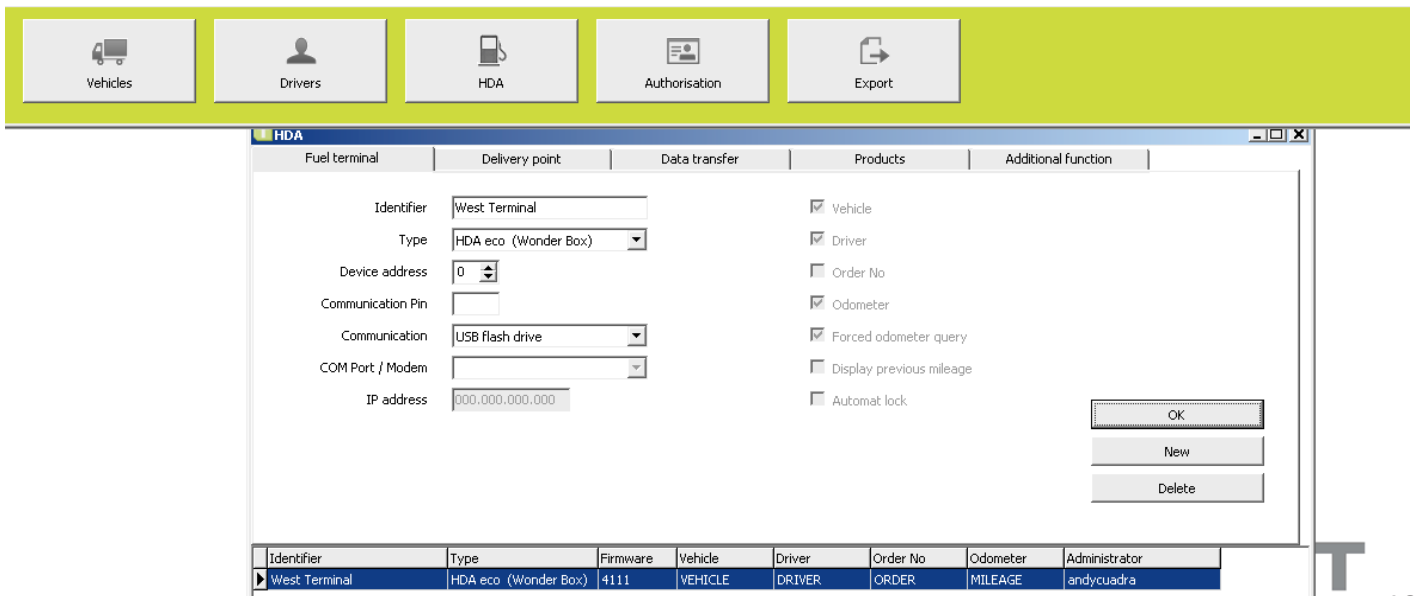
Congratulations, you have set up your global parameters, continue to the next page to set up your new Wonderbox, drivers, & vehicles.

USB SET UP



STEP 2

1. Select Master data.
2. Now select HDA icon.
3. Select fuel terminal tab.
4. Identifier: Enter the name you wish to call your Wonderbox. (ie. west terminal).
5. Type: From the pull down menu, select HDA eco Wonderbox.
6. Device address: This remains at "0" for the initial Wonderbox. If you are installing more than 1 Wonderbox, the second one will become Device Address #1.
7. Enter Master Code: 99999 as communication pin.
8. Communication: From the pull down menu select USB Flash Drive.
9. Now click save. Save box will now show 'Ok' to confirm changes.
10. The new Wonderbox parameters will be automatically populated here and info will be displayed at the bottom of the window.



Once you have set up your system, this is what it will look like.

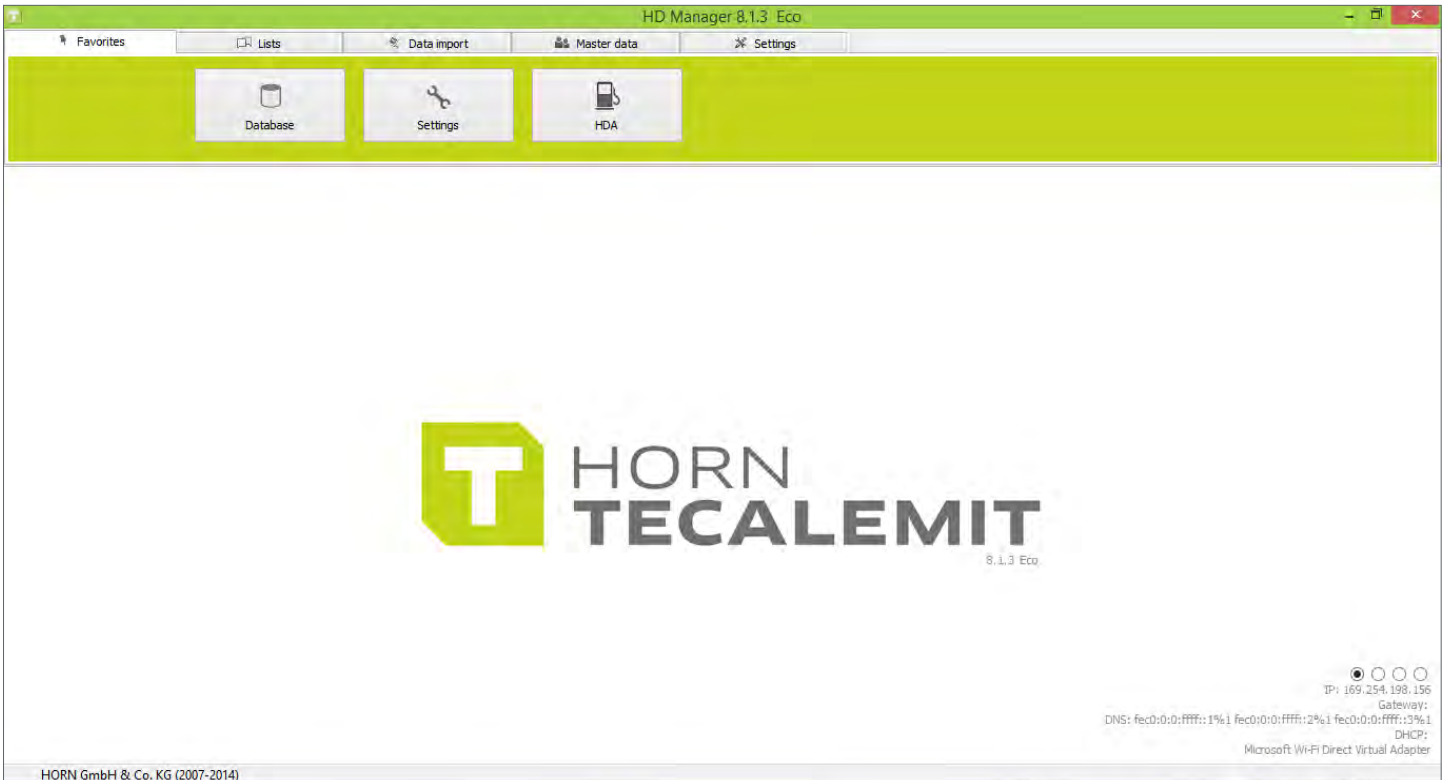
Now you are ready to begin setting up drivers and vehicles.

Proceed to the page #13.

GO WITH THE FLOW.



SOFTWARE SET UP



HD MANAGER version 8



FUEL TERMINAL

NOTE 1

Note 1 : This entry automatically populates with the correct identifier, type, firmware, vehicle, driver, etc..(Wi-Fi option only)

Identifier	Type	Firmware	Vehicle	Driver	Order No.	Odometer	Administrator
West terminal	HDA eco (Wonder Box)	4111	VEHICLE	DRIVER	ORDER	MILEAGE	andycusadra

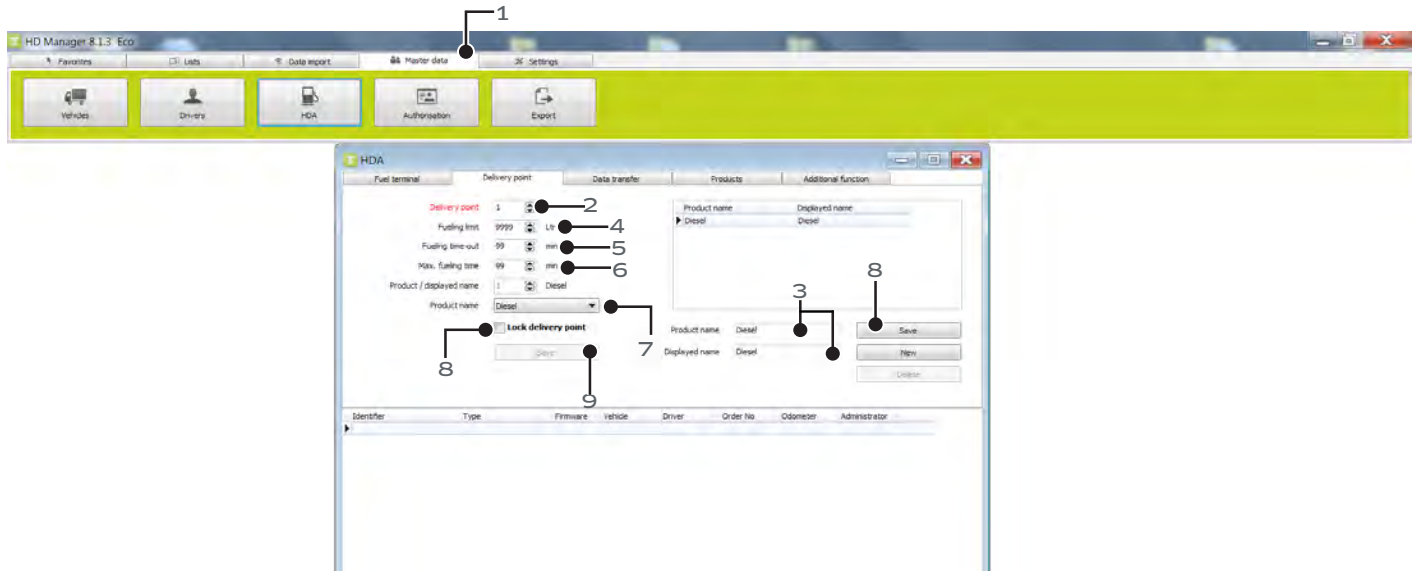
Wi-Fi / LAN Fuel Terminal set up- Follow these next steps after you have set up your Wi-Fi/LAN connection.

1. Click Master data tab, then click HDA icon, then select fuel terminal.
2. Identifier: Enter the name you wish to call your Wonderbox unit (ie. West terminal).
3. From the type pull down menu, select HDA Wonderbox.
4. Select appropriate options needed at the Wonderbox.
5. Communication pin can be left blank.
6. Communication: Select LAN.
7. Device address: From the factory it is set at “zero”. If you are setting up 1x Wonderbox, leave it at “zero”. If you are setting up more than 1x Wonderbox, the second unit will need to be set at “1”.
8. Com Port/Modem: This will automatically populate or stay blank.
9. IP address will automatically populate.
10. Click save.

USB Fuel Terminal set up- These steps have been performed in pages 8-10. You can skip to the next page.



DELIVERY POINT



Wi-Fi / LAN Delivery Point set up-

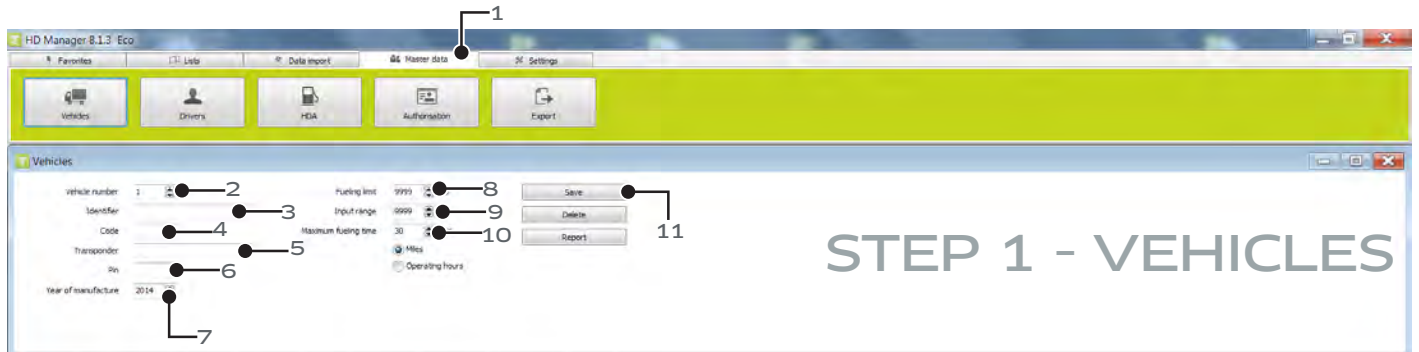
1. Select Master data tab, then HDA icon, then delivery point tab.
2. Delivery point "1" is automatically selected.
3. Enter new product name that the Wonderbox will manage. Enter product name first, then enter displayed name. Click save. Save box will now show 'Ok' to confirm changes. To change product name, simply highlight existing product, retype a different name in both fields and save.
4. Here you can limit total gallon output on the Wonderbox per transaction.
5. Here you can limit time allocated between entering code and picking up nozzle to dispense.
6. Here you can limit max fueling time during each transaction.
7. Select appropriate product name from pull down menu.
8. Hit save and exit.

USB Delivery Point set up-

1. Select Master data tab, then HDA icon, then delivery point tab.
2. Delivery point "1" is automatically selected.
3. Enter new product name that the Wonderbox will manage. Enter product name first, then enter displayed name. Click save. Save box will now show 'Ok' to confirm changes. To change product name, simply highlight existing product, retype a different name in both fields and save.
4. You can now go to set up your drivers and vehicles on the following page.



VEHICLES & DRIVERS



STEP 1 - VEHICLES

Wi-Fi / LAN Vehicles set up-

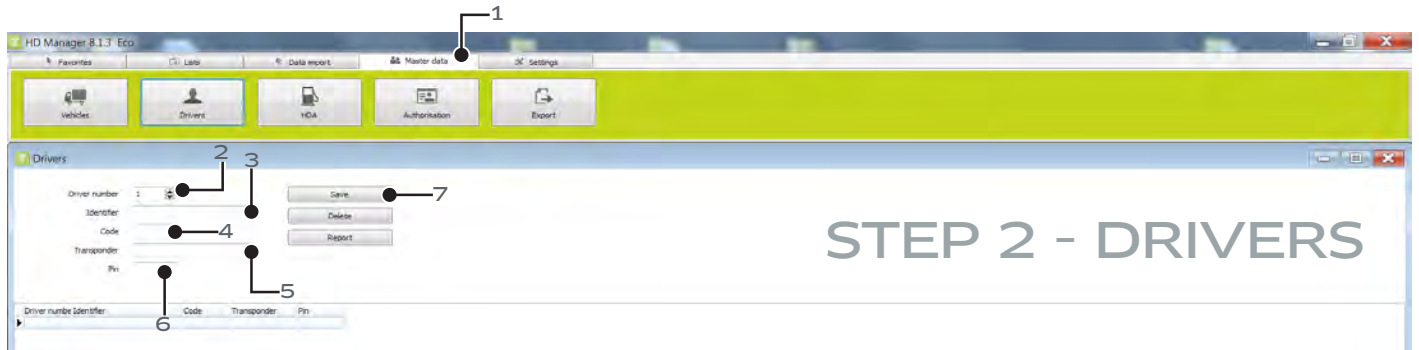
1. Under Master data, select vehicles icon to start adding your vehicles.
2. Vehicle number is already populated as vehicle number.
3. Here you will name your vehicle. Type in your description.
4. Code is the number associated with the vehicle and assigned by admin. Transponder keys are optional.
5. Optional. Applicable only if you need to setup the transponder key.
See pages 22-23
6. Optional security. You can force an additional pin # for this vehicle.
7. Year of manufacture, enter value here.
8. Optional entry. Here you can assign max limit in gallons per transaction per this vehicle.
9. Here you can force the vehicle to travel a certain mileage range before refueling. To activate, go back to options and check "force mileage inquiry".
10. Here you can force a maximum fueling time once he/she starts refueling.
11. Click "Save" once completed.

USB Vehicle set up-

1. Under Master data, select vehicles icon to start adding your vehicles.
2. Vehicle number is already populated as vehicle number.
3. Here you will name your vehicle. Type in your description.
4. Code is the number associated with the vehicle and assigned by admin. Transponder keys are optional.
5. Optional. Applicable only if you need to setup the transponder key.
See pages 22-23
6. Optional security. You can force an additional pin # for this vehicle.
7. Year of manufacture, enter value here.
8. Click 'save' once completed. Truck info should populate at the bottom of the window.



VEHICLES & DRIVERS



STEP 2 - DRIVERS

Wi-Fi / LAN / USB driver set up-

1. Select Master data tab, then “Drivers” icon.
2. Driver number is already populated as driver #1.
3. Input driver name.
4. Here you get to assign a code (up to 6 digits) that your driver will use to access the system.
Suggestion: Using the last 4 digits in the driver’s SS# may ensure pin is not shared or forgotten.
5. Optional. Applicable only if you need to setup the transponder key.
See pages 22-23
6. Optional. Additional security added to driver by forcing pin.
7. Once steps completed above, hit save. Info will populate at the bottom of the window.



KEY FOB INSTRUCTIONS



Wave the transponder key / fob key in front of the Wonderbox.



Key Fob Setup At The Box -

****Note**** It is recommended that you have some system of labelling or a way to sort the key fobs in place before you begin this process as there are no labels or distinguishing marks of any kind on the key fobs.

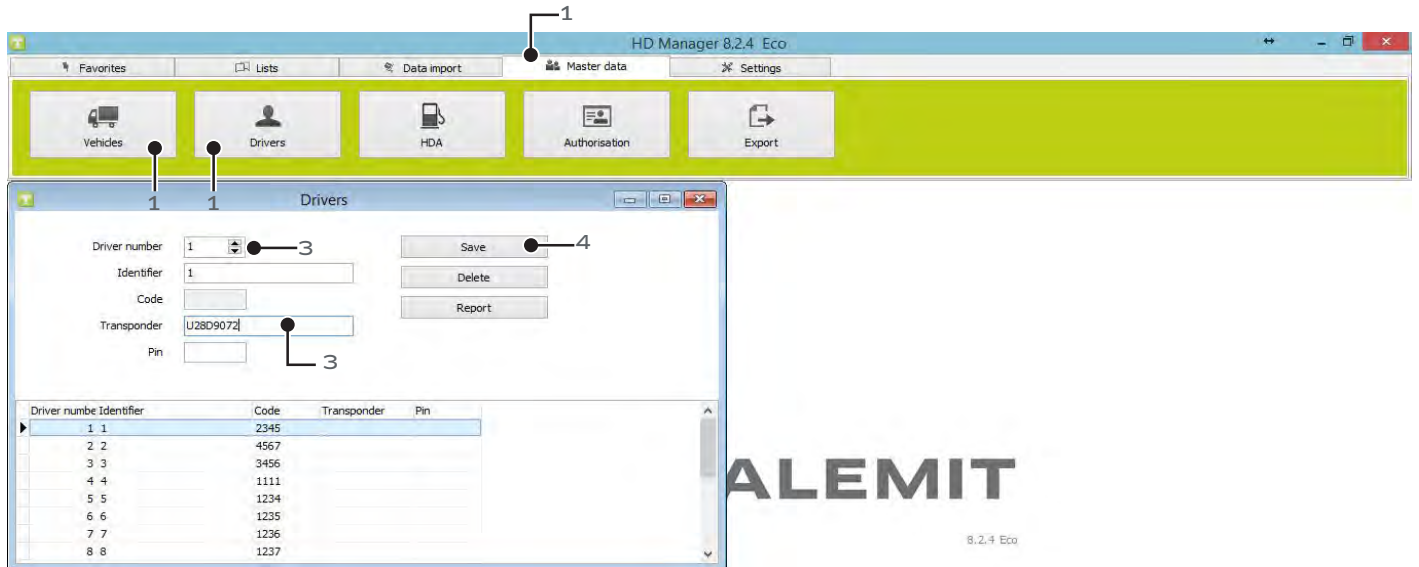
1. Walk up to the unit and with the cursor blinking at the 'Driver' prompt, type the Master Code and hit enter. Your new screen should indicate "Main menu" on the top line.
2. In the Main menu, press the down arrow key and scroll to "Ident codes". Press Enter.
3. Select/open the "driver" sub-menu by pressing Enter again.
 - a. If the Driver being assigned a key fob is already in the system, scroll down to choose the Driver Number being assigned to the Transponder/Key Fob and press Enter.
 - b. If you are setting up a new driver and assigning him/her a key fob scroll through drivers until you reach an ID code that is not in use and press Enter.
4. Wave the transponder key/FOB key in front of the WonderBox. The WB will show 'TRANS' where the code would display if it had been entered.

****If you're setting up multiple drivers, scroll to the next set of drivers & repeat steps 3 & 4****
5. Once you have finished setting up all drivers with a transponder key/key fob, Exit the drivers sub menu by pressing Exit.
6. Scroll to 'Vehicles' and press Enter.

****Repeat steps 3 & 4, replacing driver info with vehicle info; including the note referring to adding multiple vehicles/drivers****
7. Once you are done entering/setting up all drivers/vehicles with a transponder key/key fob, Exit all sub-menus by pressing the Exit key and returning to the blinking cursor on the "Driver" screen.



KEY FOB SETUP – WITH RFID USB READER



Key Fob Setup With USB RFID Reader -

****Note**** It is recommended that you have some system of labelling or a way to sort the key fobs in place before you begin this process as there are no labels or distinguishing marks of any kind on the key fobs.

1. Open HD Manager 8 and select Master Data tab and then either vehicles or drivers depending on which you are setting up.
2. Plug in USB RFID Reader to a USB port on your computer.
3. Select the driver number that you wish to edit and click on the “Transponder” field.
(****Note**** it is important to make sure you have selected the transponder section or the key fob’s ID will not be written correctly and may overwrite existing data)
4. Wave the desired key fob over the USB stick and a fob ID should populate.
Press Save and either label or place the key fob in a designated area.

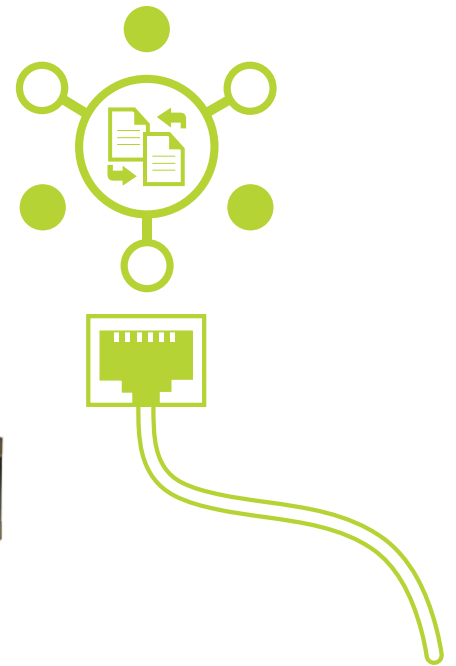
**** For multiple Key Fobs repeat steps 3-4****



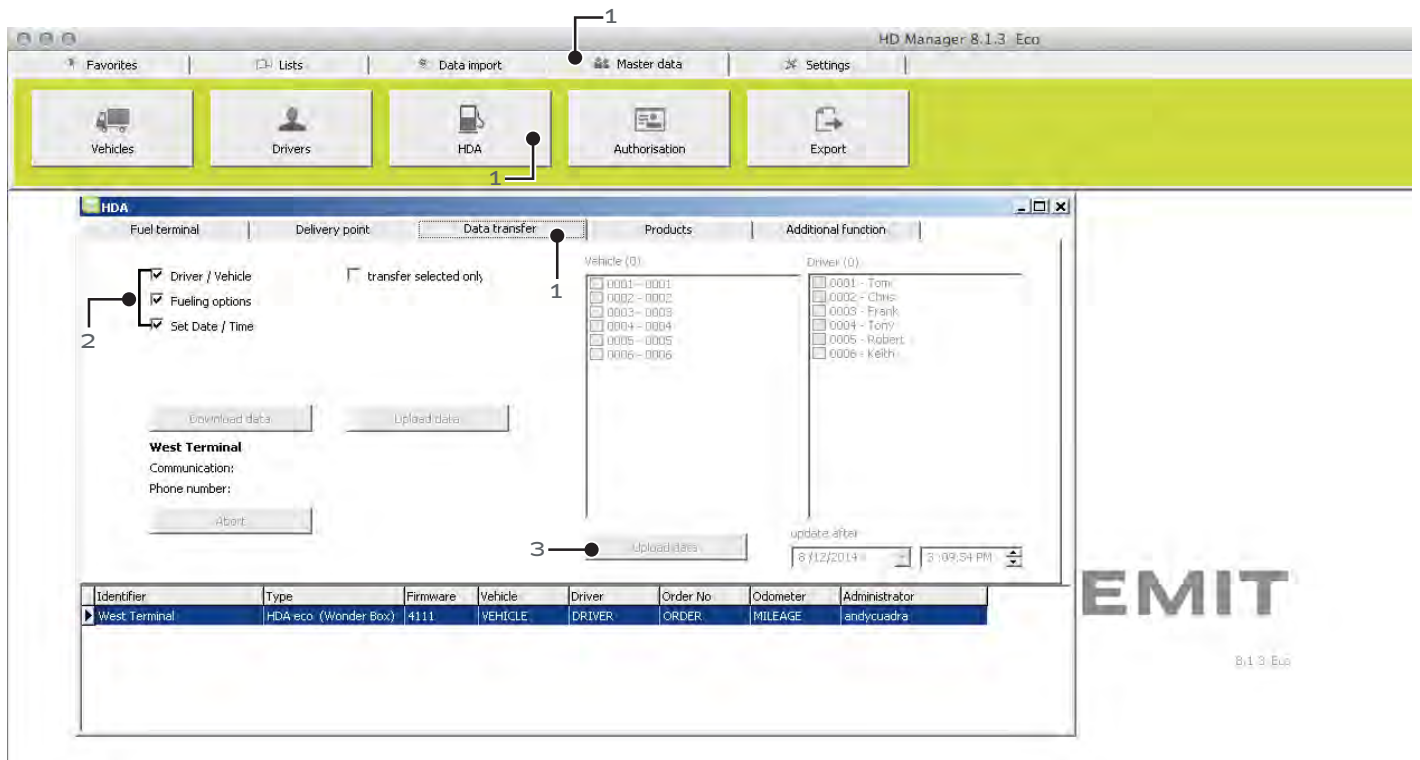
GO WITH THE FLOW.



EXPORT DATA TO WONDERBOX



EXPORT - COMPUTER → WONDERBOX VIA Wi-Fi/LAN



Wi-Fi / LAN data export

1. Select master data / select HDA / select data transfer tab.
2. Select options to be uploaded & downloaded.
3. Click upload data.

Congratulations! You have completed the set up for Wi-Fi / LAN.



EXPORT - COMPUTER → WONDERBOX VIA USB

Note : These next steps will show you how to upload the information you just entered (i.e. drivers, vehicles, etc...) to the Wonderbox.



USB data export -

1. Select Master data, then “export” icon.
2. Select fuel terminal. This is what you named your Wonderbox in the master data/fuel terminal.
3. Select the HDA eco v 4.230 or higher option.
4. Click on “export“ to begin process.
5. Save file to USB drive. DO NOT change file name from: DATAIN. Once bar is green, info has been saved.
6. Walk to box and plug in USB. Your Wonderbox will show “Storing...” and you will hear a series of beeps. When the box is done uploading the information from the USB, it will go back to the the home screen for driver info input.

Congratulations! You have completed the set up for USB.

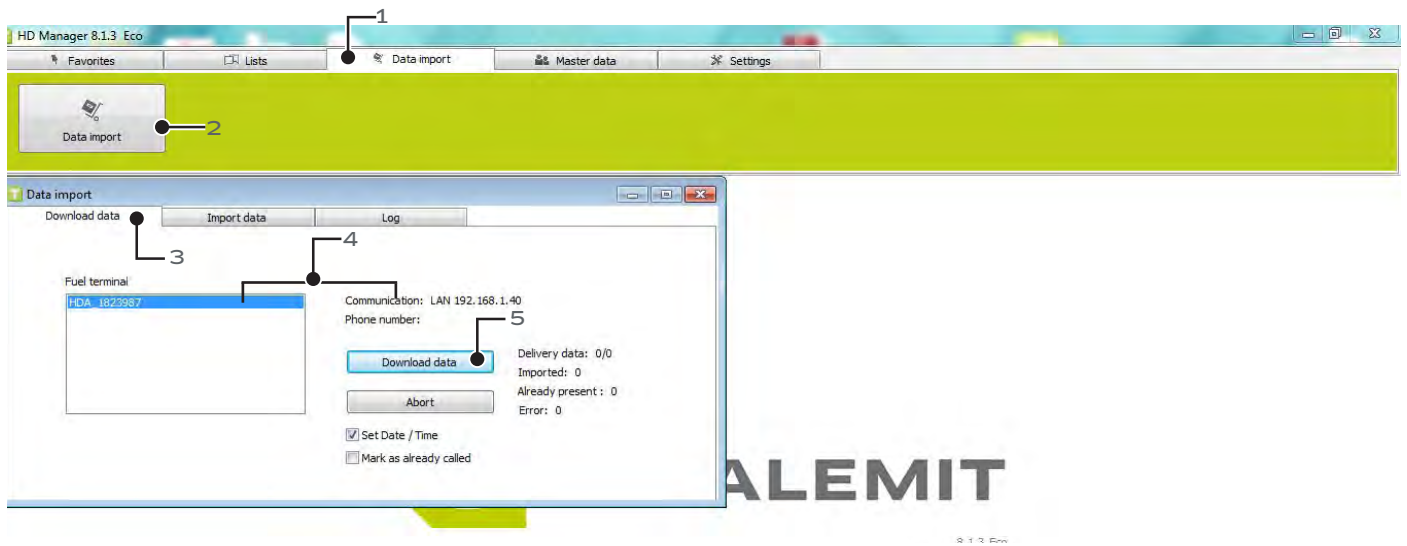


GO WITH THE FLOW.

IMPORT DATA TO COMPUTER



IMPORT - WONDERBOX → COMPUTER VIA Wi-Fi/LAN



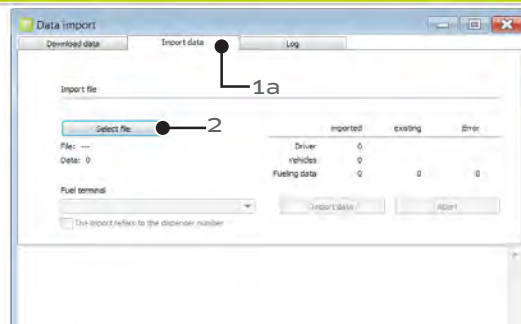
Wi-Fi / LAN import data-

1. Click on data import tab.
2. Click on data import icon.
3. Select download data tab.
4. Fuel terminal and communication will automatically populate.
Remember you have already set up Wi-Fi/LAN in previous chapter.
5. Click on download data.



IMPORT - WONDERBOX → COMPUTER VIA USB

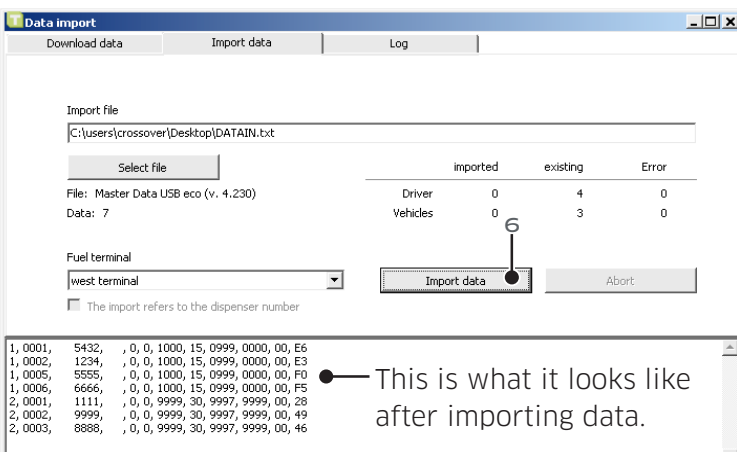
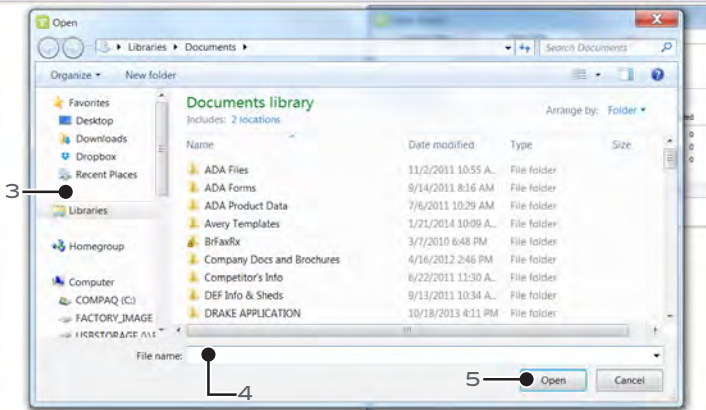
NOTE: Walk to the Wonderbox and insert the TECALEMIT USB stick. Wonderbox will automatically download file “001” for the first time and place it on USB stick. Once you have downloaded, walk back to your computer and insert USB. Follow steps below...



STEP 1

USB import data-

1. Select Data import.
- 1a. Import data.
2. Click “select file”.
3. Look for USB drive.
4. Look for file 001 in USB file.
5. Highlight file 001 and click open.
6. Click import data button.



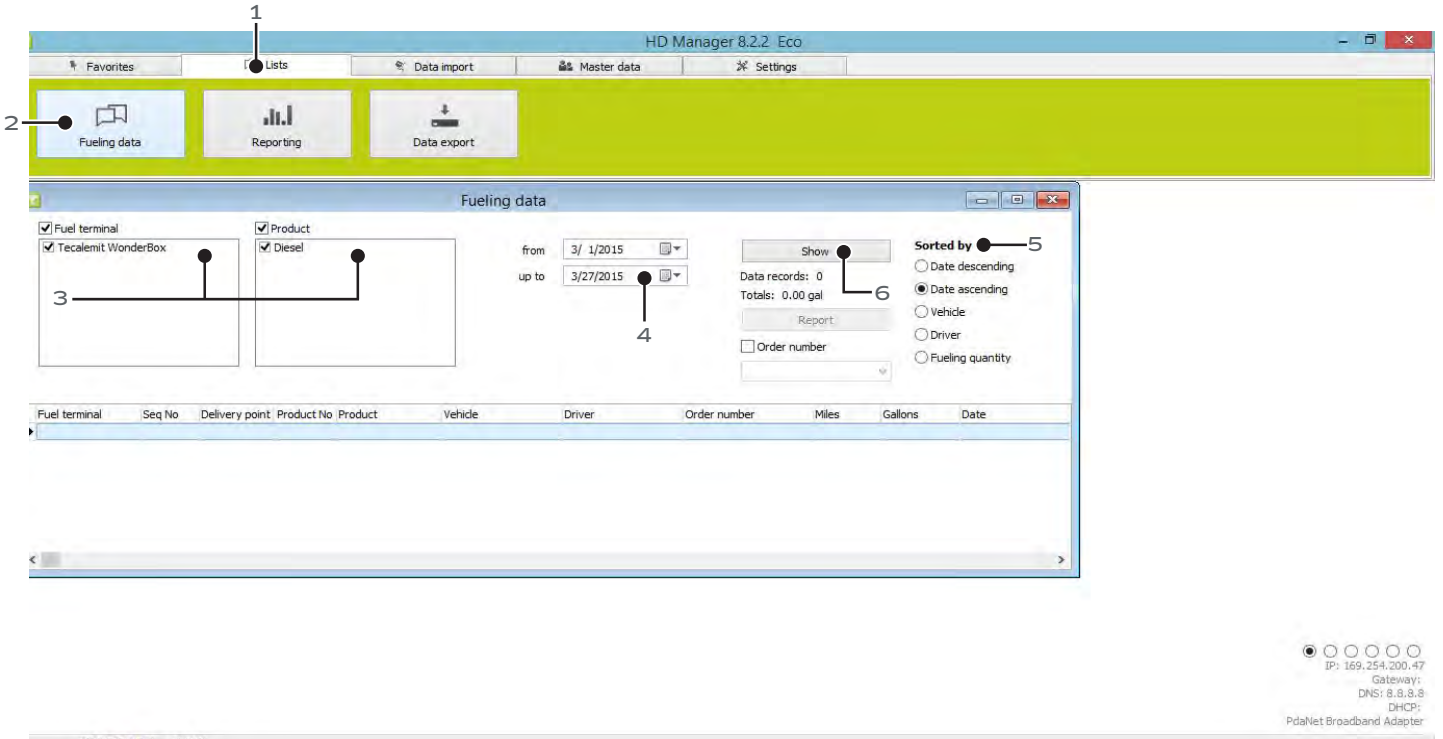
GO WITH THE FLOW.



FUEL REPORTS



VIEW FUEL REPORT



1. Go to lists tab.
2. Click on fueling data.
3. Check fuel terminal, showing the name you have assigned your Wonderbox.
Check your product(s) already assigned previously.
4. Optional date range to view fuel report.
5. Select sorting criteria as number
6. Click on 'show' then 'report' to view your transaction report. See sample on next page.

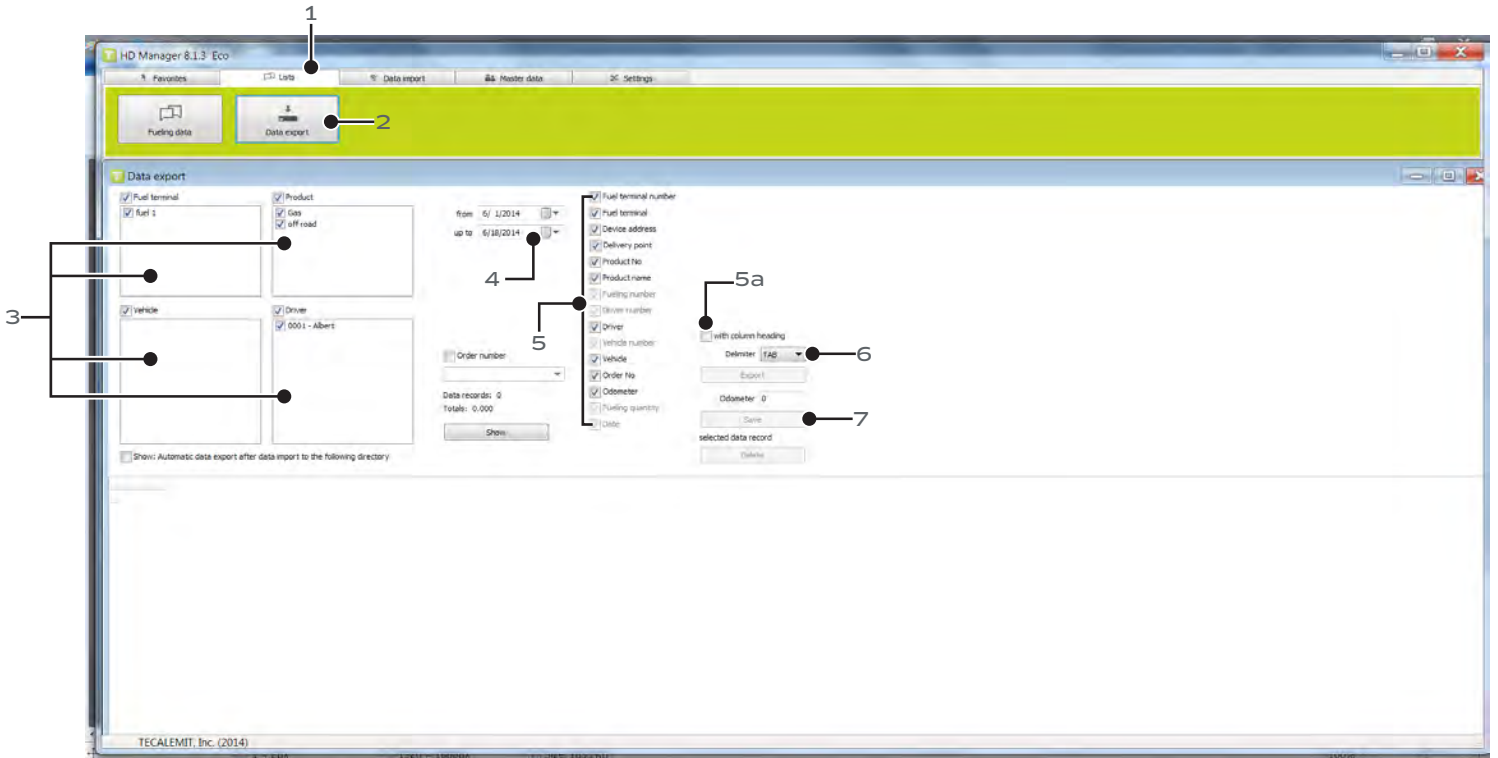


VIEW FUEL REPORT

HDM	Fuel Dispenser	Driver	Vehicles	Miles	Fueling No.	Order No.	Products	Gallons	Date	Time
ON ROAD	1	DAVID	100	1414	00059		Diesel	5.20	1/20/2014	12:30PM
ON ROAD	1	MARK	102	1256	00061		Diesel	5.80	1/20/2014	12:31PM
ON ROAD	1	TOM	101	5236	00060		Diesel	5.40	1/20/2014	12:31PM
ON ROAD	1	LARRY	104	1235	00063		Diesel	5.20	1/20/2014	12:32PM
ON ROAD	1	SAM	103	5656	00062		Diesel	5.40	1/20/2014	12:32PM



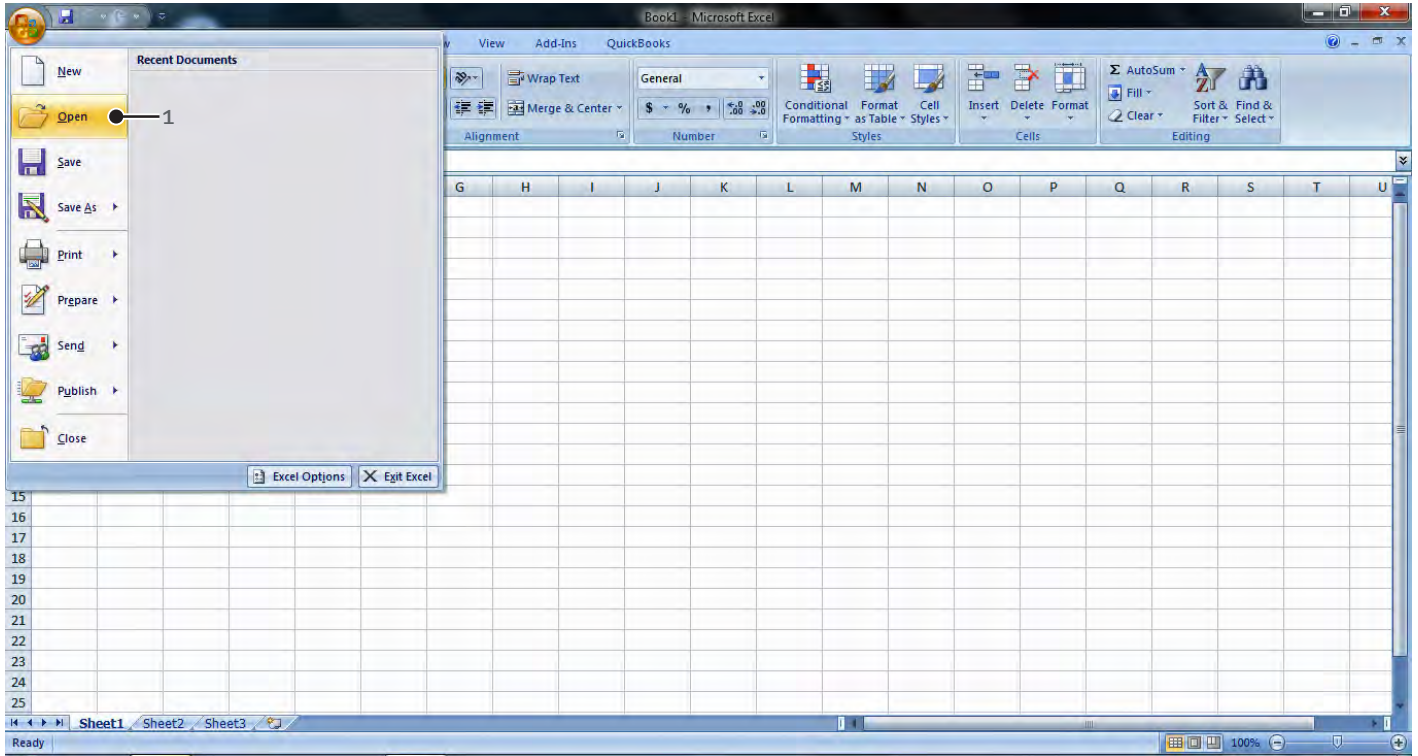
EXPORT TO EXCEL



1. Go to lists tab.
2. Click on data export icon.
3. Check appropriate boxes for fuel terminal, product(s), vehicles, and drivers you wish to see in your report.
4. Date range to export data from.
5. Check all that apply.
- 5a. Make sure the “with column heading” is checked.
6. From the pull down menu select “tab”.
7. Click ‘show’ and info will populate at the bottom of the window.
8. Export and save file to your computer as a .csv file.



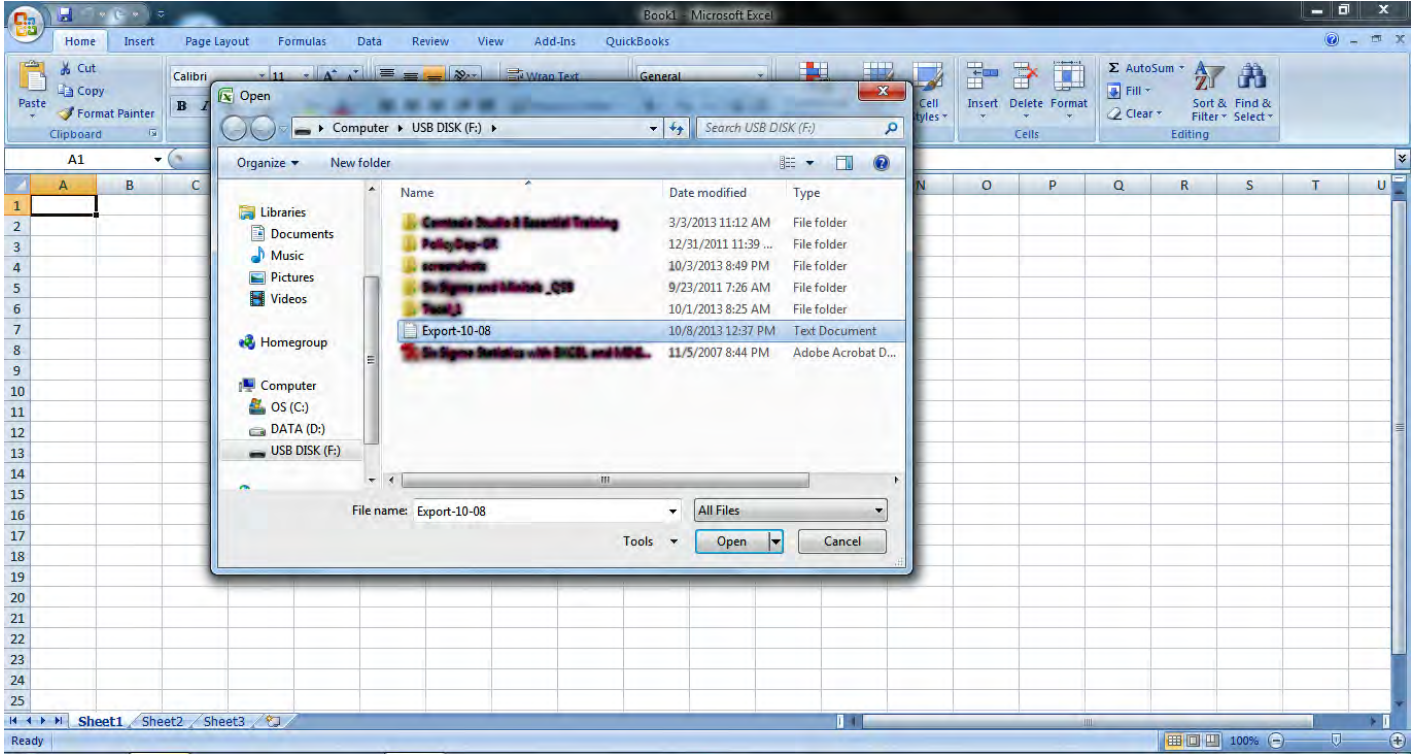
EXPORT TO EXCEL



1. Open excel and let's look for your file. Click file open....



EXPORT TO EXCEL

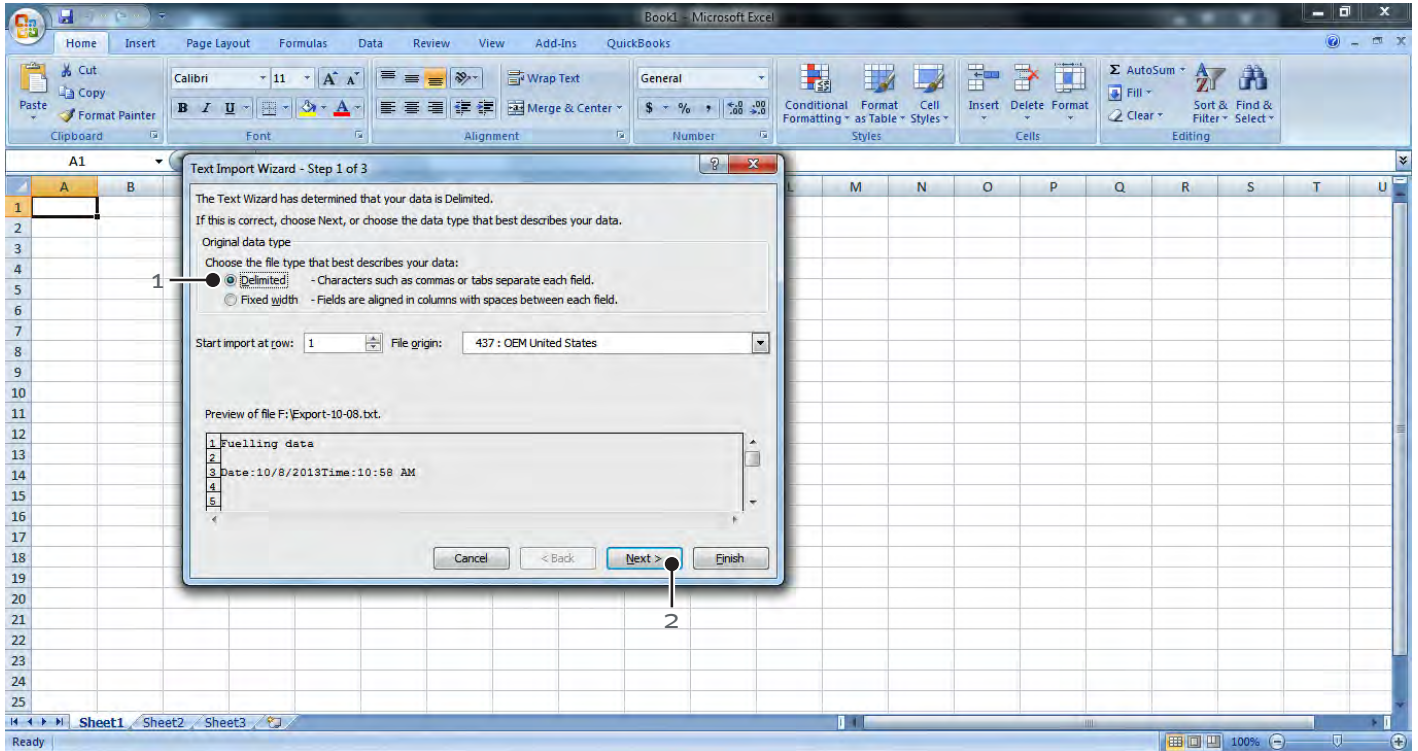


Look for the file to open.

Make sure you select all files since the file you will be looking for is not an excel file.



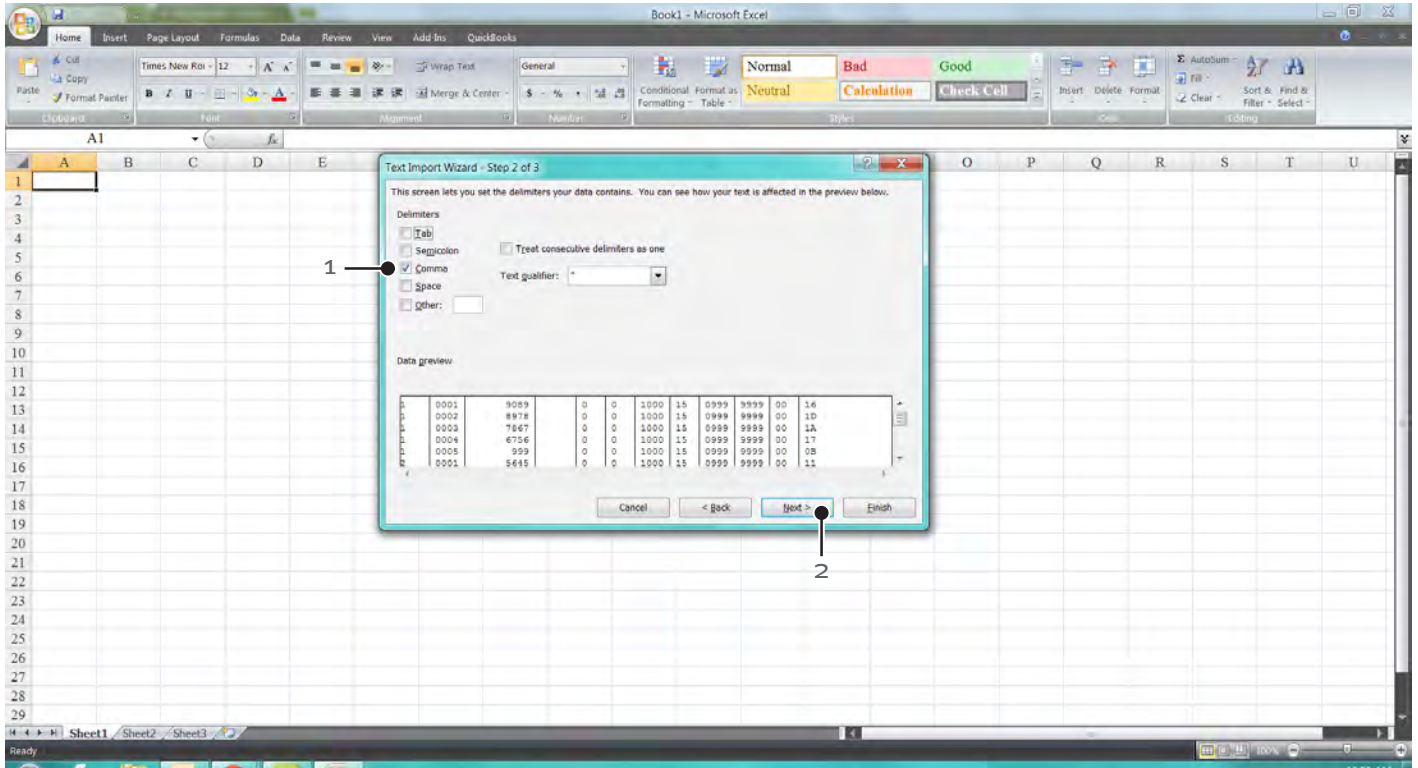
EXPORT TO EXCEL



1. Make sure that you select Delimited as shown.
2. Click next...



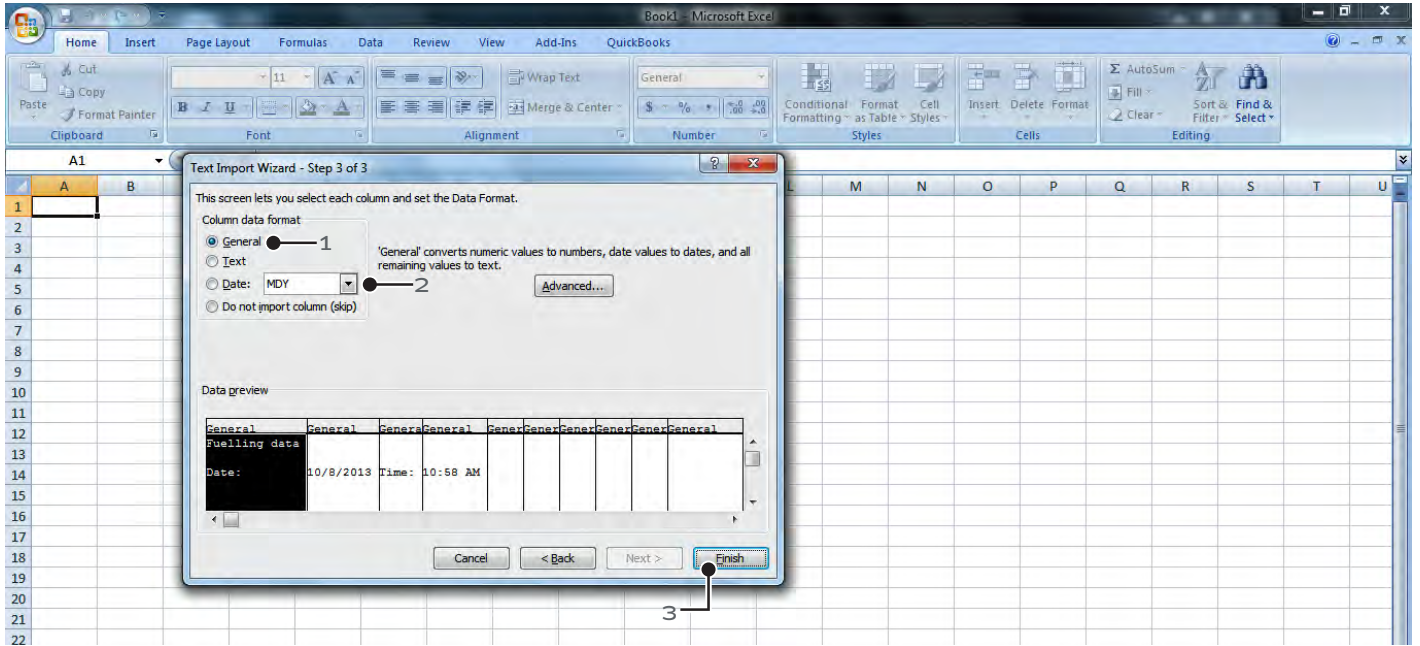
EXPORT TO EXCEL



1. Click on comma option.
2. Now click next...



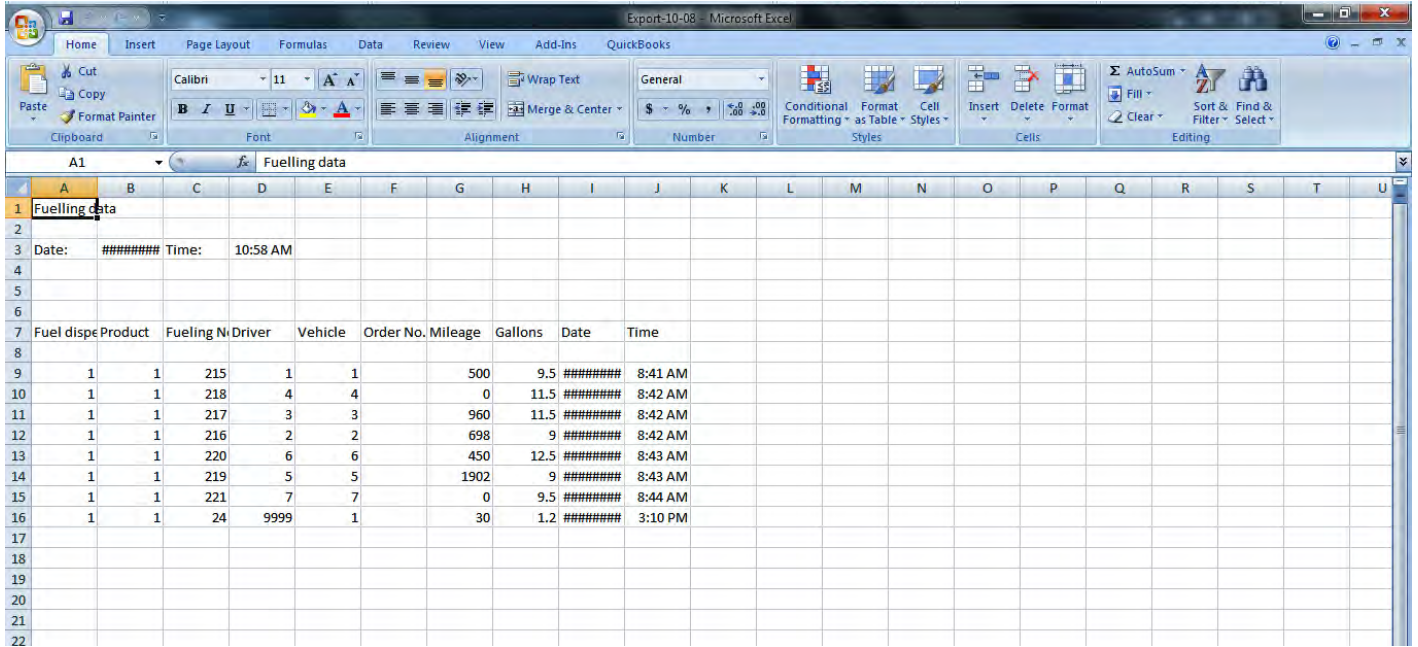
EXPORT TO EXCEL



1. Make sure you have selected General as shown.
2. You can leave the date as shown. "MDY".
3. Click finish.



EXPORT TO EXCEL



This is the screen that you should have in front of you.
 If you see the following characters on your file, simply drag the columns to make them wider to show the numbers.

