

# 3000# Stainless Fittings



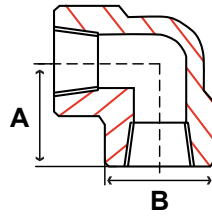
SMITH-COOPER®  
INTERNATIONAL

## 3000# Stainless Fittings

### Specifications

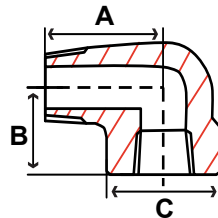
- Forged stainless steel material conforms to ASME A182
- Forged stainless steel fitting dimensions conform to ASME B16.11
- NPT threads conform to ASME B1.20.1
- Socket weld fittings conform to ASME B16.11
- Forged stainless union conform to MSS SP-83
- Forged stainless outlets conform to MSS SP-97
- Forged stainless socket weld inserts conform to MSS SP-79
- Manufacturing facility is ISO 9001:2008

**Fig. S4034E & S4036E - 90° Elbow**



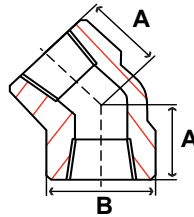
Size IN	Part Number		A IN	B IN	Packing	Weight LB
	304 / L	316 / L				
1/8	S4034E 001	S4036E 001	0.81	0.88	100	0.2
1/4	S4034E 002	S4036E 002	0.97	1.00	100	0.7
3/8	S4034E 003	S4036E 003	1.12	1.31	80	0.6
1/2	S4034E 004	S4036E 004	1.31	1.50	50	0.9
3/4	S4034E 006	S4036E 006	1.50	1.81	25	1.5
1	S4034E 010	S4036E 010	1.75	2.19	20	2.2
1-1/4	S4034E 012	S4036E 012	2.00	2.44	15	3.1
1-1/2	S4034E 014	S4036E 014	2.38	2.97	6	4.8
2	S4034E 020	S4036E 020	2.50	3.31	5	5.4
2-1/2	S4034E 024	S4036E 024	3.25	4.00	2	13.2
3	S4034E 030	S4036E 030	3.75	4.75	1	19.5

**Fig. S4034SE & S4036SE - 90° Street Elbow**



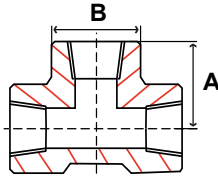
Size IN	Part Number		A IN	B IN	C IN	Packing	Weight LB
	304 / L	316 / L					
1/8	S4034SE001	S4036SE001	0.97	1.00	1.25	200	0.2
1/4	S4034SE002	S4036SE002	0.97	1.00	1.25	150	0.2
3/8	S4034SE003	S4036SE003	1.12	1.31	1.50	80	0.4
1/2	S4034SE004	S4036SE004	1.31	1.50	1.69	50	0.6
3/4	S4034SE006	S4036SE006	1.50	1.81	1.94	30	1.1
1	S4034SE010	S4036SE010	1.75	2.19	2.31	20	2.2
1-1/4	S4034SE012	S4036SE012	2.00	2.44	2.69	15	2.4
1-1/2	S4034SE014	S4036SE014	2.38	2.97	2.81	8	4.4
2	S4034SE020	S4036SE020	2.50	3.31	3.38	5	6.4

**Fig. S4034F & S4036F - 45° Elbow**



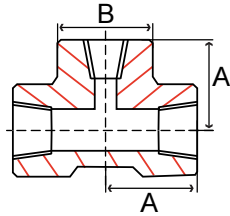
Size IN	Part Number		A IN	B IN	Packing	Weight LB
	304 / L	316 / L				
1/8	S4034F 001	S4036F 001	0.66	0.86	100	0.2
1/4	S4034F 002	S4036F 002	0.75	1.00	100	0.2
3/8	S4034F 003	S4036F 003	0.88	1.31	80	0.5
1/2	S4034F 004	S4036F 004	1.00	1.50	50	0.7
3/4	S4034F 006	S4036F 006	1.12	1.81	30	1.2
1	S4034F 010	S4036F 010	1.31	2.19	20	2.0
1-1/4	S4034F 012	S4036F 012	1.38	2.44	15	2.2
1-1/2	S4034F 014	S4036F 014	1.69	2.97	8	4.5
2	S4034F 020	S4036F 020	1.72	3.31	6	4.9
2-1/2	S4034F 024	S4036F 024	2.06	4.00	2	8.1
3	S4034F 030	S4036F 030	2.50	4.75	2	13.1

**Fig. S4034T & S4036T - Tee**



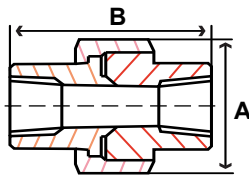
Size IN	Part Number		A IN	B IN	Packing	Weight LB
	304 / L	316 / L				
1/8	S4034T 001	S4036T 001	0.81	0.88	80	0.2
1/4	S4034T 002	S4036T 002	0.97	1.00	80	0.4
3/8	S4034T 003	S4036T 003	1.12	1.31	50	0.8
1/2	S4034T 004	S4036T 004	1.31	1.50	35	1.2
3/4	S4034T 006	S4036T 006	1.50	1.81	20	2.0
1	S4034T 010	S4036T 010	1.75	2.19	15	3.2
1-1/4	S4034T 012	S4036T 012	2.00	2.44	10	3.8
1-1/2	S4034T 014	S4036T 014	2.38	2.97	5	7.2
2	S4034T 020	S4036T 020	2.50	3.31	4	7.7
2-1/2	S4034T 024	S4036T 024	3.25	4.00	2	15.4
3	S4034T 030	S4036T 030	3.75	4.75	1	22.4

FORGED



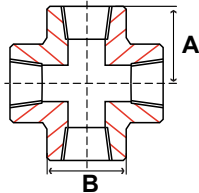
**Fig. S4034RT & S4036RT – Reducing Tee**

Size IN	Part Number		A IN	B IN	Packing	Weight LB
	304 / L	316 / L				
1/2 X 1/4	S4034RT004002	S4036RT004002	1.30	1.49	20	1.8
3/4 X 1/4	S4034RT006002	S4036RT006002	1.50	1.81	15	2.9
3/4 X 3/8	S4034RT006003	S4036RT006003	1.50	1.81	15	2.9
3/4 X 1/2	S4034RT006004	S4036RT006004	1.50	1.81	10	3.6
1 X 3/8	S4034RT010003	S4036RT010003	1.75	2.19	10	3.6
1 X 1/2	S4034RT010004	S4036RT010004	1.75	2.19	10	3.6
1 X 3/4	S4034RT010006	S4036RT010006	1.75	2.19	5	6.8
1-1/2 X 1/2	S4034RT014004	S4036RT014004	2.38	2.97	5	6.8
1-1/2 X 3/4	S4034RT014006	S4036RT014006	2.38	2.97	5	6.8
1-1/2 X 1	S4034RT014010	S4036RT014010	2.38	2.97	5	6.8
1-1/2 X 1-1/4	S4034RT014012	S4036RT014012	2.38	2.97	4	7.0
2 X 3/8	S4034RT020003	S4036RT020003	2.50	3.31	4	7.0
2 X 1/2	S4034RT020004	S4036RT020004	2.50	3.31	4	7.0
2 X 3/4	S4034RT020006	S4036RT020006	2.50	3.31	4	7.0
2 X 1	S4034RT020010	S4036RT020010	2.50	3.31	4	7.0
2 X 1-1/4	S4034RT020012	S4036RT020012	2.50	3.31	4	7.0
2 X 1-1/2	S4034RT020014	S4036RT020014	2.50	3.31	4	7.0



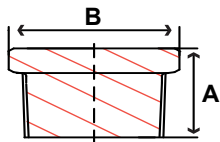
**Fig. S4034U & S4036U - Union**

Size IN	Part Number		A IN	B IN	Packing	Weight LB
	304 / L	316 / L				
1/8	S4034U 001	S4036U 001	1.48	1.66	70	0.6
1/4	S4034U 002	S4036U 002	1.48	1.66	70	0.6
3/8	S4034U 003	S4036U 003	1.66	1.83	70	0.5
1/2	S4034U 004	S4036U 004	1.93	2.00	50	0.7
3/4	S4034U 006	S4036U 006	2.38	2.31	35	1.0
1	S4034U 010	S4036U 010	2.78	2.42	20	1.7
1-1/4	S4034U 012	S4036U 012	3.35	2.86	14	2.2
1-1/2	S4034U 014	S4036U 014	3.70	3.00	10	3.5
2	S4034U 020	S4036U 020	4.42	3.50	5	5.3
2-1/2	S4034U 024	S4036U 024	5.22	4.25	3	8.0
3	S4034U 030	S4036U 030	6.15	4.42	2	11.6



**Fig. S4034X & S4036X - Cross**

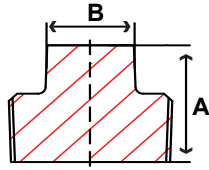
Size IN	Part Number		A IN	B IN	Packing	Weight LB
	304 / L	316 / L				
1/8	S4034X 001	S4036X 001	0.81	0.88	40	0.4
1/4	S4034X 002	S4036X 002	0.97	1.00	40	0.5
3/8	S4034X 003	S4036X 003	1.12	1.31	40	0.9
1/2	S4034X 004	S4036X 004	1.31	1.50	30	1.4
3/4	S4034X 006	S4036X 006	1.50	1.81	20	2.5
1	S4034X 010	S4036X 010	1.75	2.19	12	3.5
1-1/4	S4034X 012	S4036X 012	2.00	2.44	6	4.1
1-1/2	S4034X 014	S4036X 014	2.38	2.97	4	6.5
2	S4034X 020	S4036X 020	2.50	3.31	4	8.1



**Fig. S4034HP & S4036HP - Hex Head Plug**

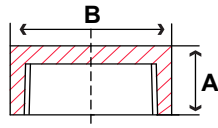
Size IN	Part Number		A IN	B IN	Packing	Weight LB
	304 / L	316 / L				
1/8	S4034HP001	S4036HP001	0.63	0.44	800	0.02
1/4	S4034HP002	S4036HP002	0.69	0.62	800	0.06
3/8	S4034HP003	S4036HP003	0.81	0.69	600	0.08
1/2	S4034HP004	S4036HP004	0.87	0.88	250	0.1
3/4	S4034HP006	S4036HP006	1.00	1.06	150	0.3
1	S4034HP010	S4036HP010	1.13	1.38	100	0.4
1-1/4	S4034HP012	S4036HP012	1.37	1.75	35	0.9
1-1/2	S4034HP014	S4036HP014	1.43	2.00	25	1.3
2	S4034HP020	S4036HP020	1.57	2.50	20	2.2
2-1/2	S4034HP024	S4036HP024	1.81	3.00	8	3.9
3	S4034HP030	S4036HP030	1.93	3.50	6	5.7

FORGED



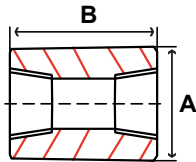
**Fig. S4034SP & S4036SP - Square Head Plug**

Size IN	Part Number		A IN	B IN	Packing	Weight LB
	304 / L	316 / L				
1/8	S4034SP001	S4036SP001	0.63	0.28	800	0.02
1/4	S4034SP002	S4036SP002	0.69	0.38	800	0.02
3/8	S4034SP003	S4036SP003	0.81	0.44	500	0.06
1/2	S4034SP004	S4036SP004	0.94	0.56	300	0.1
3/4	S4034SP006	S4036SP006	1.06	0.62	200	0.1
1	S4034SP010	S4036SP010	1.25	0.81	150	0.3
1-1/4	S4034SP012	S4036SP012	1.37	0.94	80	0.5
1-1/2	S4034SP014	S4036SP014	1.43	1.12	50	0.8
2	S4034SP020	S4036SP020	1.57	1.31	30	1.3



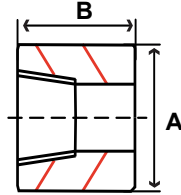
**Fig. S4034C & S4036C - Cap**

Size IN	Part Number		A IN	B IN	Packing	Weight LB
	304 / L	316 / L				
1/8	S4034C 001	S4036C 001	0.75	0.62	300	0.04
1/4	S4034C 002	S4036C 002	1.00	0.75	300	0.08
3/8	S4034C 003	S4036C 003	1.00	0.88	250	0.1
1/2	S4034C 004	S4036C 004	1.25	1.12	130	0.2
3/4	S4034C 006	S4036C 006	1.44	1.33	80	0.3
1	S4034C 010	S4036C 010	1.62	1.75	50	0.8
1-1/4	S4034C 012	S4036C 012	1.75	2.25	30	1.3
1-1/2	S4034C 014	S4036C 014	1.75	2.50	25	1.5
2	S4034C 020	S4036C 020	1.88	3.00	15	2.4
2-1/2	S4034C 024	S4036C 024	2.38	3.62	10	4.8
3	S4034C 030	S4036C 030	2.56	4.25	5	7.7



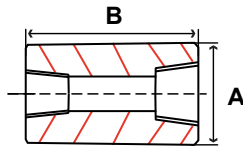
**Fig. S4034CP & S4036CP - Full Coupling**

Size IN	Part Number		A IN	B IN	Packing	Weight LB
	304 / L	316 / L				
1/8	S4034CP001	S4036CP001	0.62	1.25	250	0.04
1/4	S4034CP002	S4036CP002	0.75	1.38	250	0.08
3/8	S4034CP003	S4036CP003	0.88	1.50	200	0.1
1/2	S4034CP004	S4036CP004	1.12	1.88	100	0.2
3/4	S4034CP006	S4036CP006	1.33	2.00	70	0.3
1	S4034CP010	S4036CP010	1.75	2.38	35	0.8
1-1/4	S4034CP012	S4036CP012	2.25	2.62	20	1.3
1-1/2	S4034CP014	S4036CP014	2.50	3.12	15	1.5
2	S4034CP020	S4036CP020	3.00	3.38	10	2.4
2-1/2	S4034CP024	S4036CP024	3.62	3.62	5	4.8
3	S4034CP030	S4036CP030	4.25	4.25	3	7.7
4	S4034CP040	S4036CP040	5.50	4.75	2	10.6



**Fig. S4034HC & S4036HC - Half Coupling**

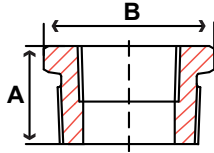
Size IN	Part Number		A IN	B IN	Packing	Weight LB
	304 / L	316 / L				
1/8	S4034HC001	S4036HC001	0.62	0.62	400	0.04
1/4	S4034HC002	S4036HC002	0.75	0.69	800	0.04
3/8	S4034HC003	S4036HC003	0.88	0.75	500	0.06
1/2	S4034HC004	S4036HC004	1.12	0.94	250	0.1
3/4	S4034HC006	S4036HC006	1.33	1.00	150	0.2
1	S4034HC010	S4036HC010	1.75	1.17	80	0.5
1-1/4	S4034HC012	S4036HC012	2.25	1.31	35	0.7
1-1/2	S4034HC014	S4036HC014	2.50	1.56	30	1.1
2	S4034HC020	S4036HC020	3.00	1.67	20	1.5
2-1/2	S4034HC024	S4036HC024	3.62	1.81	12	2.4
3	S4034HC030	S4036HC030	4.25	2.12	6	3.7



**Fig. S4034RC & S4036RC - Reducing Coupling**

Size IN	Part Number		A IN	B IN	Packing	Weight LB
	304 / L	316 / L				
1/4 x 1/8	S4034RC002001	S4036RC002001	0.75	1.38	250	0.1
3/8 x 1/8	S4034RC003001	S4036RC003001	0.88	1.50	200	0.1
3/8 x 1/4	S4034RC003002	S4036RC003002	0.88	1.50	200	0.1
1/2 x 1/8	S4034RC004001	S4036RC004001	1.12	1.88	100	0.2
1/2 x 1/4	S4034RC004002	S4036RC004002	1.12	1.88	100	0.2
1/2 x 3/8	S4034RC004003	S4036RC004003	1.12	1.88	100	0.2
3/4 x 1/4	S4034RC006002	S4036RC006002	1.33	2.00	70	0.4
3/4 x 3/8	S4034RC006003	S4036RC006003	1.33	2.00	70	0.4
3/4 x 1/2	S4034RC006004	S4036RC006004	1.33	2.00	70	0.4
1 x 1/4	S4034RC010002	S4036RC010002	1.75	2.38	35	0.8
1 x 3/8	S4034RC010003	S4036RC010003	1.75	2.38	35	0.8
1 x 1/2	S4034RC010004	S4036RC010004	1.75	2.38	35	0.8
1 x 3/4	S4034RC010006	S4036RC010006	1.75	2.38	35	0.8
1-1/4 x 1/2	S4034RC012004	S4036RC012004	2.25	2.62	20	1.4
1-1/4 x 3/4	S4034RC012006	S4036RC012006	2.25	2.62	20	1.4
1-1/4 x 1	S4034RC012010	S4036RC012010	2.25	2.62	20	1.4
1-1/2 x 1/4	S4034RC014002	S4036RC014002	2.50	3.12	15	2.1
1-1/2 x 3/8	S4034RC014003	S4036RC014003	2.50	3.12	15	2.1
1-1/2 x 1/2	S4034RC014004	S4036RC014004	2.50	3.12	15	2.1
1-1/2 x 3/4	S4034RC014006	S4036RC014006	2.50	3.12	15	2.1
1-1/2 x 1	S4034RC014010	S4036RC014010	2.50	3.12	15	2.8
1-1/2 x 1-1/4	S4034RC014012	S4036RC014012	2.50	3.12	15	2.1
2 x 1/2	S4034RC020004	S4036RC020004	3.00	3.38	10	3.0
2 x 3/4	S4034RC020006	S4036RC020006	3.00	3.38	10	3.0
2 x 1	S4034RC020010	S4036RC020010	3.00	3.38	10	4.5
2 x 1-1/4	S4034RC020012	S4036RC020012	3.00	3.38	10	3.3
2 x 1-1/2	S4034RC020014	S4036RC020014	3.00	3.38	10	3.9

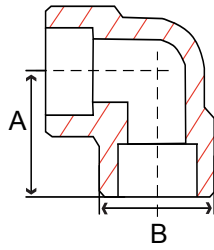
FORGED



**Fig. S4034HB & S4036HB - Hex Bushing**

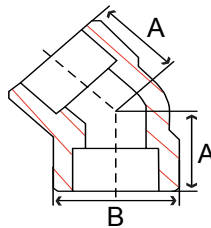
Size IN	Part Number		A IN	B IN	Packing	Weight LB
	304 / L	316 / L				
1/4 X 1/8	S4034HB002001	S4036HB002001	0.56	0.62	600	0.02
3/8 X 1/8	S4034HB003001	S4036HB003001	0.66	0.69	500	0.02
3/8 X 1/4	S4034HB003002	S4036HB003002	0.66	0.69	500	0.02
1/2 X 1/8	S4034HB004001	S4036HB004001	0.75	0.88	400	0.06
1/2 X 1/4	S4034HB004002	S4036HB004002	0.75	0.88	400	0.06
1/2 X 3/8	S4034HB004003	S4036HB004003	0.75	0.88	400	0.06
3/4 X 1/8	S4034HB006001	S4036HB006001	0.84	1.06	200	0.1
3/4 X 1/4	S4034HB006002	S4036HB006002	0.84	1.06	200	0.1
3/4 X 3/8	S4034HB006003	S4036HB006003	0.84	1.06	200	0.1
3/4 X 1/2	S4034HB006004	S4036HB006004	0.84	1.06	200	0.1
1 X 1/8	S4034HB010001	S4036HB010001	1.00	1.38	100	0.1
1 X 1/4	S4034HB010002	S4036HB010002	1.00	1.38	100	0.1
1 X 3/8	S4034HB010003	S4036HB010003	1.00	1.38	100	0.1
1 X 1/2	S4034HB010004	S4036HB010004	1.00	1.38	100	0.1
1 X 3/4	S4034HB010006	S4036HB010006	1.00	1.38	100	0.1
1-1/4 X 1/8	S4034HB012001	S4036HB012001	1.09	1.75	70	0.8
1-1/4 X 1/4	S4034HB012002	S4036HB012002	1.09	1.75	70	0.3
1-1/4 X 3/8	S4034HB012003	S4036HB012003	1.09	1.75	70	0.3
1-1/4 X 1/2	S4034HB012004	S4036HB012004	1.09	1.75	70	0.5
1-1/4 X 3/4	S4034HB012006	S4036HB012006	1.09	1.75	70	0.5
1-1/4 X 1	S4034HB012010	S4036HB012010	1.09	1.75	70	0.5
1-1/2 X 1/8	S4034HB014001	S4036HB014001	1.12	2.00	50	1.3
1-1/2 X 1/4	S4034HB014002	S4036HB014002	1.12	2.00	50	1.3
1-1/2 X 3/8	S4034HB014003	S4036HB014003	1.12	2.00	50	1.3
1-1/2 X 1/2	S4034HB014004	S4036HB014004	1.12	2.00	50	1.0
1-1/2 X 3/4	S4034HB014006	S4036HB014006	1.12	2.00	50	0.8
1-1/2 X 1	S4034HB014010	S4036HB014010	1.12	2.00	50	0.7
1-1/2 X 1-1/4	S4034HB014012	S4036HB014012	1.12	2.00	50	0.7
2 X 1/4	S4034HB020002	S4036HB020002	1.22	2.50	25	0.8
2 X 3/8	S4034HB020003	S4036HB020003	1.22	2.50	25	1.8
2 X 1/2	S4034HB020004	S4036HB020004	1.22	2.50	25	1.7
2 X 3/4	S4034HB020006	S4036HB020006	1.22	2.50	25	1.6
2 X 1	S4034HB020010	S4036HB020010	1.22	2.50	25	1.5
2 X 1-1/4	S4034HB020012	S4036HB020012	1.22	2.50	25	0.9
2 X 1-1/2	S4034HB020014	S4036HB020014	1.22	2.50	25	0.9
2-1/2 X 1/2	S4034HB024004	S4036HB024004	1.44	3.00	15	1.1
2-1/2 X 3/4	S4034HB024006	S4036HB024006	1.44	3.00	15	1.1
2-1/2 X 1	S4034HB024010	S4036HB024010	1.44	3.00	15	1.1
2-1/2 X 1-1/4	S4034HB024012	S4036HB024012	1.44	3.00	15	1.1
2-1/2 X 1-1/2	S4034HB024014	S4036HB024014	1.44	3.00	15	1.3
2-1/2 X 2	S4034HB024020	S4036HB024020	1.44	3.00	15	1.3
3 X 1/4	S4034HB030002	S4036HB030002	1.53	3.50	10	4.7
3 X 1/2	S4034HB030004	S4036HB030004	1.53	3.50	10	5.3
3 X 3/4	S4034HB030006	S4036HB030006	1.53	3.50	10	2.5
3 X 1	S4034HB030010	S4036HB030010	1.53	3.50	10	2.5
3 X 1-1/4	S4034HB030012	S4036HB030012	1.53	3.50	10	2.5
3 X 1-1/2	S4034HB030014	S4036HB030014	1.53	3.50	10	2.5
3 X 2	S4034HB030020	S4036HB030020	1.53	3.50	10	2.5
3 X 2-1/2	S4034HB030024	S4036HB030024	1.53	3.50	10	2.5

FORGED



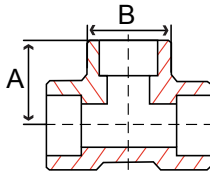
**Fig. S5034E & S5036E - 90° Elbow**

Size IN	Part Number		A IN	B IN	Packing	Weight LB
	304 / L	316 / L				
1/8	S5034E 001	S5036E 001	0.82	0.68	150	0.2
1/4	S5034E 002	S5036E 002	0.82	0.82	150	0.3
3/8	S5034E 003	S5036E 003	0.91	0.98	100	0.2
1/2	S5034E 004	S5036E 004	1.00	1.20	80	0.4
3/4	S5034E 006	S5036E 006	1.25	1.41	50	0.7
1	S5034E 010	S5036E 010	1.38	1.74	30	1.1
1-1/4	S5034E 012	S5036E 012	1.56	2.10	20	1.8
1-1/2	S5034E 014	S5036E 014	1.75	2.36	15	2.3
2	S5034E 020	S5036E 020	2.12	2.89	8	3.7
2-1/2	S5034E 024	S5036E 024	2.24	3.54	4	7.0
3	S5034E 030	S5036E 030	2.87	4.21	2	11.8



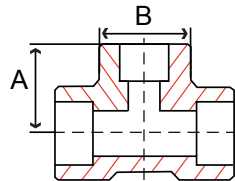
**Fig. S5034F & S5036F - 45° Elbow**

Size IN	Part Number		A IN	B IN	Packing	Weight LB
	304 / L	316 / L				
1/8	S5034F 001	S5036F 001	0.69	0.68	150	0.3
1/4	S5034F 002	S5036F 002	0.69	0.82	150	0.3
3/8	S5034F 003	S5036F 003	0.69	0.98	100	0.2
1/2	S5034F 004	S5036F 004	0.82	1.20	80	0.4
3/4	S5034F 006	S5036F 006	1.00	1.41	50	0.6
1	S5034F 010	S5036F 010	1.06	1.74	30	0.9
1-1/4	S5034F 012	S5036F 012	1.19	2.10	20	1.5
1-1/2	S5034F 014	S5036F 014	1.31	2.36	15	1.7
2	S5034F 020	S5036F 020	1.62	2.89	10	2.9
2-1/2	S5034F 024	S5036F 024	1.74	3.54	6	5.5
3	S5034F 030	S5036F 030	1.87	4.21	2	11.2



**Fig. S5034T & S5036T - Tee**

Size IN	Part Number		A IN	B IN	Packing	Weight LB
	304 / L	316 / L				
1/8	S5034T 001	S5036T 001	0.82	0.68	100	0.2
1/4	S5034T 002	S5036T 002	0.82	0.82	100	0.2
3/8	S5034T 003	S5036T 003	0.91	0.98	80	0.3
1/2	S5034T 004	S5036T 004	1.53	3.50	50	0.6
3/4	S5034T 006	S5036T 006	1.25	1.41	35	0.9
1	S5034T 010	S5036T 010	1.38	1.74	20	1.4
1-1/4	S5034T 012	S5036T 012	1.56	2.10	15	2.2
1-1/2	S5034T 014	S5036T 014	1.75	2.36	10	2.9
2	S5034T 020	S5036T 020	2.12	2.89	6	4.4
2-1/2	S5034T 024	S5036T 024	2.24	3.54	3	8.7
3	S5034T 030	S5036T 030	2.87	4.21	2	13.0

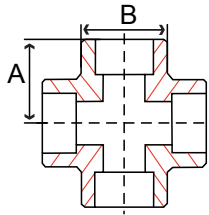


**Fig. S5034RT & S5036RT - Reducing Tee**

Size IN	Part Number		A IN	B IN	Packing	Weight LB
	304 / L	316 / L				
1/2 X 1/4	S5034RT004002	S5036RT004002	1.53	3.50	20	1.8
1/2 X 3/8	S5034RT004003	S5036RT004003	1.53	3.50	15	2.9
3/4 X 1/2	S5034RT006004	S5036RT006004	1.25	1.41	15	2.9
1 X 1/2	S5034RT010004	S5036RT010004	1.38	1.74	10	3.6
1 X 3/4	S5034RT010006	S5036RT010006	1.38	1.74	10	3.6
1-1/4 X 3/4	S5034RT012006	S5036RT012006	1.56	2.10	10	3.6
1-1/4 X 1	S5034RT012010	S5036RT012010	1.56	2.10	5	6.8
1-1/2 X 1/2	S5034RT014004	S5036RT014004	1.75	2.36	5	6.8
1-1/2 X 3/4	S5034RT014006	S5036RT014006	1.75	2.36	5	6.8
1-1/2 X 1	S5034RT014010	S5036RT014010	1.75	2.36	5	6.8
1-1/2 X 1-1/4	S5034RT014012	S5036RT014012	1.75	2.36	4	7.0
2 X 1/2	S5034RT020004	S5036RT020004	2.12	2.89	4	7.0
2 X 3/4	S5034RT020006	S5036RT020006	2.12	2.89	4	7.0
2 X 1	S5034RT020010	S5036RT020010	2.12	2.89	4	7.0
2 X 1-1/4	S5034RT020012	S5036RT020012	2.12	2.89	4	7.0
2 X 1-1/2	S5034RT020014	S5036RT020014	2.12	2.89		

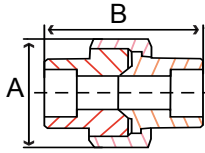
**FORGED**





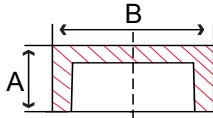
**Fig. S5034X & S5036X - Cross**

Size IN	Part Number		A IN	B IN	Packing	Weight LB
	304 / L	316 / L				
1/8	S5034X 001	S5036X 001	0.82	0.82	60	1.1
1/4	S5034X 002	S5036X 002	0.82	0.82	60	1.0
3/8	S5034X 003	S5036X 003	0.91	0.98	60	0.8
1/2	S5034X 004	S5036X 004	1.00	1.20	40	1.0
3/4	S5034X 006	S5036X 006	1.25	1.41	30	1.6
1	S5034X 010	S5036X 010	1.38	1.74	20	2.6
1-1/4	S5034X 012	S5036X 012	1.56	2.10	10	3.5
1-1/2	S5034X 014	S5036X 014	1.75	2.36	6	5.1
2	S5034X 020	S5036X 020	2.12	2.89	4	13.3



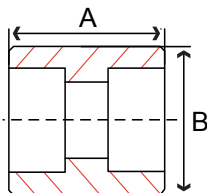
**Fig. S5034U & S5036U - Union**

Size IN	Part Number		A IN	B IN	Packing	Weight LB
	304 / L	316 / L				
1/8	S5034U 001	S5036U 001	1.66	1.48	70	0.6
1/4	S5034U 002	S5036U 002	1.66	1.48	70	0.6
3/8	S5034U 003	S5036U 003	1.83	1.66	70	0.5
1/2	S5034U 004	S5036U 004	2.00	1.93	50	1.0
3/4	S5034U 006	S5036U 006	2.31	2.38	35	1.0
1	S5034U 010	S5036U 010	2.42	2.78	20	1.6
1-1/4	S5034U 012	S5036U 012	2.86	3.35	14	2.4
1-1/2	S5034U 014	S5036U 014	3.00	3.70	10	3.5
2	S5034U 020	S5036U 020	3.50	4.42	5	4.7
2-1/2	S5034U 024	S5036U 024	4.25	5.22	3	7.7
3	S5034U 030	S5036U 030	4.42	6.15	2	11.3



**Fig. S5034C & S5036C - Cap**

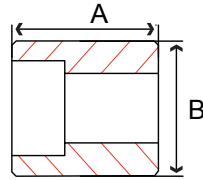
Size IN	Part Number		A IN	B IN	Packing	Weight LB
	304 / L	316 / L				
1/8	S5034C 001	S5036C 001	0.56	0.70	300	0.08
1/4	S5034C 002	S5036C 002	0.71	0.87	300	0.1
3/8	S5034C 003	S5036C 003	0.77	1.03	250	0.2
1/2	S5034C 004	S5036C 004	0.90	1.27	130	0.3
3/4	S5034C 006	S5036C 006	1.02	1.50	80	0.5
1	S5034C 010	S5036C 010	1.07	1.80	50	0.9
1-1/4	S5034C 012	S5036C 012	1.22	2.23	30	1.3
1-1/2	S5034C 014	S5036C 014	1.29	2.55	25	2.1
2	S5034C 020	S5036C 020	1.53	2.96	15	3.1
2-1/2	S5034C 024	S5036C 024	1.65	3.64	1	6.0
3	S5034C 030	S5036C 030	1.77	4.27	1	9.3
4	S5034C 040	S5036C 040	1.91	5.40	1	10.6



**Fig. S5034CP & S5036CP - Full Coupling**

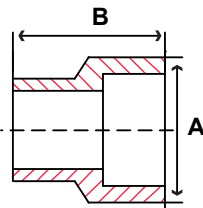
Size IN	Part Number		A IN	B IN	Packing	Weight LB
	304 / L	316 / L				
1/8	S5034CP001	S5036CP001	1.01	0.97	350	0.08
1/4	S5034CP002	S5036CP002	1.01	0.87	350	0.1
3/8	S5034CP003	S5036CP003	1.01	1.03	250	0.1
1/2	S5034CP004	S5036CP004	1.14	1.27	120	0.2
3/4	S5034CP006	S5036CP006	1.38	1.50	80	0.3
1	S5034CP010	S5036CP010	1.50	1.80	50	0.6
1-1/4	S5034CP012	S5036CP012	1.50	2.23	30	0.9
1-1/2	S5034CP014	S5036CP014	1.50	2.55	25	1.3
2	S5034CP020	S5036CP020	2.00	2.96	15	1.8
2-1/2	S5034CP024	S5036CP024	2.00	3.64	10	3.0
3	S5034CP030	S5036CP030	2.00	4.27	6	3.9
4	S5034CP040	S5036CP040	2.25	5.40	4	6.2

FORGED

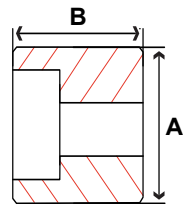


**Fig. S5034HC & S5036HC Half Coupling**

Size IN	Part Number		A IN	B IN	Packing	Weight LB
	304 / L	316 / L				
1/8	S5034HC001	S5036HC001	1.00	0.68	400	0.2
1/4	S5034HC002	S5036HC002	1.00	0.86	400	0.4
3/8	S5034HC003	S5036HC003	1.06	1.01	300	0.6
1/2	S5034HC004	S5036HC004	1.26	1.27	150	0.7
3/4	S5034HC006	S5036HC006	1.44	1.50	80	1.4
1	S5034HC010	S5036HC010	1.62	1.80	50	2.4
1-1/4	S5034HC012	S5036HC012	1.69	2.23	30	3.5
1-1/2	S5034HC014	S5036HC014	1.75	2.55	25	4.6
2	S5034HC020	S5036HC020	2.24	2.96	15	8.1
2-1/2	S5034HC024	S5036HC024	2.31	3.64	10	3.0
3	S5034HC030	S5036HC030	2.37	4.27	6	3.9
4	S5034HC040	S5034HC040	2.63	5.40	1	6.2



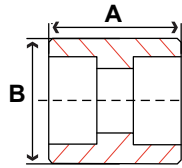
Type 1



Type 2

**Fig. S5034IN & S5036IN - Insert Fitting**

Size IN	Part Number		A IN	B IN	Type	Packing	Weight LB
	304/L	316/L					
1/2 x 1/4	S5034IN004002	S5036IN004002	1.25	1.23	1	150	0.2
1/2 x 3/8	S5034IN004003	S5036IN004003	1.25	1.23	1	150	0.2
3/4 x 1/4	S5034IN006002	S5036IN006002	1.06	1.46	1	100	0.3
3/4 x 3/8	S5034IN006003	S5036IN006003	1.06	1.46	2	100	0.3
3/4 x 1/2	S5034IN006004	S5036IN006004	1.06	1.46	2	100	0.3
1 x 1/4	S5034IN010002	S5036IN010002	1.12	1.78	2	80	0.5
1 x 3/8	S5034IN010003	S5036IN010003	1.12	1.78	2	80	0.5
1 x 1/2	S5034IN010004	S5036IN010004	1.12	1.78	2	80	0.5
1 x 3/4	S5034IN010006	S5036IN010006	1.12	1.78	1	80	0.5
1-1/4 x 1/4	S5034IN012002	S5036IN012002	1.25	2.16	2	70	0.9
1-1/4 x 3/8	S5034IN012003	S5036IN012003	1.25	2.16	2	70	0.9
1-1/4 x 1/2	S5034IN012004	S5036IN012004	1.25	2.16	2	70	0.9
1-1/4 x 3/4	S5034IN012006	S5036IN012006	1.25	2.16	2	70	0.9
1-1/4 x 1	S5034IN012010	S5036IN012010	1.25	2.16	1	70	0.9
1-1/2 x 3/8	S5034IN014003	S5036IN014003	1.31	2.42	2	50	1.2
1-1/2 x 1/2	S5034IN014004	S5036IN014004	1.31	2.42	2	50	1.2
1-1/2 x 3/4	S5034IN014006	S5036IN014006	1.31	2.42	2	50	1.2
1-1/2 x 1	S5034IN014010	S5036IN014010	1.31	2.42	2	50	1.2
1-1/2 x 1-1/4	S5034IN014012	S5036IN014012	1.31	2.42	1	50	1.2
2 x 3/8	S5034IN020003	S5036IN020003	1.50	2.96	2	25	1.9
2 x 1/2	S5034IN020004	S5036IN020004	1.50	2.96	2	25	1.9
2 x 3/4	S5034IN020006	S5036IN020006	1.50	2.96	2	25	1.9
2 x 1	S5034IN020010	S5036IN020010	1.50	2.96	2	25	1.9
2 x 1-1/4	S5034IN020012	S5036IN020012	1.50	2.96	2	25	1.9
2 x 1-1/2	S5034IN020014	S5036IN020014	1.50	2.96	1	25	1.9
2-1/2 x 1/2	S5034IN024004	S5036IN024004	2.12	3.70	2	12	2.6
2-1/2 x 3/4	S5034IN024006	S5036IN024006	2.12	3.70	2	12	2.6
2-1/2 x 1	S5034IN024010	S5036IN024010	2.12	3.70	2	12	2.6
2-1/2 x 1-1/4	S5034IN024012	S5036IN024012	2.12	3.70	2	12	2.6
2-1/2 x 1-1/2	S5034IN024014	S5036IN024014	2.12	3.70	2	12	2.6
2-1/2 x 2	S5034IN024020	S5036IN024020	2.12	3.70	1	12	2.6
3 x 1	S5034IN030010	S5036IN030010	1.87	4.30	2	10	3.9
3 x 1-1/4	S5034IN030012	S5036IN030012	1.87	4.30	2	10	3.9
3 x 1-1/2	S5034IN030014	S5036IN030014	1.87	4.30	2	10	3.9
3 x 2	S5034IN030020	S5036IN030020	1.87	4.30	2	10	3.9
3 x 2-1/2	S5034IN030024	S5036IN030024	1.87	4.30	1	10	3.9

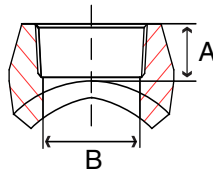


**Fig. S5034RC & S5036RC - Reducing Coupling**

Size IN	Part Number		A IN	B IN	Packing	Weight LB
	304/L	316/L				
1/2 X 1/8	S5034RC004001	S5036RC004001	1.14	1.27	120	0.2
1/2 X 1/4	S5034RC004002	S5036RC004002	1.14	1.27	120	0.2
1/2 X 3/8	S5034RC004003	S5036RC004003	1.14	1.27	120	0.2
3/4 X 1/4	S5034RC006002	S5036RC006002	1.38	1.50	80	0.4
3/4 X 3/8	S5034RC006003	S5036RC006003	1.38	1.50	80	0.4
3/4 X 1/2	S5034RC006004	S5036RC006004	1.38	1.50	80	0.4
1 X 1/4	S5034RC010002	S5036RC010002	1.50	1.80	50	0.5
1 X 3/8	S5034RC010003	S5036RC010003	1.50	1.80	50	0.5
1 X 1/2	S5034RC010004	S5036RC010004	1.50	1.80	50	0.5
1 X 3/4	S5034RC010006	S5036RC010006	1.50	1.80	50	0.5
1-1/4 X 1/2	S5034RC012004	S5036RC012004	1.50	2.23	30	1.1
1-1/4 X 3/4	S5034RC012006	S5036RC012006	1.50	2.23	30	1.1
1-1/4 X 1	S5034RC012010	S5036RC012010	1.50	2.23	30	1.1
1-1/2 X 3/8	S5034RC014003	S5036RC014003	1.50	2.55	25	1.3
1-1/2 X 1/2	S5034RC014004	S5036RC014004	1.50	2.55	25	1.3
1-1/2 X 3/4	S5034RC014006	S5036RC014006	1.50	2.55	25	1.3
1-1/2 X 1	S5034RC014010	S5036RC014010	1.50	2.55	25	1.3
1-1/2 X 1-1/4	S5034RC014012	S5036RC014012	1.50	2.55	25	1.3
2 X 1/2	S5034RC020004	S5036RC020004	2.00	2.96	15	2.6
2 X 3/4	S5034RC020006	S5036RC020006	2.00	2.96	15	2.3
2 X 1	S5034RC020010	S5036RC020010	2.00	2.96	15	2.1
2 X 1-1/4	S5034RC020012	S5036RC020012	2.00	2.96	15	2.1
2 X 1-1/2	S5034RC020014	S5036RC020014	2.00	2.96	15	2.6
2-1/2 X 2	S5034RC024020	S5036RC024020	2.00	3.64	6	3.1
3 X 1-1/2	S5034RC030014	S5036RC030014	2.00	4.27	6	4.1
3 X 2	S5034RC030020	S5036RC030020	2.00	4.27	6	4.1

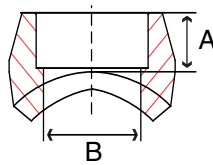
FORGED

**Fig. S4534T0 & S4536T0 3000# Threaded Outlet**



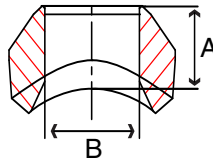
Size IN	Run IN	Part Number		A IN	B IN	Weight LB
		304 / L	316 / L			
1/4	3/8" - 36"	S4534T0002	S4536T0002	0.75	0.63	0.1
3/8	1/2" - 36"	S4534T0003	S4536T0003	0.75	0.63	0.2
1/2	3/4" - 36"	S4534T0004	S4536T0004	0.81	0.75	0.3
3/4	1" - 36"	S4534T0006	S4536T0006	1.00	0.94	0.5
1	2" - 36"	S4534T0010	S4536T0010	1.05	1.19	0.8
1-1/4	3-1/2" - 36"	S4534T0012	S4536T0012	1.31	1.43	1.0
1-1/2	5" - 36"	S4534T0014	S4536T0014	1.31	1.75	1.5
2	8" - 36"	S4534T0020	S4536T0020	1.38	2.00	2.6
2-1/2	10" - 36"	S4534T0024	S4536T0024	1.50	2.56	3.7
3	8" - 36"	S4534T0030	S4536T0030	1.81	3.00	13.1

**Fig. S4534S0 & S4536S0 3000# Socket Weld Outlet**



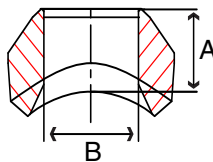
Size IN	Run IN	Part Number		A IN	B IN	Weight LB
		304 / L	316 / L			
1/4	3/8" - 36"	S4534S0002	S4536S0002	0.81	0.49	0.1
3/8	1/2" - 36"	S4534S0003	S4536S0003	1.00	0.62	0.2
1/2	3/4" - 36"	S4534S0004	S4536S0004	1.06	0.82	0.3
3/4	1" - 36"	S4534S0006	S4536S0006	1.31	1.04	0.5
1	2" - 36"	S4534S0010	S4536S0010	1.31	1.38	0.8
1-1/4	3-1/2" - 36"	S4534S0012	S4536S0012	1.37	1.61	1.0
1-1/2	5" - 36"	S4534S0014	S4536S0014	1.50	2.06	1.7
2	8" - 36"	S4534S0020	S4536S0020	1.81	2.46	2.9
2-1/2	10" - 36"	S4534S0024	S4536S0024	2.00	3.06	4.2
3	8" - 36"	S4534S0030	S4536S0030	2.50	4.75	13.1

**Fig. S4534W04 & S4536W04 Sch 40 3000# Butt Weld Outlet**



Size IN	Run IN	Part Number		A IN	B IN	Weight LB
		304 / L	316 / L			
1/4	3/8" - 36"	S4534W04002	S4536W04002	0.62	0.36	0.8
3/8	1/2" - 36"	S4534W04003	S4536W04003	0.75	0.49	0.1
1/2	3/4" - 36"	S4534W04004	S4536W04004	0.75	0.62	0.1
3/4	1" - 36"	S4534W04006	S4536W04006	0.87	0.82	0.2
1	2" - 36"	S4534W04010	S4536W04010	1.06	1.04	0.5
1-1/4	3-1/2" - 36"	S4534W04012	S4536W04012	1.25	1.38	0.8
1-1/2	5" - 36"	S4534W04014	S4536W04014	1.31	1.61	1.0
2	8" - 36"	S4534W04020	S4536W04020	1.50	2.06	1.7
2-1/2	10" - 36"	S4534W04024	S4536W04024	1.62	2.46	2.5
3	8" - 36"	S4534W04030	S4536W04030	1.75	3.06	3.8

**Fig. S4534W08 & S4636W08 Sch 80 3000# Butt Weld Outlet**



Size IN	Run IN	Part Number		A IN	B IN	Weight LB
		304 / L	316 / L			
1/4	3/8" - 36"	S4534W08002	S4536W08002	0.62	0.36	0.8
3/8	1/2" - 36"	S4534W08003	S4536W08003	0.75	0.49	0.1
1/2	3/4" - 36"	S4534W08004	S4536W08004	0.75	0.62	0.1
3/4	1" - 36"	S4534W08006	S4536W08006	0.87	0.82	0.2
1	2" - 36"	S4534W08010	S4536W08010	1.06	1.04	0.5
1-1/4	3-1/2" - 36"	S4534W08012	S4536W08012	1.25	1.38	0.8
1-1/2	5" - 36"	S4534W08014	S4536W08014	1.31	1.61	1.0
2	8" - 36"	S4534W08020	S4536W08020	1.50	2.06	1.7
2-1/2	10" - 36"	S4534W08024	S4536W08024	1.62	2.46	2.5
3	8" - 36"	S4534W08030	S4536W08030	1.75	3.06	3.8

FORGED