

Automotive Lift

R E P A I R P A R T S



SVI International, Inc.
(800) 321-8173 • fax: (800) 899-1784
155 Harvestore Drive • DeKalb, IL 60115
www.sviinternational.com

BALTIMORE • CHICAGO • LOS ANGELES

Repair Parts for: **Globe & Ford Smith**

Repair Parts for:
Globe & Ford Smith
LR9400G

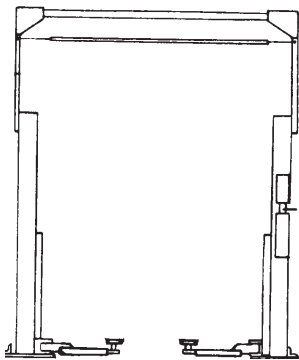
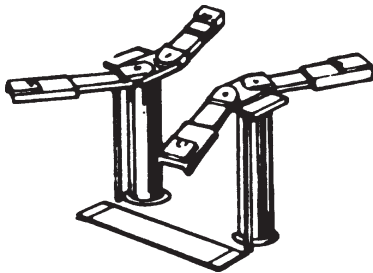


Table of Contents

for Globe & Ford Smith

In-Ground and Surface-Mount Lifts

Lift Packing Cross Reference Information..... 2-6

Single Post Lifts7
 Models: FS-10A & H

Twin Post Side by Side Lifts..... 8-9
 Models: F-27, F-28, FS-27, FS-28,
 FSN-28, FSR-28

Twin Post Fore and Aft Car and Truck Lifts10-11
 Models: MP-28A & E, MP-810A & E

Twin Post Fore and Aft Truck and Bus Lifts 12-13
 Models: MP-210A & E, SHMP-210A & E,
 SHMP-310A & E, SHMP-310EDR

Fixed Piston Lifts (12-5/8") for Truck and Bus Lifts14
 Models: SHRS-212E, D-SH-12E, MP-10-12-10E,
 MP-1012E, SHMP-1012E

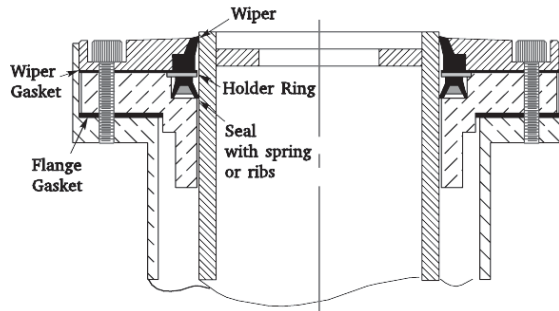
Oil Control Valves and Air/Oil Tanks.....15

Two Post Surface-Mount Lifts16
 Models: AFO7, AFO7A and EH, AFO9, 9A, EH

[BALTIMORE • CHICAGO • LOS ANGELES]
(800) 321-8173 • fax: (800) 899-1784
www.sviinternational.com



Lift Packing Cross Reference



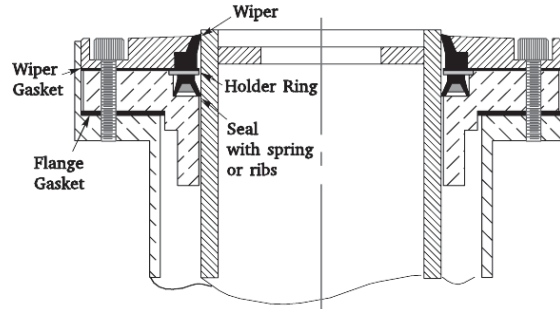
7-1/2"
Seals

U-Cup Style Pictured

| SVI Lift Packing Kit | Ref. OEM Kit No. | Reference Information | Plunger Diameter | Contents and Descriptions SVI Lift Packing Kits |
|----------------------|------------------|--|------------------|---|
| BH-1736 | A14434 | MP-27 & MP-127 Fore & Aft Two Post Hoist | 7-1/2" | 2 - 8-3/4" x 7-1/2" Neo Fab Vees 1 - 8-3/4" x 7-1/2" Bottom Adapter 1 - Gasket 1 - Felt Wiper 1 - O'ring 6 - Springs |
| BH-1738 | S-77 | SR, F-27, Type 3-5 Two Post SR-27 Type 78, SR-36 Str. | 7-1/2" | 6 - 8-1/2" x 7-1/2" Synthetic Vees (302X751) 2 - Gaskets (B15018-310) Old Style 2 - Gaskets (B15220-310) KIT PACKS BOTH POSTS Optional: BH-1780-02 Rubber Wiper (335X7) |
| BH-1739X | U70 + W74 | SR-27 Type 7, 71, 72, 73 | 7-1/2" | 1 - 9-1/2" x 7-1/2" Synthetic U Cup (323X7) 2 - Gaskets (B15015-310) 1 - Wiper (335X7) |
| BH-1771X | U71 + W74 | SR-27 Type 1, 2, 74, 76, 77, 78, 700, 707, FS & FS-27 Type 706, SR-ER, F-77, SER-78, Type 713, S-7 Type 75-79, F-27 Type 4, 701, 702, 709, 710, V-7 Type 708 | 7-1/2" | 1 - 9-1/2" x 7-1/2" Synthetic UCup (323X7) 2 - Gaskets (B15015-310) 1 - Gasket (B15210-308) 2 - Gaskets (B15018-310) Old Style 1 - Wiper (335X7) |
| BH-1779X | U73 + W74 | SR-78, FS-27 Type 719, 720, 721, V-7 Type 722, ROR-278 | 7-1/2" | 1 - 9-1/2" x 7-1/2" Synthetic U Cup (323X7) 1 - Gasket (B37453) 1 - Gasket (B37446) 1 - Wiper (335X7) |
| BH-1780XU | UW-73 | Universal For all 7-1/2" Diameter Plungers with U Packing | 7-1/2" | 1 - 9-1/2" x 7-1/2" Synthetic U Cup (323X7) 2 - Gaskets (B15015-310) 2 - Gaskets (B15018-310) Old Style 2 - Gaskets (B15220-310) 1 - Gasket (B15210-308) 1 - Gasket (B37453) 1 - Gasket (B37446) 1 - Wiper (335X7) |

Please note: Some of the older leather style packings may also be available. Call SVI for details.

Lift Packing Cross Reference



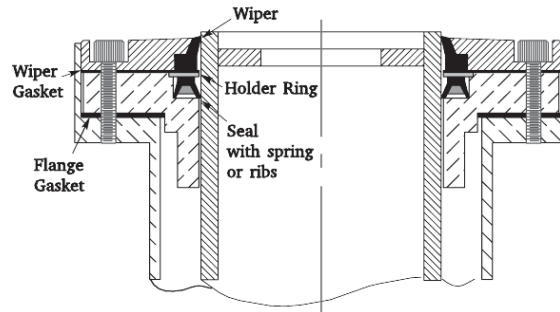
U-Cup Style Pictured

7-1/2" & 8-1/2"
Seals

| SVI Lift Packing Kit | Ref. OEM Kit No. | Reference Information | Plunger Diameter | Contents and Descriptions SVI Lift Packing Kits |
|----------------------|------------------|--|------------------|--|
| BH-1786 | Q70 | SR-78, FS-27, Type 715, SER-78 Type 716, EF-77 | 7-1/2" | 1 - Quad Ring 1 - Wiper Ring (B33165-2) 1 - Gasket |
| BH-1742 | C-10 | 1928-30, 1931 Standard | 8-1/2" | 1 - 10-1/8" X Solid x 1-1/2" x 1/4" Leather cup 1 - Felt Wiper (288) |
| BH-1743 | C-11 | 1942-46 Standard Twin Post | 8-1/2" | 1 - 10-1/8" x 8-1/8" x 1-1/4" Leather Cup 1 - Gasket (79X A8125-310) |
| BH-1744X | S87 + W85 | P-28 and SR-28 Types 83, 86, 87 S-8 Type 84 Twin Post | 8-1/2" | 6 - 9-1/2" x 8-1/2" Rubber Vees 2 - Top and Bottom Adapters 2 - Gaskets (B15108-310) Old Style 2 - Gaskets (B15220-310) 2 - Wipers <u>KIT PACKS BOTH POSTS</u> |
| BH-1745 | UC-14 | 1941-1942 Superseal | 8-1/2" | 2 - 10-1/2" x 8-1/2" Synthetic U's (291 323X8) 1 - 10-1/8" x 8-1/8" x 1-1/4" Leather Cup |
| BH-1746X | U81 + W85 | SR, S-8, Type 82, 98, 105, P-28 and SR-28, Types 8, 81, 85, F-8, V-8, PSER, PB6036, SH, "W" | 8-1/2" | 1 - 10-1/2" x 8-1/2" Ribbed U (323X8) 2 - Gaskets (B15018-310) Old Style 1 - Gasket (B15220-308) 2 - Gaskets (B15220-310) 1 - Wiper (335X8) |
| BH-1746SP | U81 + W85 | Spring Style SR, S-8, Type 82, 98, 105, P-28 and SR-28, Types 8, 81, 85, F-8, V-8, PSER, PB6036, SH, "W" | 8-1/2" | 1 - 10-1/2" x 8-1/2" Synthetic U (323X8) 1 - Spreader Spring 2 - Gaskets (B15018-310) Old Style 1 - Gasket (B15220-308) 2 - Gaskets (B15220-310) 1 - Wiper (335X8) |
| BH-1788X | U81 + W85 | SR-28 (1951), Rear SR-78, Front SR-810 & P-28 (Type 92), FH, SH, V-8, AS, BS, FB-8, BS, ROR-278, FS-28 Side by Side | 8-1/2" | 1 - 10-1/2" x 8-1/2" Ribbed U (323X8) 1 - Gasket (B37444) 1 - Gasket (B37446) 1 - Wiper (335X8) |



Lift Packing Cross Reference

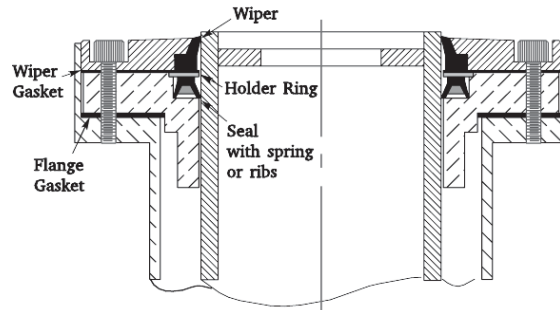


U-Cup Style Pictured

8-1/2" & 10-5/8"
Seals

| SVI Lift Packing Kit | Ref. OEM Kit No. | Reference Information | Plunger Diameter | Contents and Descriptions SVI Lift Packing Kits |
|------------------------------|----------------------|--|------------------|---|
| BH-1788SP | U81 + W85 | Spring Style SR-28 (1951), Rear SR-78, Front SR-810 & P-28 (Type 92), FH, SH, V-8, AS, BS, FB-8, BS, ROR-278, FS-28 Side by Side | 8-1/2" | 1 - 10-1/2" x 8-1/2" Synthetic U (323X8) 1 - Spreader Spring 1 - Gasket (B37444) 1 - Gasket (B37446) 1 - Wiper (335X8) |
| BH-1782XU | UW-81 | Universal for all 8-1/2" Diameter Plungers with U Packing | 8-1/2" | 1 - 10-1/2" x 8-1/2" Ribbed U (323X8) 2 - Gaskets (B15018-310) Old Style 1 - Gasket (B15220-308) 2 - Gaskets (B15220-310) 1 - Gasket (B37444) 1 - Gasket (B37446) 1 - Wiper (335X8) |
| BH-1782XUU USA Dist. Only | UW81 | Universal Uni-Seal Kit for 8-1/2" Diameter | 8-1/2" | 1 - 8-1/2" Uniseal (Seal & Wiper) Gaskets from BH-1782XU |
| BH-1782SP | UW-81 | Spring Style Universal for all 8-1/2" Diameter Plungers with U Packing | 8-1/2" | 1 - 10-1/2" x 8-1/2" Synthetic U (323X8) 1 - Spreader Spring 2 - Gaskets (B15018-310) Old Style 1 - Gasket (B15220-308) 2 - Gaskets (B15220-310) 1 - Gasket (B37444) 1 - Gasket (B37446) 1 - Wiper (335X8) |
| BH-1789 | Q73 | SR, Type 108SER | 8-1/2" | 1 - Quad Ring 1 - Synthetic Wiper (B33165-1) 1 - Gasket (B33166) |
| BH-1791 | C-12 | 1946-1947 Standard Twin Post | 8-1/2" | 1 - 10-1/8" x 8-1/8" x 1-1/4" Leather Cup 1 - Gasket (B15020-310) |
| BH-1794 | C-13 C-14 | 1948 -15, -13 to -22 except -20 | 8-1/2" | 1 - 10-1/8" x 8-1/8" x 1-1/4" Leather Cup 1 - Gasket (B15020-310) 1 - Gasket (B15018-310) Old Style |
| BH-1747X | U100 or U101 + W-104 | ER-210, SR810 Types 3 & 15, Full & Semi Hydraulic, FS-10, PFW10AS, P10AS, R1010BS | 10-5/8" | 1 - 12-5/8" x 10-5/8" Ribbed U Cup 2 - Gaskets (B15237-310) 2 - Gaskets (B15237-308) 1 - Wiper Seal (293 335X10) |

Lift Packing Cross Reference



U-Cup Style Pictured

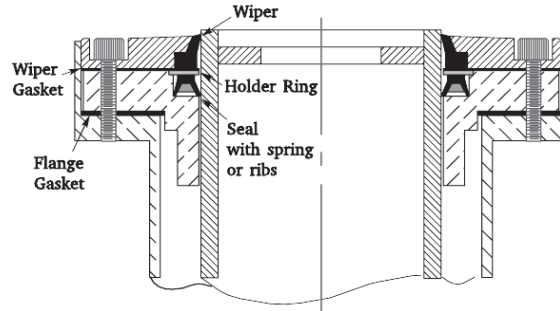
10-5/8"
Seals

| SVI Lift Packing Kit | Ref. OEM Kit No. | Reference Information | Plunger Diameter | Contents and Descriptions SVI Lift Packing Kits |
|-------------------------------------|----------------------|--|------------------|--|
| BH-1747SP | U100 or U101 + W-104 | Spring Style ER-210, SR810 Types 3 & 15, Full & Semi Hydraulic, FS-10, PFW10AS, P10AS, R1010BS | 10-5/8" | 1 - 12-5/8" x 10-5/8" Synthetic U Cup 1 - Spreader Spring 2 - Gaskets (B15237-310) 2 - Gaskets (B15237-308) 1 - Wiper Seal (293 335X10) |
| BH-1792 | Q77, MP710 | Full & Semi Hydraulic using 10-5/8" Quad Ring | 10-5/8" | 1 - Quad Ring 1 - Synthetic Wiper (33165-3) |
| BH-1795X | U102 + W-104 | Full & Semi Hydraulic Type 10-75, 76, 10-78 through 10-94 | 10-5/8" | 1 - 12-5/8" x 10-5/8" Ribbed U Cup 1 - Gaskets (B35992) 2 - Gaskets (B35052) 1 - Wiper Seal (293 335X10) |
| BH-1795SP | U102 + W-104 | Spring Style Full & Semi Hydraulic Type 10-75, 76, 10-78 through 10-94 | 10-5/8" | 1 - 12-5/8" x 10-5/8" Synthetic U Cup 1 - Spreader Spring 1 - Gaskets (B35992) 2 - Gaskets (B35052) 1 - Wiper Seal (293 335X10) |
| BH-1797X | UP-100 + W104 | Pacific Globe F10 & Rear SR810, Serial numbers starting with 2L, PFS10ASR | 10-5/8" | 1 - 12-5/8" x 10-5/8" Ribbed U Cup 2 - Gaskets (B15243-308) 1 - Wiper Seal (293 335X10) |
| BH-1797SP | UP-100 + W104 | Spring Style Pacific Globe F10 & Rear SR810, Serial numbers starting with 2L, PFS10ASR | 10-5/8" | 1 - 12-5/8" x 10-5/8" Synthetic U Cup 1 - Spreader Spring 2 - Gaskets (B15243-308) 1 - Wiper Seal (293 335X10) |
| BH-1798XU | UW-102 | Universal for all 10-5/8" Diameter Plungers with U Packing | 10-5/8" | 1 - 12-5/8" x 10-5/8" Ribbed U Cup 2 - Gaskets (B15237-310) 2 - Gaskets (B15237-308) 1 - Gasket (B35992) 2 - Gaskets (B35052) 2 - Gaskets (B15243-308) 1 - Wiper Seal (293 335X10) |
| BH-1798XUU USA Dist. Only | UW-102 | Universal for all 10-5/8" Diameter Plungers with U Packing | 10-5/8" | 1 - 10-5/8" Uniseal (Seal & Wiper) Gaskets from BH-1798XU |

Hold Down Rings for all 10-5/8" U Cup style packings are available. Order BH-9420-14 (Metal) or BH-9420-14L (2L series)



Lift Packing Cross Reference

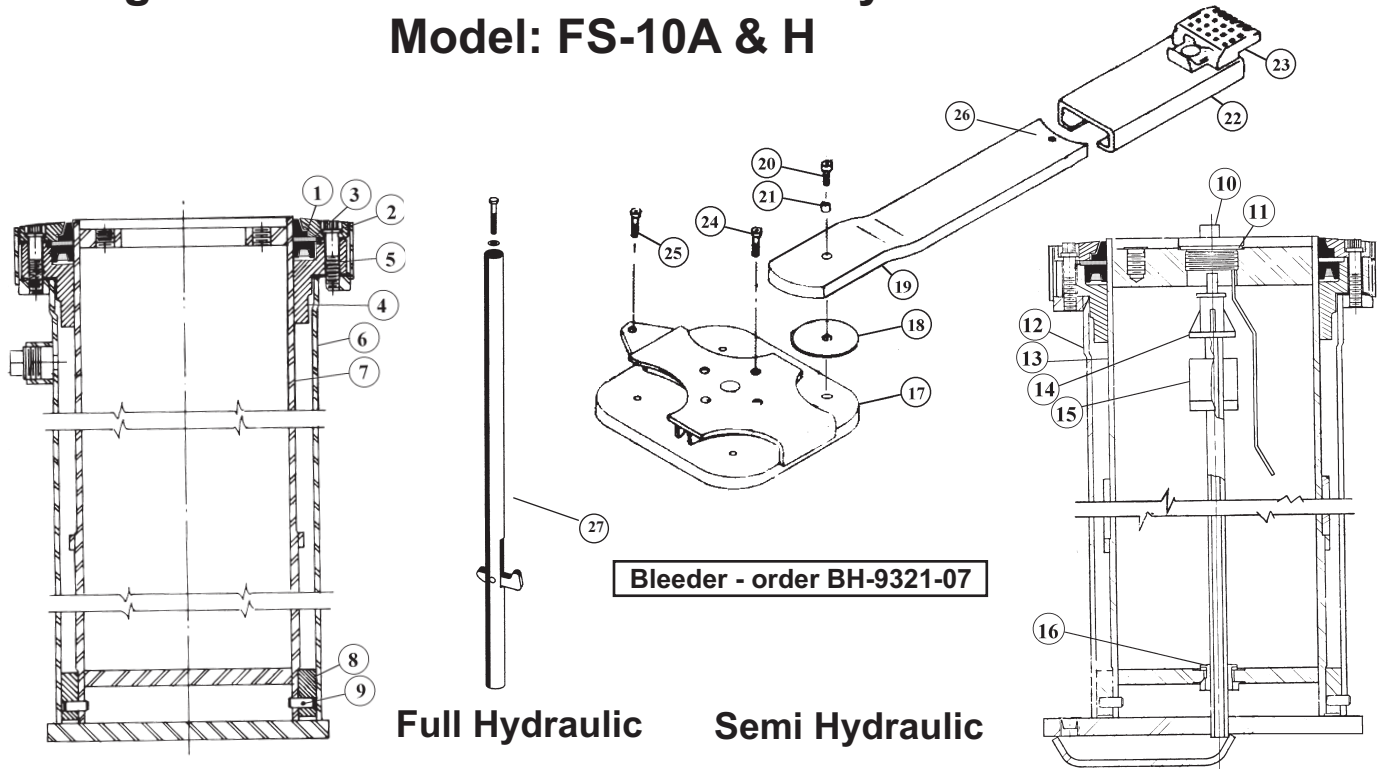


U-Cup Style Pictured

10-5/8" & 12-5/8"
Seals

| SVI Lift Packing Kit | Ref. OEM Kit No. | Reference Information | Plunger Diameter | Contents and Descriptions SVI Lift Packing Kits |
|----------------------|----------------------|--|------------------|--|
| BH-1798SP | UW-102 | Spring Style Universal for all 10-5/8" Diameter Plungers with U Packing | 10-5/8" | 1 - 12-5/8" x 10-5/8" Synthetic U Cup 1 - Spreader Spring 2 - Gaskets (B15237-310) 2 - Gaskets (B15237-308) 1 - Gasket (B35992) 2 - Gaskets (B35052) 2 - Gaskets (B15243-308) 1 - Wiper Seal (293 335X10) |
| BH-1709X | UW-121 | for all 12-5/8" Truck & Bus Hoists | 12-5/8" | 1 - 14-7/8" x 12-5/8" Ribbed U Cup (323X12) 1 - Gasket 2 - Gaskets (B15256-310) 1 - Wiper Seal (293 323X12) |
| BH-1709SP | UW-121 | Spring Style for all 12-5/8" Truck & Bus Hoists | 12-5/8" | 1 - 14-7/8" x 12-5/8" Rubber U Cup (323X12) 1 - Spreader Spring 1 - Gasket 2 - Gaskets (B15256-310) 1 - Wiper Seal (293 323X12) |
| BH-1784 | CL415846 CL408101 | WAYNE F60686, E6068SLOC, A2520 | 10-1/2" Nominal | 1 - 10-1/2" ID Quad Ring 1 - Wiper (H354500) 1 - Gasket (CL10353) |
| BH-1772 | CL2029-2 | WAYNE | 10-5/8" | 1 - 14-1/2" x 10-9/32 x 1-3/8" x 7/32" Leather Flange with 2 Spring Grooves 1 - 36" x 1/2" Square Felt Wiper 1 - 15-3/4" x 12-7/8" x 1/16" Gasket |
| BH-1773 | | WAYNE A6068F | 10-5/8" | 3 - 11-3/8" x 10-5/8" x 1-1/16" Neo-Fab Vees 1 - Top and 1 Bottom Adapter 1 - 34-1/2" Wiper 1 - 15-1/4" Gasket |

Single Post 10-5/8" Full and Semi-Hydraulic Lifts Model: FS-10A & H

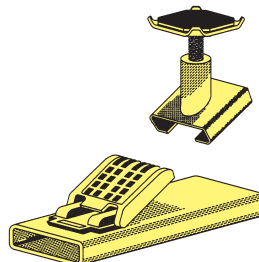


Full Hydraulic

Semi Hydraulic

| Item | SVI # | OEM # | Req | Description |
|------|-------------------|------------|-----|----------------------------------|
| 1 | BH-1798XU | UW102 | 1 | Lift Packing Kit |
| | BH-1798SP | UW102 | 1 | Spring Style Lift Packing Kit |
| 2 | BH-9420-15 | B-35054 | 1 | Wiper Seal Cover (Gland) 12 Bolt |
| 3 | BH-9420-14 | B-35056 | 1 | Holder Ring (Steel) |
| | BH-9420-14L | | 1 | Holder Ring (for 2L Plungers) |
| 4 | BH-9420-16 | B-35055 | 1 | Upper Guide Bearing |
| 5 | F-SC-0625-11-2750 | 438XG22 | 12 | Capscrew |
| 6 | BH-9420-04 | B-35573-6 | 1 | Casing Assembly (Full Hyd.) |
| 7 | BH-9420-05 | B-35570-12 | 1 | Plunger Assembly (Full Hyd.) |
| 8 | BH-9420-08 | B-41569 | 1 | Lower Guide Bearing |
| 9 | BH-9420-03 | 359XM1250 | 1 | Spring Pin |
| 10 | BH-9420-01 | B-41538-1 | 1 | Access Plug/Dipstick New 2" |
| 11 | BH-9420-02 | 204X3 | 1 | Access Plug Gasket 2" |
| 12 | BH-9420-06 | B-38701-3 | 1 | Casing Assembly (Semi Hyd.) |
| 13 | BH-9420-07 | B-38702-4 | 1 | Plunger Ass'y (Semi-Hyd.) |

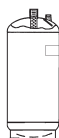
| Item | SVI # | OEM # | Req | Description |
|------|-------------------|-------------|-----|--------------------------------|
| 14 | BH-9420-17 | A-41085 | 1 | Float Stop |
| 15 | BH-9420-18 | A-39183 | 1 | Float |
| 16 | BH-9420-19* | A-43457 | 1 | New Orifice Seals w/o tools |
| | BH-9420-19A* | A-43457-G01 | 1 | New Style Orifice Kit w/ tools |
| 17 | BH-9420-21 | C-42876 | 1 | Bolster Assembly |
| 18 | BH-9420-23 | B-32101-2 | 4 | Wear Washer |
| 19 | BH-9420-22 | B-42936 | 4 | Arm Assembly |
| 20 | F-TC-0625-11-1750 | 426XG-N14 | 4 | Locking Cap Screw |
| 21 | BH-9420 | A-40689 | 4 | Arm Bushing/Spacer |
| 22 | BH-9420-09 | C-34354 | 4 | Sleeve and Adapter Assy. |
| -- | BH-9420-29 | | | Rubber Pad Adapter |
| 23 | BH-9420-11 | C-34355 | 4 | Lifting Pad only |
| | F-RP-250-1250 | 359XH0750 | 2 | Stop Pin |
| 24 | F-SC-0875-9-2750 | 438X122 | 4 | Cap Screw |
| 25 | F-SC-0625-11-2500 | 430XG20 | 1 | Cap Screw |
| 26 | BH-9420-10 | 412XH-008 | 4 | Arm Stop Pin for Sleeve black |
| | BH-9420-10B | | 4 | Arm Stop Pin for Sleeve silver |
| 27 | BH-EL-67 | C-43860 | 1 | Non-Rotator |
| | BH-TR-67 | C-43860 | 1 | Top Release Non-Rotator |



BH-9420-26
Slip-On Adjustable
Height Extension (SOGPA)
Order Rubber Pad: BH-7225-01
or Rubber Pad Kit: BH-7225-01-4



BH-9420-29
Rubber Pad Adapter
SVI Exclusive



Air/Oil Tanks for Full Hydraulic Lifts
BH-9801-C Bottom Outlet
Add "FG" for Fiberglass Coating

All names, numbers, symbols and descriptions are used for reference purposes only. It is not implied that any part listed is the product of these manufacturers; however, some parts may be the actual product of these manufacturers.

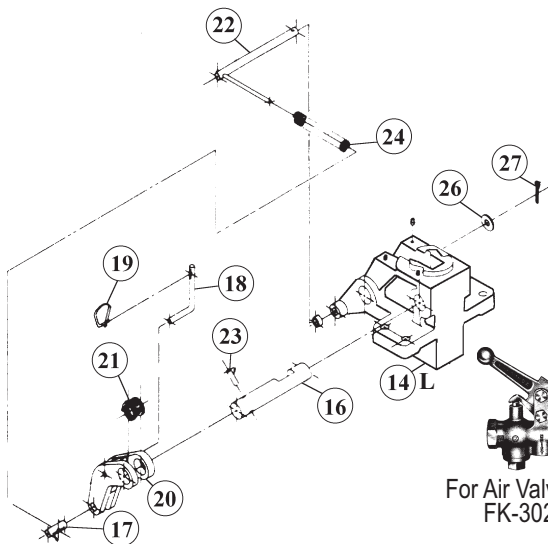
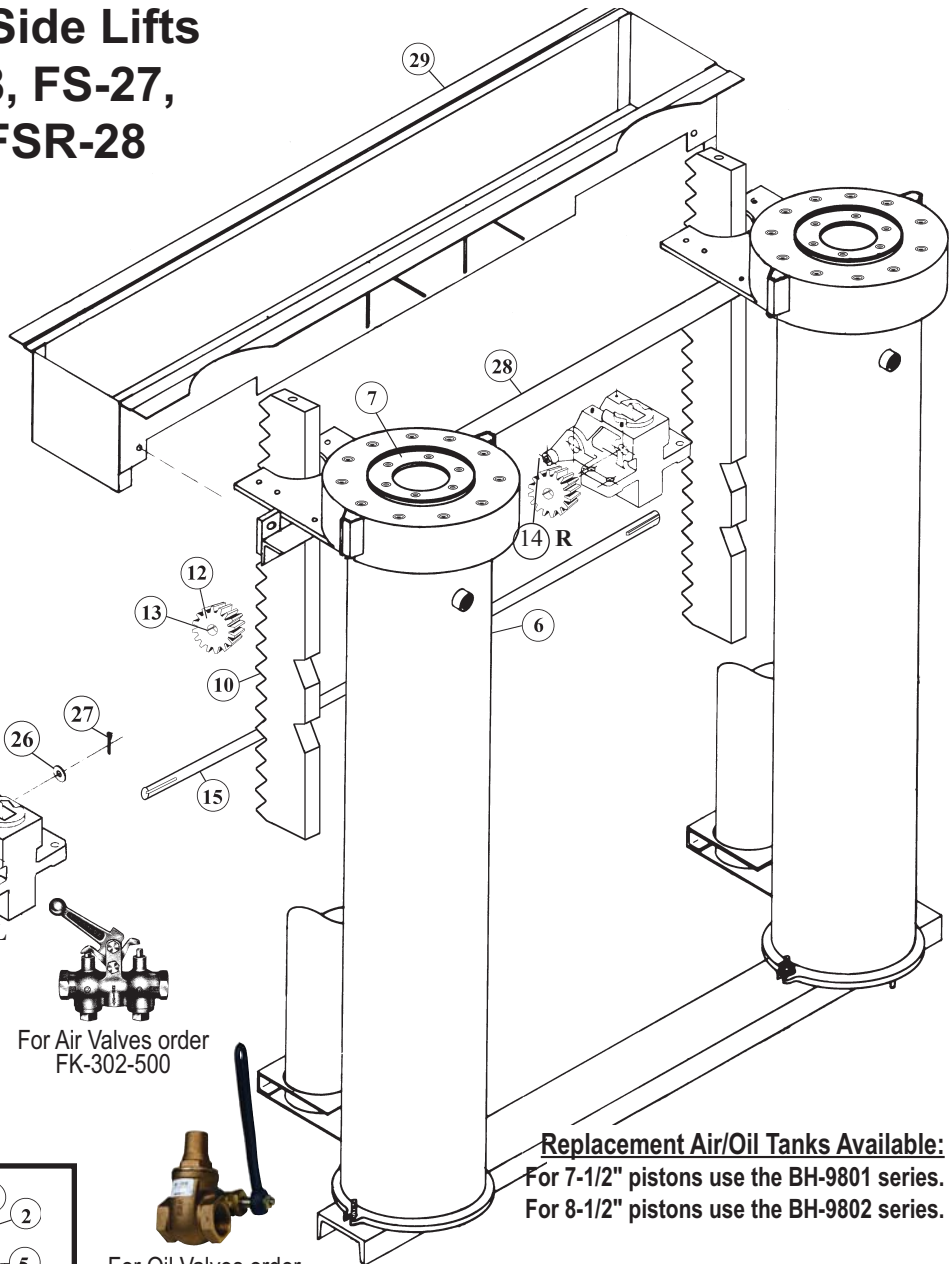


Two Post Side by Side Lifts Models F-27, F-28, FS-27, FS-28, FSN-28, FSR-28

Note: Equalizer Assemblies and parts available for both Auto Lock and Manual Lock Styles (Auto Lock Pictured.)

Note: Equalizer Assembly brackets for Ford Smith are different than those used on Globe please call for details.

Note: Only the 42" shaft is available - no other parts.

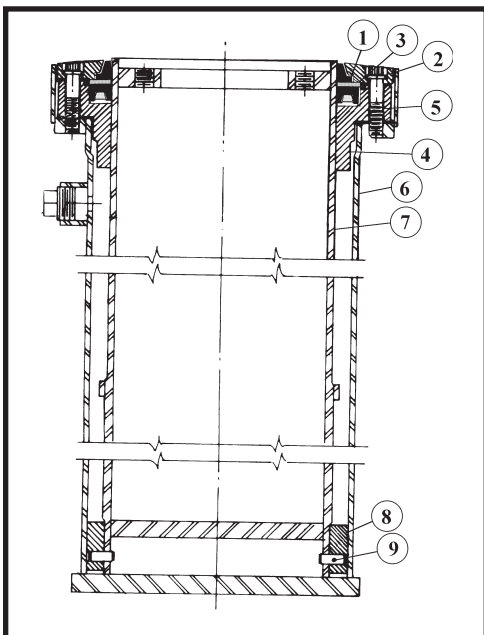


For Air Valves order
FK-302-500



For Oil Valves order
FK-438, FK-848, or
FK-902

Replacement Air/Oil Tanks Available:
For 7-1/2" pistons use the BH-9801 series.
For 8-1/2" pistons use the BH-9802 series.



| Item No. | SVI Part No. | O.E.M. Part No. | Qty Req | Description |
|----------|-------------------|-----------------|---------|---------------------------------|
| 1 | BH-1782XU | UW-81 | 1 | Lift Packing Kit * |
| | BH-1782SP | UW-81 | 1 | Spring Style Lift Packing Kit * |
| 2 | BH-9412-90 | B-37440 | 1 | Wiper Seal Cover (Gland) |
| 3 | BH-9412-91 | B-37447 | 1 | Holder Ring |
| 4 | BH-9412-92 | B-37441 | 1 | Upper Guide Bearing |
| 5 | F-SC-0625-11-2750 | 438XG22 | 12 | Capscrew |

* Lift Packing Kits contain seal, wiper, spring (SP kits only), plus all necessary gaskets. Please see pages 2 - 6 for identification information.

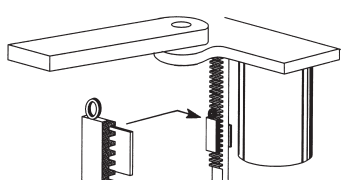
Two Post Side by Side Lifts

Models F-27, F-28, FS-27, FS-28, FSN-28, FSR-28

| Item | SVI # | OEM # | Req. | Descriptions |
|------|--|-------------|------|-------------------------------------|
| 6 | BH-9412-93 | B-42976 | 2 | Casing Assembly |
| 7 | BH-9412-94 | B-37442-13 | 2 | Plunger Assembly |
| 8 | BH-9412-95 | B-41584 | 2 | Lower Guide Bearing |
| 9 | BH-9420-03 | 359xM1250 | 2 | Spring Pin |
| 10 | BH-9409 | B42850-1 | 2 | Auto-Lock Rack Bar |
| | BH-9410 ++ | B-39818 | 2 | Manual Lock Rack Bar |
| 12 | BH-9411 | B-39999 | 2 | Pinion Gear |
| 13 | BH-9411-01 | B-39089 | 2 | Key 3/8" x 1" |
| 14L | BH-9413-01L | C-42854 | 1 | Left Hand Auto-Lock Housing |
| 14R | BH-9413-01R | C-42840 | 1 | Right Hand Auto-Lock Housing |
| --- | BH-9413-01K | | | Repair Kit for Auto Lock Eq. |
| 14 | BH-9412-01 ** | C-41384 | 2 | Manual Lock Cast Iron Housing |
| 15 | BH-9412-02 | B-33207-7 | 1 | Shaft for 26-1/2" piston centers |
| | BH-9412-02L | | 1 | Auto Lock Shaft 26-1/2" centers |
| | BH-9412-03 | B-33207-1 | 1 | Shaft for 29-1/2" piston centers |
| | BH-9412-03L | B-42851-4 | 1 | Auto Lock Shaft 29-1/2" centers |
| | BH-9412-04 | B-33207-4 | 1 | Shaft for 36" piston centers |
| | BH-9412-04L | B-432851 | 1 | Auto Lock shaft for 36" centers |
| | BH-9412-05 | B-33207-2 | 1 | Shaft for 39" piston centers |
| | BH-9412-05L | | 1 | Auto Lock shaft for 39" centers |
| | BH-9412-06 | B-33207-3 | 1 | Shaft for 42" piston centers |
| | BH-9412-06L | | 1 | Auto Lock shaft for 42" centers |
| | BH-9412-07 | B-33207-5 | 1 | Shaft for 46" piston centers |
| | BH-9412-07L | | 1 | Auto Lock shaft for 46" centers |
| | BH-9412-08 | | 1 | Shaft for 57-1/2" piston centers |
| | BH-9412-08L | B-42851-2 | 1 | Auto Lock shaft 57-1/2" centers |
| | BH-9412-09 | B33207-6 | 1 | Shaft for 83-1/2" piston centers |
| | BH-9412-09L | B-42851-1 | 1 | Auto Lock shaft - 83-1/2" centers |
| | BH-9412-10 | B-42851-3 | 1 | Shaft for all 88" piston centers |
| 13- | BH-9412-26 to | | | Manual Lock Equalizer Ass'y. |
| 15 | BH-9412-88 | | | Does not include rack and gears |
| 10- | BH-9412-26C to | S-001743 to | | Complete manual lock Equalizer |
| 15 | BH-9412-88C | S-003560 | | Assy. includes racks and gears |
| 13- | BH-9412-26L to | | 1 | Auto Lock Equalizer Ass'y. |
| 15 | BH-9412-88L | | | Does not include racks and gears |
| 10- | BH-9412-26LC to | S-003769 to | 1 | Complete Auto Lock Equalizer |
| 15 | BH-9412-88LC | S-003822 | | Assy. includes racks and gears |
| 16 | BH-9413-01 | A-42838 | 2 | Auto Eq. Lock Shaft |
| 17 | BH-9413-02 | A-42845 | 2 | Auto Eq. Pin |
| 18 | BH-9413-03 | A-42843 | 2 | Auto Eq. Push Rod |
| ++ | Manual Lock Rack Bars not pictured. | | | |
| ** | Manual Lock Brackets not pictured. Use with BH-9410 rack bars which have two holes instead of two notches. | | | |

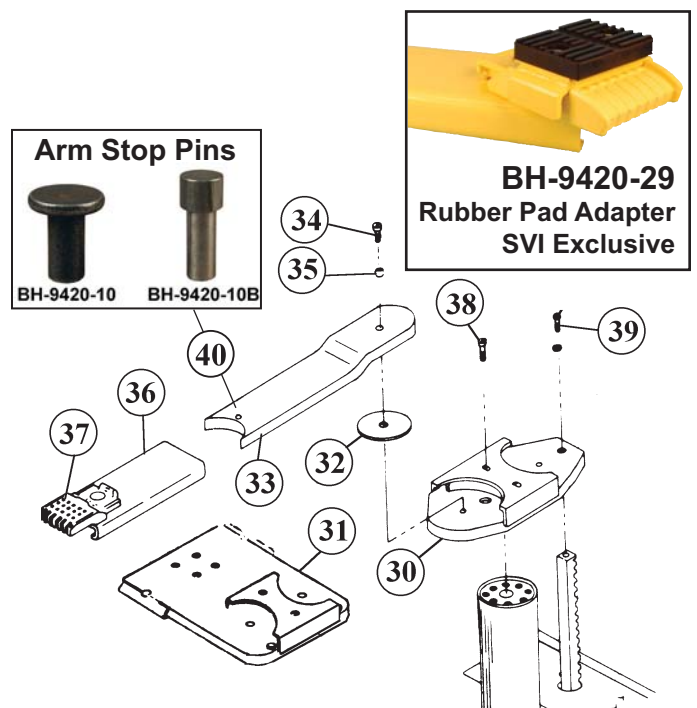
| Item | SVI # | OEM # | Req. | Descriptions |
|------|-------------------|-----------|------|--------------------------------------|
| 19 | BH-9413-04 | A-42844 | 2 | Auto Eq. Lift Ring |
| 20 | BH-9413-05 | C-42837 | 2 | Auto Eq. Lock Lever |
| 21 | BH-9413-06 | A-42847 | 2 | Auto Eq. Torsion Spring |
| 22 | BH-9413-07 | A-42839 | 2 | Auto Eq. Spring Arm |
| 23 | BH-9413-08 | 916015 | 2 | Groove Pin |
| 24 | BH-9413-09 | A-42846 | 2 | Compression Spring |
| 26 | F-FW-0375-1000 | 642X10 | 2 | Washer |
| 27 | F-CP-125-1000 | 360XC8 | 2 | Cotter Pin |
| 28 | BH-9414-29 | B-43409-4 | 1 | Spacer Angle for 29-1/2" centers |
| | BH-9414-57 | B-43409-2 | 1 | Spacer Angle for 57-1/2" centers |
| | BH-9414-88 | B-43409-3 | 1 | Spacer Angle for 88" centers |
| 29 | BH-9415-29 | B-42984-4 | 1 | Pitform & Cover 29-1/2" centers |
| | BH-9413-67 | 43412-001 | 1 | Pitform Cover 57-1/2" centers |
| | BH-9413-68 | 42983-002 | 1 | Pitform 57-1/2" centers |
| | BH-9415-90 | 43412-002 | 1 | Pitform Cover 88" centers |
| | BH-9415-89 | 42983-005 | 1 | Pitform 88" centers |
| 30 | BH-9414-01 | C-43288 | 2 | Bolster Assy (FSN-28, FS-28) |
| 31 | BH-9414-02 | C-43625 | 2 | Bolster Assy (FSR-28) |
| 32 | BH-9420-23 | B-32101-2 | 4 | Wear Washer |
| 33 | BH-9420-22 | B-42936 | 4 | Arm Assembly |
| 34 | F-TC-0625-11-1750 | 426XG-N14 | 4 | Locking Cap Screw |
| 35 | BH-9420 | A-40689 | 4 | Spacer |
| 36 | BH-9420-09 | C-34354 | 4 | Sleeve and Adapter Ass'y. |
| -- | BH-9420-29 | | | Rubber Pad Adapter |
| 37 | BH-9420-11 | C-34355 | 4 | Lifting Pad only |
| 38 | F-SC-0750-10-2000 | 438XH-16 | 8 | Socket Head Cap Screw |
| 39 | F-LC-0625-11-1750 | 426XG-N14 | 6 | Locking Cap Screw |
| 40 | BH-9420-10 | 412XH-008 | 4 | Arm Stop Pin for Sleeve black |
| | BH-9420-10B | | 4 | Arm Stop Pin for Sleeve silver |
| --- | BH-9470-68 | | | Arm Rest. for 89" Plunger Centers |

Manual Style Rack Bar Locks



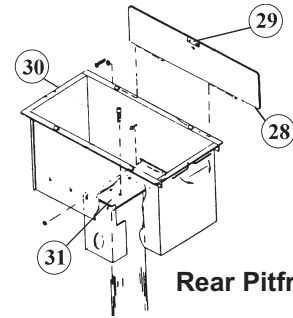
Order: BH-9410ML
Fits Rack Bars:
 BH-9409 & BH-9410
For All Globe Side-by-Side Lifts

All names, numbers, symbols and descriptions are used for reference purposes only. It is not implied that any part listed is the product of these manufacturers; however, some parts may be the actual product of these manufacturers.

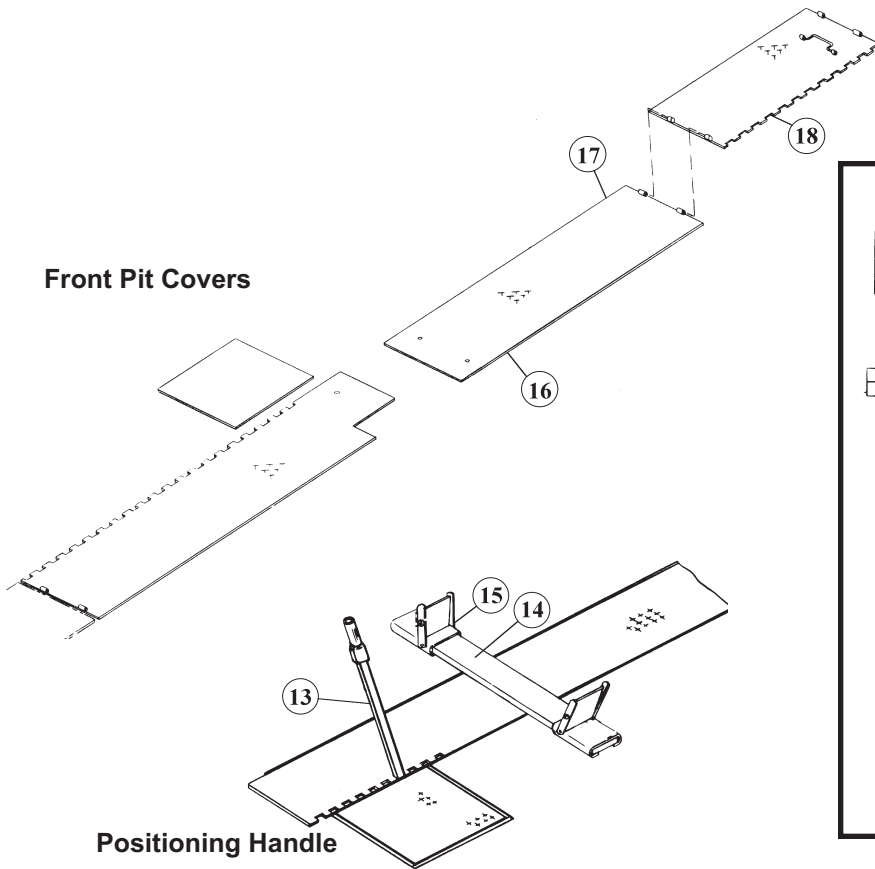




**Twin Post Fore and Aft Lifts
with 8-1/2" Front Moveable Piston
and 8-1/2" or 10-5/8" Rear Piston
Models: MP-28A & E, MP-810A & E**

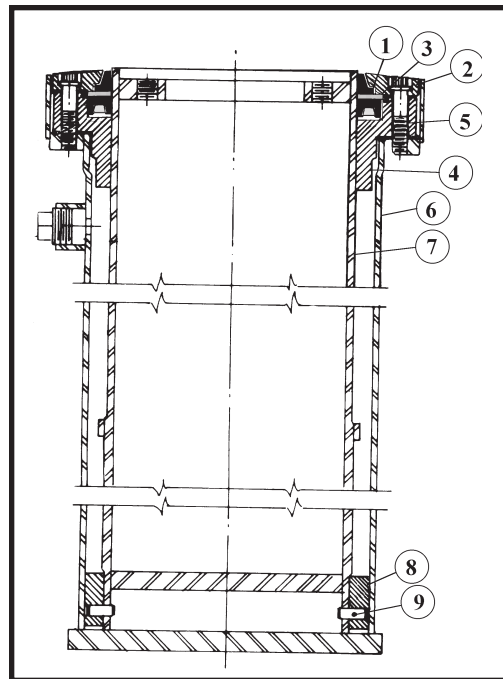


Rear Pitframe

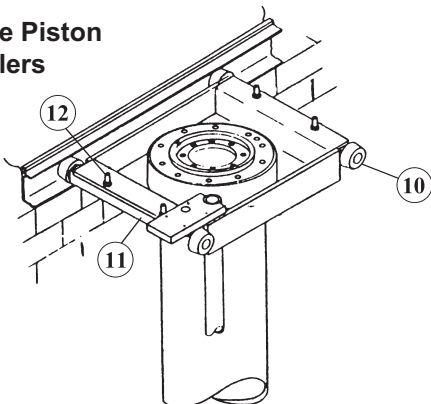


Front Pit Covers

Positioning Handle



Moveable Piston
Axle Rollers



| Item | SVI # | OEM # | Req. | Description |
|------|-------------------|---------|------|------------------------------|
| 1 | BH-1782XU | UW81 | 1-2 | 8-1/2" Lift Packing Kit * |
| | BH-1782SP | UW81 | 1-2 | Spring Style Lift Pkg. Kit * |
| | BH-1798XU | UW102 | 1 | 10-5/8" Lift Packing Kit * |
| | BH-1798SP | UW102 | 1 | Spring Style Lift Pkg. Kit * |
| 2 | BH-9412-90 | B-37440 | 1-2 | 8-1/2" Wiper Seal Cover |
| | BH-9420-15 | B-35054 | 1 | 10-5/8" Wiper Seal Cover |
| 3 | BH-9412-91 | B-37447 | 1-2 | 8-1/2" Holder Ring |
| | BH-9420-14 | B-35056 | 1 | 10-5/8" Holder Ring |
| 4 | BH-9412-92 | B-37441 | 1-2 | 8-1/2" Upper Guide Bearing |
| | BH-9420-16 | B-35055 | 1 | 10-5/8" Upper Guide Bearing |
| 5 | F-SC-0625-11-2750 | 438XG22 | 24 | Capscrew |

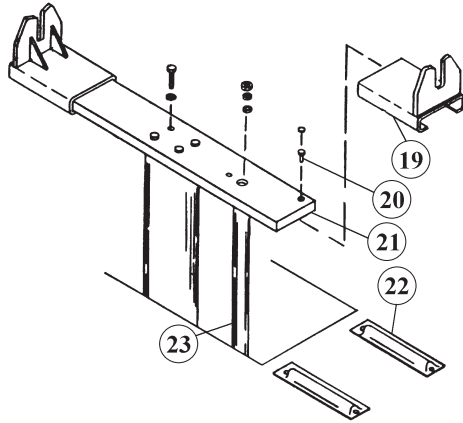
* Lift Packing kit contains seal, wiper, spring (SP kits only), plus all necessary gaskets. Please see pages 2 - 6 for identification information.

Replacement Air/Oil Tanks Available:
For 8-1/2" pistons use the BH-9802 series.
For 10-5/8" piston use the BH-9805 series.

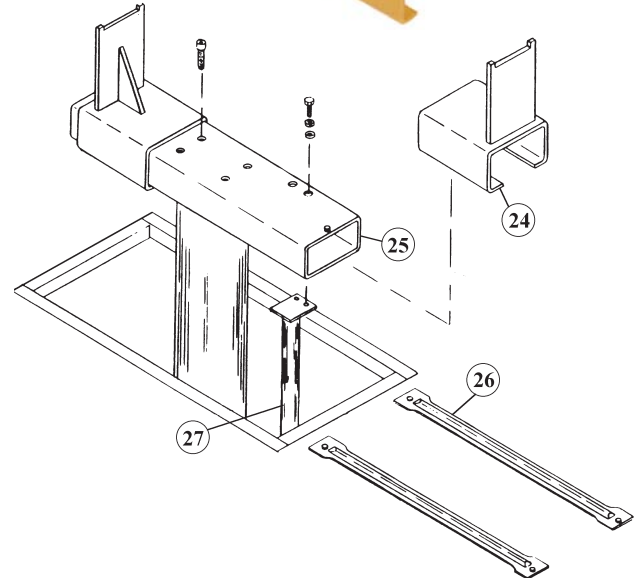
**Twin Post Fore and Aft Lifts
with 8-1/2" Front Moveable Piston
and 8-1/2" or 10-5/8" Rear Piston
Models: MP-28A & E, MP-810A & E**



Optional:
BH-9431-34
Candy Dish
Adapter
Available



Superstructure Attachment Rear MP-28



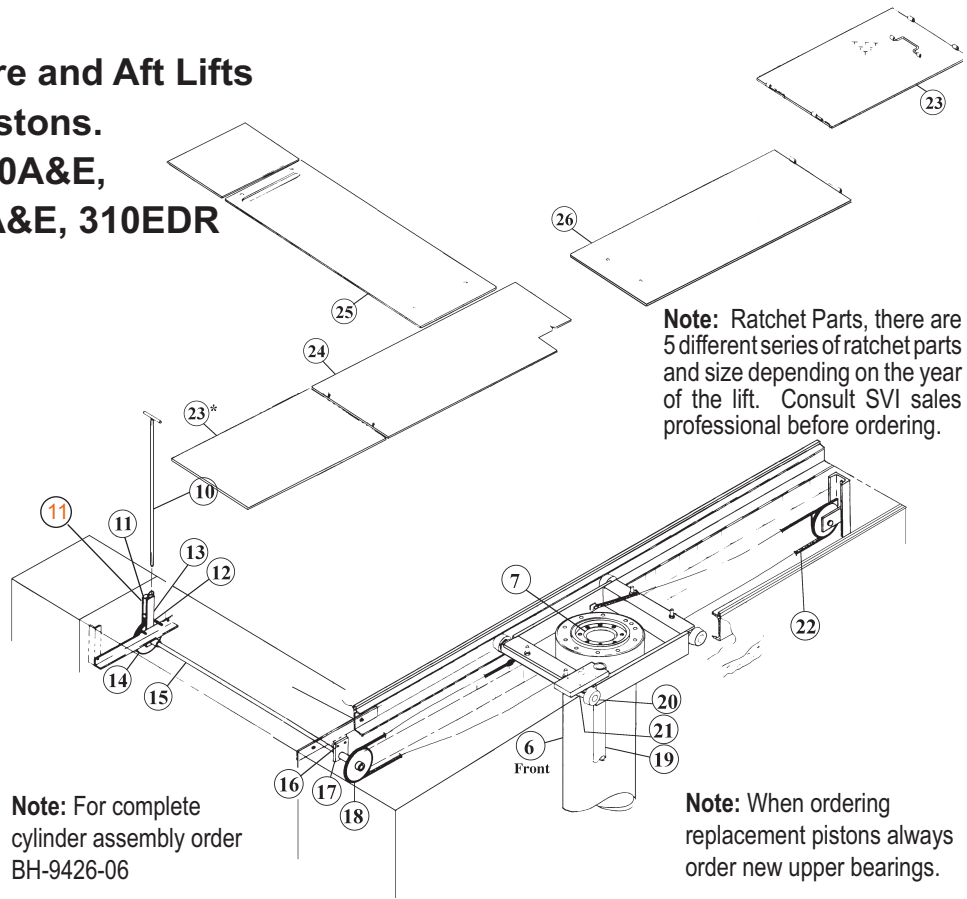
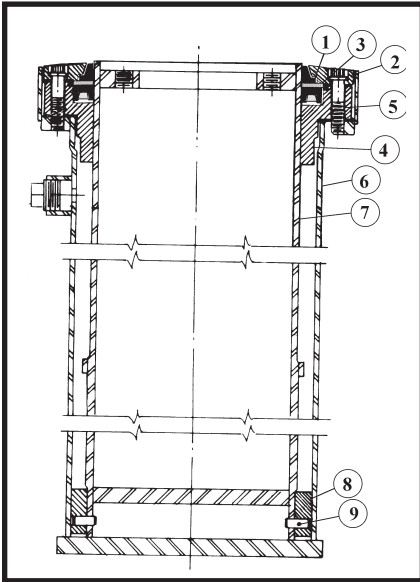
Superstructure Attachment Rear MP-810

| Item | SVI # | OEM # | Req. | Description |
|------|------------|------------|------|-------------------------------|
| 6 | BH-9431-01 | B-43744 | 1 | 8-1/2" Front Casing Ass'y |
| | BH-9431-02 | B-42577-4 | 1 | 8-1/2" Rear Casing Ass'y |
| | BH-9426-02 | B-35573-6 | 1 | 10-5/8" Rear Casing Ass'y |
| 7 | BH-9431-03 | B-37442-13 | 1 | 8-1/2" Front Plunger Ass'y |
| | BH-9431-04 | B-37442-14 | 1 | 8-1/2" Rear Plunger Ass'y |
| | BH-9426-05 | B-35570-22 | 1 | 10-5/8" Rear Plunger Assy |
| 8 | BH-9412-95 | B-41584 | 1-2 | 8-1/2" Lower Guide Bearing |
| | BH-9420-08 | B-41569 | 1 | 10-5/8" Lower Guide Bearing |
| 9 | BH-9420-03 | 359XM1250 | 2 | Spring Pin |
| 10 | BH-9425-27 | A-42587 | 4 | Axle Roller Wheel |
| 11 | BH-9425-26 | B-43535 | 2 | 17-1/4" Axle Rod |
| | BH-9425-25 | B-42588 | 2 | 19" Axle Rod |
| 12 | BH-9431-13 | A-43312 | 4 | Attaching Hardware |
| 13 | BH-9431-14 | B-42687 | 1 | Ratchet Positioning Handle |
| 14 | BH-9431-25 | B-43737 | 1 | Front/Rear Bolster |
| 15 | BH-9431-16 | C-43114 | 2 | Front Adapter |
| 16 | BH-9431-20 | B-43730 | 1 | Sliding Cover Plate (Notched) |
| 17 | BH-9431-21 | B-43731 | 1 | Sliding Cover Plate (rear) |
| 18 | BH-9431-22 | B-43733 | 1 | Detachable Cover Plate |

| Item | SVI # | OEM # | Req. | Description |
|------|------------|-----------|------|---------------------------------|
| 19 | BH-9431-23 | B-43199 | 2 | Rear Adapter (8-1/2" piston) |
| 20 | BH-9431-24 | 413XH008 | 2 | Stop Pin |
| 21 | BH-9431-25 | B-43737 | 1 | Rear Bolster (8-1/2" piston) |
| 22 | BH-9431-26 | B-43182 | 2 | Wheel Stop (8-1/2" piston) |
| 23 | BH-9431-27 | C-43860-1 | 1 | Auto Lock Plunger (rear) |
| | BH-9431-28 | C-43860 | 1 | Auto Lock Plunger (front) |
| 24 | BH-9428-04 | B-43580 | 2 | Rear Adapter (10-5/8" piston) |
| 25 | BH-9428-03 | B-43686 | 1 | Rear Saddle (10-5/8" piston) |
| 26 | BH-9428-05 | B-43182-1 | 1 | Wheel Stop (10-5/8" piston) |
| 27 | BH-GL-70P | B-43720-1 | 1 | Auto Lock Plunger (10-5/8") |
| | BH-9428-16 | B-43648 | 1 | Auto Lock Casing (10-5/8") |
| 28 | BH-9431-30 | B-43739 | 2 | 8-1/2" Cover Door (please call) |
| | BH-9427-18 | B-43617 | 2 | 10-5/8" Cover (please call) |
| 29 | BH-9427-14 | A-33114-1 | 2 | Striker Block |
| 30 | BH-9431-31 | C-43740 | 1 | 8-1/2" Pitframe Assy. (28-31) |
| | BH-9427-19 | C-43620-1 | 1 | 10-5/8" Pitframe Assy. |
| 31 | BH-9431-32 | B-43373 | 1 | 8-1/2" Bottom Sheet |
| | BH-9427-17 | B-43244 | 1 | 10-5/8" Bottom Sheet |



**Twin and Multi Post Fore and Aft Lifts
with 10-5/8" Pistons.
Models: MP-210A&E,
SHMP-210A&E, -310A&E, 310EDR**



Note: Ratchet Parts, there are 5 different series of ratchet parts and size depending on the year of the lift. Consult SVI sales professional before ordering.

Note: For complete cylinder assembly order BH-9426-06

Note: When ordering replacement pistons always order new upper bearings.

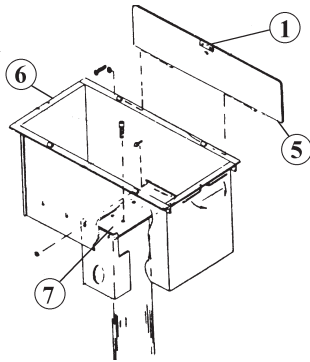
| Item | SVI # | OEM # | Req | Description |
|------|-------------------|------------|-----|---------------------------------|
| 1 | BH-1798XU | UW102 | 2 | Lift Packing Kit * |
| | BH-1798SP | UW102 | 2 | Spring Style Lift Packing Kit * |
| 2 | BH-9420-15 | B-35054 | 2 | Wiper Seal Cover (Gland) |
| 3 | BH-9420-23 | B-35056 | 2 | Holder Ring |
| 4 | BH-9420-16 | B-35055 | 2 | Upper Guide Bearing |
| 5 | F-SC-0625-11-2750 | 438XG22 | 12 | Capscrew |
| 6 | BH-9426-01 | B-43707 | 1 | Front Casing Assembly |
| | BH-9426-02 | B-35573-6 | 1 | Rear Casing Assembly |
| 7 | BH-9426-03 | B-35570-14 | 1 | Front Piston |
| | BH-9426-03 | B-35570-14 | 1 | Rear Piston SHMP-210,310 |
| | BH-9426-05 | B-35570-22 | 1 | Rear Piston (All others) |
| 8 | BH-9420-08 | B-41569 | 2 | Lower Guide Bearing |
| 9 | BH-9420-03 | 359XM1250 | 2 | Spring Pin |
| 10 | BH-9425-10 | A-43359 | 1 | Ratchet Handle see note |
| 11 | BH-9425-01 | | 1 | Ratchet Lever see note |
| 12 | BH-9425-02 | | 1 | Ratchet Dog see note |

* Lift Packing kit contains seal, wiper, spring (SP kits only), plus all necessary gaskets. Please see pages 2 - 6 for identification information.

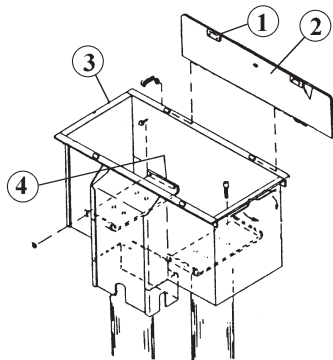
| Item | SVI # | OEM # | Req | Description |
|--------------|----------------|----------------|----------|-------------------------------------|
| 13 | BH-9425-03 | | 1 | Ratchet Dog Shaft see note |
| 14 | BH-9425-04 | | 1 | Ratchet Wheel see note |
| 15 | BH-9425-05 | | 1 | Ratchet Shaft (48") see note |
| 16 | BH-9425-06 | | 1 | Ratchet Hanger see note |
| 17 | BH-9425-07 | | 1 | Ratchet Hanger see note |
| 18 | BH-9425-08 | B-43622 | 2 | Ratchet Sprocket see note |
| 11-18 | BH-9425 | C-43660 | 1 | Ratchet Rebuild Kit see note |
| 19 | BH-GL-60 | C-43720 | 1 | Front Safety Leg |
| | BH-GL-70 | C-43720-1 | 1 | Rear Safety Leg |
| 20-21 | BH-9427 | | 2 | Axle Assembly |
| 20 | BH-9427-01 | B-42750 | 4 | Roller Wheel Assembly |
| 21 | BH-9427-02 | A-42749 | 2 | Roller Wheel Axle |
| 22 | BH-9425-09 | A-43591 | 1 | 1" Pitch Roller Chain 12' pit |
| 23 | BH-9427-10 | B-43611 | 1 | Detachable Cover (* Optional) |
| 24 | BH-9427-11 | B-43609 | 1 | Sliding Cover (notched) |
| 25 | BH-9427-12 | B-43653 | 1 | Ratchet Pit Cover |
| 26 | BH-9427-13 | B-43609-1 | 1 | Sliding Cover\ |

Additional:

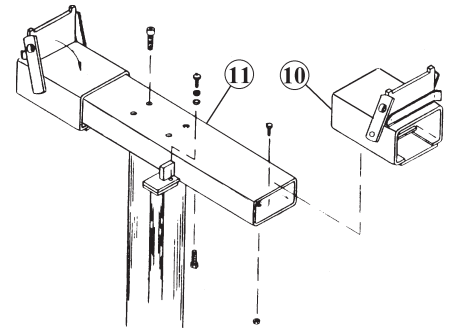
| | | | | |
|----|------------|--|--|------------------------|
| -- | BH-9432-01 | | | Air Cylinder for Latch |
|----|------------|--|--|------------------------|



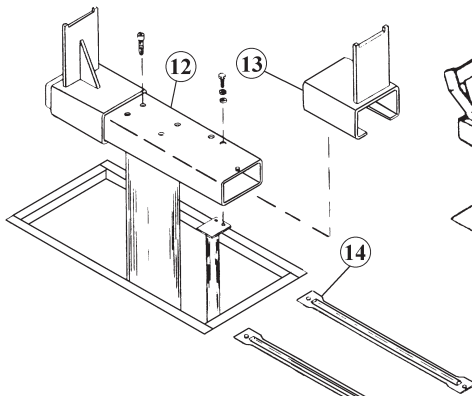
MP-210 Rear Pitframe



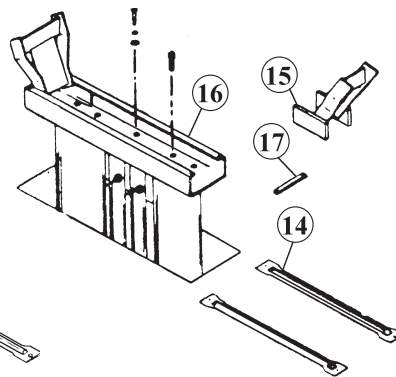
MP-310EDR Rear Pitframe



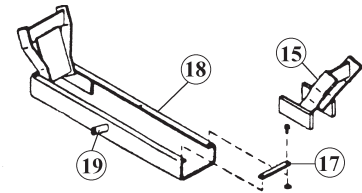
**Superstructure
for 10-5/8" Front Piston**



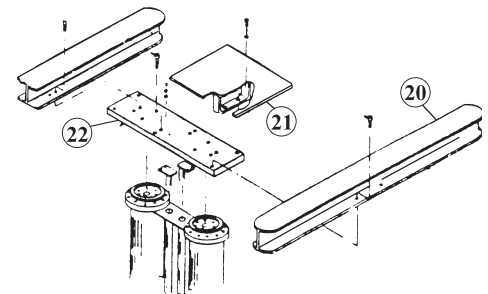
**MP-210A & E Rear
Superstructure Attachment**



**MP-310EDR Rear Superstructure
Attachment**



**SHMP-210A & E, SHMP-310E Rear
Superstructure Attachment**

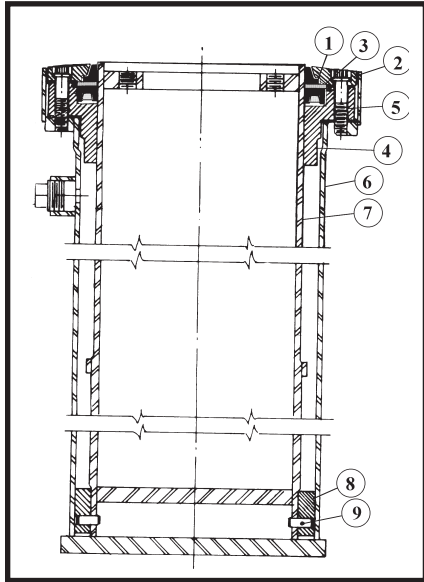


| Item | SVI # | OEM # | Req | Description |
|------|-------------|-----------|-----|-------------------------------|
| 1 | BH-9427-14 | A-33114-1 | 2 | Striker Block |
| 2 | BH-9427-15 | B-43617-1 | 1 | Cover Only - Call for details |
| 3 | BH-9427-16 | C-43620-1 | 1 | Pitframe Assy (Incl. 1-4) |
| 4 | BH-9427-17 | B-43244 | 1 | Bottom Sheet-Call for details |
| 5 | BH-9427-18 | B-43617 | 1 | Cover Only-Call for details |
| 6 | BH-9427-19 | C-43620 | 1 | Pitframe Assy (Incl. 1,5-7) |
| 7 | BH-9427-17 | B-43244 | 1 | Bottom Sheet-Call for details |
| 10 | BH-9428-01 | B-43615 | 2 | Adapter 4" Inside Height |
| | BH-9428-01A | B-43978 | 2 | Adapter 3" Inside Height |
| 11 | BH-9428-02 | B-43685 | 1 | Saddle 4" Tall |
| | BH-9428-02A | C-43979 | 1 | Saddle 3" Tall |
| 12 | BH-9428-03 | B-43686 | 1 | Saddle |

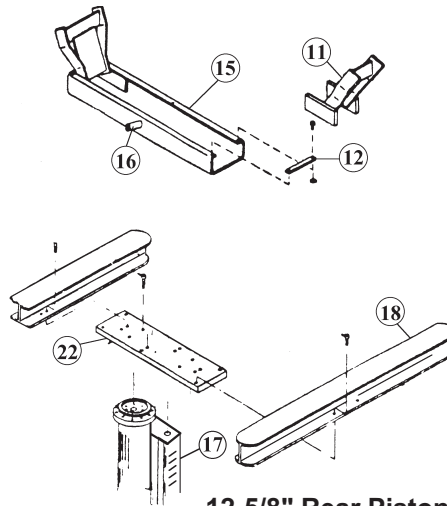
| Item | SVI # | OEM # | Req | Description |
|------|------------|-----------|-----|------------------------------|
| 13 | BH-9428-04 | B-43580 | 1 | Adapter |
| 14 | BH-9428-05 | B-43182-1 | 2 | Wheel Stop |
| 15 | BH-9428-06 | B-43383 | 2 | Adapter Assembly |
| 16 | BH-9428-07 | B-43714 | 1 | Saddle |
| 17 | BH-9428-08 | A-43384 | 2 | Adapter Stops |
| 18 | BH-9428-09 | B-43381 | 1 | Rolling Saddle |
| 19 | BH-9428-10 | A-43359 | 1 | Ratchet Handle |
| 20 | BH-9428-11 | B-42925 | 2 | Rails |
| 21 | BH-9428-12 | B-42923 | 1 | Cover Assembly |
| 22 | BH-9428-13 | C-43717 | 1 | Bolster Plate (single cyl.) |
| | BH-9428-14 | C-43716 | 1 | Bolster Plate (tandem cyls.) |



12-5/8" Fixed Piston for Truck and Bus Lifts
Model Numbers: SHRS-212E, D-SH-12E,
MP-10-12-10E, MP-1012E, and SHMP-1012E



12-5/8" Rear Piston Superstructure Attachment



12-5/8" Rear Piston Superstructure Attachment (Rail Type)

17
BH-9430-12
Auto Lock Leg



| Item | SVI # | OEM # | Req. | Description |
|------|-------------------|-----------|------|---------------------------------|
| 1 | BH-1709X | UW121 | 2 | Lift Packing Kit * |
| | BH-1709SP | UW121 | 2 | Spring Style Lift Packing Kit * |
| 2 | BH-9430-01 | B-43838-1 | 2 | Wiper Seal Cover (Gland) |
| 3 | BH-9430-02 | B-43838-2 | 2 | Holder Ring |
| 4 | BH-9430-03 | B-43838-3 | 2 | Upper Guide Bearing |
| 5 | F-SC-0625-11-2750 | 438XG22 | 12 | Capscrew |
| 6 | BH-9430-08 | B-43838-8 | 1 | Casing Ass'y (60" Stroke) |
| | BH-9430-09 | B-43838-9 | 1 | Casing Ass'y (70" Stroke) |
| 7 | BH-9430-06 | B-43838-6 | 1 | Piston Ass'y (60" Stroke) |
| | BH-9430-07 | B-43838-7 | 1 | Piston Ass'y (70" Stroke) |
| 8 | BH-9430-04 | B-43838-4 | 2 | Lower Guide Bearing |
| 9 | BH-9420-03 | 359XM1250 | 2 | Spring Pin |

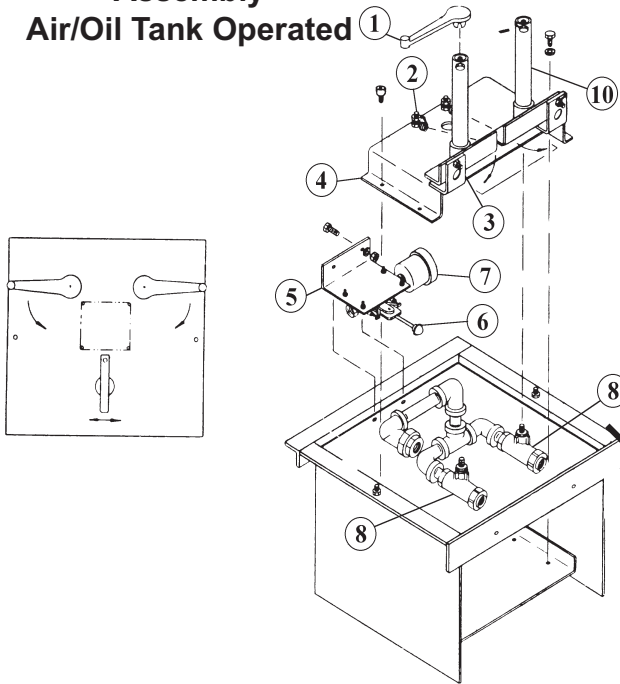
| Item | SVI # | OEM # | Req. | Description |
|------|-------------------|------------|------|-------------------|
| 10 | BH-9430-10 | B-43378-1 | 1 | Saddle |
| 11 | BH-9428-06 | B-43383 | 2 | Adapter Assembly |
| 12 | BH-9428-08 | A-43384 | 2 | Adapter Stop |
| 13 | BH-9428-05 | B-43182-1 | 2 | Wheel Stop |
| 14 | BH-9430-11 | B-43831-70 | 1 | Auto Lock Plunger |
| 15 | BH-9428-09 | B-43381 | 1 | Rolling Saddle |
| 16 | BH-9428-10 | A-43359 | 1 | Ratchet Handle |
| 17 | BH-9430-12 | B-43831-60 | 1 | Auto Lock Plunger |
| | BH-9430-13 | B-43829 | 1 | Auto Lock Casing |
| 18 | BH-9428-11 | B-42925 | 2 | Rails |

For Pitframes, and cover plate information please see the MP-210 parts listing.

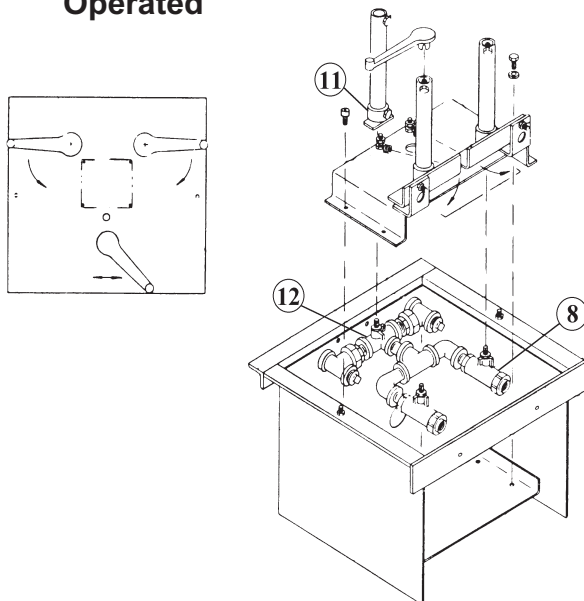
* Lift Packing kit contains seal, wiper, spring (SP kits only), plus all necessary gaskets. Please see pages 2- 6 for identification information.

Control Valves for Fore and Aft Lifts

Control Valve Manifold Assembly Air/Oil Tank Operated

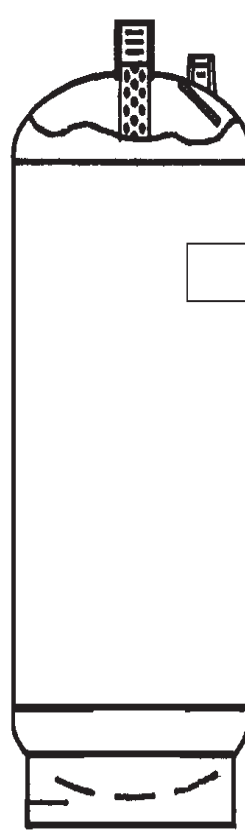


Control Valve Manifold Assembly Electric Pump Operated



| Item | SVI # | OEM# | Req. | Description |
|------|------------|----------|------|---------------------------|
| 1 | BH-9440-01 | B-41053 | 2 | Valve Handle |
| 2 | BH-9440-02 | 916984 | 2 | Return Spring |
| 3 | BH-9440-03 | A-43813 | 2 | Oil Valve Handle Ass'y. |
| 4 | BH-9440-04 | B-43680t | 1 | Valve Retainer Ass'y. |
| 5 | BH-9440-05 | A-43763 | 1 | Air Valve Ass'y. |
| 6 | BH-9750L | 571X4L | 1 | Air Valve |
| 7 | BH-9640 | A-30080 | 1 | Muffler |
| 8 | BH-9440-08 | 601 X 8 | 2 | 1"Ball Valve |
| 10 | BH-9440-06 | A-43812 | 2 | Valve Extension |
| 11 | BH-9440-09 | A-43814 | 1 | 3 Way Valve Handle Ass'y. |
| 12 | BH-9440-10 | 605 X 8 | 1 | 3 Way Ball Valve |

Air/Oil Tanks for Full Hydraulic Lifts



BH-9801-C For all Single Post or Twin 7-1/2" Posts

BH-9802-C For all Twin Post lifts with 8-1/2" Posts

BH-9804-C For Lifts with one 7-1/2" and one 10-5/8" post.

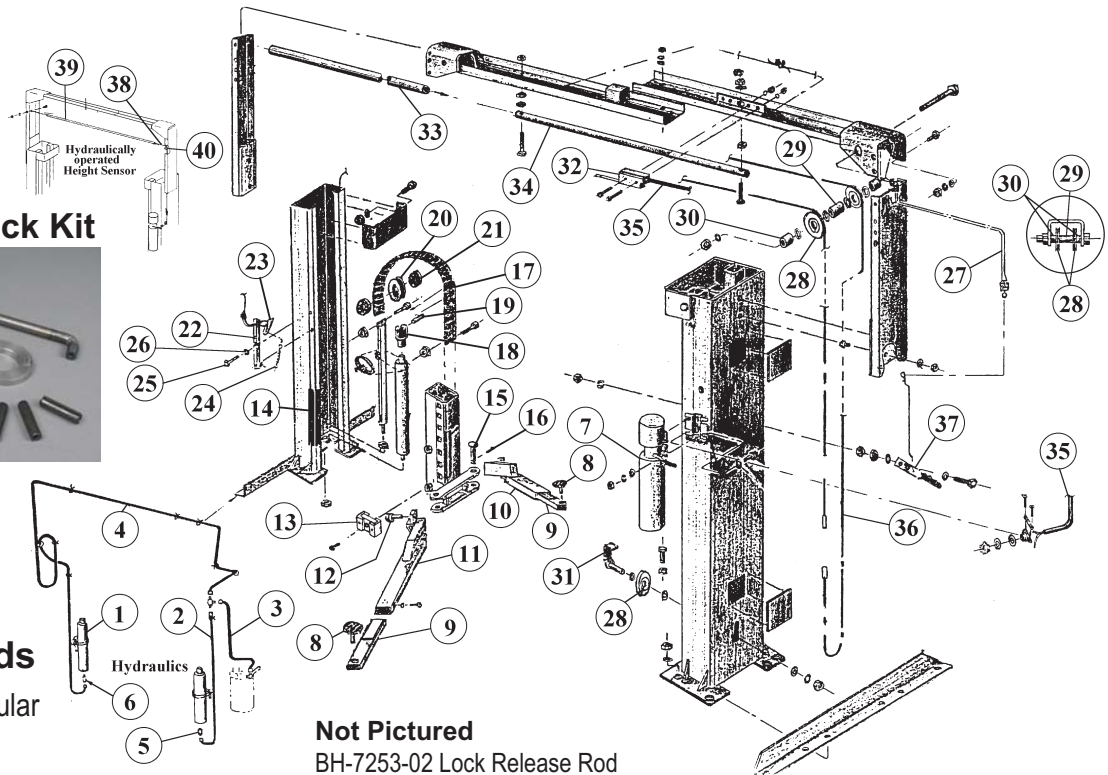
Fiberglass Coating is also available. Add an FG to the end of the tank part number to specify a fiberglass coated tank.

BH-9810 Low Oil Control Float
BH-9810-01 Hook for BH-9810

C=Complete with low oil control float, hook and fill plug/gauge.



Two Post Surface-Mount Lifts
For Models AFO7, AFO7A and EH, AFO9, AFO9A and EH



BH-7251-46 Arm Lock Kit



Rubber Arm Pads

- BH-7250-01** Rectangular
- BH-7250-02** Round
- BH-7250-03P** Square

Not Pictured

- BH-7253-02 Lock Release Rod
- BH-7253-01 Lock Release Pulley

| Item | SVI # | OEM # | Req. | Description |
|----------|-------------------|--------------|----------|-----------------------------------|
| 1 | BH-7250-37 | FS-202797 | 2 | Hydraulic Cylinder (AFO-7) |
| | BH-7250-39 | FS-202872 | 2 | Hydraulic Cylinder (AFO-9) |
| 2 | BH-7250-43 | FS-13347 | 1 | Cylinder Hose 1/4" x 112" |
| 3 | BH-7250-44 | FS-13455 | 1 | Pick Up Hose 3/8" x 62" |
| 4 | BH-7250-45 | FS-13348 | 1 | Crossbeam Hose for 12' High |
| | BH-7250-46 | FS-13349 | 1 | Crossbeam Hose for 13'6" High |
| 5 | BH-7250-47 | FS-203973 | 1 | Restrictor |
| 6 | BH-7250-48 | FS-13276 | 1 | Adapter |
| 7 | BH-7006-01 | | 1 | Power Unit |
| 8 | BH-7250-03 | FS-203556 | 1 | Screw Adapter |
| 9 | BH-7250-20R or L | | 4 | Inner Arm (specify Left or Right) |
| 10 | BH-7250-21R or L | | 1 | Short Front Outer Arm L or R |
| 11 | BH-7250-22R or L | | 1 | Long Rear Outer Arm L or R |
| 12 | BH-7251-23 | FS-202979 | 4 | Arm Lock Screw |
| 13 | BH-7250-25 | FS-204786 | 8 | Bearing Assembly |
| 13A | BH-7251-30 | FS-202749 | 8 | Bearing Shoes (Specify Size) |
| 14 | BH-7251-13 | FS-202775-18 | 2 | Bumper Strip |
| 15 | BH-7251-08 | FS-202626 | 4 | Arm Pin |
| 16 | BH-7250-28 | FS-11691 | 4 | Spring Pin |
| 17 | BH-7030 | FS-13167 | ? | Leaf Chain |
| 18 | BH-7251-18 | FS-202884 | 2 | Clevis (yoke) |
| 19 | BH-7251-10 | FS-202637 | 2 | Clevis Shaft |

| Item | SVI # | OEM # | Req. | Description |
|-----------|-------------------|------------------|----------|------------------------------|
| 20 | BH-7251-14 | FS-202798 | 2 | Pulley & Shaft old style |
| 21 | BH-7250-51 | FS-12074 | 6 | Bearing |
| 22 | BH-7250-52 | FS-203980 | 2 | Latch Housing |
| 23 | BH-7250-53 | FS-203314 | 2 | Latch |
| 24 | BH-7250-54 | FS-13329 | 2 | Spring |
| 25 | F-HC-0625-11-1000 | FS-13271 | 2 | Hex Bolt |
| 26 | F-LW-0625 | FS-10681 | 2 | Lock Washer |
| 27 | BH-7250-55 | FS-13106-240 | 2 | Lock Release Cable |
| 28 | BH-7250-56 | FS-203199 | 2 | Sheave |
| | BH-7250-57 | FS-12545 | 6 | Sheave Bushing |
| 29 | BH-7250-58 | FS-30474-3-1/4 | 2 | Long Spacer |
| 30 | BH-7250-59 | FS-30474-3/4 | 4 | Short Spacer |
| 31 | BH-7250-60 | FS-203355 | 2 | Wire Rope Adjuster |
| 32 | BH-7250-61 | FS-13280 | 1 | Limit Switch |
| 33 | BH-7250-62 | FS-13293-60 | 1 | Hose |
| 34 | BH-7250-63 | FS-203647 | 1 | Sensor Bar |
| 35 | BH-7250-64 | FS-13290-160 | 1 | Elect. Cable |
| 36 | BH-7250-13 | FS-13109 | 2 | Equalizer Cable (12' High) |
| | BH-7250-14 | FS-13196 | 2 | Equalizer Cable (13'6" High) |
| 37 | BH-7250-67 | FS-202946 | 1 | Release Handle |
| 38 | BH-7250-68 | FS-13106-276 | 1 | Cable 23' x 3/32" |
| 39 | BH-7250-69 | FS-13270-72 | 1 | Hose |
| 40 | BH-7251-19 | FS-202885 | 2 | Guide Pulley Assembly |

**TERMS AND CONDITIONS OF THE
SALES ORDER
FOR SVI INTERNATIONAL, INC.**

1. **GENERAL.** The terms and conditions of sales order outlined herein shall apply to the sale by SVI INTERNATIONAL, INC. (hereinafter referred to as "Company") of the items described on the facing page (hereinafter referred to as "Merchandise") to Purchaser.
2. **DELIVERY.** Delivery shall be deemed to be complete when the Merchandise has been shipped F.O.B. Company's plants in DeKalb, Illinois, Duarte, California; and Baltimore, Maryland ("Company's plants"). Shipments are subject to delays from causes or contingencies beyond the reasonable control of the Company. When otherwise not specified, shipments will be made in standard containers via carrier which, in the judgment of the Company, will result in the most practical method. Title and right of possession will pass to the Purchaser upon receipt by the carrier at the shipping point. If a customer of the Company should specify a specific carrier's method of shipment (i.e. UPS Next Day Air) and that carrier does not perform to the customer's expectations, freight credit to a customer's account will not be issued unless the Company can first obtain a credit.
3. **RISK OF LOSS.** Identification of the Merchandise under Uniform Commercial Code (hereinafter referred to as "UCC") Section 2-501 shall take place at the moment of shipment F.O.B. Company's plants. Risk of loss shall pass to the Purchaser when the Merchandise is shipped from the Company's plants.
4. **TITLE.** Title to the merchandise shall transfer to the Purchaser when the Merchandise is shipped from the Company's plants.
5. **WARRANTIES.** The Company guarantees its products to be free from defects in workmanship and raw materials for a period of one year from date of purchase. THIS WARRANTY IS EXPRESSLY IN LIEU OF ANY AND ALL WARRANTIES EXPRESS OR IMPLIED. COMPANY DOES NOT WARRANT THE MERCHANDISE IS MERCHANTABILITY OR FIT FOR ANY PARTICULAR PURPOSE. Company's liability for breach of the terms of this Agreement, including any warranty, is limited to either refund of the invoice price of the Merchandise or at Company's option, replacement of the Merchandise free of charge, including transportation charges but not including the cost of labor. Purchaser has not relied on any statement or upon the conduct of Company with respect to the prospective use of the merchandise. Company shall not be liable for and Purchaser waives any and all claims for any loss or damage, directly or indirectly, arising from the use of the Merchandise and for punitive, incidental or consequential damages, including, but not limited to, damages to property, for loss of use, loss of time, loss of profit or loss of income. The Company does not authorize the sale of our products under any other warranty, expressed or implied.
6. **SETOFF.** All claims for money due or to become due from the Company shall be subject to deduction by the Company for any setoff or counterclaim arising out of this or any other claims of the Company or its affiliated companies, whether such setoff or counterclaim arose before or after any assignment by Purchaser.
7. **INDEMNIFICATION.** Purchaser agrees to indemnify the Company and hold it harmless from and against all claims, liability, loss, damage or expense, including reasonable counsel fees, arising from or by reason of any modifications or alterations made by Purchaser. If a customer of the Company modifies or alters any part, in any manner whatsoever, or uses any part in departure from recommended performance specifications, said customer agrees to indemnify and hold the Company harmless from and against all liability and expenses based on damage to property or injury to or death of any person arising out of or attributable to such modified or altered part. Further, the Company will not accept any such modified or altered part for credit to a customer's account.
8. **FREIGHT POLICY.** Freight charges on individual orders less than \$3,000 in net value are prepaid and added to invoice or collect F.O.B. shipping point. Freight charges (standard ground service and continental US only) on individual orders more than \$3,000 net value are paid by the Company F.O.B. shipping point. Note: customers with C.O.D. terms are responsible for all carrier C.O.D. fees regardless of order net value.
9. **RETURN POLICY.** To return parts for credit or inspection Purchaser must first contact the Company to obtain a Return Goods Authorization number (RGA#). Once Purchaser has obtained an RGA# the parts can be returned freight prepaid only. The RGA# must be on the outside of the container in a highly visible location. All parts must be returned freight prepaid and the shipment must include a letter of explanation giving the specific reason for return including details as to the conditions under which the part or parts operated. Note: parts returned without an RGA#, freight collect or without written explanation may be refused. Parts which have been used in any way or manner, including any installation or incorporation into a lift or hoist, shall NOT be eligible for return whether or not an RGA has been assigned.
10. **RESTOCK CHARGE.** Returns are subject to up to twenty-five (25%) restocking charge. Refusals are subject to the same restocking charge plus the cost of outbound and return freight charges and/or fees incurred by the Company due to shipment refusal.
11. **PRICES AND PAYMENTS.** All prices are subject to change without notice. All prices are F.O.B. shipping point. The Company standard terms are net 30 days, C.O.D. company check, C.O.D. cash, VISA, MasterCard, Discover or American Express. However, if in the judgment of the Company, the financial condition of the Purchaser at any time does not justify shipment according to standard terms of payment, the Company may require full or partial payment in advance.
12. **INTERPRETATION.** This sales order is intended by the parties as a complete and exclusive statement of the terms of their agreement. It supersedes all prior agreements, written or oral. No course of prior dealings between the parties and no usage of the trade shall be relevant to supplement or explain any terms used in this sales order. Acceptance or acquiescence in a course of performance rendered under this purchase order shall not be relevant to determine the meaning of this sales order even though the accepting or acquiescing party has knowledge of the nature of the performance and opportunity for objection. Whenever a term defined by the UCC is used in this sales order the definition contained in the UCC shall control.
13. **MODIFICATION.** This sales order can be modified or rescinded only by a writing signed by both parties.
14. **WAIVER.** No claim or right arising out of a breach of this sales order can be discharged in whole or in part by a waiver or renunciation of the claim or right unless such waiver or renunciation is supported by consideration and is in writing signed by the aggrieved party.
15. **ASSIGNMENT.** No right or interest in this sales order shall be assigned by either party without the written consent of the other and no delegation of any obligation owed, or of the performance of any obligation by either the Company or Purchaser shall be made without the written consent of the other party. Any attempted assignment or delegation not made in conformity with this paragraph shall be wholly void and totally ineffective for all purposes.
16. **TIME TO PERFORM AND BRING ACTION.** Time is of the essence of this sales order. Any action for breach of this sales order shall be commenced within two (2) years after the cause of action has accrued. Any party who loses any litigation shall reimburse the other party for costs including reasonable attorneys fees. The exclusive jurisdiction for any legal action shall be the Circuit Court of DeKalb County, Illinois.
17. **APPLICABLE LAW.** This sales order shall be governed by the UCC of Illinois as effective and in force on the date of this sales order.

Offering the Best in Automotive Lift Repair Parts and More!

Auto Lift Cables • Auto Lift Parts • Brake Lathe Repair Parts

Compressed Air Repair Parts • Exhaust System Products • Fluid Delivery Repair Parts

Lubrication Equipment Repair Parts • Repair Parts for Gasboy Consumer Series

Service Station Pump and Tank Products • SVI Misc Auto Lift Products and Catalogs

Tire Changer Repair Parts • Vehicle Lifting Systems • Wheel Balancer Accessories

Serving the Industry Since 1977 • Same-Day Shipping



SVI International, Inc.

(800) 321-8173 • fax: (800) 899-1784

155 Harvestore Drive • DeKalb, IL 60115

www.sviinternational.com

BALTIMORE • CHICAGO • LOS ANGELES

While the utmost care has been used in compiling this reference material, we assume no responsibility for errors. Specifications are subject to change without notice. This edition supersedes all previous editions or issues. SVI reference material is subject to change without notice. All rights reserved.