



**ROCHESTER
GAUGES, INC.**

ISO 9001:2008 CERTIFIED

Adjustable Liquid-Level Gauges

**6500
Series
Adj.**

Adjustable Liquid-Level Gauges

Application

The 6500 Series Senior gauges are designed for use in low pressure tanks 0-25 psig [0-1,7Bar] containing diesel fuel, gasoline, fuel oil and lubricating oils.

Used in many applications such as construction equipment, stationary generators, boats, farm equipment and home heating.

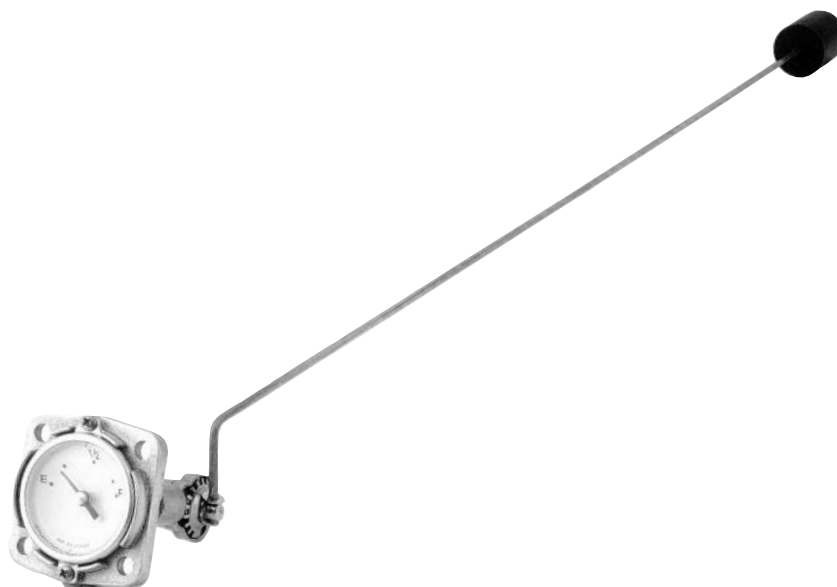
General Information & Features

The 6500 Series Adjustable Senior gauges are available in gear-action models for top mounting.

The standard float is nitrile rubber. The gauge is mounted to a mating Senior flange 2 ½" bolt circle [63,5mm] using four ¼"-28 x ⅝" long bolts. The gasket is Buna-N.

Top Mounting Adjustable Liquid-Level Gauges

Model #	Mounting	Dial or Sending Data
6580-0151	Top	5002S01379 Senior direct-reading fractional dial
6540-00090		5880S02547P (0-90 Ohms)
6540-00240		5648S02547P (240-30 Ohms)



Adjustable 6540 or 6580 Top Mount Gauge

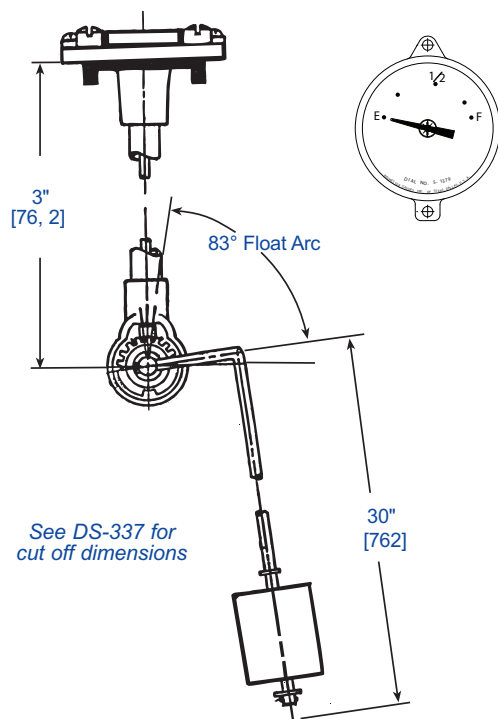
See reverse side for dimensional data, materials of construction, performance, and advice on how to order.

04/28/2015

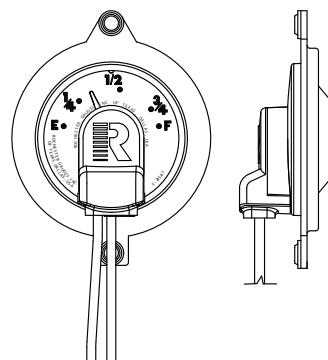
The Measure of Excellence

6500 Series Adj. Adjustable Liquid-Level Gauges

Direct reading gauge with 5002S01379 dial



TwinSite® Dial, 0-90 ohms & 240-30 ohms



Part #	Description	Ohms
5880S02547P	Wire Leads	0-90
5648S02547P	Wire Leads	240-30

General Specifications*

Accuracy

Accuracy depends upon proper gauge sizing. Senior dials $\pm 7\%$, TwinSite® dials $\pm 12\%$. Accuracy may be less depending upon tank shape. Accuracy may be less near full and empty. Accuracy may be less if tank is not level. This gauge is not to be used for filling. All accuracy estimates are expressed as a percent of full scale.

Temperature Range

-40°F to +158°F, -40°C to 70°C.

Humidity

Paint exposed portions of gauge, less dial, for marine applications.

Shock & Vibration

Suitable for mobile applications.

Power

0.5 watts maximum for TwinSite® versions.

Tank Pressure

Up to 25 psig [1,7Bar]

Approvals

These direct indicating gauges are UL listed for flammable liquids. Some models UL recognized for marine service.

Note: For installation instructions see MS-501/502 (mounting standard).

Materials of Construction*

Head

Die cast aluminum

Centershaft, Support Tube & Float Rod

Tempered aluminum

Gears, Cross Stud & Bearings

Stainless steel

Drive Magnet

Alnico

Gear Housing

Acetal plastic or Aluminum

Float

Nitrile rubber

Gasket

Buna-N, 0015-00004 or 0015-00079

Direct Reading Dial

Aluminum with acrylic crystal, hermetically sealed.

Side Reading Dial

Aluminum with polycarbonate crystal, hermetically sealed.

TwinSite® Sender

Polyamide.

Mounting Bolts

Zinc-plated steel 1/4"-28 x 3/16" long.

When ordering, specify:

1. Gauge model number.
2. Tank diameter and riser height.
3. Mounting location.
4. Ohm range on TwinSite versions.
5. Preferred switch on switch gauges, if other than standard.
6. Any listed options or preferences.

* Materials and specifications are subject to change without notice.

Pressure ratings subject to change due to temperature and other environmental considerations.