

# REMCO™



## PRODUCT CATALOG



## PROFESSIONAL GRADE PUMP PRODUCTS

At Remco Industries, we take pride in our mission to provide each of our customers with Professional Grade products. Remco has been engineering pumps for over 30 years. We guarantee that our pumps will give you the best experience possible.

### PROFESSIONAL GRADE COMMITMENT

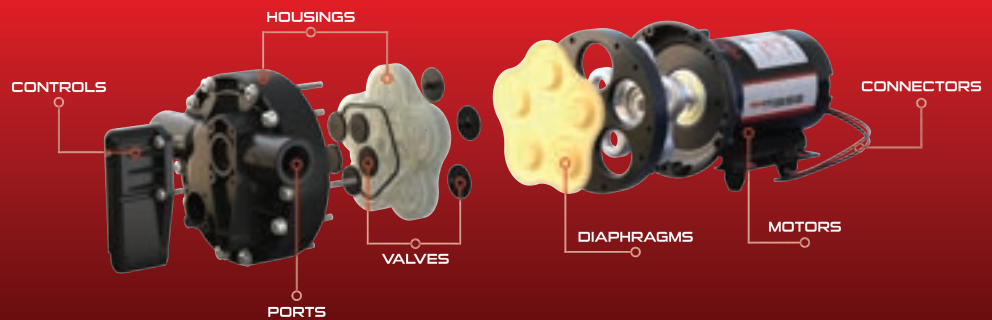
Reliability, quality, and performance all contribute to making our products Professional Grade. Our wide range of electric driven diaphragm pumps are designed to withstand and outperform under the more unforgiving conditions. Our engineers are constantly testing and innovating our pumps to ensure they are the best product available for your applications. When you buy Remco, we deliver Professional Grade.

### PRODUCT BRANDS



## CUSTOM PUMPS

Let Remco build the right pump for your system. With our wide range of components and materials, our pump experts can match any OEM performance specification.



## REMCO RETAIL MARKET

Our complete line of Professional Grade and PowerRV retail products are the perfect addition to any agriculture or RV section. High quality replacement parts paired with visually appealing packaging makes it easy for customers to understand Remco is the Professional Grade choice.





### 3300 SERIES

Pressure Range: 45 - 200 PSI  
Open Flow Range: 1.2 - 2.2 GPM



### 3200 SERIES

Pressure Range: 60 - 100 PSI  
Open Flow Range: 3.5 - 4.5 GPM



### 5500 SERIES

Pressure Range: 60 - 150 PSI  
Open Flow Range: 3.2 - 5.3 GPM



### FATBOY SERIES

Pressure Range: 60 - 100 PSI  
Open Flow Range: 6.25 - 7.0 GPM



### ZEUS SERIES

Pressure Range: 60 PSI  
Open Flow Rate: 10 - 14 GPM



### 2200 SERIES

Pressure Range: 40 PSI  
Open Flow Range: 1.0 GPM



### SMOOTHFLO SERIES

Pressure Setting: 100 PSI  
Open Flow Range: 5.3 - 14 GPM



### ROLLMAX SERIES

Pressure Range: 150 PSI  
Open Flow Range: 9.4 - 24.5 GPM



### ZEUS TRANSFER

Pressure Range: 45 PSI  
Open Flow Rate: 14 GPM



### POWER RV SERIES

Pressure Setting: 45 - 65 PSI  
Open Flow Rate: 3.2 - 5.3 GPM



### REMCO ACCESSORIES

Professional Grade Parts, Components, and Accessories



A John M. Ellsworth Company

John M. Ellsworth Co., Inc.

P.O. Box 240072  
8700 West Bradley Road  
Milwaukee, WI 53224

800-333-3331 **PHONE**

info@jmesales.com **E-MAIL**  
www.JMEsales.com **WEB**

**CUSTOM PUMPS:** Let our pump experts design the perfect pump for your specific OEM application.



➤ AVAILABLE FOR ALL PUMP SERIES



### DIAPHRAGMS

SANTOPRENE  
VITON  
GEOLAST  
BUNA  
HIGH PRIME

### HOUSINGS

NYLON  
POLYPRO  
HIGH FLOW  
HIGH PRESSURE

### VALVES

SANTOPRENE  
VITON  
BUNA  
EPDM

### PORTS

QUICK ATTACH  
FNPT  
MNPT

### MOTORS

SEALED  
12 / 24 / 36 VDC  
115 / 230 AC  
HIGH SPEED / TORQUE  
HEAT SINKS  
ON / OFF SWITCH  
THERMAL PROTECTION

### CONTROLS

DEMAND  
BYPASS  
DUAL CONTROLS  
SMART CONTROLS  
NO CONTROLS  
FLO IQ

### CONNECTORS

LEAD WIRES  
2-PIN MOLD  
CUSTOM LENGTH  
METRIPACK  
WEATHER PACK  
MATE AND LOCK  
HEAT SHRINK



# PUMP PRODUCTS

## 3300 SERIES

The Remco 3300 diaphragm pumps are the most versatile models in Remco's lineup. Constructed with Viton valve material for superior chemical resistance, the 3300 series is ideal for a wide array of spray applications, from agricultural to industrial use. This durable series of electrically driven diaphragm pumps offers flow rates of up to 2.2 GPM, providing professional-grade performance across various demanding applications.



**PRESSURE RANGE: 45 - 200 PSI**

**OPEN FLOW RANGE: 1.2 - 2.2 GPM**

### STANDARD FEATURES

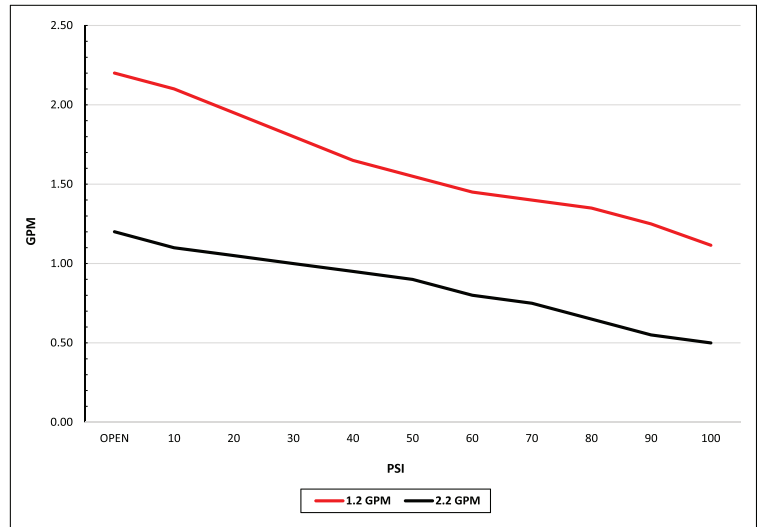
- ▶ Self-priming up to 8 ft. (2.4m) vertically
- ▶ Chemically resistant materials
- ▶ Capable of being run dry without damage
- ▶ 100% factory tested in the USA
- ▶ On demand or bypass pressure controls

### TYPICAL APPLICATIONS

- ▶ Residential and commercial spraying
- ▶ Automotive fluid exchange
- ▶ Bulk fluid transfer
- ▶ Road maintenance

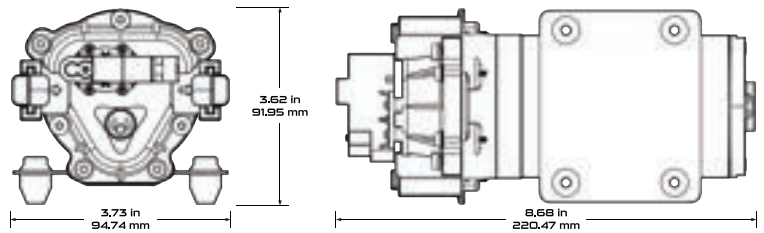
### PUMP PERFORMANCE

(PERFORMANCE MAY VARY)



STANDARD CONFIGURATIONS					
Item Number	Flow	Controls	Pressure	Ports	Voltage
3311-1E1-82B	1.2 GPM (4.5 LPM)	Demand	60 PSI (4.1 BAR)	3/4" QA	12 VDC
3311-2E1-82B	1.2 GPM (4.5 LPM)	Bypass	60 PSI (4.1 BAR)	3/4" QA	12 VDC
3313-1E1-82B	2.2 GPM (4.5 LPM)	Demand	60 PSI (4.1 BAR)	3/4" QA	12 VDC
3313-2E1-82B	2.2 GPM (4.5 LPM)	Bypass	60 PSI (4.1 BAR)	3/4" QA	12 VDC
3321-1E1-82B	1.2 GPM (4.5 LPM)	Demand	60 PSI (4.1 BAR)	3/8" FNPT	12 VDC
3321-2E1-82B	1.2 GPM (4.5 LPM)	Bypass	60 PSI (4.1 BAR)	3/8" FNPT	12 VDC
3323-1E1-82B	2.2 GPM (4.5 LPM)	Demand	60 PSI (4.1 BAR)	3/8" FNPT	12 VDC
3323-2E1-82B	2.2 GPM (4.5 LPM)	Bypass	60 PSI (4.1 BAR)	3/8" FNPT	12 VDC
EXTREME DUTY - FOR HARSH CHEMICALS AND SURFACTANTS					
3321-1E3-82B	1.2 GPM (4.5 LPM)	Demand	60 PSI (4.1 BAR)	3/8" FNPT	12 VDC
3321-2E3-82B	1.2 GPM (4.5 LPM)	Bypass	60 PSI (4.1 BAR)	3/8" FNPT	12 VDC
3323-1E3-82B	2.2 GPM (4.5 LPM)	Demand	60 PSI (4.1 BAR)	3/8" FNPT	12 VDC
3323-2E3-82B	2.2 GPM (4.5 LPM)	Bypass	60 PSI (4.1 BAR)	3/8" FNPT	12 VDC
110/120 VAC CONFIGURATIONS					
3321-1E1-52C	1.2 GPM (4.5 LPM)	Demand	60 PSI (4.1 BAR)	3/8" FNPT	110/120 VAC
3321-2E1-52C	1.2 GPM (4.5 LPM)	Bypass	60 PSI (4.1 BAR)	3/8" FNPT	110/120 VAC
3323-1E1-52C	2.2 GPM (4.5 LPM)	Demand	60 PSI (4.1 BAR)	3/8" FNPT	110/120 VAC
3323-2E1-52C	2.2 GPM (4.5 LPM)	Bypass	60 PSI (4.1 BAR)	3/8" FNPT	110/120 VAC
HIGH PRESSURE CONFIGURATIONS					
3313-1I1-63B	2.2 GPM (4.5 LPM)	Demand	100 PSI (6.9 BAR)	3/4" QA	12 VDC
3313-2I1-63B	2.2 GPM (4.5 LPM)	Bypass	100 PSI (6.9 BAR)	3/4" QA	12 VDC
3323-1I1-63B	2.2 GPM (4.5 LPM)	Demand	100 PSI (6.9 BAR)	3/8" FNPT	12 VDC
3323-2I1-63B	2.2 GPM (4.5 LPM)	Bypass	100 PSI (6.9 BAR)	3/8" FNPT	12 VDC
RETAIL CONFIGURATIONS					
90-3313-1E1-82B-SB	2.2 GPM (4.5 LPM)	Demand	60 PSI (4.1 BAR)	3/4" QA	12 VDC
90-3323-1E1-82B-SB	2.2 GPM (4.5 LPM)	Demand	60 PSI (4.1 BAR)	3/8" FNPT	12 VDC
90-3323-1E3-82B-SB	2.2 GPM (4.5 LPM)	Demand	60 PSI (4.1 BAR)	3/8" FNPT	12 VDC

\*Contact factory for additional configurations\*



### RECOMMENDED PARTS & ACCESSORIES



## 3200 SERIES

The Remco 3200 Series diaphragm pumps deliver reliable performance with flow rates from 3.5 to 4.5 GPM and pressures up to 100 PSI. Designed for durability, they feature advanced materials for long-lasting operation. With on-demand and bypass pressure controls, along with self-priming capabilities, the 3200 Series is built to handle a variety of demanding tasks with consistent efficiency.



**PRESSURE RANGE: 45 - 100 PSI**

### STANDARD FEATURES

- ▶ Self-priming up to 10 ft. (3.1m) vertically
- ▶ Chemically resistant materials
- ▶ Capable of being run dry without damage
- ▶ 100% Factory Tested in the USA
- ▶ On demand or bypass pressure controls
- ▶ For use in longer intermittent duty cycles

### TYPICAL APPLICATIONS

- ▶ Residential and commercial spot and boom spraying
- ▶ Road maintenance
- ▶ Alternative energy
- ▶ Mini-bulk transfer

### STANDARD CONFIGURATIONS

Item Number	Flow	Controls	Pressure	Ports	Voltage
3214-1E1-82B	3.5 GPM (13.25 LPM)	Demand	60 PSI (4.1 BAR)	3/4" QA	12 VDC
3214-2E1-63B	3.5 GPM (13.25 LPM)	Bypass	60 PSI (4.1 BAR)	3/4" QA	12 VDC
3215-1E1-82B	4.0 GPM (15.14 LPM)	Demand	60 PSI (4.1 BAR)	3/4" QA	12 VDC
3215-2E1-63B	4.0 GPM (15.14 LPM)	Bypass	60 PSI (4.1 BAR)	3/4" QA	12 VDC
3216-1E1-82B	4.5 GPM (17.03 LPM)	Demand	60 PSI (4.1 BAR)	3/4" QA	12 VDC
3216-2E1-63B	4.5 GPM (17.03 LPM)	Bypass	60 PSI (4.1 BAR)	3/4" QA	12 VDC
3264-1E1-82B	3.5 GPM (13.25 LPM)	Demand	60 PSI (4.1 BAR)	1/2" MSPT	12 VDC
3264-2E1-82B	3.5 GPM (13.25 LPM)	Bypass	60 PSI (4.1 BAR)	1/2" MSPT	12 VDC
3265-1E1-82B	4.0 GPM (15.14 LPM)	Demand	60 PSI (4.1 BAR)	1/2" MSPT	12 VDC
3265-2E1-63B	4.0 GPM (15.14 LPM)	Bypass	60 PSI (4.1 BAR)	1/2" MSPT	12 VDC
3266-1E1-82B	4.5 GPM (17.03 LPM)	Demand	60 PSI (4.1 BAR)	1/2" MSPT	12 VDC
3266-2E1-82B	4.5 GPM (17.03 LPM)	Bypass	60 PSI (4.1 BAR)	1/2" MSPT	12 VDC

### 110/120 VAC CONFIGURATIONS

3214-1E1-52C	3.5 GPM (13.25 LPM)	Demand	60 PSI (4.1 BAR)	3/4" QA	110/120 VAC
3215-1E1-52C	4.0 GPM (15.2 LPM)	Demand	60 PSI (4.1 BAR)	3/4" QA	110/120 VAC
3216-1E1-52C	4.5 GPM (17.1 LPM)	Demand	60 PSI (4.1 BAR)	3/4" QA	110/120 VAC
2364-1E1-52C	3.5 GPM (13.25 LPM)	Demand	60 PSI (4.1 BAR)	1/2" MSPT	110/120 VAC
2365-1E1-52C	4.0 GPM (15.2 LPM)	Demand	60 PSI (4.1 BAR)	1/2" MSPT	110/120 VAC
2366-1E1-52C	4.5 GPM (17.1 LPM)	Demand	60 PSI (4.1 BAR)	1/2" MSPT	110/120 VAC

### RETAIL CONFIGURATIONS

90-3214-1E1-82B-SB	3.5 GPM (13.25 LPM)	Demand	60 PSI (4.1 BAR)	3/4" QA	12 VDC
--------------------	---------------------	--------	------------------	---------	--------

### RECOMMENDED PARTS & ACCESSORIES



3202-1F77



Fittings



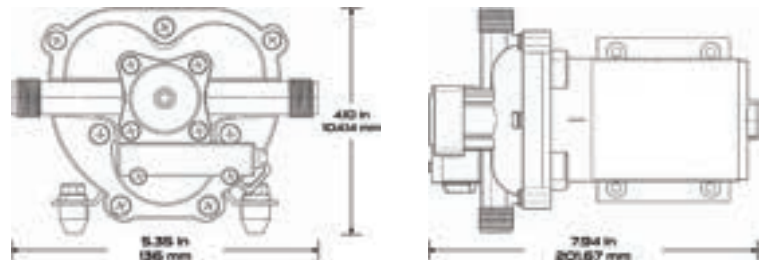
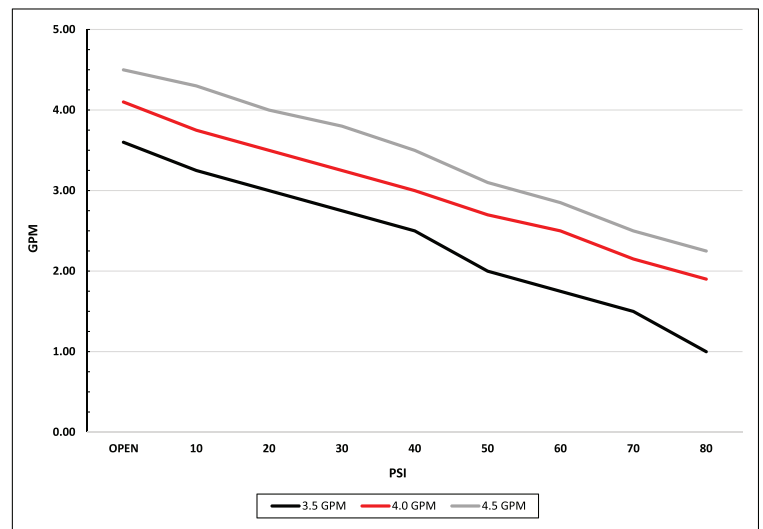
901-009-R



**OPEN FLOW RANGE: 3.2 - 4.5 GPM**

### PUMP PERFORMANCE

(PERFORMANCE MAY VARY)



## 5500 SERIES

The Remco 5500 Series diaphragm pumps are the ultimate solution for demanding fluid handling applications, offering unmatched performance with flow rates from 3.2 to 5.3 GPM and pressures up to 150 PSI. Built with premium Viton valves and Santoprene diaphragms, these pumps provide superior chemical resistance and long-lasting durability. Featuring on-demand and bypass pressure controls, the 5500 Series ensures smooth, consistent operation while efficiently managing system pressure. Perfect for agricultural and industrial applications, these pumps deliver reliable performance, job after job. Upgrade to the Remco 5500 for efficiency and quality you can trust.



**PRESSURE RANGE: 60 - 150 PSI**

**OPEN FLOW RANGE: 3.2 - 5.3 GPM**

### STANDARD FEATURES

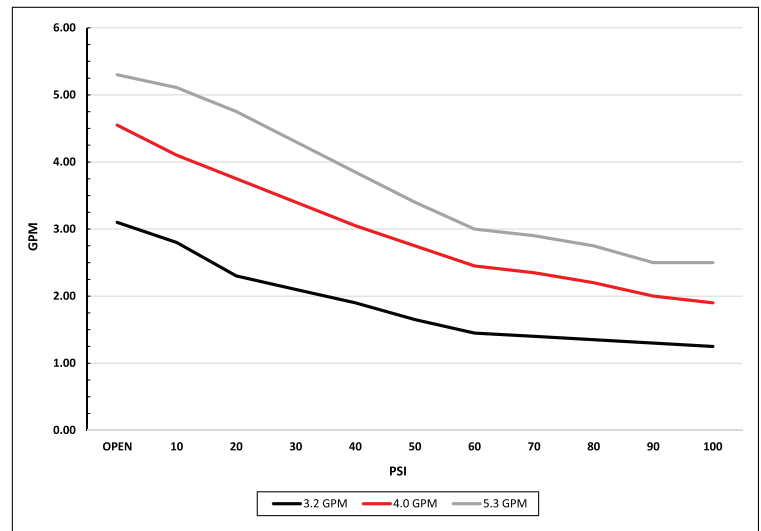
- > Self-priming up to 14 ft. (4.25m) vertically
- > Chemically resistant materials
- > Capable of being run dry without damage
- > 100% factory tested in the USA
- > On demand or bypass pressure controls
- > Efficient electric motors with low power consumption
- > For use in intermittent and continuous duty cycles

### TYPICAL APPLICATIONS

- > Residential and commercial spraying
- > Bulk fluid transfer
- > Dust suppression
- > Liquid fertilizer
- > Road maintenance

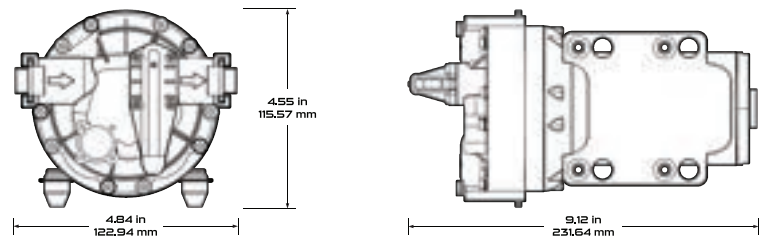
### PUMP PERFORMANCE

(PERFORMANCE MAY VARY)



STANDARD CONFIGURATIONS					
Item Number	Flow	Controls	Pressure	Ports	Voltage
5514-1E1-82B	3.2 GPM (12.11 LPM)	Demand	60 PSI (4.1 BAR)	3/4" QA	12 VDC
5514-2E1-63B	3.2 GPM (12.11 LPM)	Bypass	60 PSI (4.1 BAR)	3/4" QA	12 VDC
5534-1E1-82B	3.2 GPM (12.11 LPM)	Demand	60 PSI (4.1 BAR)	1/2" FNPT	12 VDC
5534-2E1-63B	3.2 GPM (12.11 LPM)	Bypass	60 PSI (4.1 BAR)	1/2" FNPT	12 VDC
5516-1E1-82B	4.0 GPM (15.14 LPM)	Demand	60 PSI (4.1 BAR)	3/4" QA	12 VDC
5516-2E1-63B	4.0 GPM (15.14 LPM)	Bypass	60 PSI (4.1 BAR)	3/4" QA	12 VDC
5536-1E1-82B	4.0 GPM (15.14 LPM)	Demand	60 PSI (4.1 BAR)	1/2" FNPT	12 VDC
5536-2E1-63B	4.0 GPM (15.14 LPM)	Bypass	60 PSI (4.1 BAR)	1/2" FNPT	12 VDC
5517-1E1-82B	5.3 GPM (20.06 LPM)	Demand	60 PSI (4.1 BAR)	3/4" QA	12 VDC
5517-2E1-63B	5.3 GPM (20.06 LPM)	Bypass	60 PSI (4.1 BAR)	3/4" QA	12 VDC
5537-1E1-82B	5.3 GPM (20.06 LPM)	Demand	60 PSI (4.1 BAR)	1/2" FNPT	12 VDC
5537-2E1-63B	5.3 GPM (20.06 LPM)	Bypass	60 PSI (4.1 BAR)	1/2" FNPT	12 VDC
EXTREME DUTY - FOR HARSH CHEMICALS AND SURFACTANTS					
5537-1E3-82B	5.3 GPM (20.06 LPM)	Demand	60 PSI (4.1 BAR)	1/2" FNPT	12 VDC
5537-2E3-63B	5.3 GPM (20.06 LPM)	Bypass	60 PSI (4.1 BAR)	1/2" FNPT	12 VDC
110/120 VAC CONFIGURATIONS					
5534-1E1-58C	3.2 GPM (12.11 LPM)	Demand	60 PSI (4.1 BAR)	1/2" FNPT	110/120 VAC
5536-1E1-58C	4.0 GPM (15.14 LPM)	Demand	60 PSI (4.1 BAR)	1/2" FNPT	110/120 VAC
5537-1E1-65C	5.3 GPM (20.06 LPM)	Demand	60 PSI (4.1 BAR)	1/2" FNPT	110/120 VAC
HIGH PRESSURE CONFIGURATIONS					
5514-111-63B	3.2 GPM (12.11 LPM)	Demand	100 PSI (6.9 BAR)	3/4" QA	12 VDC
5516-111-63B	4.0 GPM (15.14 LPM)	Demand	100 PSI (6.9 BAR)	3/4" QA	12 VDC
5517-111-63B	5.3 GPM (20.06 LPM)	Demand	100 PSI (6.9 BAR)	3/4" QA	12 VDC
RETAIL CONFIGURATIONS					
90-5517-1E1-82B-SB	5.3 GPM (20.06 LPM)	Demand	60 PSI (4.1 BAR)	3/4" QA	12 VDC
90-5537-1E1-82B-SB	5.3 GPM (20.06 LPM)	Demand	60 PSI (4.1 BAR)	1/2" FNPT	12 VDC

\*Contact factory for additional configurations\*



### RECOMMENDED PARTS & ACCESSORIES



## FATBOY SERIES

The Remco Fatboy Series diaphragm pumps are engineered for the most demanding duty cycles, delivering impressive flow rates of up to 7.0 GPM and handling pressures up to 100 PSI. Built for high-volume applications, these pumps are designed to endure rigorous use, providing unmatched reliability in agricultural, industrial, and high-demand spraying tasks. Featuring durable Viton valves and Santoprene diaphragms, the Fatboy Series offers superior chemical resistance and long-lasting performance. With on-demand and bypass pressure controls, plus self-priming capabilities up to 14 feet, the Fatboy is built to tackle tough jobs day in and day out.



**PRESSURE RANGE: 60 - 100 PSI**



**OPEN FLOW SETTING: 7.0 GPM**

### STANDARD FEATURES

- ▶ Self-Priming up to 14 ft. (4.25m) vertically
- ▶ Chemically resistant materials
- ▶ Capable of being run dry without damage
- ▶ 100% Factory Tested in the USA
- ▶ On Demand or Bypass Pressure controls
- ▶ Heavy duty electric motor with high output
- ▶ For use in intermittent and continuous duty cycles

### TYPICAL APPLICATIONS

- ▶ Residential and Commercial Spraying
- ▶ Bulk Fluid Transfer
- ▶ Dust Suppression
- ▶ Liquid Fertilizer
- ▶ Road Maintenance

### STANDARD CONFIGURATIONS

Item Number	Flow	Controls	Pressure	Ports	Voltage
5518-1E1-94A	7.0 GPM (26.5 LPM)	Demand	60 PSI (4.1 BAR)	3/4" QA	12 VDC
5518-2E1-94A	7.0 GPM (26.5 LPM)	Bypass	60 PSI (4.1 BAR)	3/4" QA	12 VDC
5538-1E1-94A	7.0 GPM (26.5 LPM)	Demand	60 PSI (4.1 BAR)	1/2" FNPT	12 VDC
5538-2E1-94A	7.0 GPM (26.5 LPM)	Bypass	60 PSI (4.1 BAR)	1/2" FNPT	12 VDC

### 110/120 VAC CONFIGURATIONS

Item Number	Flow	Controls	Pressure	Ports	Voltage
5518-1E1-69C	7.0 GPM (26.5 LPM)	Demand	60 PSI (4.1 BAR)	3/4" QA	110/120 VAC
5518-2E1-69C	7.0 GPM (26.5 LPM)	Bypass	60 PSI (4.1 BAR)	3/4" QA	110/120 VAC
5538-1E1-69C	7.0 GPM (26.5 LPM)	Demand	60 PSI (4.1 BAR)	1/2" FNPT	110/120 VAC
5538-2E1-69C	7.0 GPM (26.5 LPM)	Bypass	60 PSI (4.1 BAR)	1/2" FNPT	110/120 VAC

### HIGH PRESSURE CONFIGURATIONS

Item Number	Flow	Controls	Pressure	Ports	Voltage
5518-1I1-94A	7.0 GPM (26.5 LPM)	Demand	100 PSI (6.9 BAR)	3/4" QA	12 VDC
5518-2I1-94A	7.0 GPM (26.5 LPM)	Bypass	100 PSI (6.9 BAR)	3/4" QA	12 VDC
5538-1I1-94A	7.0 GPM (26.5 LPM)	Demand	100 PSI (6.9 BAR)	1/2" FNPT	12 VDC
5538-2I1-94A	7.0 GPM (26.5 LPM)	Bypass	100 PSI (6.9 BAR)	1/2" FNPT	12 VDC

### RETAIL CONFIGURATIONS

90-5518-1E1-94A-SB	7.0 GPM (26.5 LPM)	Demand	60 PSI (4.1 BAR)	3/4" QA	12 VDC
90-5538-1E1-94A-SB	7.0 GPM (26.5 LPM)	Demand	60 PSI (4.1 BAR)	1/2" FNPT	12 VDC

\*Contact factory for additional configurations\*

### RECOMMENDED PARTS & ACCESSORIES



PSW-FB-60-R



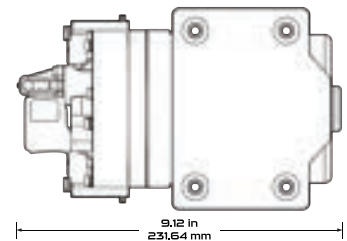
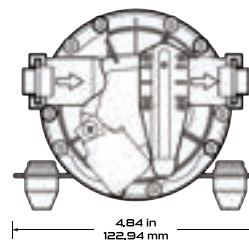
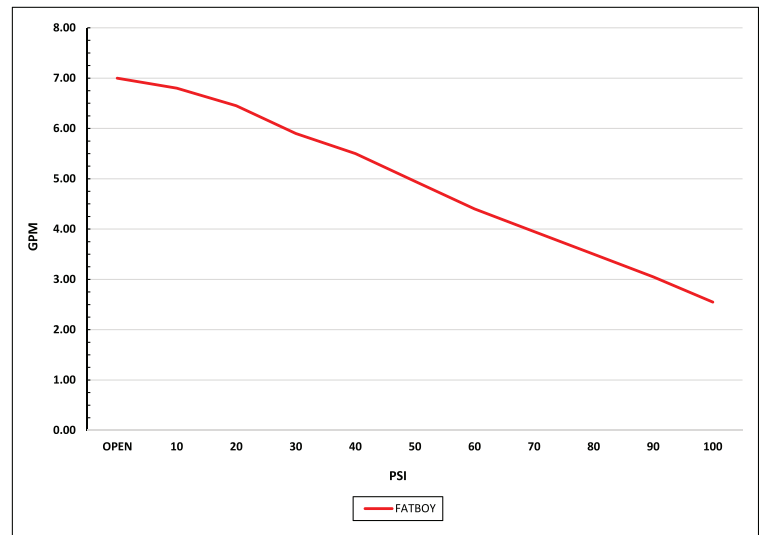
901-013-R



901-RC02-R

### PUMP PERFORMANCE

(PERFORMANCE MAY VARY)





The Remco Zeus Series is a powerful, professional-grade diaphragm pump engineered for demanding spraying and chemical mixing applications. Delivering up to 14 GPM and a maximum pressure of 80 PSI, the Zeus provides unmatched reliability and precision under heavy-duty conditions. Available in 12V, 24V, and 115VAC configurations, it replaces gas engine-driven pumps with a more efficient, eco-friendly solution that doesn't compromise on strength or performance. Built for tough, high-intensity tasks, the Zeus ensures superior durability and consistent operation, making it the ideal choice for industries that require top-tier performance and dependability in chemical handling.

**PRESSURE SETTING: 60 PSI**

### STANDARD FEATURES

- ▶ Self-Priming up to 14 ft. (4.25m) vertically
- ▶ Chemically resistant materials
- ▶ Capable of being run dry without damage
- ▶ 100% Factory Tested in the USA
- ▶ On Demand or Bypass pressure controls
- ▶ Fan-Cooled Electric Motor
- ▶ High flow intermittent duty

### TYPICAL APPLICATIONS

- ▶ Agriculture and Industrial Commercial Spraying
- ▶ Bulk Fluid Transfer
- ▶ Liquid Deicing
- ▶ Drone Spray Fill
- ▶ Batch Mixing

10 GALLONS PER MINUTE					
Item Number	Flow	Controls	Pressure	Ports	Voltage
9555-1E5-961	10 GPM (37.9 LPM)	Demand	60 PSI (4.1 BAR)	1" FNPT	12 VDC
9555-2E5-961	10 GPM (37.9 LPM)	Bypass	60 PSI (4.1 BAR)	1" FNPT	12 VDC
9555-1E5-981	10 GPM (37.9 LPM)	Demand	60 PSI (4.1 BAR)	1" FNPT	115 VAC
9555-2E5-981	10 GPM (37.9 LPM)	Bypass	60 PSI (4.1 BAR)	1" FNPT	115 VAC
14 GALLONS PER MINUTE					
9559-2E5-961	14 GPM (52.9 LPM)	Demand	60 PSI (4.1 BAR)	1" FNPT	12 VDC
9559-1E5-981	14 GPM (52.9 LPM)	Bypass	60 PSI (4.1 BAR)	1" FNPT	115 VAC
9559-2E5-981	14 GPM (52.9 LPM)	Demand	60 PSI (4.1 BAR)	1" FNPT	115 VAC

\*Contact factory for additional configurations\*

## 2200 SERIES

The Remco 2200 Series Economy Plus pump delivers reliable performance with up to 1.0 GPM and 40 PSI. Compact and cost-effective, it's perfect for light-duty spraying and chemical handling. With self-priming capabilities and durable construction, it's an ideal solution for budget-conscious, intermittent applications.

**PRESSURE RANGE: 40 PSI**

STANDARD CONFIGURATIONS					
Item Number	Flow	Controls	Pressure	Ports	Voltage
2240-1B1-10E	1.0 GPM (3.78 LPM)	Demand	40 PSI (2.8 BAR)	3/8" HB	12 VDC
2240-1B1-10I	1.0 GPM (3.78 LPM)	Demand	40 PSI (2.8 BAR)	3/8" HB	12 VDC (Power Switch)
RETAIL CONFIGURATION					
2240-1B1-10E-SB	1.0 GPM (3.78 LPM)	Demand	40 PSI (2.8 BAR)	3/8" HB	12 VDC

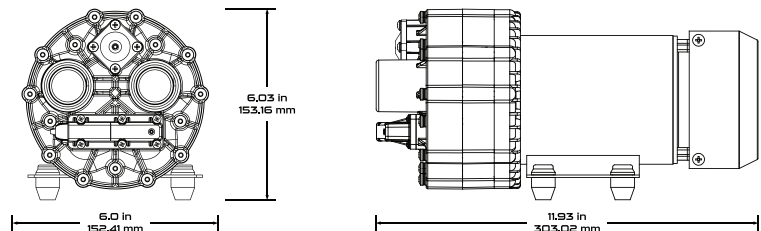
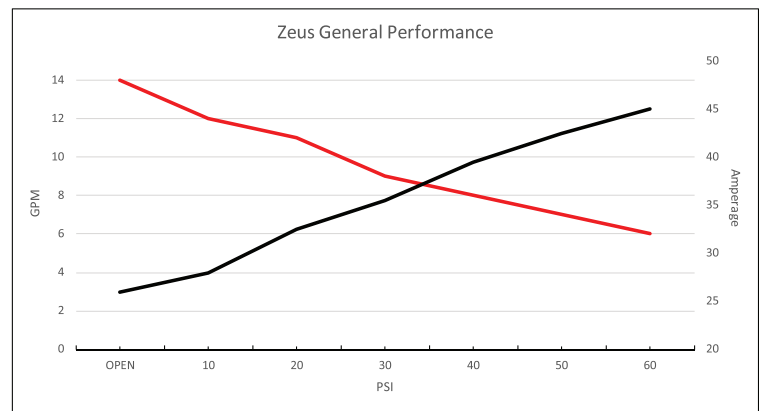
\*Contact factory for additional configurations\*



**OPEN FLOW RATE: 10 - 14 GPM**

### PUMP PERFORMANCE

(PERFORMANCE MAY VARY)



### Economy Plus+



**OPEN FLOW RANGE: 1.0 GPM**

### STANDARD FEATURES

- ▶ Self-Priming up to 4 ft. (1.2m) vertically
- ▶ Chemically resistant materials
- ▶ Capable of being run dry without damage
- ▶ On Demand pressure switch

### TYPICAL APPLICATIONS

- ▶ Agricultural Spot Spraying
- ▶ Deicing
- ▶ Construction

## SMOOTH FLO®

SmoothFlo pumps have revolutionized the performance of diaphragm pumps. Our exclusive FLO-IQ technology will completely eliminate rapid switch cycling. SmoothFlo pumps are the perfect option for any softwash job.

### THE ULTIMATE BLEACH & SOFTWASH PUMP

**PRESSURE SETTING: 100 PSI**

\*PRESSURE SETTING NOT ADJUSTABLE IN THE FIELD\*

#### TECHNICAL INFORMATION

- > 3/4" Quick Attach ports
- > 12VDC - 14-12 AWG wire leads 12" length
- > Vertical self-priming up to 14 ft
- > 140°F (60°C) max liquid temperature
- > 180°F (82°C) max motor shell temperature
- > Heavy duty sealed electric motor
- > 100% factory tested performance
- > Run dry capable

#### OPTIMAL SETUP

- > 5/8" ID outlet hose recommended, minimum hose size 1/2" ID
- > 5.3 GPM use size 30 spray tips minimum
- > 7.0 GPM use size 40 spray tips minimum
- > 200 ft maximum hose reel length
- > Do Not exceed 90 PSI operating pressure
- > **IF RAPID SWITCH CYCLING OCCURS, CONTACT FACTORY IMMEDIATELY**
- > Size fuse according to max amperage listed on pump label
- > Recommend power source is a 12 vdc lithium ion battery

#### TYPICAL APPLICATIONS

- > Softwash or bleach applications
- > Chemical spraying
- > Alternative energy
- > Washdown and dust suppression

#### RECOMMENDED ACCESSORIES



PSW-5100R-80



PSW-FB-80-R



RACT-820-NTP



901-RC01-R

#### STANDARD CONFIGURATIONS

Item Number	Flow	Controls	Pressure	Ports	Voltage
3923-911-82B	2.2 GPM (4.5 LPM)	FLO-IQ	120 PSI (8.3 BAR)	3/8" FNPT	12 VDC
5917-911-63B	5.3 GPM (20.06 LPM)	FLO-IQ	100 PSI (6.9 BAR)	3/4" QA	12 VDC
5918-911-94A	7.0 GPM (26.5 LPM)	FLO-IQ	100 PSI (6.9 BAR)	3/4" QA	12 VDC

#### 110/120 CONFIGURATIONS

5917-911-65C	5.3 GPM (20.06 LPM)	FLO-IQ	100 PSI (6.9 BAR)	3/4" QA	110/120 VAC
5918-911-69A	7.0 GPM (26.5 LPM)	FLO-IQ	100 PSI (6.9 BAR)	3/4" QA	110/120 VAC

#### RETAIL CONFIGURATIONS

90-5917-911-63B-SB	5.3 GPM (20.06 LPM)	FLO-IQ	100 PSI (6.9 BAR)	3/4" QA	12 VDC
90-5918-911-94A-SB	7.0 GPM (26.5 LPM)	FLO-IQ	100 PSI (6.9 BAR)	3/4" QA	12 VDC

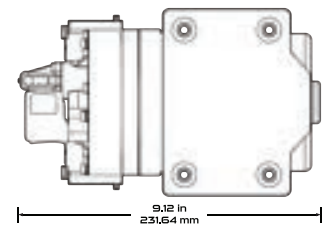
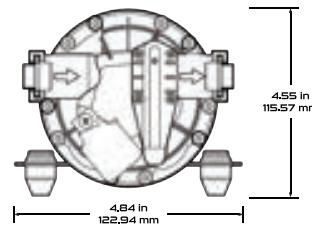
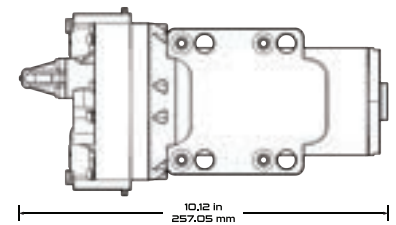
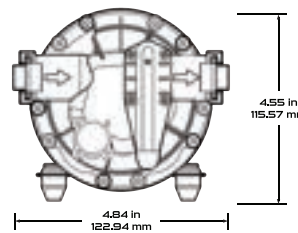
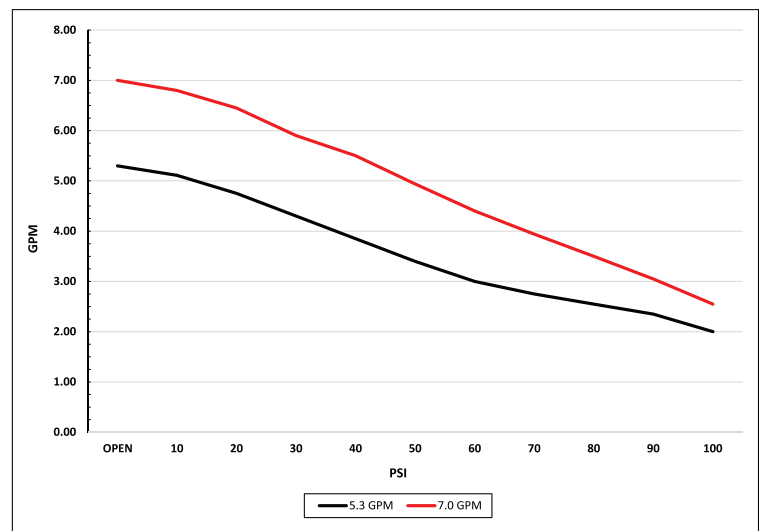
\*Contact factory for additional configurations\*



**OPEN FLOW RANGE: 5.3 - 7.0 GPM**

#### PUMP PERFORMANCE

(PERFORMANCE MAY VARY)



## SMOOTH FLO®



Zeus is the evolution the SoftWash industry has been asking for. Higher flow, higher pressure, and higher reach.



**ONE YEAR LIMITED  
90 DAY COMMERCIAL WARRANTY**

**PRESSURE SETTING: 150 PSI DUAL CONTROL**

**\*PRESSURE SETTING NOT ADJUSTABLE IN THE FIELD\***

**OPEN FLOW RATE: UP TO 14 GPM - 24 VDC**

### TECHNICAL INFORMATION

- > 1" FNPT ports
- > 24 VDC - 10 AWG 12" wire leads
- > Vertical self-priming up to 14ft
- > 140°F (60°C) max liquid temperature
- > 180°F (82°C) max motor shell temperature
- > Heavy duty fan cooled motor with heatsink
- > 100% factory tested performance
- > Run dry capable

### OPTIMAL SYSTEM SETUP

- > 3/4" ID outlet hose recommended
- > Use size 50 spray tips and above
- > 200ft maximum length hose
- > Do not exceed 130 PSI operating pressure
- > If rapid switch cycling occurs contact factory immediately
- > Pressure gauge near pump to aid with system monitoring
- > 50 AMP fuse recommended
- > Power with 24V lithium ion battery

### TYPICAL APPLICATIONS

- > Softwash applications
- > Washdown and dust suppression
- > AG and industrial spraying (compatible with most common chemicals)

### COMMON ACCESSORIES USE WITH SMOOTHFLO PUMPS



RACT-820-NPT



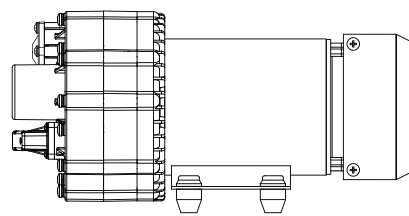
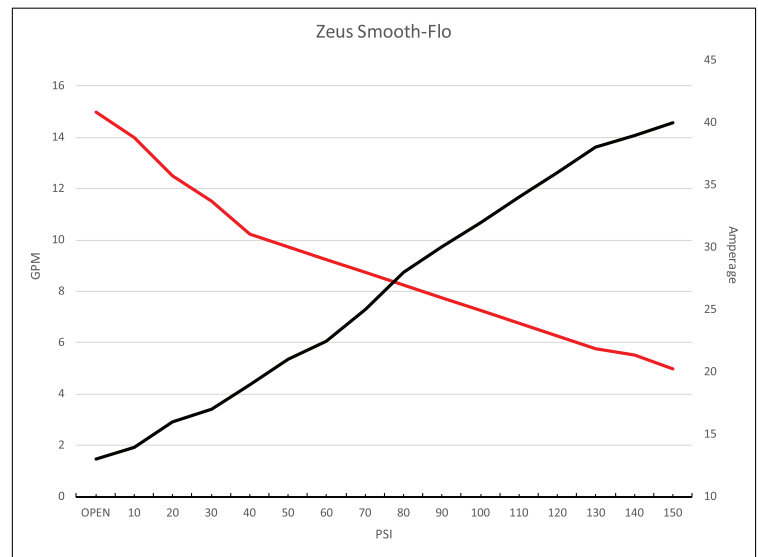
901-RC02-R

#### STANDARD CONFIGURATIONS

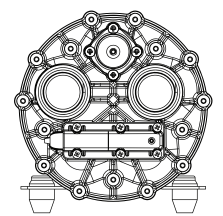
Item Number	Flow	Controls	Pressure	Ports	Voltage
9559-9K5-971	14 GPM (52.9 LPM)	DUAL	150 PSI (10.3 BAR)	1" FNPT	24 VDC

### PUMP PERFORMANCE

(PERFORMANCE MAY VARY)



11.93 in  
303.02 mm



6.03 in  
153.16 mm

6.0 in  
152.41 mm

# ROLLMAX

RollMax is the newest addition to the Remco line of Professional Grade pumps. Durable components, quality accessories, and serviceable by our Rebuild Ready design make this pump a versatile product to have in the field.

## ROLLMAX R440 SERIES

(DIMENSIONS MAY VARY BY MODEL)

ROLLMAX 4 ROLLER CONFIGURATIONS	
Item Number	Description
R440C	4 Roller, Cast Iron, CW Rotation, 5/8" Shaft
R440SS	4 Roller, Stainless Steel, CW Rotation, 5/8" Shaft
R441C	4 Roller, Cast Iron, CW Rotation, 1/2" Hollow Shaft
R441SS	4 Roller, Stainless Steel, CW Rotation, 1/2" Hollow Shaft



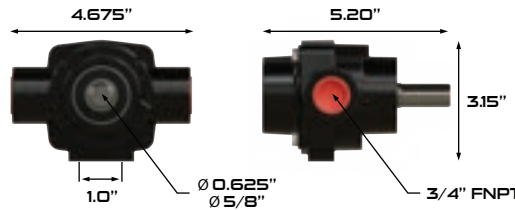
CAST IRON



STAINLESS STEEL

## PUMP SPECIFICATIONS

- Maximum Flow Rate: 9.4 GPM
- Maximum Pressure: 100 PSI
- Maximum Speed: 2600 RPM
- Rotation: Clockwise
- Shaft Size: 5/8" or 1/2" hollow
- Ports: 3/4" FNPT



## FOR GAS ENGINE USE

ROLLMAX R440 SERIES PERFORMANCE CHART				
PSI	1800 RPM	2200 RPM	2600 RPM	
0	6.5	8.0	9.6	
20	5.8	7.0	8.5	
40	5.1	6.2	8.0	
100	4.5	5.6	7.5	
150	4.0	5.5	7.3	

## ROLLMAX R660 SERIES

(DIMENSIONS MAY VARY BY MODEL)

ROLLMAX 6 ROLLER CONFIGURATIONS	
Item Number	Description
R660C	6 Roller, Cast Iron, CCW Rotation, 5/8" Shaft
R660SS	6 Roller, Stainless Steel, CCW Rotation, 5/8" Shaft
R660C-TAK	6 Roller Kit, Cast Iron, CCW Rotation, 5/8" Shaft, Torque Arm and Chain, Multi-Speed Coupler



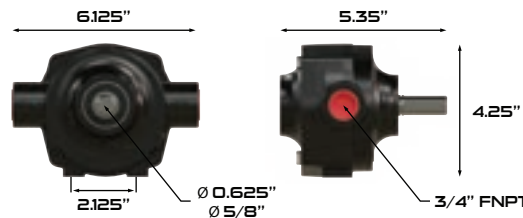
CAST IRON



STAINLESS STEEL

## PUMP SPECIFICATIONS

- Maximum Flow Rate: 19.6 GPM
- Max Continuous Pressure: 150 PSI
- Max Intermittent Pressure: 300 PSI
- Maximum Speed: 1200 RPM
- Rotation: Counter Clockwise
- Shaft Size: 5/8"
- Ports: 3/4" FNPT



## ROLLMAX R660 SERIES PERFORMANCE CHART

PSI	540 RPM	850 RPM	1000 RPM	
0	10.5	16.7	19.6	
20	9.7	16.2	19.0	
40	8.6	15.7	18.5	
100	6.9	14.0	16.5	
150	5.7	12.8	15.0	

## ROLLMAX R880 SERIES

(DIMENSIONS MAY VARY BY MODEL)

ROLLMAX 8 ROLLER CONFIGURATIONS	
Item Number	Description
R880C	8 Roller, Cast Iron, CCW Rotation, 15/16" Shaft
R880SS	8 Roller, Stainless Steel, CCW Rotation, 15/16" Shaft
R880C-TAK	8 Roller Kit, Cast Iron, CCW Rotation, 15/16" Shaft, Torque Arm and Chain, Multi-Speed Coupler



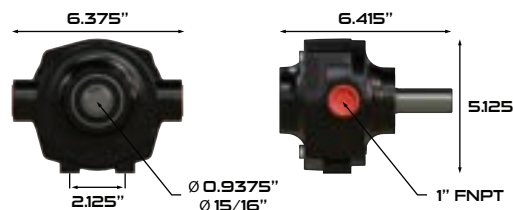
CAST IRON



STAINLESS STEEL

## PUMP SPECIFICATIONS

- Maximum Flow Rate: 24.5 GPM
- Max Continuous Pressure: 150 PSI
- Max Intermittent Pressure: 300 PSI
- Maximum Speed: 1000 RPM
- Rotation: Counter Clockwise
- Shaft Size: 15/16"
- Ports: 1" FNPT



## ROLLMAX R880 SERIES PERFORMANCE CHART

PSI	540 RPM	850 RPM	1000 RPM	
0	13.0	20.0	24.5	
20	12.4	19.8	23.3	
40	11.6	19.1	22.4	
100	10.0	17.4	20.7	
150	8.5	16.0	19.3	

## ROLLMAX SERIES - REBUILD READY

Remco's RollMax Series can easily be serviced and rebuilt in a matter of minutes, the only tool required is a wrench. All of this is possible while the pump remains attached to the drive shaft and the plumbing remains intact.

1. Loosen and remove the 4 cap bolts.
2. Easily slide the pumps endplate off of the shaft, be careful not to damage the shaft seal.
3. Inspect and replace worn rollers as needed with our universal repair kits. Be sure to lubricate the shaft seal before reinstalling.
4. Carefully reinstall pump endplate and cap bolts.
5. RollMax is ready to spray.



### ROLLMAX COUPLERS

Item Number	Description
RMC585410	5/8" Shaft, 540/1000 RPM Multi-Speed, Cast Aluminum/Zinc, Set Screws Included
RMC151651	15/16" Shaft, 540/1000 RPM Multi-Speed, Cast Aluminum/Zinc, Set Screws Included
RC5858	5/8" Gas Engine Adapter Coupler, Set Screws Included



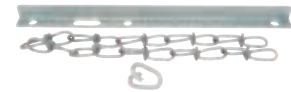
### ROLLMAX REPAIR KITS

Item Number	Description
R440RK	Universal Repair Kit, 4 Max Rollers 1/2", Needle Bearing, 2 Lip Seals, O-Ring, Pill Key
R660RK	Universal Repair Kit, 6 Max Rollers 3/4", Needle Bearing, 2 Lip Seals, O-Ring, Pill Key
R880RK	Universal Repair Kit, 8 Max Rollers 3/4", Needle Bearing, 2 Lip Seals, O-Ring, Pill Key



### TORQUE BAR AND CHAIN

Item Number	Description
RMTAC	Torque Bar and Chain - For PTO mounted pumps to prevent rotation





## ZEUS BULK TRANSFER PUMP

Zeus is the ultimate bulk transfer pump for AG and Industrial use. Capable of running long duty cycles and materials compatible with virtually all common chemicals make Zeus the Professional Grade option for bulk transfer.

**OPEN FLOW RATE: UP TO 14 GPM**

- > Self-priming diaphragm pump with bypass
- > 50 AMP fuse protected motor for heat and safety
- > 1+ hour duty cycle during transfer
- > 1" FNPT ports for easy connection
- > Integrated on/off switch
- > Replacement pump head available
- > 2 year limited warranty included

### BULK/DEF TRANSFER PUMP KIT CONTENTS

- > Pump mounting bracket
- > Adapter 1" male NPT x 1" hose barb
- > Elbow 1" male NPT x 1" hose barb
- > Cam lock (D) 2" female coupler x 2" female NPT
- > Ball valve full port 1" female NPT
- > Nipple 1" male NPT x 1" male NPT
- > Nozzle 45 degree 1" male NPT
- > 1" hose clamps
- > Snap-pins
- > 5' of 1" suction hose
- > 12' of 1" discharge hose



## ZEUS DEF PUMP

Zeus is a game changer for transferring DEF. Zeus is fully compliant with the ISO22241-3 standard for handling of DEF. A high flow rate paired with an efficient motor design bring Professional Grade into the DEF market.



### DEF TRANSFER PUMP CONFIGURATIONS

ZDEF-9500	12 VDC, PUMP ONLY 18" WITH BATTERY CLIPS AND 50 AMP FUSE	ZDEFK-9500	12 VDC, TRANSFER KIT
ZDEF-9515	115 VAC, PUMP ONLY 6' CORD 3 PRONG PLUG	ZDEFK-9515	115 VAC, TRANSFER KIT



### BULK TRANSFER PUMP CONFIGURATIONS

ZI-9500	12 VDC, PUMP ONLY 18" WITH BATTERY CLIPS AND 50 AMP FUSE	ZTK-9500	12 VDC, TRANSFER KIT
ZI-9515	115 VAC, PUMP ONLY 6' CORD 3 PRONG PLUG	ZTK-9515	115 VAC, TRANSFER KIT

### BULK/DEF TRANSFER TECHNICAL INFORMATION

Check Valve	Internal; EPA 165.45 compliant
Vertical Suction Lift	Self-priming up to 14ft (4.25m)
Motor	1-2 HP; 375W
AMPS	12 VDC: 40 AMPS 115 VAC: 5 AMPS
Ports	1" FNPT inlet/outlet
Wetted Materials	Polypropylene, Santoprene, Viton



## POWER RV™

Remco's line of Power RV fresh water pumps are designed for reliability and dependability. Each pump in the series is built with a focus on the Professional Grade quality Remco is known for. Each unit is 100% factory tested and factory set for optimal performance. Advanced safety features in the Power RV line up include thermal overload, Flo-IQ pressure control, and low voltage protection. Typical applications include fresh water, RV and coach water systems, alternative energy, and off-grid water supply.

### 3200 SERIES

This direct OEM replacement pump features high quality components and amazing performance; making the Remco 3200 RV Series a price performance leader. This compact pump is the perfect addition to your RV fresh water system.

#### PRODUCT FEATURES

- > Direct OEM replacement for most RV's
- > Virtually silent operation with noise dampening rubber base
- > Thermal overload protection
- > Capable of being run dry

OPEN FLOW SETTING: 3.2 GPM

PRESSURE SETTING: 45 PSI



#### STANDARD CONFIGURATIONS

Item Number	Flow	Pressure	Ports	Voltage	Dimensions
3214-1C4-82L	3.2 GPM (12.11 LPM)	45 PSI (3.1 BAR)	3/4" QA	12 VDC	4.55" x 2.51" x 6.90" (115 x 64 x 175 mm)
3214-1C4-52C	3.2 GPM (12.11 LPM)	45 PSI (3.1 BAR)	3/4" QA	12 VDC	4.55" x 2.51" x 6.90" (115 x 64 x 175 mm)
90-3214-1C4-82L-SB	3.2 GPM (12.11 LPM)	45 PSI (3.1 BAR)	3/4" QA	12 VDC	4.55" x 2.51" x 6.90" (115 x 64 x 175 mm)

### REBEL SERIES

Engineered to withstand the most rigorous and punishing duty cycles; the PowerRV Rebel Series is a top of the line performer. This pump is built using the highest quality components; delivering an all new level of performance.

#### PRODUCT FEATURES

- > Higher flow and pressure boosting performance
- > Dual pressure controls dampen pulsation and extend switch life
- > Virtually silent operation with noise dampening rubber base
- > Thermal overload protection
- > Capable of being run dry

OPEN FLOW RANGE: 3.2 - 5.3 GPM

PRESSURE SETTING: 60 PSI



#### STANDARD CONFIGURATIONS

Item Number	Flow	Pressure	Ports	Voltage	Dimensions
53REBEL-JRV	3.2 GPM (12.11 LPM)	60 PSI (4.13 BAR)	3/4" QA	12 VDC	4.90" x 4.60" x 8.90" (123 x 115 x 225 mm)
54REBEL-JRV	4.0 GPM (15.14 LPM)	60 PSI (4.13 BAR)	3/4" QA	12 VDC	4.90" x 4.60" x 8.90" (123 x 115 x 225 mm)
55REBEL-JRV	5.3 GPM (20.06 LPM)	60 PSI (4.13 BAR)	3/4" QA	12 VDC	4.90" x 4.60" x 8.90" (123 x 115 x 225 mm)
55REBEL-65C	5.3 GPM (20.06 LPM)	60 PSI (4.13 BAR)	3/4" QA	115 VAC	4.90" x 4.60" x 10.0" (123 x 115 x 264 mm)

### AQUAJET SERIES

With years of field proven reliability, patented variable speed technology, and five chamber design; the PowerRV Aquajet Series has earned the reputation as the most advanced RV water system pump on the market.

#### PRODUCT FEATURES

- > Variable speed Smart pump gives you "Just like home water supply"
- > Supplying only the amount of water needed, up to 4 spickets at once
- > Low voltage protection saving your battery life
- > Thermal overload protection
- > Capable of being run dry

OPEN FLOW RANGE: 3.4 - 5.3 GPM

PRESSURE SETTING: 65 PSI



#### STANDARD CONFIGURATIONS

Item Number	Flow	Pressure	Ports	Voltage	Dimensions
55AQUAJET-AES	3.4 GPM (12.9 LPM)	65 PSI (4.5 BAR)	3/4" QA	12 VDC	4.90" x 4.60" x 10.0" (123 x 115 x 264 mm)
55AQUAJET-ARV	5.3 GPM (20.06 LPM)	65 PSI (4.5 BAR)	3/4" QA	12 VDC	4.90" x 4.60" x 10.0" (123 x 115 x 264 mm)
55AQUAJET-WVS45-115	4.5 GPM (17.03 LPM)	65 PSI (4.5 BAR)	3/4" QA	115 VAC	4.90" x 4.60" x 10.0" (123 x 115 x 264 mm)

### RECOMMENDED ACCESSORIES



QTS-556



R-309TB53-R



RACT-820-NPT



MF-34F34M



25-181



FQ5S-12



FQ5E-12

## ACCUMULATOR TANK

Our food grade pressurized fluid holding tank/pulsation dampener can be installed in a demand driven fluid system to reduce pulsations, smooth out flow, and extend pump life.

### PRODUCT FEATURES

- > Professional Grade
- > 100% Factory tested performance
- > Compact and efficient design
- > Extended pump and pressure switch life

### TYPICAL APPLICATIONS

- > Fresh water applications
- > Dampen pump pulsation
- > Chemical spraying
- > Noise reduction



### STANDARD CONFIGURATIONS

Item Number	Ports	Dimensions	Total Volume	Max PSI
RACT-820-NPT	1/2" Male NPT	8.92" x 4.8" x 4.13"	3/4" QA	12 VDC
RACT-820-JG	3/8" John Guest	8.92" x 4.8" x 4.13"	3/4" QA	12 VDC

## ELECTRONIC FLUID METER

The Remco Electronic Fluid Meter is a positive displacement, nutating disk fluid meter that boasts an industry leading full color LCD backlit display. This meter is menu driven for ease of use a provides intuitive calibration and meter functions.

### PRODUCT FEATURES

- > 3.5" Full color LCD display
- > Simple one touch operation
- > Menu driven for ease of use
- > All-in-one calibration procedure eliminates the need for multiple calibration modes

### TECHNICAL INFORMATION

- > **Flow Range:** 2-30 GPM (Configuration based)
- > **Maximum Pressure:** 40 PSI
- > **Power Source:** Two CR 123 Batteries
- > **Accuracy:** +- 0.5%
- > **Auto Shut-Off:** 30 Seconds
- > **Auto Wake-Up:** With flow



### STANDARD CONFIGURATIONS

Item Number	Description
ZFM-V	Flow Meter, Viton Seals, 1" Inlet/Outlet Ports, 30 GPM, 40 PSI Max

## POWER PRO BATTERY SYSTEM

Transform your 12 volt sprayer pump with the Remco PowerPro system. This 20 volt lithium-ion battery pack provides up to 90 minutes of wireless power to your sprayer system.

### PRODUCT FEATURES

- > Wireless pump power pack (60ft range)
- > 13.5 VDC output for high performance
- > 30-90 Minutes of pressure on a single charge
- > Full charge in less that 4 hours
- > Power indication light
- > Advanced safety features
- > Compatible with 12V Professional Grade pumps (and most other pump brands)

### PACKAGE CONTENTS

- > 1 - Power Pro™ battery pack
- > 1 - Power Pro™ control unit
- > 1 - Power Pro™ battery charger
- > 1 - Power Pro™ remote
- > 1 - Hardware pack
- > 1 - Installation manual



### STANDARD CONFIGURATIONS

Item Number	Description
RBP-2005-RS	Power Pro 20 Volt Complete Battery System
RBP-2005-BP	Power Pro, 20 Volt Battery Only

## RATE CONTROLLER

The Remco Rate Controller is an unmatched fit for variable volume fertilizer applications. Smooth and reliable operation across a wide range of speeds makes it the perfect compliment to our line of Professional Grade pumps.

### PRODUCT FEATURES

- > Heavy duty sealed wire connections
- > 12 VDC with 35 AMP rating
- > Reverse polarity protection
- > Fuse protection
- > Auxillary pressure gauge kit available
- > Digital pressure display
- > Limit/implement switch connection
- > Manual rheostat sized for use with Professional Grade pumps



### STANDARD CONFIGURATIONS

Item Number	Description
RRC35-NG	Rate Controller, No Gauge, 35 AMP
RRC35-DD	Rate Controller, Digital Display, 35 AMP, Pressure Sensor/Cable

### STANDARD CONFIGURATIONS

RRC35-NGK	No Gauge, 35 AMP, Wiring Kits Included
RRC35-60GK	With Gauge, 35 AMP, Wiring Kits Included
RRC35-DDK	Digital Display, 35 AMP, Pressure Switch/Cable and Wiring Kit

## PUMP FITTINGS

(ADDITIONAL CONFIGURATIONS AVAILABLE)

FQ5S-38-R	STRAIGHT, 3/4" QA X 3/8" HB, POLY
FQ5S-12-R	STRAIGHT, 3/4" QA X 1/2" HB, POLY
FQ5S-34-R	STRAIGHT, 3/4" QA X 3/4" HB, POLY
FQ5E-38-R	ELBOW, 3/4" QA X 3/8" HB, POLY
FQ5E-12-R	ELBOW, 3/4" QA X 1/2" HB, POLY
FQ5E-34-R	ELBOW, 3/4" QA X 3/4" HB, POLY
QTS-556	STRAIGHT, 3/4" QA X 1/2" MNPT, POLY
FQ5ME-12-R	ELBOW, 3/4" QA X 1/2" MNPT, POLY
FQ5F-3812	FITTING KIT, INCLUDES STRAIGHT & ELBOW 3/4" QA x 3/8" HB & STRAIGHT 3/4" QA x 1/2" MNPT, POLY
FQ5F-1212	FITTING KIT, INCLUDES STRAIGHT & ELBOW 3/4" QA x 1/2" HB & STRAIGHT 3/4" QA x 1/2" MNPT, POLY
PH-3214-KIT-R	FITTING KIT, INCLUDES 2 STRAIGHT 3/4" QA x 1/2" MNPT & FILTER: 3/4" MQA x 3/4" FQA, POLY



## PUMP FILTERS

(ADDITIONAL CONFIGURATIONS AVAILABLE)

10546-R	1/2" MNPT INLET PORT, 1/2" FNPT INLINE FLITER/STRAINER OUTLET PORT, 50 MESH
25-181-R	3/4" MALE QUICK ATTACH INLET PORT, 3/4" MALE QUICK ATTACH OUTLET PORT, 50 MESH
MF-34F34M-R	3/4" MALE QUICK ATTACH INLET PORT, 3/4" MALE QUICK ATTACH OUTLET PORT, 50 MESH
R-309T153-R	1/2" HOSE BARB INLET PORT, 3/8" MBSP OUTLET PORT, 50 MESH
R-309T253-R	1/2" HOSE BARB INLET PORT, 1/2" MBSP OUTLET PORT, 50 MESH
R-309TB53-R	1/2" HOSE BARB INLET PORT, 3/4" MALE QUICK ATTACH OUTLET PORT, 50 MESH
SS10422T	SUCTION STRAINER INLET PORT, 1/2" FNPT, 50 MESH



## WIRE HARNESSES

(ADDITIONAL CONFIGURATIONS AVAILABLE)

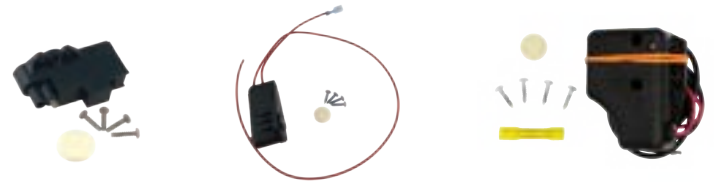
901-001-R	WIRING HARNESS WITH ON-OFF SWITCH, CAR ADAPTER AND 2 PIN CONNECTOR COMBO, 116" LENGTH
901-003-R	WIRING HARNESS TWO 30-AMP BATTERY CLIPS AND 2 PIN CONNECTOR COMBO, 15" LENGTH
901-004-R	WIRING HARNESS WITH ON-OFF SWITCH, TWO 30 AMP BATTERY CLIPS AND 2 PIN CONNECTOR COMBO, 98" LENGTH
901-005-R	WIRING HARNESS WITH ON-OFF SWITCH, 2 PIN CONNECTOR ON BOTH ENDS, 92" LENGTH
901-009-R	WIRING HARNESS KIT, INCLUDES 901-002, 901-003, AND 901-005, 105" LENGTH
901-013-R	WIRING HARNESS 12 AWG, 50 AMP ON/OFF SWITCH, 40 AMP BATTERY CLIPS, BUTT CONNECTORS, 98" LENGTH



## PRESSURE SWITCHES

(ADDITIONAL CONFIGURATIONS AVAILABLE)

3300-PSW	3300 SERIES PUMPS, 45 - 75 PSI
3300-PSW-100	3300 SERIES PUMPS, 80 - 150 PSI
PSW-580R-60	5500 SERIES PUMPS, 45 - 75 PSI
PSW-5100R-80	5500 SERIES PUMPS, 80 - 150 PSI
PSW-FB-60-R	FATBOY SERIES PUMPS, 45 - 75 PSI
PSW-FB-80-R	FATBOY SERIES PUMPS, 80 - 100 PSI
PSW-Z115	ZEUS SERIES, 45 - 75 PSI, 115 VAC
PSWR-Z12	ZEUS SERIES, 45 - 75 PSI, 12 VDC, INCLUDES RELAY
PSWR-Z24	ZEUS SERIES, 45 - 75 PSI, 24 VDC, INCLUDES RELAY
ZSSR-12VDC	SOLID STATE RELAY ONLY, 12 VDC, 50 AMP, WITH MOUNTING SCREWS
ZSSR-24VDC	SOLID STATE RELAY ONLY, 24 VDC, 40 AMP, WITH MOUNTING SCREWS



## REMOTE ON/OFF SWITCHES

901-RC01-R	12 VDC REMOTE ON/OFF SWITCH, 20 AMP
901-RC02-R	2 OR 24 VDC REMOTE ON/OFF SWITCH, 40 AMP



## ZEUS TRANSFER ACCESSORIES

ZMB-001-R	MOUNTING BRACKET - ZEUS TRANSFER KIT, RETAIL
ZTPK-001	ZEUS TRANSFER PLUMBING KIT, RETAIL

## HEATSINKS

50-075	HEAT SINK - 3" MOTORS - 5" X 2.95 DIA
50-075-01	HEAT SINK - 4" MOTORS SHORT, FATBOY
50-075-02	HEAT SINK - 4" MOTORS, ZEUS

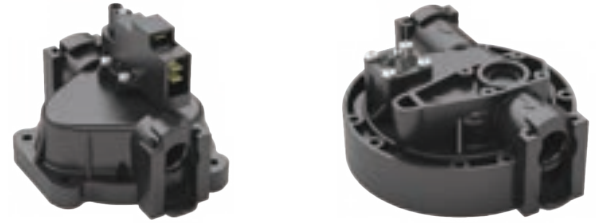


***For parts not listed, please contact the factory for more information***

## UPPER HOUSING ASSEMBLY

(ADDITIONAL CONFIGURATIONS AVAILABLE)

UHA7880-7F77	3300 SERIES, DEMAND, 45 - 75 PSI, 3/8" THREADED
UHA7880-8F77	3300 SERIES, BYPASS, 45 - 75 PSI, 3/8" THREADED
UHA7803-7F77	3300 SERIES, DEMAND, 45 - 75 PSI, 3/4" QUICK ATTACH
UHA7803-8F77	3300 SERIES, BYPASS, 45 - 75 PSI, 3/4" QUICK ATTACH
UHA3203-1X77	3200 SERIES, DEMAND, 45 - 75 PSI, 3/4" QUICK ATTACH
UHA3203-2X77	3200 SERIES, BYPASS, 45 - 75 PSI, 3/4" QUICK ATTACH
UHA5513-1X77	5500 SERIES, DEMAND, 45 - 75 PSI, 1/2" THREADED
UHA5513-2X77	5500 SERIES, BYPASS, 45 - 75 PSI, 1/2" THREADED
UHA5503-1X77	5500 SERIES, DEMAND, 45 - 75 PSI, 3/4" QUICK ATTACH
UHA5503-2X77	5500 SERIES, BYPASS, 45 - 75 PSI, 3/4" QUICK ATTACH



## VALVE HOUSING ASSEMBLY

(ADDITIONAL CONFIGURATIONS AVAILABLE)

VHA7863-7F77	3300 SERIES, VITON
VHA3203-1X77	3200 SERIES, VITON
VHA5513-1E77	5500 SERIES, VITON
VHA-Z95-R	ZEUS SERIES, POLY, SANTO, RETAIL



## COMPLETE THREADED PUMP HEAD ASSEMBLY

(ADDITIONAL CONFIGURATIONS AVAILABLE)

7880-7F77	1.2 GPM, 45-75 PSI, DEMAND, 3/8" FNPT PORTS, VITON, 3300 SERIES
7880-8F77	1.2 GPM, 45-75 PSI, BYPASS, 3/8" FNPT PORTS, VITON, 3300 SERIES
7883-7F77	2.2 GPM, 45-75 PSI, DEMAND, 3/8" FNPT PORTS, VITON, 3300 SERIES
7883-8F77	2.2 GPM, 45-75 PSI, BYPASS, 3/8" FNPT PORTS, VITON, 3300 SERIES
5510-1X77	3.2 GPM, 45-75 PSI, DEMAND, 1/2" FNPT PORTS, VITON, 5500 SERIES
5510-2X77	3.2 GPM, 45-75 PSI, BYPASS, 1/2" FNPT PORTS, VITON, 5500 SERIES
5512-1X77	4.0 GPM, 45-75 PSI, DEMAND, 1/2" FNPT PORTS, VITON, 5500 SERIES
5512-2X77	4.0 GPM, 45-75 PSI, BYPASS, 1/2" FNPT PORTS, VITON, 5500 SERIES
5513-1X77	5.3 GPM, 45-75 PSI, DEMAND, 1/2" FNPT PORTS, VITON, 5500 SERIES
5513-2X77	5.3 GPM, 45-75 PSI, BYPASS, 1/2" FNPT PORTS, VITON, 5500 SERIES
PH-5538E-D	7.0 GPM, 45-75 PSI, DEMAND, 1/2" FNPT PORTS, VITON, FATBOY SERIES
PH-5538E-B	7.0 GPM, 45-75 PSI, BYPASS, 1/2" FNPT PORTS, VITON, FATBOY SERIES
PH-5538I-D	7.0 GPM, 80+ PSI, DEMAND, 1/2" FNPT PORTS, VITON, FATBOY SERIES
PH-5538I-B	7.0 GPM, 80+ PSI, BYPASS, 1/2" FNPT PORTS, VITON, FATBOY SERIES
3903-5X77	2.2 GPM, 60 PSI, FLO IQ, 3/8" FNPT PORTS, VITON, SMOOTHFLO
99A2-2C27	14 GPM, 40 PSI, BYPASS, 1" FNPT PORTS, SANTOPRENE, ZEUS TRANSFER SERIES
99A2-1E27	14 GPM, 60 PSI, DEMAND, 1" FNPT PORTS, SANTOPRENE, ZEUS SERIES
99A2-2E27	14 GPM, 60 PSI, BYPASS, 1" FNPT PORTS, SANTOPRENE, ZEUS SERIES
99A2-5G27	14 GPM, 150 PSI, FLO-IQ, 1" FNPT PORTS, ZEUS SERIES



## COMPLETE QUICK ATTACH PUMP HEAD ASSEMBLY

(ADDITIONAL CONFIGURATIONS AVAILABLE)

7803-7F77	2.2 GPM, 45-75 PSI, DEMAND, 3/4" QA PORTS, 3300 SERIES
7803-8F77	2.2 GPM, 100 PSI, BYPASS, 3/4" QA PORTS, 3300 SERIES
3203-1F77	3.2 GPM, 45-75 PSI, DEMAND, 3/4" QA PORTS, 3200 SERIES
5500-1X77	3.2 GPM, 45-75 PSI, DEMAND, 3/4" QA PORTS, 5500 SERIES
5500-2X77	3.2 GPM, 45-75 PSI, BYPASS, 3/4" QA PORTS, 5500 SERIES
5502-1X77	4.0 GPM, 45-75 PSI, DEMAND, 3/4" QA PORTS, 5500 SERIES
5502-2X77	4.0 GPM, 45-75 PSI, BYPASS, 3/4" QA PORTS, 5500 SERIES
5503-1X77	5.3 GPM, 45-75 PSI, DEMAND, 3/4" QA PORTS, 5500 SERIES
5503-2X77	5.3 GPM, 45-75 PSI, BYPASS, 3/4" QA PORTS, 5500 SERIES
PH-5518E-D	7.0 GPM, 45-75 PSI, DEMAND, 3/4" QA PORTS, FATBOY SERIES
PH-5518E-B	7.0 GPM, 45-75 PSI, BYPASS, 3/4" QA PORTS, FATBOY SERIES
PH-5518I-D	7.0 GPM, 80+ PSI, DEMAND, 3/4" QA PORTS, FATBOY SERIES
PH-5518I-B	7.0 GPM, 80+ PSI, BYPASS, 3/4" QA PORTS, FATBOY SERIES
5917-9I77	5.3 GPM, 100 PSI, FLO-IQ, 3/4" QA PORTS, SMOOTHFLO
5918-9I77	7.0 GPM, 100 PSI, FLO-IQ, 3/4" QA PORTS, SMOOTHFLO



*For parts not listed, please contact the factory for more information*

## **STANDARD WARRANTY**

---

REMCO™ warrants its products to be free from defects in material and workmanship on all products sold by REMCO™ for resale or for use in purchasers' own business or original equipment manufacturer. Under normal use, maintenance and service (rental use excluded) the following terms apply:

For all REMCO™ products, the warranty will last for a period of one (1) year from date of manufacture, or one (1) year use with proof of purchase, with the exception of the Aquajet® pumps, which is two (2) years. REMCO's™ obligation under this warranty shall be limited to replacing or repairing, at REMCO's™ discretion, any such product or part which must be returned to the REMCO™ factory with a Return Material Authorization number (RMA), transportation charges approved by REMCO™ or prepaid, and which, upon examination, is found to REMCO's™ satisfaction to have been defective under the terms of this warranty. No credit will be allowed against future purchases for items returned as defective under the terms of REMCO's™ warranty. REMCO™ warrants all pump series to be free from material and workmanship defects (under normal use and service) for a period of one (1) year from the date of manufacture, or one (1) year use with proof of purchase, with the exception of the Aquajet® pumps, which is two (2) years. This warranty does not extend to any products which have been altered or modified outside the REMCO™ factory; to any products that have not been properly maintained; nor to units that are returned in an unassembled condition. Furthermore, the warranty does not extend to pumps that are non-compliant with REMCO™ Engineering Standards. This includes, but is not limited to, pumps ordered without an integral pressure control mechanism. The warranty guarantees that products will perform to REMCO™ flow and pressure specifications throughout the life of the warranty. The warranty does not cover wear, appearance, misuse, abuse, misapplication or external water damage. If the returned product is found not to be defective under the conditions of this warranty, a charge will be made for repair or replacement.

Brush wear may be limited to 1000 hours or less.

This is a Limited Warranty. It covers the product only and the extent of the coverage is limited to the cost of the product. As the manufacturer has no control over shipping, handling and installation, the warranty cannot cover water damage, or any other damage, caused by a leak or other malfunction.

**THIS WARRANTY IS IN LIEU OF ALL WARRANTIES, EXPRESSED OR IMPLIED, INCLUDING IMPLIED WARRANTIES OR WARRANTIES OF MERCHANTABILITY AND/OR FITNESS FOR A PARTICULAR PURPOSE. NO PERSON IS AUTHORIZED TO GIVE ANY OTHER WARRANTY OR ASSUME OBLIGATION OR LIABILITY ON REMCO'S™ BEHALF. REMCO™ SHALL NOT BE LIABLE FOR ANY INDIRECT, INCIDENTAL, PUNITIVE OR CONSEQUENTIAL DAMAGES OF ANY KIND INCURRED BY THE REASON OF THE USE OR SALE OF ANY DEFECTIVE PRODUCT AND PART. THIS WARRANTY SHALL BE GOVERNED BY THE LAWS OF THE STATE OF MINNESOTA, WITH ANY DISPUTE OR CLAIM VENUED OR HEARD IN THE STATE OF MINNESOTA.**