

# Operating Instructions

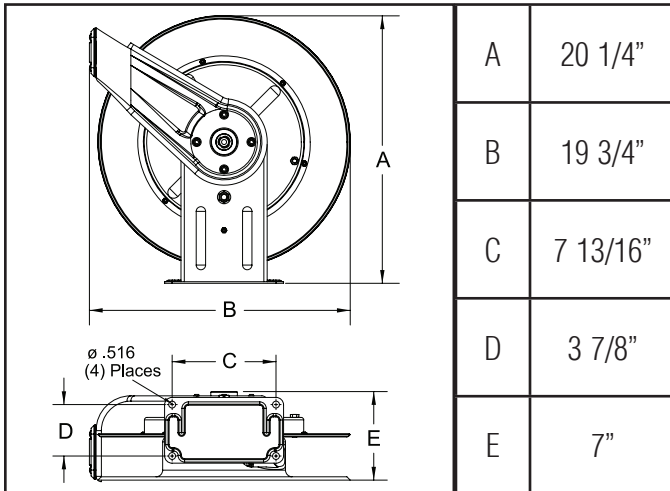
## Series 7000 Spring Driven Hose Reels

Low Pressure Model Numbers:

GC7535 OLP



### Dimensions



### SAFETY

1. Do not use reel at higher pressures or temperatures than listed on the back of this bulletin.
2. Remove all spring tension before beginning dissassembly process.

### INSTALLATION:

A flexible hose connection must be used between the hose reel inlet and the source of supply to prevent possible misalignment and binding.

### MOUNTING:

The hose reel is equipped with a universal mounting bracket so that it can be mounted on the floor, wall or ceiling; whichever place is convenient. The hose guide arm can be moved to the position desired by removing the screws fastening the guide bracket to the reel base. Shift the guide arm bracket so the hose comes off the reel at the desired position and replace the screws.

### LUBRICATION:

Hose reel spring and bearings are factory lubricated and require no further lubrication.

### REPLACING HOSE:

1. Wind spool flange clockwise-facing swivel-until spring is tight.
2. Back off three turns and latch.
3. Insert hose through roller guide.
4. Connect hose fitting to swivel joint and secure hose with clamps.

### ADJUSTMENTS:

To adjust spring tension, add or remove wraps of hose from the spool, one wrap at a time until desired tension is obtained.

### REPAIRS:

Extensive repairs should be performed only by an authorized serviceman or factory to avoid damage which may void your warranty. Remove all spring tension before beginning disassembly process.

Form# 1137-203 Rev: 7/2025



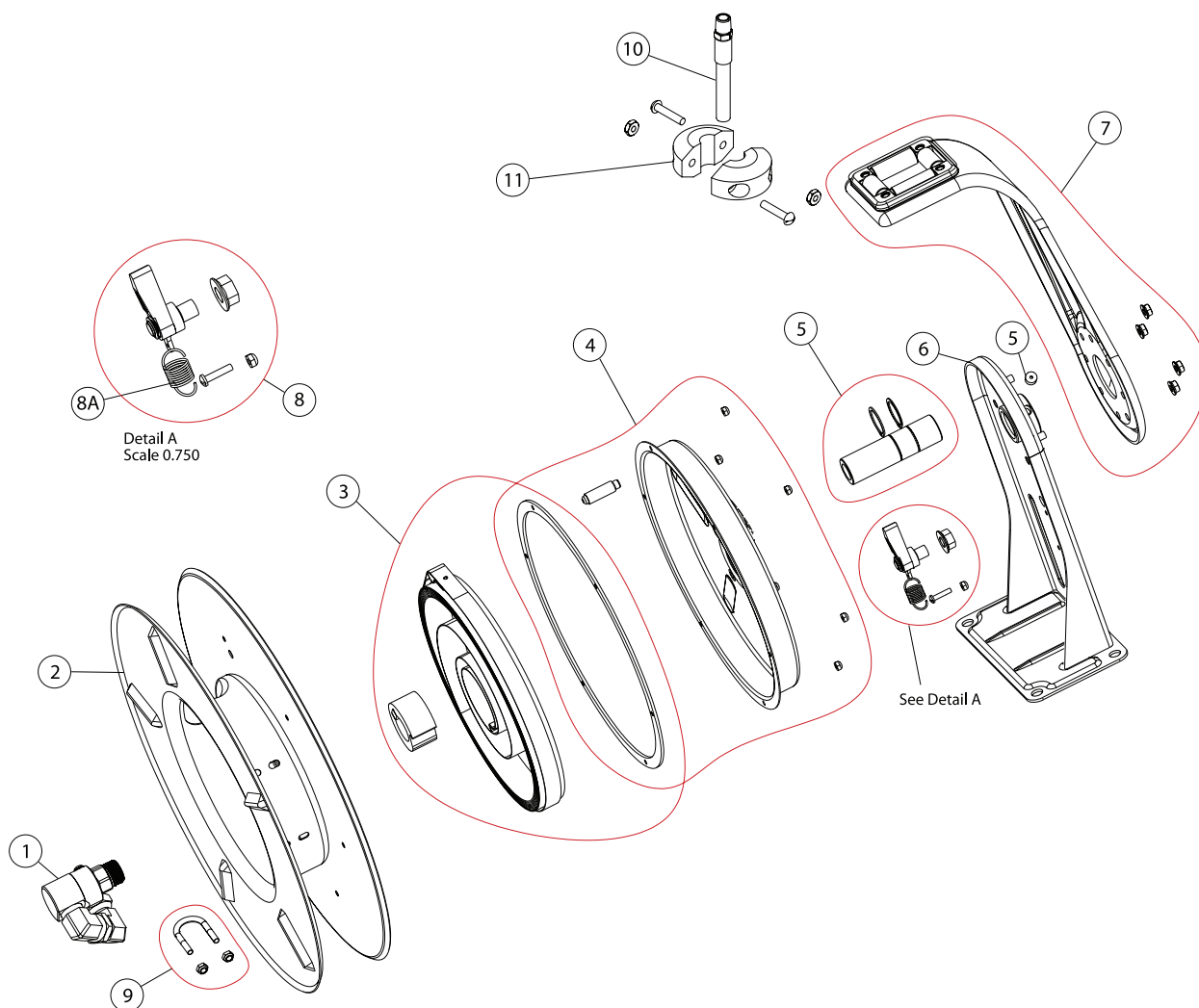
John M. Ellsworth Co., Inc.

P.O. Box 240072  
8700 West Bradley Road  
Milwaukee, WI 53224

800-333-3331 **PHONE**

info@jmesales.com **E-MAIL**  
www.JMEsales.com **WEB**

## Series 7000 Spring Driven Hose Reels



| ITEM | DESCRIPTION                     | QTY. | PART #    |
|------|---------------------------------|------|-----------|
| 1    | Swivel Kit                      | 1    | S600242   |
| 2    | Sheave Kit                      | 1    | S260011   |
|      | Sheave Assembly                 | 1    |           |
| 3    | Drive Spring Gasket & Arbor Kit | 1    | S600023   |
|      | Drive Spring Assembly           | 1    |           |
|      | Spring Case Gasket              | 1    |           |
|      | Spring Arbor                    | 1    |           |
|      | Spring Arbor Key                | 1    |           |
| 4    | Spring Cover Kit                | 1    | S260074   |
|      | Spring Case Gasket              | 1    |           |
|      | Spring Case Gasket              | 1    |           |
|      | 10-32 Nyloc Nut                 | 6    |           |
|      | Spring Case Stud                | 1    |           |
|      | 3/8-24 Hax Jam Nut              | 1    |           |
| 5    | Shaft Kit                       | 1    | S602231-1 |
|      | Main Shaft & Snap Ring          | 1    |           |
|      | Snap Ring                       | 1    |           |
|      | Set Screw                       | 1    |           |

| ITEM | DESCRIPTION                   | QTY. | PART #     |
|------|-------------------------------|------|------------|
| 6    | Base Assembly                 | 1    | S602842    |
| 7    | Guide Arm Kit                 | 1    | S600017    |
|      | Guide Arm Assembly            | 1    |            |
|      | 5/16-18 Whiz Lock Nut         | 4    |            |
| 8    | Latch Kit                     | 1    | S602299    |
|      | Latch Assembly                | 1    |            |
|      | 10-32 2A Shoulder Screw       | 1    |            |
|      | Latch Spring                  | 1    |            |
|      | 1/2-20 Flange Nut             | 1    |            |
|      | 10-32 Nyloc Nut               | 1    |            |
| 8A   | Latch Spring                  | 1    | S260067    |
| 9    | U-Bolt Kit                    | 1    | S5-117440  |
|      | U-Bolt                        | 1    |            |
|      | 1/4-20 Hex Flange Nyloc Nut   | 2    |            |
| 10   | Hose Assembly                 | 1    | 601046-35  |
| 11   | Bumper Assembly               | 1    | S600838    |
| ---  | Garden Hose Valve (not shown) | 1    | S261447    |
| ---  | Inlet Hose (not shown)        | 1    | S600830-10 |