

# Operating Instructions

## Series C Pressure Wash Hose Reel

Model Numbers:

CA6000 H

### Specifications:

	CA6000 H	
Capacity	1/4" x 100'	3/8" x 50'
Reel Inlet	3/8" NPT Female	3/8" NPT Female
Hose Outlet	1/4" NPT Female	1/4" NPT Female
Max Pressure	5000 PSI	5000 PSI



### Safety

Personal injury and/or equipment damage may result if proper safety precautions are not observed.

- Ensure that the reel has been properly installed before connecting supply line (see installation instructions).
- Bleed fluid/gas pressure from system before servicing reel.
- Before connecting reel to supply line ensure that supply line pressure does not exceed maximum rated working pressure of reel.
- Do not wear loose fitting clothing while operating reel.
- Be aware of other personnel and machinery in work area.
- If a leak occurs in the hose or reel, remove supply line pressure immediately.
- Treat and respect the reel as any other piece of machinery, observing all common safety practices.
- Other than replacing the hoses, refer all other repairs only to an authorized service person or directly to Reelcraft. Failure to do so may void the warranty.

### Dimensions

	in	mm	
<b>A</b>	12 7/8	326	
<b>B</b>	12	305	
<b>C</b>	6 7/8	173	
<b>D</b>	4	102	
<b>E</b>	6 7/8	173	
<b>F</b>	9 3/4	248	
<b>G</b>	3	76	
<b>H</b>	6 1/2	165	
<b>I</b>	7 1/8	181	

Form# 1319-1024 Rev: 11/2024



John M. Ellsworth Co., Inc.

P.O. Box 240072  
8700 West Bradley Road  
Milwaukee, WI 53224

800-333-3331 **PHONE**

info@jmesales.com **E-MAIL**  
www.JMEsales.com **WEB**

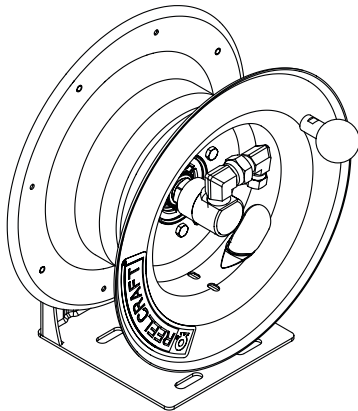
### INSTALLATION INSTRUCTIONS

#### Inspection

Unpack and inspect the reel for damage. Turn the reel by hand to check for smooth operation. Check for completeness.

#### Mounting of all Hose Reels

**NOTE:** Ensure that mounting surface is flat to prevent binding on reel after it is mounted.



#### Connecting the Hose

**CAUTION:** Do not connect the hose to the connecting tube assembly until after hose reel has been installed. Fully extend and charge hose before winding on to reel. Momentarily open control valve, when initially charging, to purge hose of gases.

When fluid appears at control valve, close valve. This prevents flattening of the hose and excessive pressure on the drum when fluid supply is reinitialized at a later time.

1. Apply thread compound to all threads.
2. Hand thread male hose connector into connecting tube assembly.
3. Using a wrench, firmly hold onto connecting tube assembly while tightening hose connector.

### SERVICE INSTRUCTIONS

#### Replacing the Hose

1. Using the wrench, firmly hold onto the connecting tube assembly while removing hose connector.
2. Follow procedures for "Connecting the hose" (refer to installation instructions).

#### Replacing the Swivel

**CAUTION:** Remove supply line pressure before performing the following procedure.

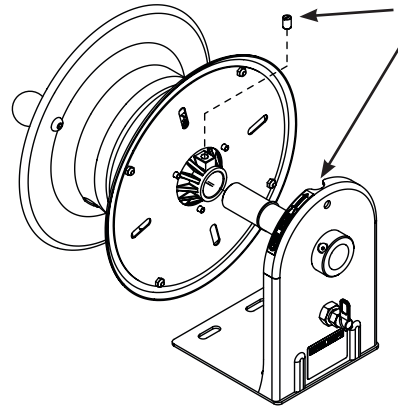
1. Remove supply line from swivel.
2. Remove swivel assembly from inlet shaft.
3. Install swivel assembly to inlet shaft by reversing steps 1 and 2.

Apply thread compound to all threads.

### ADJUSTMENT PROCEDURES

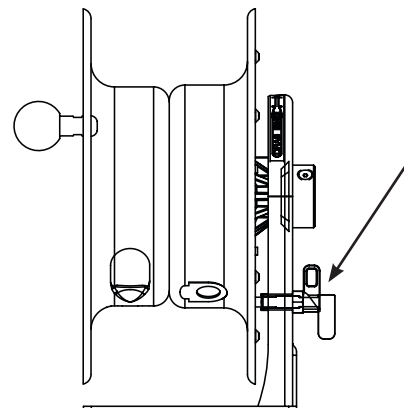
#### Adjusting the Reel

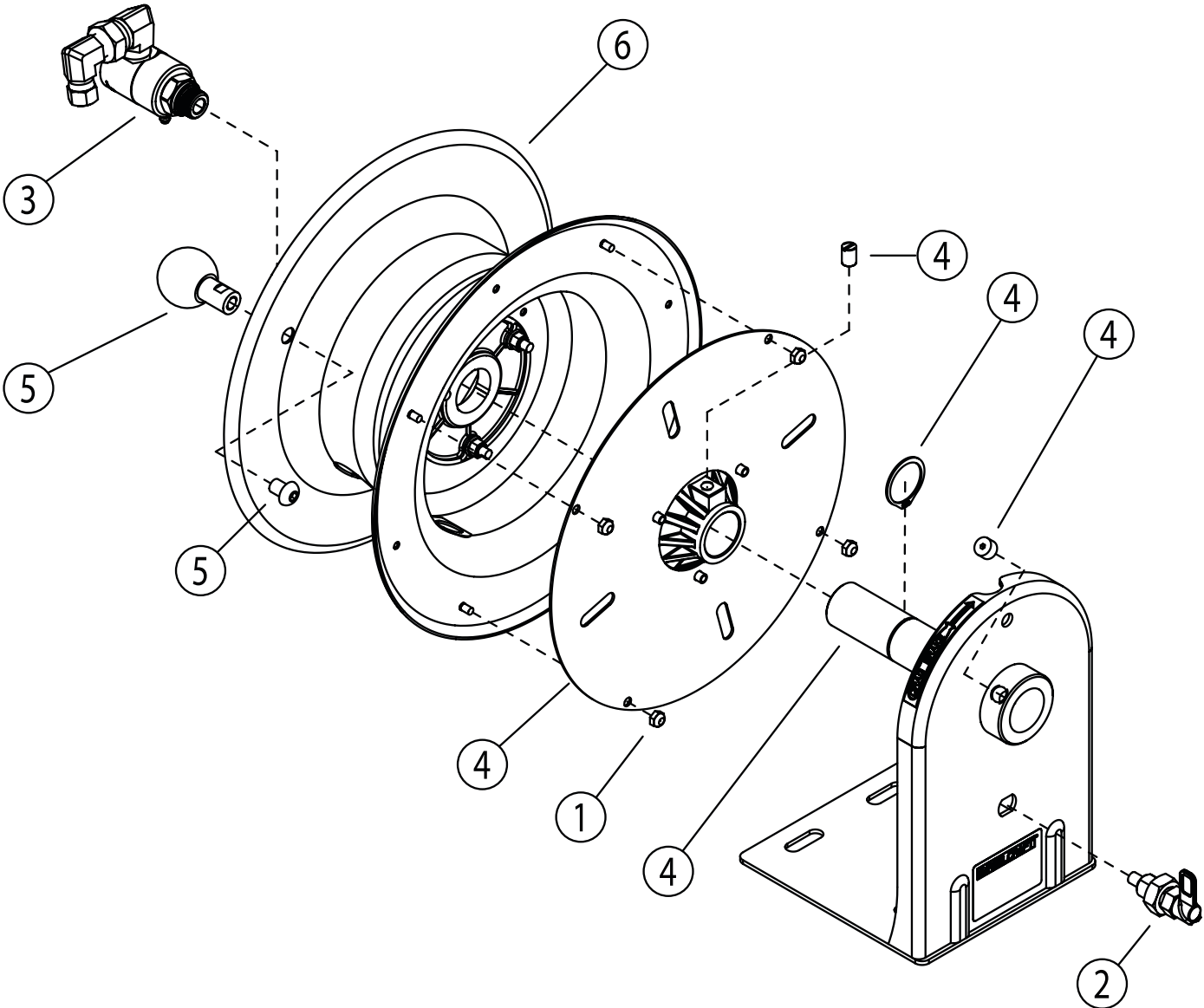
1. Adjust reel drag by loosening or tightening set screw on hub on reel.



#### Pin Lock Operation

Toggle the lock into the 6 o'clock position to disengage. When hose is recoiled and you are ready to lock into position, turn lock and rotate reel up to a 1/4 turn to let the plunger lock spool into place.





ITEM	Part #	Description
1	S602946	Hardware Kit
2	S602945	Lock Pin Kit
3	S602937	Swivel Kit
4	S602947	Shaft Kit
5	S602944	Handle Kit
6	S602934-35	Spool Kit