

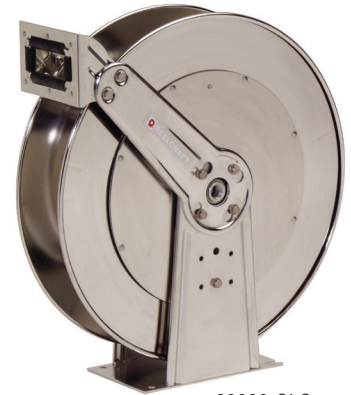
Stainless Steel Hose Reels

Air/Water/Oil - 3/8", 1/2", 3/4", 1" I.D.

- Constructed from electropolished 304L stainless steel
- Ideal for food processing, pre-rinse, wash down, chemical transfer, and industrial-solvent handling
- Stainless steel components offer the maximum protection from premature corrosion
- Suitable for coastal, offshore, and on-board ships in marine applications where the harsh environment requires the use of stainless steel
- Swivel seals include FKM O-rings (7600 OMS55 includes EPR O-rings)



7800 OLS



83000 OLS

Spring Retractable Reels Note: Standard latch parts are made from aluminum. Series 80000 and D80000 stainless reels have an aluminum fluid path. The -S models include stainless latch parts and fluid path (OLS-S).

Manual Crank Reels Note: The Series HS models include aluminum hubs and bronze bushings.

Model without hose & bumper	Shipping Weight		Hose Capacity				Max Pressure	NPT(F) Reel Inlet	NPT(F) Reel Outlet	Size Index Page	Size Index #			
	lbs	kg	I.D.		O.D.							Length		
			in	mm	in	mm	ft	m	psi	bar	in	in		
Spring Retractable Low Pressure Air/Water Reels Maximum Temperature 210 °F (99 °C)														
81000 OLS-S	77	35	3/8	10	.600	15	100	30	500	35	1/2	1/2	14	1
7800 OLS ★	41	19	1/2	13	.750	19	50	15	500	35	1/2	1/2	12	---
7800 OLS-S	41	19	1/2	13	.750	19	50	15	500	35	1/2	1/2	12	---
82000 OLS	81	37	1/2	13	.750	19	100	30	500	35	1/2	1/2	14	1
82000 OLS-S	81	37	1/2	13	.750	19	100	30	500	35	1/2	1/2	14	1
83000 OLS ★	81	37	3/4	19	1.188	30	50	15	500	35	3/4	3/4	14	1
83000 OLS-S	81	37	3/4	19	1.188	30	50	15	500	35	3/4	3/4	14	1
D83000 OLS	84	38	3/4	19	1.188	30	75	23	500	35	3/4	3/4	14	2
D83000 OLS-S	84	38	3/4	19	1.188	30	75	23	500	35	3/4	3/4	14	2
D84000 OLS	92	42	1	25	1.375	35	50	15	500	35	1	1	14	3
D84000 OLS-S	92	42	1	25	1.375	35	50	15	500	35	1	1	14	3
Spring Retractable Medium Pressure Oil Reels Maximum Temperature 210 °F (99 °C)														
7600 OMS55	42	19	3/8	10	.710	18	66	20	3000	207	3/8	3/8	12	---
81000 OMS-S	83	38	3/8	10	.710	18	100	30	1500	103	1/2	1/2	14	1
7800 OMS	43	20	1/2	13	.850	22	50	15	3000	207	1/2	1/2	12	---

Models with a ★ icon are our most popular models.



Hose Assemblies & Bumper Stops
See pages 36-37



HS18000 M

Model without hose & bumper	Shipping Weight		Pressure	NPT(F) Outlet	NPT(F) Inlet	I.D.	1/4		3/8		1/2		3/4		---		
	lbs	kg					psi	bar	in	in	in	in	in	in	in	in	in
Hand Crank Medium Pressure Reels Maximum temperature 210 °F (99 °C)																	
HS18000 M	36	16	3000	207	1/2	1/2	Hose Capacity	425	130	300	91	200	61	---	---	---	---
HS19000 M	38	17	3000	207	3/4	3/4		425	130	300	91	200	61	75	23	---	---

Refer to reelcraft.com for dimensions.



John M. Ellsworth Co., Inc.

P.O. Box 240072
8700 West Bradley Road
Milwaukee, WI 53224

800-333-3331 **PHONE**

info@jmesales.com **E-MAIL**
www.JMEsales.com **WEB**