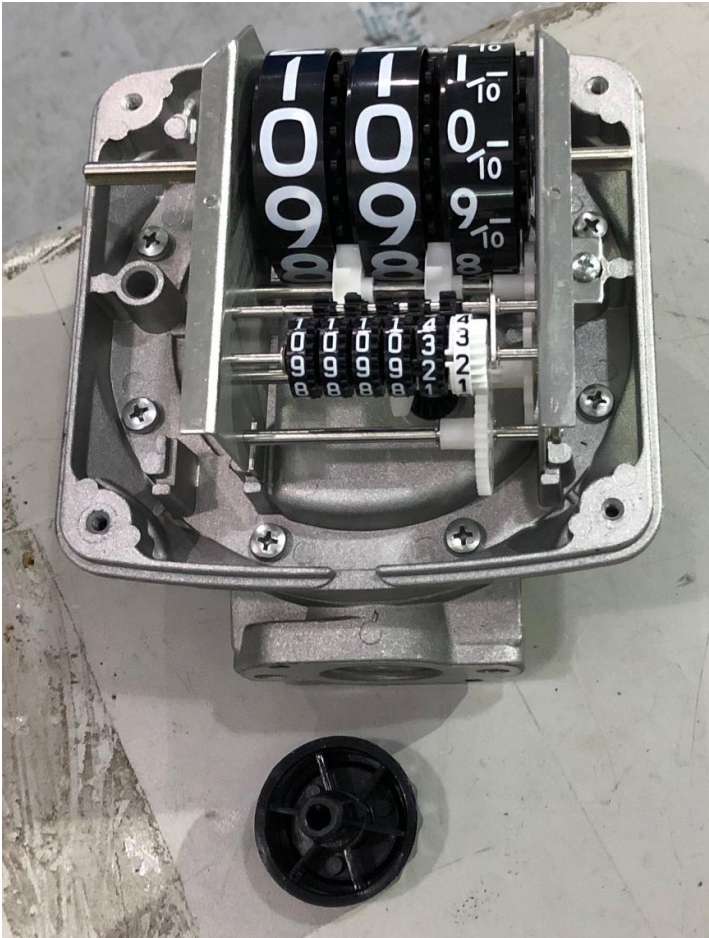




Step 1: Remove four screws from meter face cover



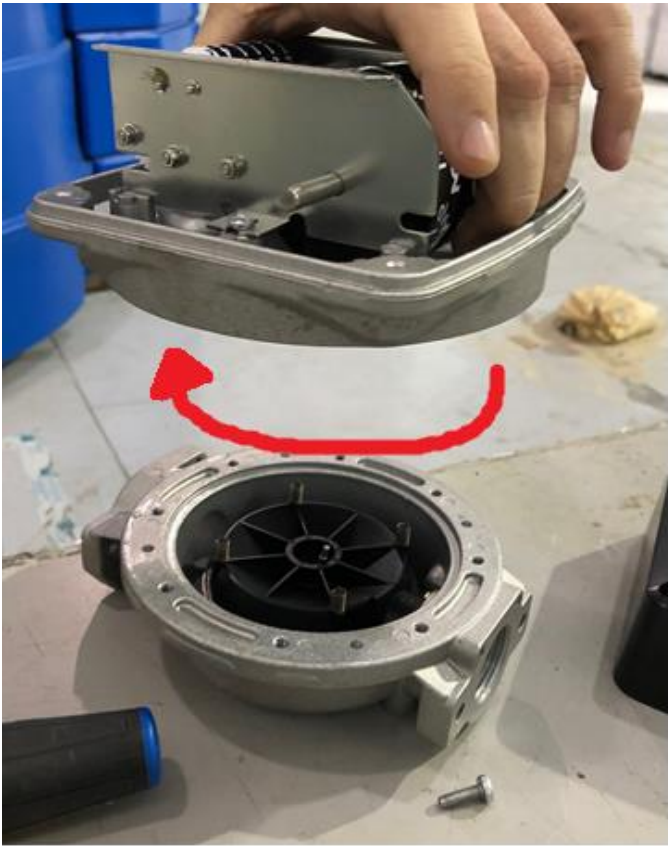
Step 2: Pull of dial knob (with hand)



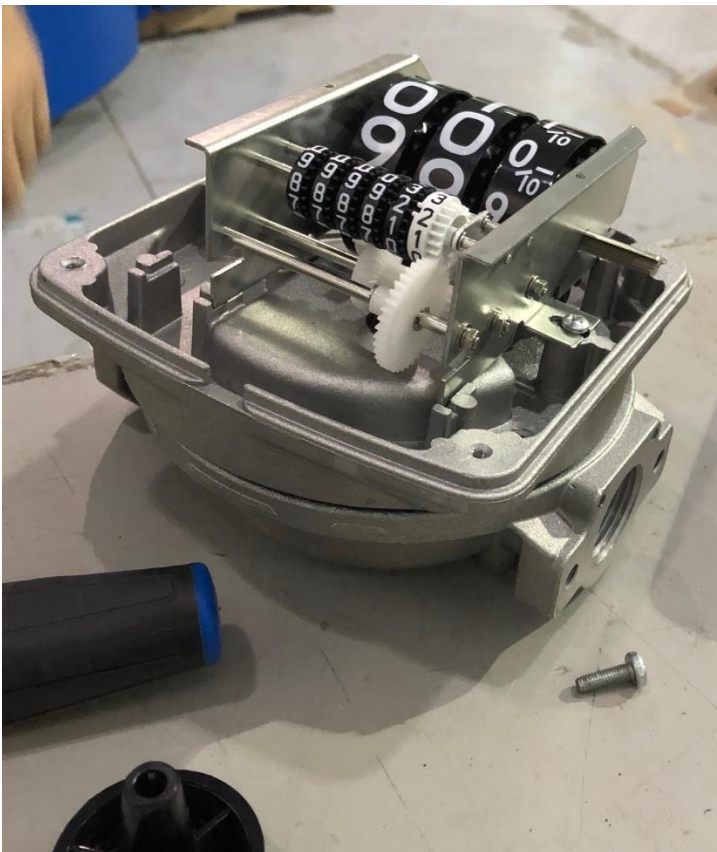
Step 3: Remove face cover



Step 4: remove eight screws holding register assembly to meter body



Step 5: Lift and rotate register assembly to desired position



Step 6: Reassemble (screw in eight screws, put on face cover, screw in four screws to face cover and press dial knob back into place)