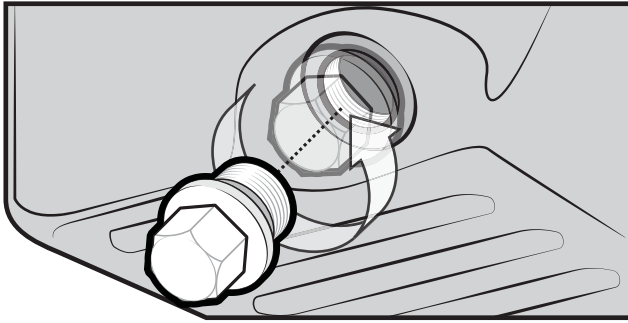


INSTALLATION INSTRUCTIONS

**no
spill**
SYSTEMS
Fluid Draining Technology

1

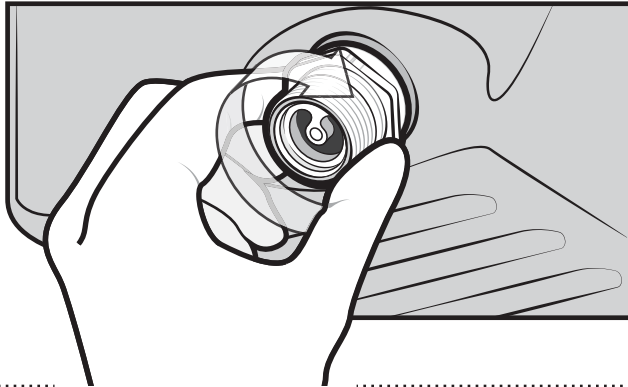


REMOVE THE FACTORY
DRAIN PLUG FROM YOUR
OIL PAN.



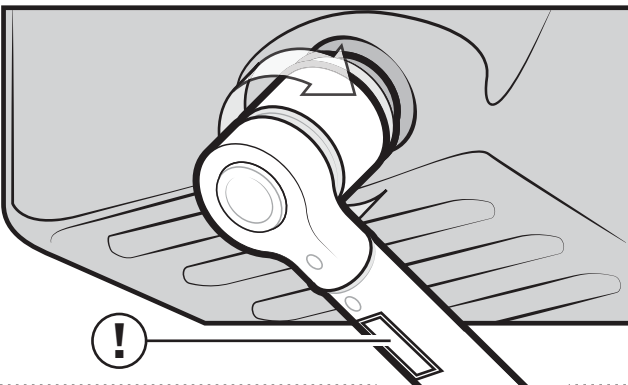
CLEAN OUT THE OIL
PAN THREADS WITH A
CLOTH AND BRUSH TO
ENSURE THERE IS NO
DEBRIS LEFT IN THE OIL
PAN THREADS.

2



THREAD IN THE NO-SPILL™ DRAIN PLUG BY
HAND UNTIL SLIGHTLY SNUG.

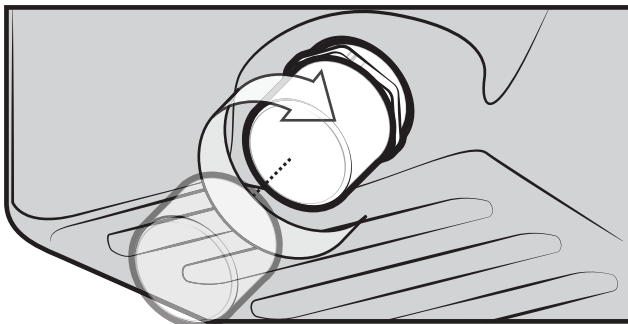
3



USE A TORQUE WRENCH TO TIGHTEN THE
NO-SPILL™ PLUG TO THE TORQUE SPECIFIED
ON THE PRODUCT CONTAINER.

PLEASE NOTE: THE SMALLER DIAMETER
PLUGS REQUIRE A VERY LOW TORQUE. IT IS
IMPORTANT TO USE A WELL-CALIBRATED
TORQUE WRENCH AND TO TIGHTEN THE
PLUG TO THE FOOT POUNDS SPECIFIED.

4



YOUR **NO-SPILL™ DRAIN PLUG** IS
NOW READY TO USE FOR YOUR
NEXT OIL CHANGE.



John M. Ellsworth Co., Inc.

P.O. Box 240072
8700 West Bradley Road
Milwaukee, WI 53224

800-333-3331 **PHONE**

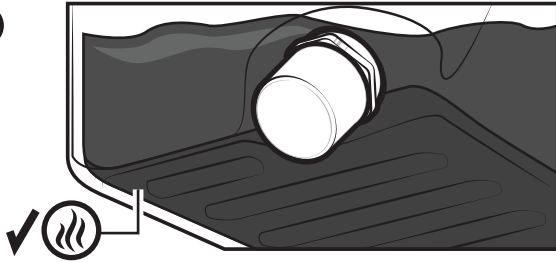
info@jmesales.com **E-MAIL**
www.JMEsales.com **WEB**

DRAINING INSTRUCTIONS

STANDARD AND COMPACT DESIGN NO-SPILL™ DRAIN PLUG

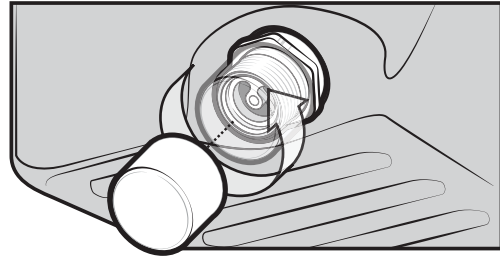
**no.
spill**
SYSTEMS

1



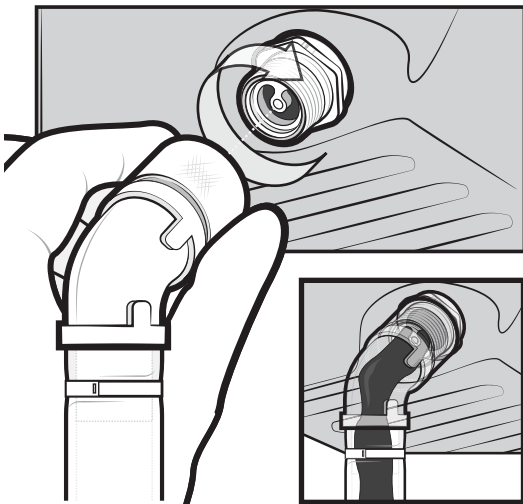
TO TAKE FULL ADVANTAGE OF MAXIMUM FLOW RATES, BE SURE TO DRAIN YOUR OIL WHEN IT IS HOT.

2



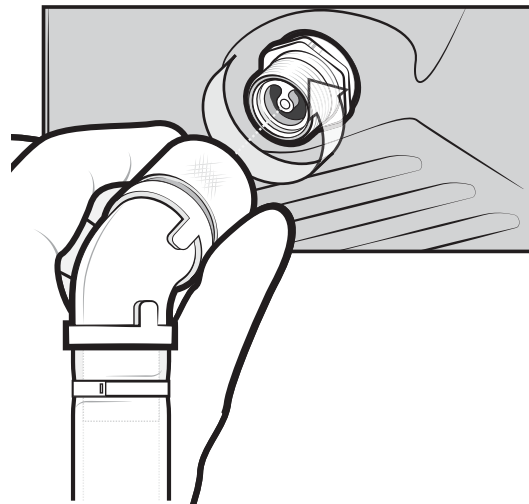
REMOVE THE DUST CAP FROM THE BASE OF THE PLUG.

3



THREAD ON THE DRAINER TO RELEASE THE VALVE, AND TO ALLOW THE WASTE OIL TO FLOW FREELY.

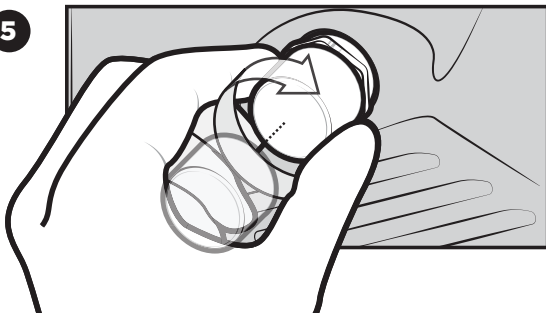
4



REMOVE THE DRAINER.

UNTHREADING THE DRAINER WILL CLOSE THE INTERNAL DRAIN PLUG VALVE.

5



REPLACE THE DUST CAP UNTIL IT IS HAND-TIGHT.

SPECIAL TOOLS OR TORQUE WRENCHES ARE UNNECESSARY.