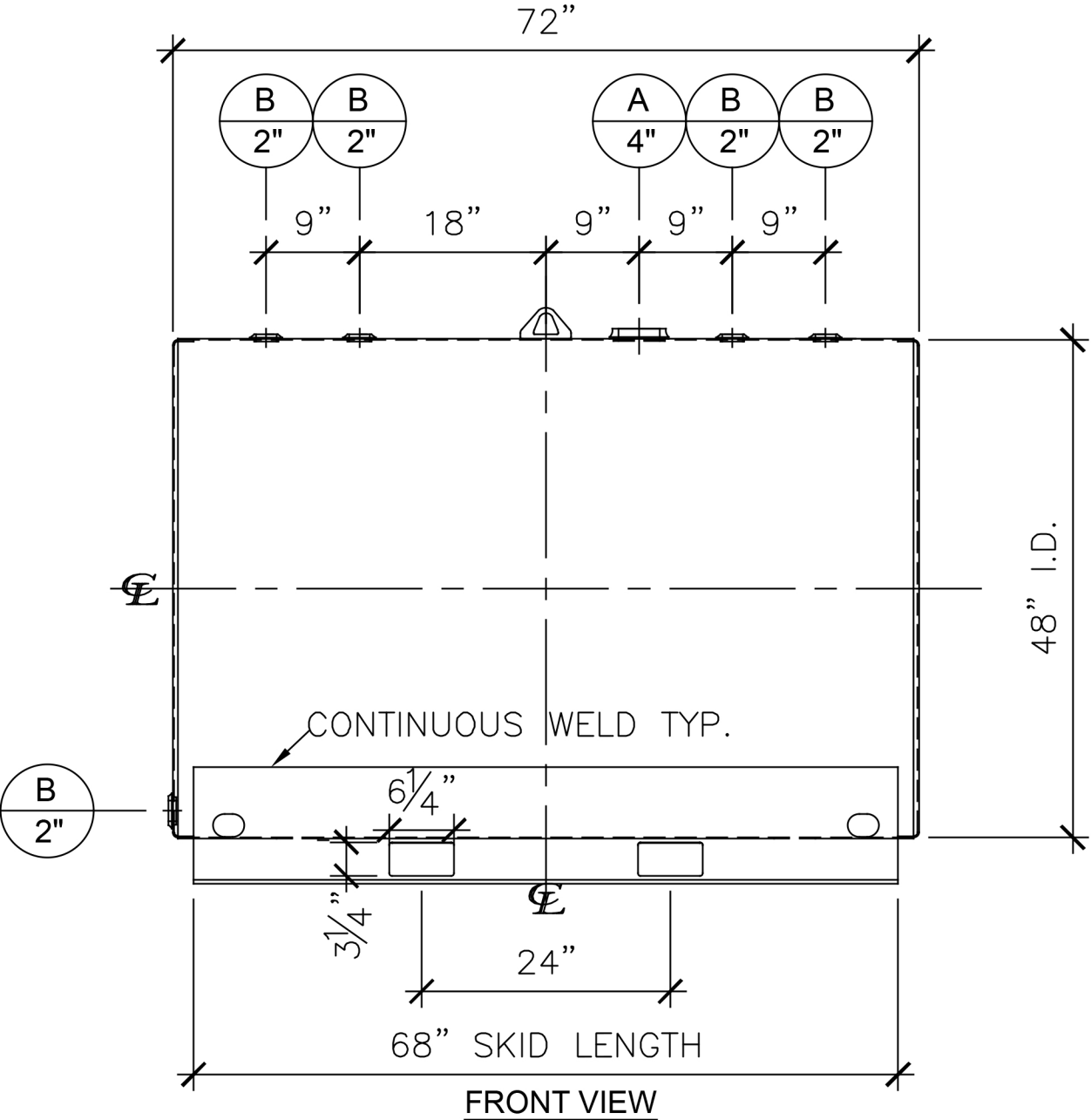
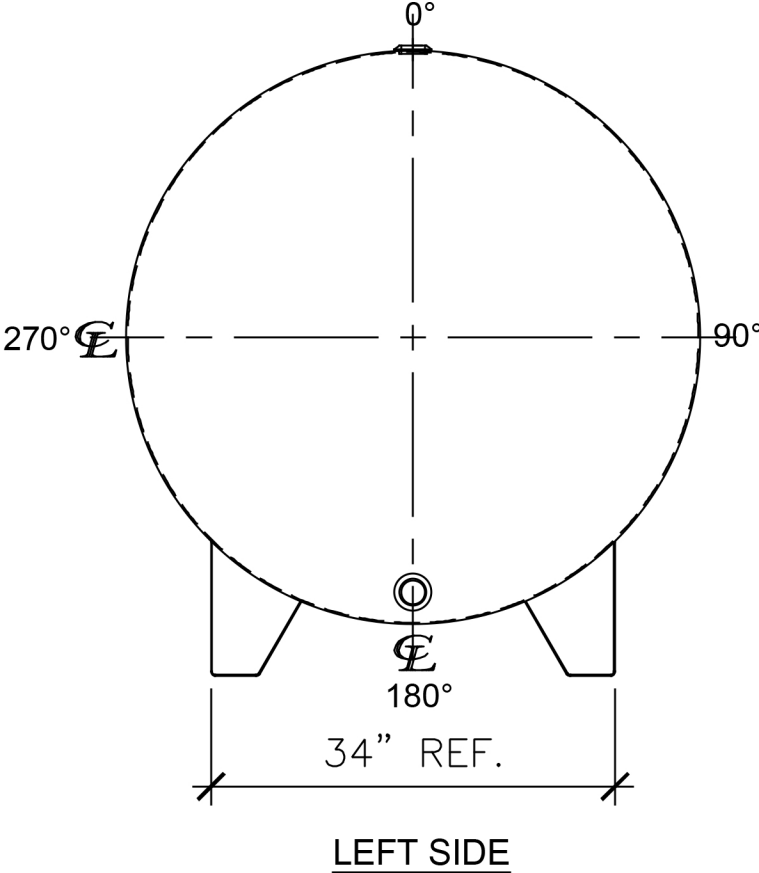


NOZZLE SCHEDULE								
ITEM	SIZE	RATING	TYPE	MATL	PROJ. IN	PROJ. OUT	REMARKS	NOTES
A	4"	N.P.T.	W.F.	C.S.	STD.	STD.	EMERGENCY VENT OPENING	-
B	2"	N.P.T.	W.F.	C.S.	STD.	STD.	-	-



- NOTES:
- A. Quantity:
  - B. Material: H.R. Carbon Steel.
  - C. Design Pressure: Atmospheric.
  - D. Design Temperature: Ambient.
  - E. Built & labeled per U.L. spec. #142.
  - F. Exterior: Gray primer included; see Sales Order for top coat.
  - G. All fittings to be protected for shipment.
  - H. Customer to verify nozzle sizes, locations and quantities.
  - I. Saddles/skids may require shimming or grouting during installation.

<b>APPROVAL FOR CONSTRUCTION</b> SCHEDULE A - MASTER TERMS & CONDITIONS OF SALE*		<b>JME ELLSWORTH</b> <small>A John M. Ellsworth Company</small>	
<input type="checkbox"/> APPROVED AS DRAWN.		VESSEL DESCRIPTION: 550 Gallon 48" I.D. x 6'-0" O.A.L. Single Wall Skid Tank	
<input type="checkbox"/> APPROVED WITH NOTED CHANGES, CONSTRUCTION WILL BE SCHEDULED WHEN SIGNED DRAWING AND CONFIRMED ORDER ARE RECEIVED.		CUSTOMER: _____ P.O.# _____	
SIGNATURE: _____		DATE: _____	
DATE: _____		SCALE: _____	DWG.# NENB00550SWS048012G
		CHKD. BY: _____	DRAWN BY: AG
			TF