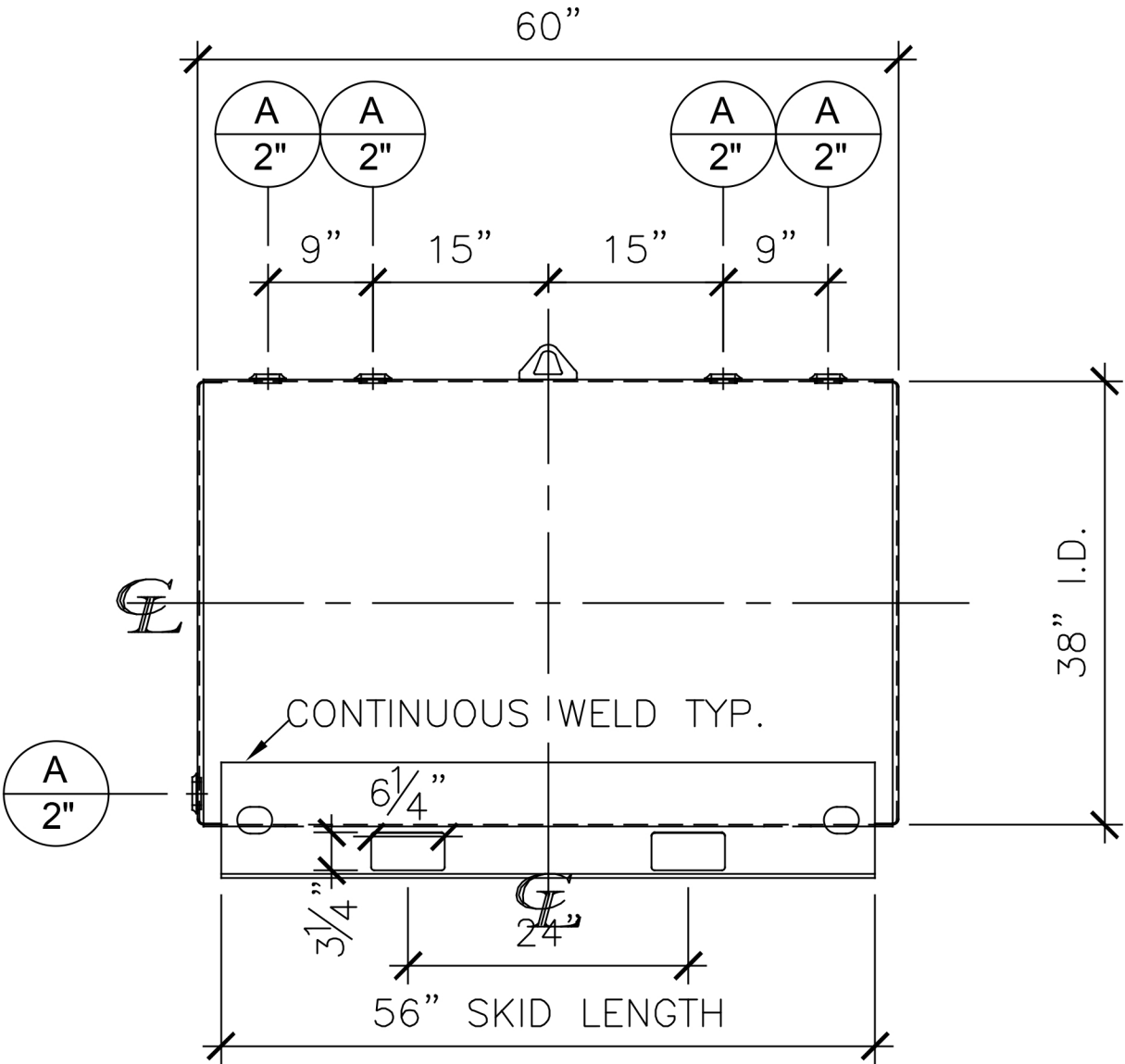


LEFT SIDE

NOZZLE SCHEDULE						
ITEM	SIZE	RATING	TYPE	MATL	REMARKS	NOTES
A	2"	N.P.T.	W.F.	C.S.		



FRONT VIEW

NOTES:

- A. Quantity:
- B. Material: H.R. Carbon Steel.
- C. Design Pressure: Atmospheric.
- D. Design Temperature: Ambient.
- E. Exterior: Gray primer included; see Sales Order for top coat.
- F. All Fittings to be protected for shipment.
- G. Customer to verify nozzle sizes, locations and quantities.
- H. Saddles/skids may require shimming or grouting during installation.

APPROVAL FOR CONSTRUCTION
SCHEDULE A - MASTER TERMS &
CONDITIONS OF SALE*

- ☐ APPROVED AS DRAWN.
- ☐ APPROVED WITH NOTED CHANGES,
CONSTRUCTION WILL BE SCHEDULED
WHEN SIGNED DRAWING AND
CONFIRMED ORDER ARE RECEIVED.

SIGNATURE _____
DATE: _____



VESSEL DESCRIPTION: 300 Gallon 38" I.D. x 5'-0" O.A.L. Single Wall Agricultural Skid Tank			
CUSTOMER: -		P.O.#	
DATE: -	SCALE:	DWG.# NENB00300FTS03812G	DRAWN BY: AG CHKD. BY: TF