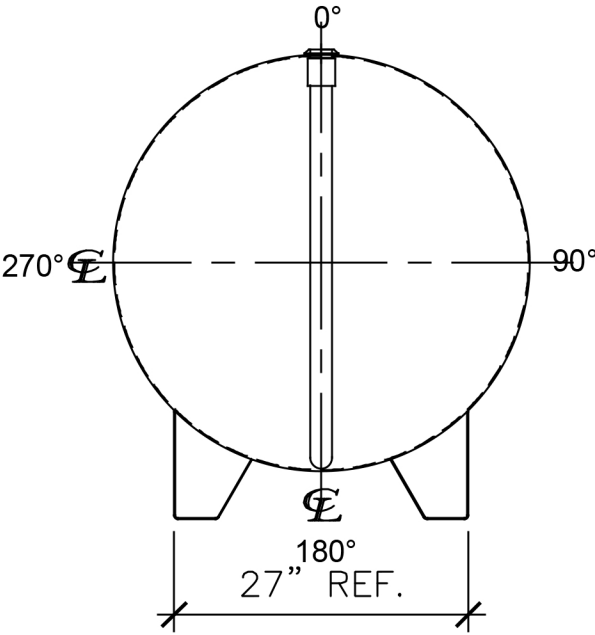
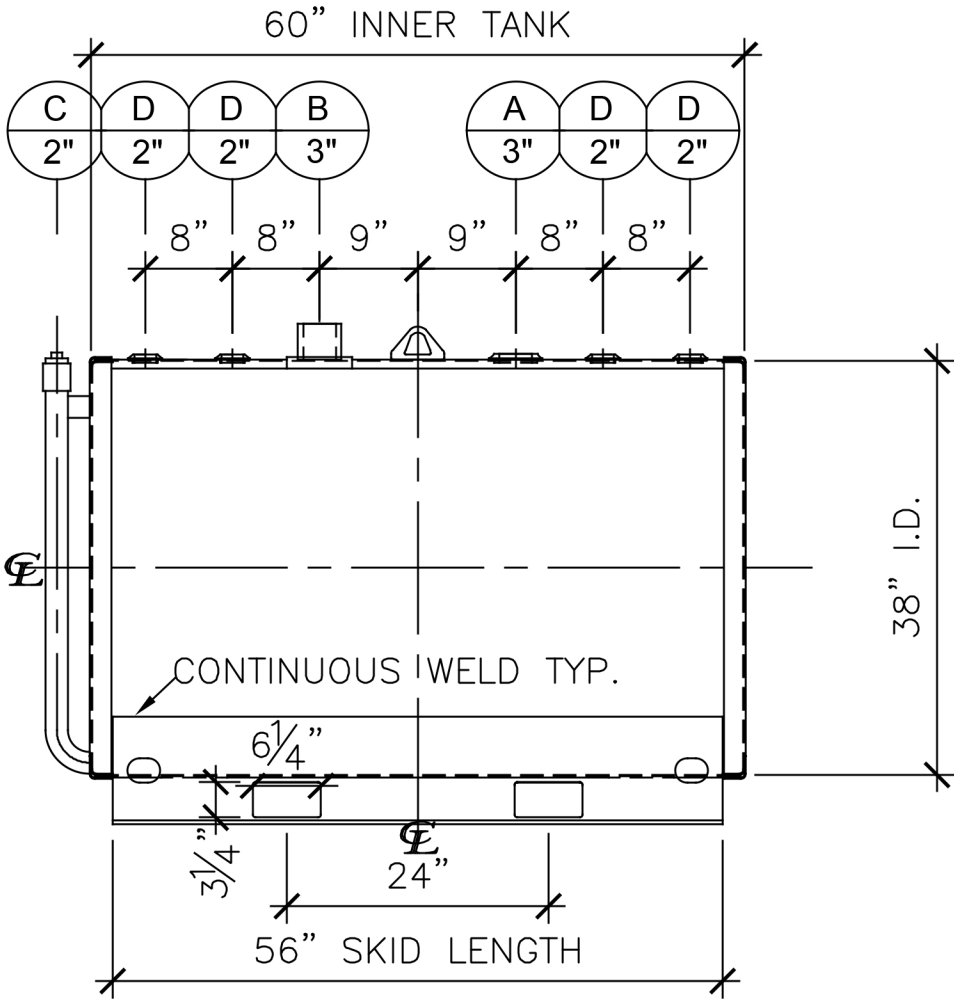


NOZZLE SCHEDULE						
ITEM	SIZE	RATING	TYPE	MATL	REMARKS	NOTES
A	3"	N.P.T.	W.F.	C.S.	PRIMARY	EMERGENCY VENT OPENING
B	3"	N.P.T.	HALF CPL.	C.S.	SECONDARY	EMERGENCY VENT OPENING
C	2"	N.P.T.	CPL.	C.S.	-	INTERSTICE MONITOR
D	2"	N.P.T.	W.F.	C.S.	-	-



LEFT SIDE



FRONT VIEW

- NOTES:
- A. Quantity:
 - B. Material: H.R. Carbon Steel.
 - C. Design Pressure: Atmospheric.
 - D. Design Temperature: Ambient.
 - E. Built & labeled per U.L. spec. #142.
 - F. Exterior: Gray primer included; see Sales Order for top coat.
 - G. All fittings to be protected for shipment.
 - H. Customer to verify nozzle sizes, locations and quantities.
 - I. Saddles/skids may require shimming or grouting during installation.

<p>APPROVAL FOR CONSTRUCTION</p> <p>SCHEDULE A - MASTER TERMS & CONDITIONS OF SALE*</p> <p><input type="checkbox"/> APPROVED AS DRAWN.</p> <p><input type="checkbox"/> APPROVED WITH NOTED CHANGES, CONSTRUCTION WILL BE SCHEDULED WHEN SIGNED DRAWING AND CONFIRMED ORDER ARE RECEIVED.</p> <p>SIGNATURE: _____</p> <p>DATE: _____</p>		<p>JME ELLSWORTH</p> <p><small>A John M. Ellsworth Company</small></p> <p>VESSEL DESCRIPTION:</p> <p>300 Gallon 38" I.D. x 5'-0" O.A.L. Double Wall Skid Tank</p> <table><tr><td colspan="2">CUSTOMER:</td><td colspan="2">P.O.#</td></tr><tr><td colspan="2">-</td><td colspan="2">-</td></tr><tr><td>DATE:</td><td>SCALE:</td><td>DWG.#</td><td>DRAWN BY:</td></tr><tr><td>-</td><td>-</td><td>NENB00300DWS038012G</td><td>AG</td></tr><tr><td colspan="2"></td><td>CHKD. BY:</td><td>TF</td></tr></table>		CUSTOMER:		P.O.#		-		-		DATE:	SCALE:	DWG.#	DRAWN BY:	-	-	NENB00300DWS038012G	AG			CHKD. BY:	TF
CUSTOMER:		P.O.#																					
-		-																					
DATE:	SCALE:	DWG.#	DRAWN BY:																				
-	-	NENB00300DWS038012G	AG																				
		CHKD. BY:	TF																				