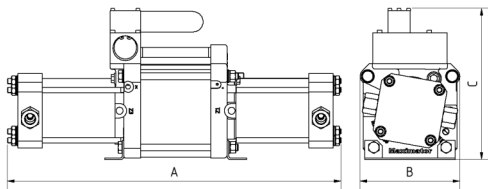
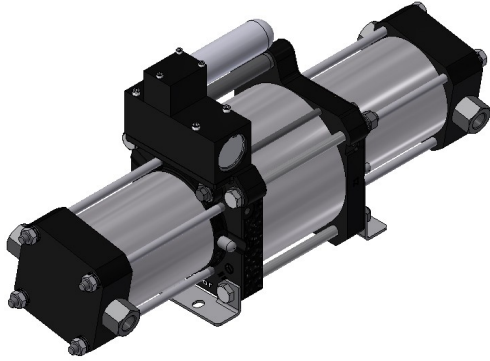


MAXIMATOR® US

MAXPRO Technologies

Technical Data Sheet

Gas booster DLE 2



DLE 2
double acting, single air drive head
single stage

Technical Data:

Air drive pressure pL:	1 - 10 bar / 14.5 - 145 psi
Pressure ratio i:	1:2
Compression ratio:	1:10
Minimum suction pressure pA:	0
Maximum suction pressure pA:	40 bar / 580 psi
Maximum outlet pressure pB:	40 bar / 580 psi
Displacement volume/double stroke:	1844 cm ³ / 112.5in ³
Maximum cycles:	90 / min
Stall pressure:	$P_{out} = (2 \times P_a) + P_s$

Standard Connections:

Air drive:	1/2" NPT
DLE 2 (-NN-M):	Inlet / Outlet: 1"NPT / 3/4" NPT
Maximum operating temperature:	60°C / 140°F
Net weight:	20 kg / 44 lbs

Pressure and flow performances, please see enclosed graph.

Materials of construction hp section DLE 2:

Standard seal package:	PTFE, FKM
Compressor head:	3.1645
HP cylinder:	3.3206
HP piston:	1.4404
Fittings:	1.4404
Balls:	1.4034
Springs:	1.4310

Approximate Dimensions:

A:	605 mm / 23.5 in
B:	181 mm / 7.125 in
C:	272 mm / 10.75 in

Available Options:

Inert gas service (standard):	DLE 2-NN-M
Oxygen service:	DLE 2-NN-S-M
CO ₂ service:	DLE 2-NN-C-M

Available Accessories:

Air control units with filter pressure regulator, control pressure gauge and shut off valve:	DLE 2 with ACP
--	----------------

Please consult factory for more information. All technical and dimensional information subject to change. All General Terms and Conditions of sale, including limitations of our liability, apply to all products and services sold.

MAXIMATOR® US

MAXPRO Technologies

