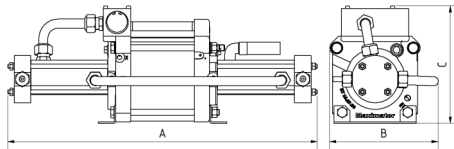
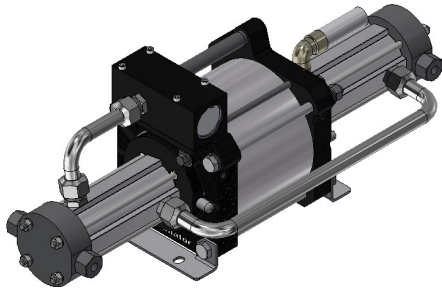


# MAXIMATOR® US

MAXPRO Technologies

## Technical Data Sheet

## Gas booster DLE 15



DLE 15  
double acting, single air drive head  
single stage

### Technical Data:

Air drive pressure pL:	1 - 10 bar / 14.5 - 145 psi
Pressure ratio i:	1:15
Compression ratio:	1:20
Minimum suction pressure pA:	7 bar / 100 psi
Maximum suction pressure pA:	300 bar / 4350 psi
Maximum outlet pressure pB:	300 bar / 4350 psi
Displacement volume/double stroke:	244 cm <sup>3</sup> / 14.9 in <sup>3</sup>
Maximum cycles:	120 / min
Stall pressure:	$P_{out}=(15*P_L)+P_a$

### Standard Connections:

Air drive:	1/2" NPT
DLE 15 (-NN):	Inlet / Outlet: 1/4" NPT
Maximum operating temperature:	100°C / 212°F
Net weight:	19 kg / 40 lbs

Pressure and flow performances, please see enclosed graph.

### Materials of construction hp section DLE 15:

Standard seal package:	PTFE, FKM
Compressor head:	1.4404
HP cylinder:	1.4542
HP piston:	1.4305
Fittings:	1.4404
Balls:	1.4034
Springs:	1.4310

### Approximate Dimensions:

A:	619 mm / 24.3 IN
B:	217 mm / 8.54 IN
C:	233 mm / 9.25 IN

### Available Options:

Inert gas service (standard):	DLE 15-NN-M
Oxygen service:	DLE 15-NN-S-M
CO <sub>2</sub> service:	DLE 15-NN-C-M
In-/Outlet: 9/16-18 UNF	DLE 15-UU-M

### Available Accessories:

Air control units with filter pressure regulator, control pressure gauge and shut off valve:	DLE 15 with ACP
--	-----------------

Please consult factory for more information. All technical and dimensional information subject to change. All General Terms and Conditions of sale, including limitations of our liability, apply to all products and services sold.



A John M. Ellsworth Company

John M. Ellsworth Co., Inc.

P.O. Box 240072  
8700 West Bradley Road  
Milwaukee, WI 53224

800-333-3331 **PHONE**

info@jmesales.com **E-MAIL**  
www.JMEsales.com **WEB**

