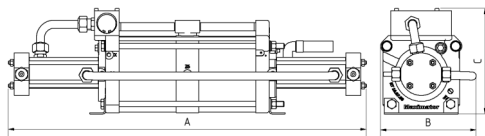
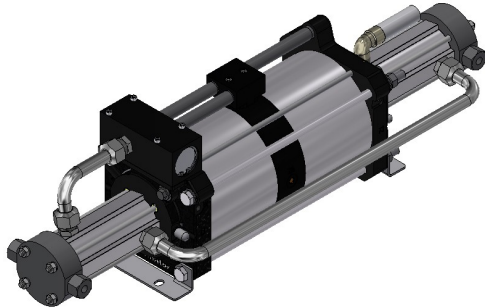


MAXIMATOR® US

MAXPRO Technologies

Technical Data Sheet

Gas booster DLE 30-2



DLE 30-2
double acting, double air drive head
single stage

Technical Data:

Air drive pressure pL:	1 - 10 bar / 14.5 - 145 psi
Pressure ratio i:	1:60
Compression ratio:	1:20
Minimum suction pressure pA:	290 psi
Maximum suction pressure pA:	8700 psi
Maximum outlet pressure pB:	8700 psi
Displacement volume/double stroke:	7.3 in ³
Maximum cycles:	100 / min
Stall pressure:	$pB = i * pL + pA$

Standard Connections:

Air drive:	3/4" NPT
DLE 30-2 (-NN):	Inlet / Outlet: 1/2" NPT
Maximum operating temperature:	212°F
Net weight:	51 LBS

Pressure and flow performances, please see enclosed graph.

Materials of construction hp section DLE 30-2:

Standard seal package:	PTFE, FKM
Compressor head:	1.4404
HP cylinder:	1.4542
HP piston:	1.4305
Fittings:	1.4404
Balls:	1.4034
Springs:	1.4310

Approximate Dimensions:

A:	31.34"
B:	8.39"
C:	9.17"

Available Options:

Inert gas service (standard):	DLE 30-2 (-NN)
Oxygen service:	DLE 30-2-NN-S-M
CO ₂ service:	DLE 30-2-NN-C-M
In-/Outlet: 9/16-18 UNF	DLE 30-2-UU-M
In-/Outlet: 1/4" NPT	DLE 30-2-NN-M

Available Accessories:

Air control units with filter pressure regulator, control pressure gauge and shut off valve:	DLE 30-2 with C2
To protect the booster against excessive outlet pressures or to limit the outlet pressure, a safety valve can be fitted to the air control unit in the air drive line.	DLE 30-2 with C2 / SV-air (The required outlet pressure has to be indicated.)

Please consult factory for more information. All technical and dimensional information subject to change. All General Terms and Conditions of sale, including limitations of our liability, apply to all products and services sold.



John M. Ellsworth Co., Inc.

P.O. Box 240072
8700 West Bradley Road
Milwaukee, WI 53224

800-333-3331 PHONE

info@jmesales.com E-MAIL
www.JMEsales.com WEB

