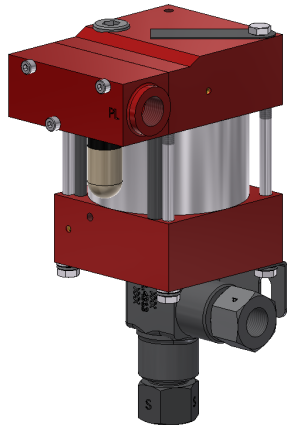
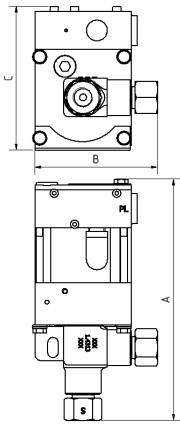


Technical Data Sheet



PP72)
single acting, single air drive head
(Standard= Bottom inlet)

PP72

» Oil service

PP72 VE

» Water service

Technical Data:

Air drive pressure:	1 - 10 bar / 14.5 - 145 psi
Calculated working pressure:	860 bar / 12470 psi
Pressure ratio:	1:86
Displacement volume/double stroke:	1.5 cm ³ / 0.09 cu.inch

Connections:

Inlet:	Standard: Bottom Inlet 3/8" NPT
Outlet:	1/4" NPT
Air drive:	1/4" NPT
Maximum operating temperature:	60°C / 140°F
Net weight:	2.8 kg / 6 lbs

Pressure and flow performances, please see enclosed graph.

Wetted materials of construction:

Seal package:	PP72 Polyurethane PP72 VE: UHMWPE, FKM
Pump Body:	1.4313
Piston:	1.4112
Fittings:	1.4104

Approximate Dimensions:

A:	227 mm / 8.96 in
B:	105 mm / 4.13 in
C:	120 mm / 4.72 in

Available Options:

Seal material for oil service:	PP72
Seal material for water service:	PP72 VE
Side inlet:	PP72 S / PP72 VES
Hand lever/ Spring return:	PP72-HL (only available with seal package Polyurethane, NBR)
External pilot port modification:	PP72-DIR

Special seal material to handle special fluids on request.

Available Accessories:

Air control units for M series with filter pressure regulator, control pressure gauge and shut off valve:	M72(L) with C1
To protect the pump against excessive outlet pressures or to limit the outlet pressure, a safety valve can be fitted to the air control unit in the air drive line.	M72(L) with C1/SV-air (The required outlet pressure has to be indicated.)

Please consult factory for more information. All technical and dimensional information subject to change. All General Terms and Conditions of sale, including limitations of our liability,

Leistungsdiagramm/Performance Graph M(O)(SF) 72

Prüfflüssigkeit/Test Liquid: Wasser-Öl-Emulsion/Water Oil Emulsion ca. 1 - 10 cst

