

MAXIMATOR® US

MAXPRO Technologies

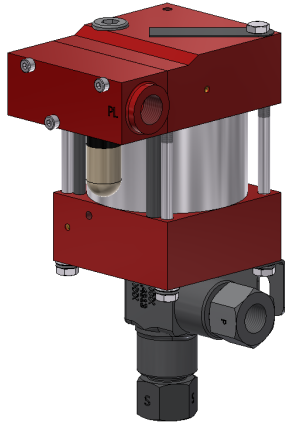
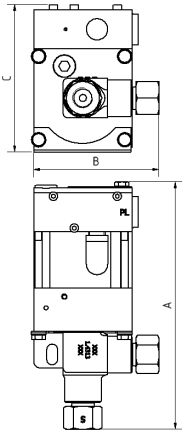
Technical Data Sheet

PP37

» Oil service

PP37 VE

» Water service



PP37
single acting, single air drive head
(Standard= Bottom inlet)

Technical Data:

Air drive pressure:	1 - 10 bar / 14.5 - 145 psi
Calculated working pressure:	460 bar / 6670 psi
Pressure ratio:	1:46
Displacement volume/double stroke:	2.8 cm ³ / 0.17 cu.inch

Connections:

Inlet:	Standard: Bottom Inlet 3/8" NPT
Outlet:	1/4" NPT
Air drive:	1/4" NPT
Maximum operating temperature:	60°C / 140°F
Net weight:	2.8 kg / 6 lbs

Pressure and flow performances, please see enclosed graph.

Wetted materials of construction:

Seal package:	PP37 Polyurethane PP37 VE: UHMWPE, FKM
Pump Body:	1.4313
Piston:	1.4112
Fittings:	1.4104

Approximate Dimensions:

A:	227 mm / 8.96 in
B:	105 mm / 4.13 in
C:	120 mm / 4.72 in

Available Options:

Seal material for oil service:	PP37
Seal material for water service:	PP37 VE
Side inlet:	PP37S / PP37 VES
Hand lever/ Spring return:	PP37-HL (only available with seal package Polyurethane, NBR)
External pilot port modification:	PP37-DIR

Special seal material to handle special fluids on request.

Available Accessories:

Air control units for M series with filter pressure regulator, control pressure gauge and shut off valve:	PP37 with ACM
To protect the pump against excessive outlet pressures or to limit the outlet pressure, a safety valve can be fitted to the air control unit in the air drive line.	PP37 with ACM-RV (The required outlet pressure has to be indicated.)

Please consult factory for more information. All technical and dimensional information subject to change. All General Terms and Conditions of sale, including limitations of our liability, apply to all products and services sold.

Leistungsdiagramm/Performance Graph M(O)(SF) 37

Prüfflüssigkeit/Test Liquid: Wasser-Öl-Emulsion/Water Oil Emulsion ca. 1 - 10 cst

