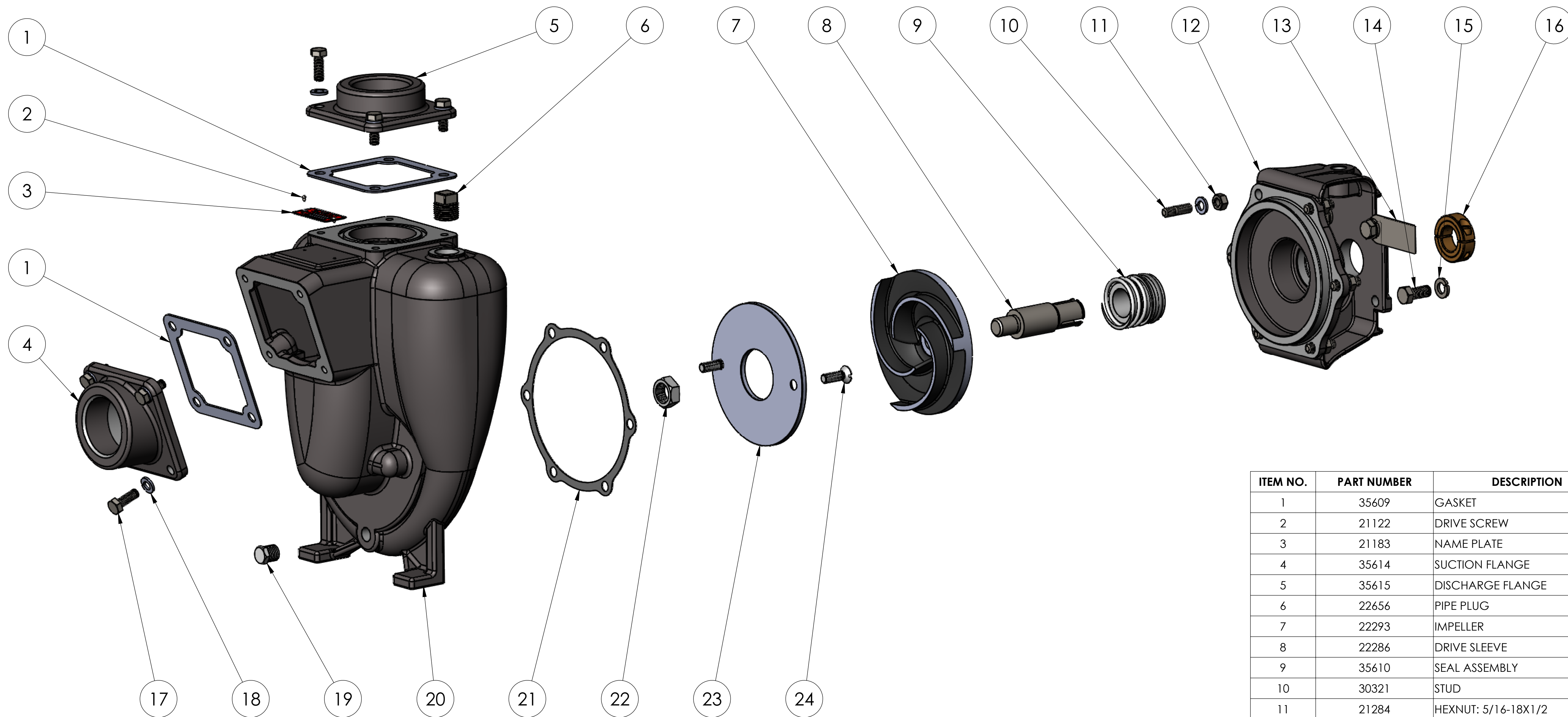


NOTE: THIS DRAWING OR PRINT, PROPERTY OF MP PUMPS, INC., CONTAINS PROPRIETARY AND CONFIDENTIAL INFORMATION. IT SHALL BE USED ONLY AS APPROVED BY MP PUMPS AND SHALL NOT BE GIVEN TO OTHERS OR COPIED WITHOUT THE WRITTEN CONSENT OF MP PUMPS. RETURN TO MP PUMPS PROMPTLY WHEN REQUESTED.

G						UNLESS OTHERWISE NOTED THIRD ANGLE PROJECTION  2 PLACE DIM $\pm .020$ 3 PLACE DIM $\pm .010$ ANGULAR DIM $\pm 1^\circ$  <b>DO NOT SCALE</b>	<b>MP PUMPS, INC.</b> FRASER, MICHIGAN 48026, U.S.A.			
F										
E							MATERIAL			
D							MATERIAL SPECS			
C							DRAWN BY	DATE COMP.	APPROV.	SCALE
B						NAME	SF	10/20/16	DD	MADE FOR
A							MADE FROM			
REV	DESCRIPTION	DRAWN	DATE	EN		PK8PPK D:PEM 3/4 5.0 T-2 CSC AWP				50180



ITEM NO.	PART NUMBER	DESCRIPTION	MATERIAL	QTY.
1	35609	GASKET	CORK/BUNA	2
2	21122	DRIVE SCREW	STAINLESS STEEL	2
3	21183	NAME PLATE	ALUMINUM	1
4	35614	SUCTION FLANGE	DUCTILE IRON	1
5	35615	DISCHARGE FLANGE	DUCTILE IRON	1
6	22656	PIPE PLUG	303 STAINLESS STEEL	1
7	22293	IMPELLER	CAST IRON	1
8	22286	DRIVE SLEEVE	303 STAINLESS STEEL	1
9	35610	SEAL ASSEMBLY	CAR/SIC/VITON	1
10	30321	STUD	304 STAINLESS STEEL	6
11	21284	HEXNUT: 5/16-18X1/2	304 STAINLESS STEEL	6
12	35606	ADAPTER	DUCTILE IRON	1
13	50179	NAME PLATE	303 STAINLESS STEEL	1
14	21251	CAPSCREW: 3/8-16X7/8	304 STAINLESS STEEL	4
15	21266	LOCKWASHER 3/8 X 1/8	304 STAINLESS STEEL	4
16	35612	CLAMP	BRASS	1
17	21242	CAP SCREW HH 5/16-18 X 7/8	304 STAINLESS STEEL	12
18	21238	LOCKWASHER 5/16 X 1/8	304 STAINLESS STEEL	18
19	21267	PIPE PLUG HH 1/4 NPT	316 STAINLESS STEEL	1
20	35604	HOUSING	DUCTILE IRON	1
21	35722	GASKET	KINGERSIL	1
22	22655	HEX JAM NUT 5/8-18	304 STAINLESS STEEL	1
23	22258	WEAR PLATE	ALUMINUM #6061	1
24	21249	SCREW FHS 5/16-18X1	304 STAINLESS STEEL	2

G						UNLESS OTHERWISE NOTED THIRD ANGLE PROJECTION  2 PLACE DIM ± .020 3 PLACE DIM ± .010 ANGULAR DIM ± 1°	MP PUMPS, INC. FRASER, MICHIGAN 48026, U.S.A.							
F							MATERIAL  DO NOT SCALE	DRAWN BY SF	DATE COMP. 10/20/16	APPROV. DD	SCALE	MADE FOR	MADE FROM	
E														
D														
C														
B														
A						NAME PK8PPK D:PEM 3/4 5.0 T-2 CSC AWP							50180	
REV	DESCRIPTION	DRAWN	DATE	FN										

NOTE: THIS DRAWING OR PRINT, PROPERTY OF MP PUMPS, INC., CONTAINS PROPRIETARY AND CONFIDENTIAL INFORMATION. IT SHALL BE USED ONLY AS APPROVED BY MP PUMPS AND SHALL NOT BE GIVEN TO OTHERS OR COPIED WITHOUT THE WRITTEN CONSENT OF MP PUMPS. RETURN TO MP PUMPS PROMPTLY WHEN REQUESTED.