

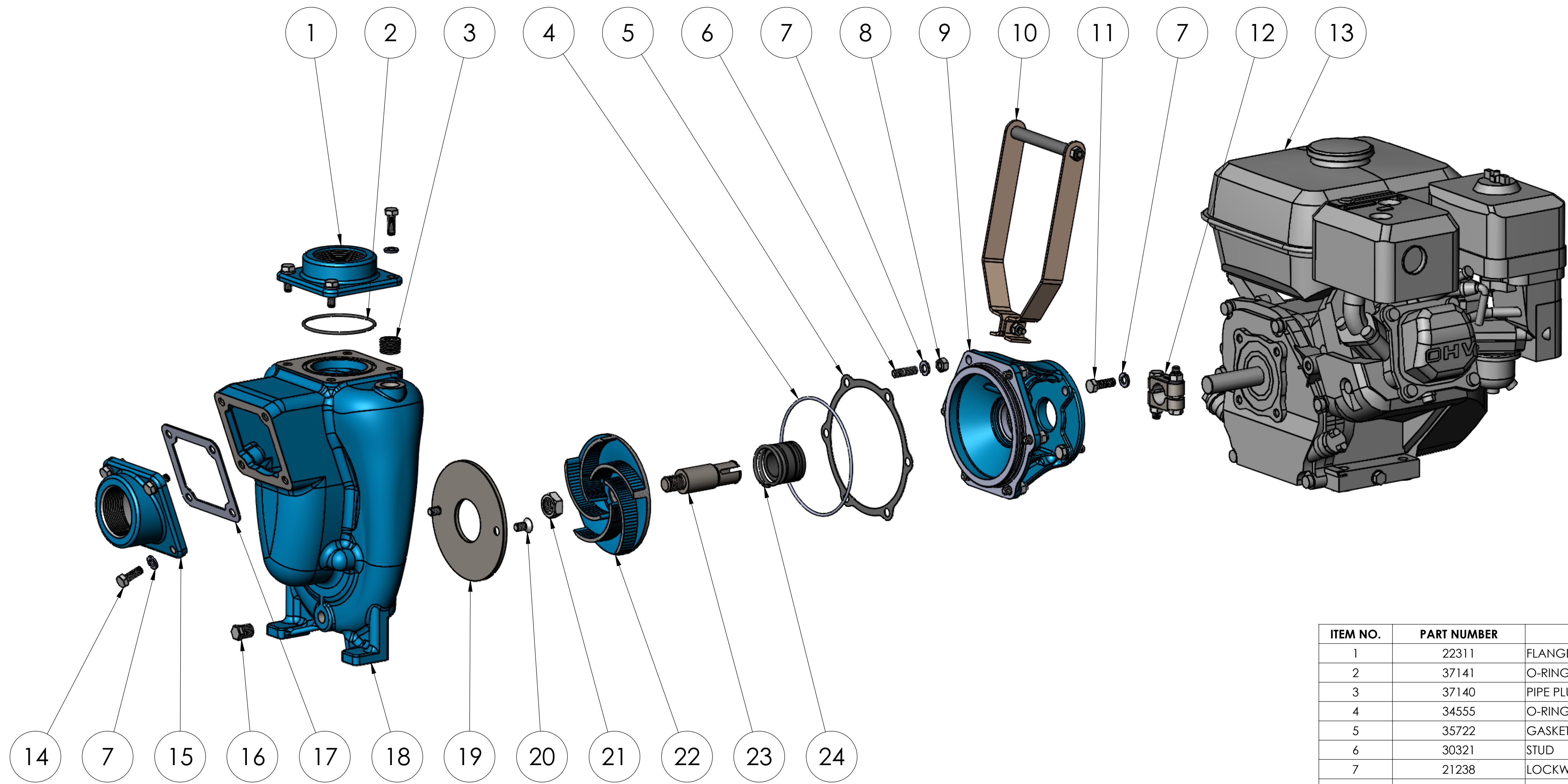
Ø .39 (2) PLACES THRU

W/Ø5.0" IMPELLER

LEFON 7.0 HP

NOTE: THIS DRAWING OR PRINT, PROPERTY OF MP PUMPS INC., CONTAINS PROPRIETARY AND CONFIDENTIAL INFORMATION. IT SHALL BE USED ONLY AS APPROVED BY MP PUMPS AND SHALL NOT BE GIVEN TO OTHERS OR COPIED WITHOUT THE WRITTEN CONSENT OF MP PUMPS. RETURN TO MP PUMPS PROMPTLY WHEN REQUESTED.

UNLESS OTHERWISE NOTED THIRD ANGLE PROJECTION				MP PUMPS, INC. FRASER, MICHIGAN 48026, U.S.A.					
2 PLACE DIM ± .020 3 PLACE DIM ± .010 ANGULAR DIM ± 1°									
DO NOT SCALE				MATERIAL	DATE COMP.	APPROV.	SCALE	MADE FOR	MADE FROM
A UPDATED DWG. ECN-1128407 SF 8/16/19 SF REV DESCRIPTION DRAWN DATE EN				NAME PO8PMP C:LF-7.0ES 4.95 HF T-21 NRS				39855	



ITEM NO.	PART NUMBER	DESCRIPTION	MATERIAL	QTY.
1	22311	FLANGE	CAST IRON	1
2	37141	O-RING AS-149	VITON	1
3	37140	PIPE PLUG 1/2"NPT	ZINC PLATED STEEL	1
4	34555	O-RING AS-568-158	VITON	1
5	35722	GASKET	KINGERSIL	1
6	30321	STUD	304 SS	6
7	21238	LOCKWASHER 5/16 X 18	304 SS	20
8	21284	HEXNUT 5/16-18X1/2	304 SS	9
9	22247	ADAPTER	CAST IRON	1
10	39768	HANDLE KIT	ZINC PLATED STEEL	2
11	36742	CAPSCREW STL:HH M8	STEEL	4
12	23002	CLAMP ASSEMBLY	303 SS	2
13	39854	ENGINE LF	7.OHP	1
14	21242	CAP SCREW HH 5/16-18 X 7/8	304 SS	8
15	22387	SUCTION FLANGE	CAST IRON	1
16	41475	PIPE PLUG:1/4 NPT	STEEL	1
17	35609	GASKET	CORK/BUNA	1
18	22251	HOUSING	CAST IRON	1
19	22260	WEAR PLATE	STEEL	1
20	37137	SCREW FHS 5/16-18 X 5/8	304 SS	2
21	22655	HEX JAM NUT 5/8-18	304 SS	1
22	36408	IMPELLER	CAST IRON	1
23	22286	DRIVE SLEEVE	303 SS	1
24	25460	SEAL ASSEMBLY	VITON	1

NOTE: THIS DRAWING OR PRINT, PROPERTY OF MP PUMPS INC., CONTAINS PROPRIETARY AND CONFIDENTIAL INFORMATION. IT SHALL BE USED ONLY AS APPROVED BY MP PUMPS AND SHALL NOT BE GIVEN TO OTHERS OR COPIED WITHOUT THE WRITTEN CONSENT OF MP PUMPS. RETURN TO MP PUMPS PROMPTLY WHEN REQUESTED.

G		UNLESS OTHERWISE NOTED THIRD ANGLE PROJECTION		MP PUMPS, INC. FRASER, MICHIGAN 48026, U.S.A.	
F		2 PLACE DIM ± .020 3 PLACE DIM ± .010 ANGULAR DIM ± 1°			
E		DO NOT SCALE		DRAWN BY	DATE COMP.
D				SF	8/16/19
C				APPROV.	SCALE
B				SF	SF
A		UPDATED DWG. ECN-1128407		REV	DESCRIPTION
		SF		DATE	EN
		8/16/19		NAME: PO8PMP C:LF-7.0ES 4.95 HF T-21 NRS	
				MADE FOR:	
				MADE FROM:	
				39855	