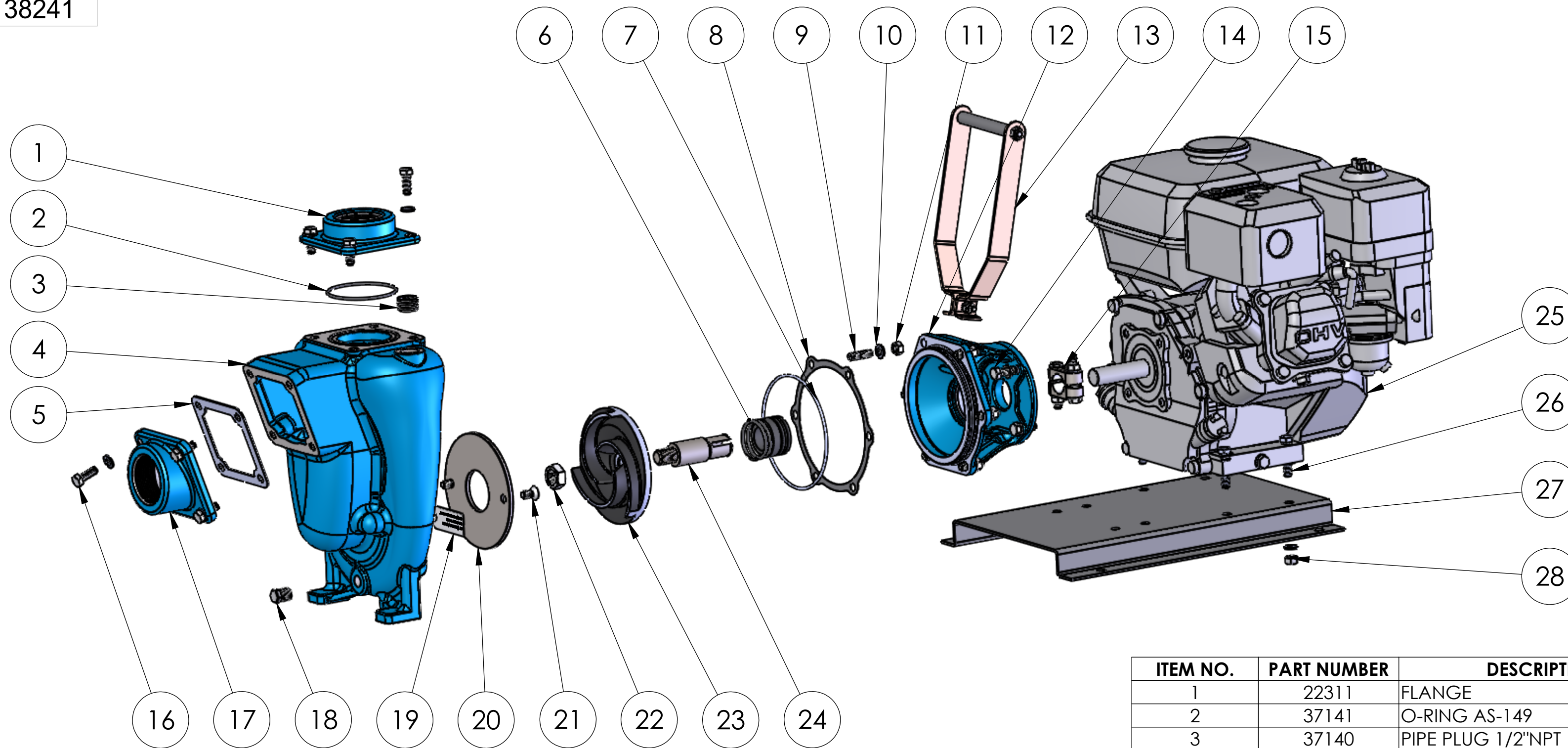


NOTE: THIS DRAWING OR PRINT, PROPERTY OF MP PUMPS INC., CONTAINS PROPRIETARY AND CONFIDENTIAL INFORMATION. IT SHALL BE USED ONLY AS APPROVED BY MP PUMPS AND SHALL NOT BE GIVEN TO OTHERS OR COPIED WITHOUT THE WRITTEN CONSENT OF MP PUMPS. RETURN TO MP PUMPS PROMPTLY WHEN REQUESTED.

G					UNLESS OTHERWISE NOTED THIRD ANGLE PROJECTION 2 PLACE DIM \pm .020 3 PLACE DIM \pm .010 ANGULAR DIM \pm 1°	MP PUMPS, INC. FRASER, MICHIGAN 48026, U.S.A.				
F										
E						MATERIAL				
D						MATERIAL SPECS				
C						DRAWN BY	DATE COMP.	APPROV.	SCALE	MADE FOR
B					S.F.	10/30/18	D.D.			
A					NAME					DRAWING NO
REV	DESCRIPTION	DRAWN	DATE	EN	PO8PMP C:H-5.5R ES 5.0 T-21 NRS WBA					38241



ITEM NO.	PART NUMBER	DESCRIPTION	MATERIAL	QTY.
1	22311	FLANGE	CAST IRON	1
2	37141	O-RING AS-149	VITON	1
3	37140	PIPE PLUG 1/2"NPT	ZINC PLATED STEEL	1
4	22251	HOUSING	CAST IRON	1
5	35609	GASKET	CORK/BUNA	1
6	25460	SEAL ASSEMBLY	VITON	1
7	34555	O-RING AS-568-158	VITON	1
8	35722	GASKET	KINGERSIL	1
9	30321	STUD	304 SS	6
10	21238	LOCKWASHER 5/16 X 18	304 SS	24
11	21284	HEXNUT 5/16-18X1/2	304 SS	9
12	22247	ADAPTER	CAST IRON	1
13	39768	HANDLE KIT	ZINC PLATED STEEL	2
14	21278	HEX BOLT 5/16-24 X.88	304 SS	4
15	23002	CLAMP ASSEMBLY	303 SS	1
16	21242	CAP SCREW HH 5/16-18 X 7/8	304 SS	8
17	22387	SUCTION FLANGE	CAST IRON	1
18	41475	PIPE PLUG:1/4 NPT	STEEL	1
19	35682	NAME PLATE	304 SS	1
20	22260	WEAR PLATE	STEEL	1
21	37137	SCREW FHS 5/16-18 X 5/8	304 SS	2
22	22655	HEX JAM NUT 5/8-18	304 SS	1
23	22293	IMPELLER	CAST IRON	1
24	22286	DRIVE SLEEVE	303 SS	1
25	36763	HONDA ENGINE 5.5HP	MOTOR	1
26	21292	CAPSCREW 5/16X18X1.5	STEEL	4
27	21955	BASE	STEEL	1
28	24984	HEXNUT	STEEL	4

NOTE: THIS DRAWING OR PRINT, PROPERTY OF MP PUMPS INC., CONTAINS PROPRIETARY AND CONFIDENTIAL INFORMATION. IT SHALL BE USED ONLY AS APPROVED BY MP PUMPS AND SHALL NOT BE GIVEN TO OTHERS OR COPIED WITHOUT THE WRITTEN CONSENT OF MP PUMPS. RETURN TO MP PUMPS PROMPTLY WHEN REQUESTED.

G					UNLESS OTHERWISE NOTED THIRD ANGLE PROJECTION	MP PUMPS, INC. FRASER, MICHIGAN 48026, U.S.A.					
F											
E					2 PLACE DIM ± .020 3 PLACE DIM ± .010 ANGULAR DIM ± 1°						
D					MATERIAL	MATERIAL SPECS					
C					DO NOT SCALE	DRAWN BY S.F.	DATE COMP. 10/30/18	APPROV. D.D.	SCALE	MADE FOR	MADE FROM
B					NAME	DRAWING NO					
A					PO8PMP C:H-5.5R ES 5.0 T-21 NRS WBA	38241					
REV	DESCRIPTION	DRAWN	DATE	EN							