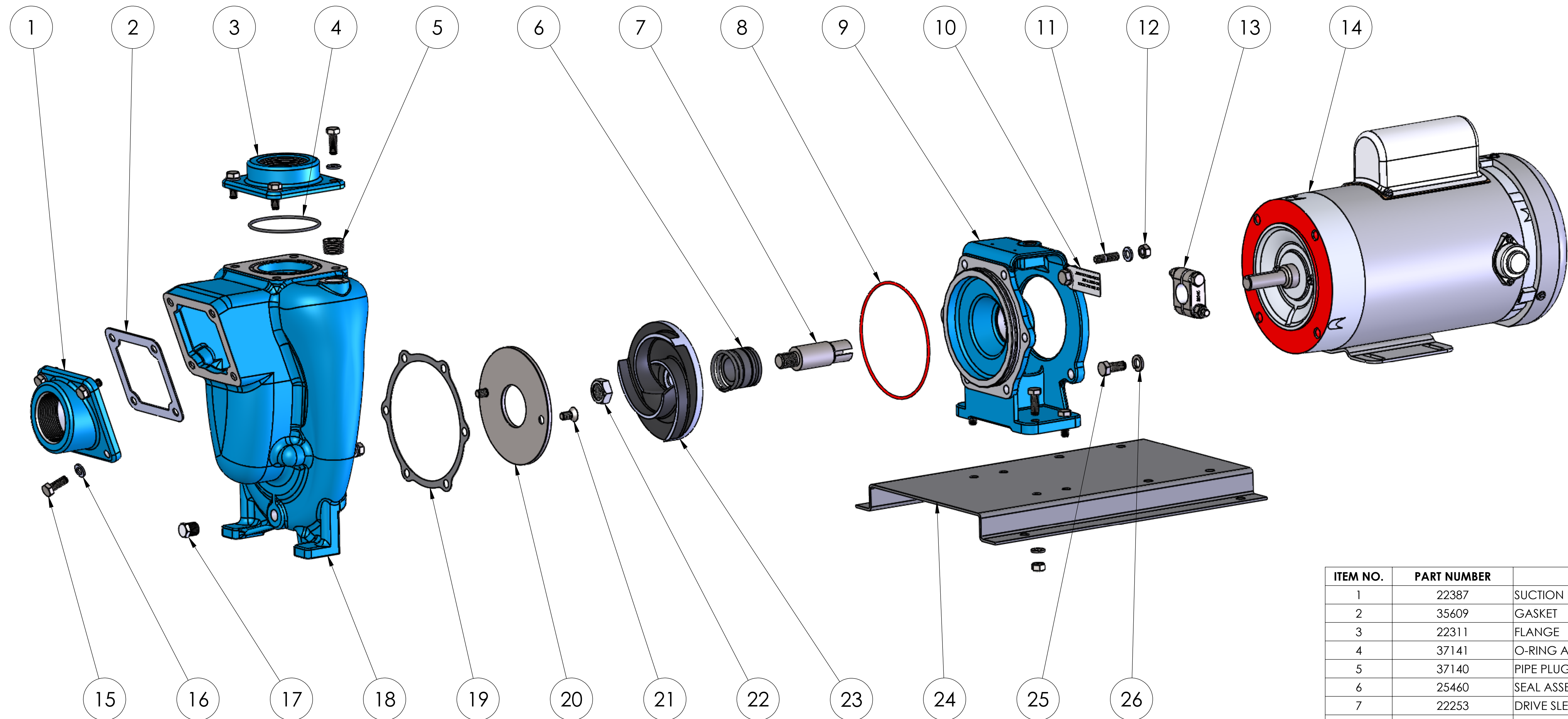


NOTE: THIS DRAWING OR PRINT, PROPERTY OF MP PUMPS, INC., CONTAINS PROPRIETARY AND CONFIDENTIAL INFORMATION. IT SHALL BE USED ONLY AS APPROVED BY MP PUMPS AND SHALL NOT BE GIVEN TO OTHERS OR COPIED WITHOUT THE WRITTEN CONSENT OF MP PUMPS. RETURN TO MP PUMPS PROMPTLY WHEN REQUESTED.

G					UNLESS OTHERWISE NOTED THIRD ANGLE PROJECTION  2 PLACE DIM ± .020 3 PLACE DIM ± .010 ANGULAR DIM ± 1°	MP PUMPS, INC. FRASER, MICHIGAN 48026, U.S.A.						
F						MATERIAL  DO NOT SCALE	MATERIAL SPECS					
E							DRAWN BY SF	DATE COMP. 4/14/16	APPROV. DD	SCALE	MADE FOR	MADE FROM
D												
C												
B					NAME PO8PMP C:2-1 56C FA 5.0 T-21 NRS WBA						36765	
A												
REV	DESCRIPTION	DRAWN	DATE	EN								



ITEM NO.	PART NUMBER	DESCRIPTION	MATERIAL	QTY.
1	22387	SUCTION FLANGE	CAST IRON	1
2	35609	GASKET	CORK/BUNA	1
3	22311	FLANGE	CAST IRON	1
4	37141	O-RING AS-149	VITON	1
5	37140	PIPE PLUG 1/2"NPT	STEEL ZINC PLATED	1
6	25460	SEAL ASSEMBLY	VITON	1
7	22253	DRIVE SLEEVE	303 STAINLESS STEEL	1
8	34555	O-RING AS-568-158	VITON	1
9	25904	ADAPTOR	CAST IRON	1
10	35682	NAME PLATE	STAINLESS STEEL	1
11	30321	STUD	304 STAINLESS STEEL	6
12	21284	HEXNUT: 5/16-18X1/2	304 STAINLESS STEEL	12
13	23002	CLAMP ASSEMBLY	303 STAINLESS STEEL	2
14	24730	ELECTRIC MOTOR	TEFC	1
15	21242	CAP SCREW HH 5/16-18 X 7/8	304 STAINLESS STEEL	12
16	21238	LOCKWASHER 5/16 X 1/8	304 STAINLESS STEEL	16
17	21267	PIPE PLUG HH 1/4 NPT	316 STAINLESS STEEL	1
18	22251	HOUSING	CAST IRON	1
19	35722	GASKET	KINGERSIL	1
20	22260	WEAR PLATE	STEEL	1
21	37137	SCREW FHS 5/16-18 X 5/8	304 STAINLESS STEEL	2
22	22655	HEX JAM NUT 5/8-18	304 STAINLESS STEEL	1
23	22293	IMPELLER	CAST IRON	1
24	21955	BASE	STEEL	1
25	21251	CAPSCREW: 3/8-16X7/8	304 STAINLESS STEEL	4
26	21266	LOCKWASHER 3/8 X 1/8	304 STAINLESS STEEL	4

NOTE: THIS DRAWING OR PRINT, PROPERTY OF MP PUMPS, INC., CONTAINS PROPRIETARY AND CONFIDENTIAL INFORMATION. IT SHALL BE USED ONLY AS APPROVED BY MP PUMPS AND SHALL NOT BE GIVEN TO OTHERS OR COPIED WITHOUT THE WRITTEN CONSENT OF MP PUMPS. RETURN TO MP PUMPS PROMPTLY WHEN REQUESTED.

UNLESS OTHERWISE NOTED  
THIRD ANGLE PROJECTION

2 PLACE DIM  $\pm .020$   
3 PLACE DIM  $\pm .010$   
ANGULAR DIM  $\pm 1^\circ$

**MP PUMPS, INC.**  
FRASER, MICHIGAN 48026, U.S.A.

MATERIAL		MATERIAL SPEC'S			
DRAWN BY	DATE COMP.	APPROV.	SCALE	MADE FOR	MADE FROM
SF	4/14/16	DD			

NAME  
PO8PMP C:2-1 56C FA 5.0 T-21 NRS WBA

36765