

NOTE: THIS DRAWING OR PRINT, PROPERTY OF MP PUMPS INC., CONTAINS PROPRIETARY AND CONFIDENTIAL INFORMATION. IT SHALL BE USED ONLY AS APPROVED BY MP PUMPS AND SHALL NOT BE GIVEN TO OTHERS OR COPIED WITHOUT THE WRITTEN CONSENT OF MP PUMPS. RETURN TO MP PUMPS PROMPTLY WHEN REQUESTED.

COMPATIBLE FOR DIESEL, BIO-DIESEL AND FUEL OIL

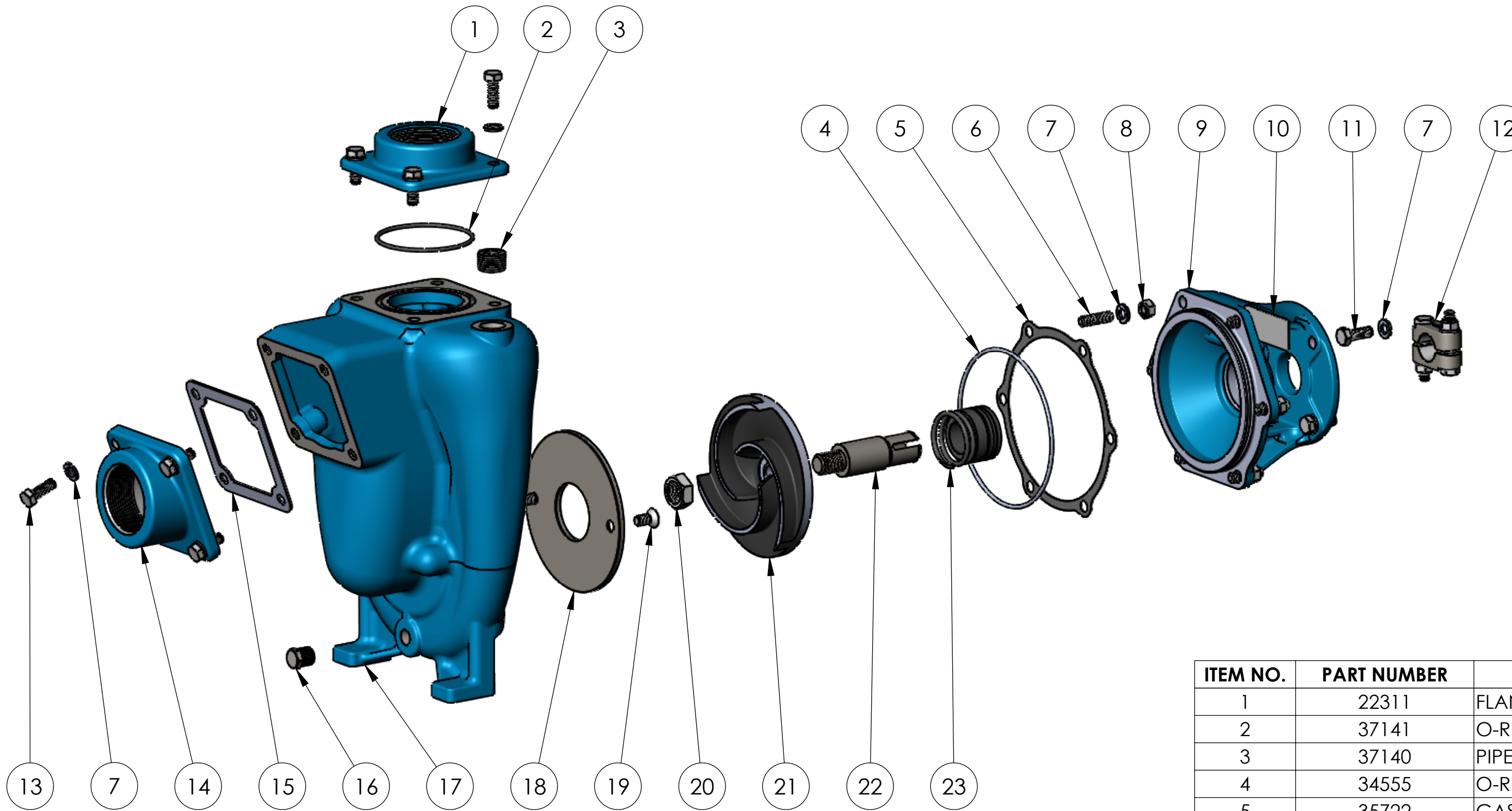
G						UNLESS OTHERWISE NOTED THIRD ANGLE PROJECTION 2 PLACE DIM \pm .020 3 PLACE DIM \pm .010 ANGULAR DIM \pm 1°	MP PUMPS, INC. FRASER, MICHIGAN 48026, U.S.A.				
F											
E							MATERIAL				
D							MATERIAL SPECS				
C							DRAWN BY	DATE COMP.	APPROV.	SCALE	MADE FOR
B						SF	2/21/20	SF			
A	UPDATED DWG & ADDED EXPLODED VIEW	ECN 1132286	SF	2/21/20	SF	NAME					DRAWING NO
REV	DESCRIPTION		DRAWN	DATE	EN	PO8PPK C:PEM 3/4 5.0 T-21 NRS					36992

DO NOT SCALE

PO8PPK C:PEM 3/4 5.0 T-21 NRS

DRAWING NO

36992



ITEM NO.	PART NUMBER	DESCRIPTION	MATERIAL	QTY.
1	22311	FLANGE	CAST IRON	1
2	37141	O-RING AS-149	VITON	1
3	37140	PIPE PLUG 1/2"NPT	ZINC PLATED STEEL	1
4	34555	O-RING AS-568-158	VITON	1
5	35722	GASKET	KINGERSIL	1
6	30321	STUD	304 SS	6
7	21238	LOCKWASHER 5/16 X 18	304 SS	20
8	21284	HEXNUT 5/16-18X1/2	304 SS	8
9	22247	ADAPTER	CAST IRON	1
10	35682	NAME PLATE	304 SS	1
11	21278	HEX BOLT 5/16-24 X.88	304 SS	4
12	23002	CLAMP ASSEMBLY	303 SS	1
13	21242	CAP SCREW HH 5/16-18 X 7/8	304 SS	8
14	22387	SUCTION FLANGE	CAST IRON	1
15	35609	GASKET	CORK/BUNA	1
16	21267	PIPE PLUG HH 1/4 NPT	316 SS	1
17	22251	HOUSING	CAST IRON	1
18	22260	WEAR PLATE	STEEL	1
19	37137	SCREW FHS 5/16-18 X 5/8	304 SS	2
20	22655	HEX JAM NUT 5/8-18	304 SS	1
21	22293	IMPELLER	CAST IRON	1
22	22286	DRIVE SLEEVE	303 SS	1
23	25460	SEAL ASSEMBLY	VITON	1

NOTE: THIS DRAWING OR PRINT, PROPERTY OF MP PUMPS INC., CONTAINS PROPRIETARY AND CONFIDENTIAL INFORMATION. IT SHALL BE USED ONLY AS APPROVED BY MP PUMPS AND SHALL NOT BE GIVEN TO OTHERS OR COPIED WITHOUT THE WRITTEN CONSENT OF MP PUMPS. RETURN TO MP PUMPS PROMPTLY WHEN REQUESTED.

COMPATIBLE FOR DIESEL, BIO-DIESEL AND FUEL OIL

G					UNLESS OTHERWISE NOTED THIRD ANGLE PROJECTION		MP PUMPS, INC. FRASER, MICHIGAN 48026, U.S.A.		
F					2 PLACE DIM ± .020 3 PLACE DIM ± .010 ANGULAR DIM ± 1°				
E					DO NOT SCALE		MATERIAL SPEC DRAWN BY: SF DATE COMP.: 2/21/20 APPROV.: SF SCALE: MADE FOR: MADE FROM:		
D					NAME		DRAWING NO		
C					A UPDATED DWG & ADDED EXPLODED VIEW ECN 1132286 SF 2/21/20 SF		PO8PPK C:PEM 3/4 5.0 T-21 NRS		
B					REV DESCRIPTION		36692		