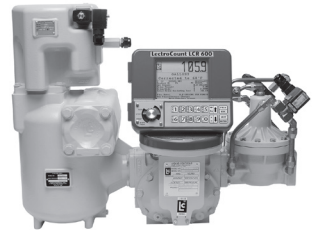


PD Meter System Ordering Guide



DATE _____
DISTRIBUTOR _____
CONTACT & PHONE NUMBER _____
METER MODEL NUMBER _____
APPLICATION (PRODUCT) _____



FLOW RATE

Max _____
Nominal _____
Min _____

OPERATING TEMPERATURE

Max _____
Nominal _____
Min _____

DIRECTION OF FLOW

L to R R to L

VISCOSITY

Max _____ @ _____ (temp.)

OPERATING PRESSURE

Max non shock _____

REGISTRATION UNIT OF MEASURE _____

SEAL MATERIAL

Buna/Viton All Viton All PTFE/FEP

STRAINER

Standard High Capacity (M7 through M25 only)

STRAINER BASKET

20 mesh 40 mesh 80 mesh
 100 mesh 200 mesh (MA7 only)

BACK PRESSURE VALVE

AIR CHECK VALVE

FLANGE

Size _____
 NPT BSPT Weld

Select Electronic or Mechanical Registration

ELECTRONIC REGISTRATION

LectroCount Register

LCR-II LCR 600 LCR 600 POS

Meter System

Single Dual

LCR Model Number _____

See Price List L

Software Part Number _____

A list of all available software is in the L Price List

Optical Air/Vapor Eliminator

Requires solenoid operated valve

MECHANICAL REGISTRATION

Preset

5-digit preset 4-digit preset

Printer Configuration

Printer face up Printer face down Printer accum.

Temperature Volume Compensation

Microswitches

Counter Extension

Rate of Flow Indicator¹

Swivel¹

¹ Not available for all meter sizes and classes.

SPECIAL INSTRUCTIONS