

CS-Series Industrial Grade for Professional Use

For 3/8" and 1/2" Hose I.D.

C-Series 304 STAINLESS STEEL Reels should be utilized in harsh environments, such as chemical clean up or when an exceptionally clean area has to be maintained for food or beverage process. **The latch** mechanism is nonsparking in the event flammable gases or liquids are present. Only available in low pressure.

Mounting Slots 1/2" wide x 3/4" deep for max 7/16" dia. bolt.

Reels shipped standard sf hose payout position. For ceiling mount add suffix sc.

Product Name:

Hosetract CS-Series Low Pressure

Manufacturer:

Hosetract
6433 Discount Drive
Fort Wayne, IN 46818
www.hosetract.com

Options:

- Air / Water application hose
- White washdown hose
- Chemical application hose

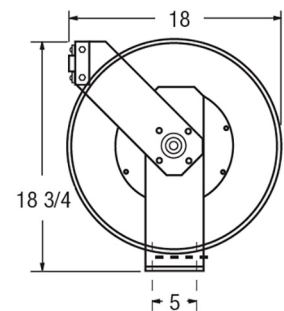
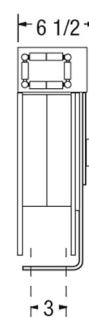
Features:

- Reels shipped standard sf hose payout position.
- Available in Powder Coat or (304) Stainless Steel.
- Mounting Slots - 1/2" wide x 3/4" deep for max 7/16" dia. bolt



Inlet — 1/2" FPT

Max. Temp. — 200°F



CS-Series Industrial Grade for Professional Use

For 3/8" and 1/2" Hose I.D.

STAINLESS CS SERIES (304)

Models without hose and hose stop

Model #	Weight	PSI	Hose Capacity ID	Hose Capacity Length	Hose End Fitting	USD Price
LCS-300	40	300	3/8"	50'	None	\$800.00
LCS-500	40	300	1/2"	50'	None	\$850.00
LCS-300-SSB	40	300	3/8"	50'	None	\$1,050.00
LCS-500-SSB	40	300	1/2"	50'	None	\$1,100.00
LCS-300-SSV	40	4000	3/8"	50'	None	\$1,200.00
LCS-500-SSV	40	4000	1/2"	50'	None	\$1,200.00

Models with hose and hose stop

Model #	Weight	PSI	Hose ID	Hose Length	Hose End Fitting	USD Price
LCS-350-NY	48	300	3/8"	50'	3/8" NPTM	\$995.00
LCS-370-NY	51	300	3/8"	70'	3/8" NPTM	\$1,185.00
LCS-550-NY	56	300	1/2"	50'	1/2" NPTM	\$1,025.00
LCS-550-WD	56	300	1/2"	50'	1/2" NPTM	\$930.00

WD is white wash down with brass fittings and ferrules

NY is Nyall chemical hose with brass fittings and ferrules

SSB includes stainless steel shaft and swivel with BUNA o'ring; 250°F 1000 PSI

SSV includes stainless steel shaft and swivel with Viton o'ring; 400°F 4000 PSI

ACCESSORIES:

Hose Stop Assemblies



1234A - 1/4"



1233A - 3/8"



1232A - 1/2"

Mount Assemblies



1279A - I-Beam Bracket



1282A - Swivel Bracket