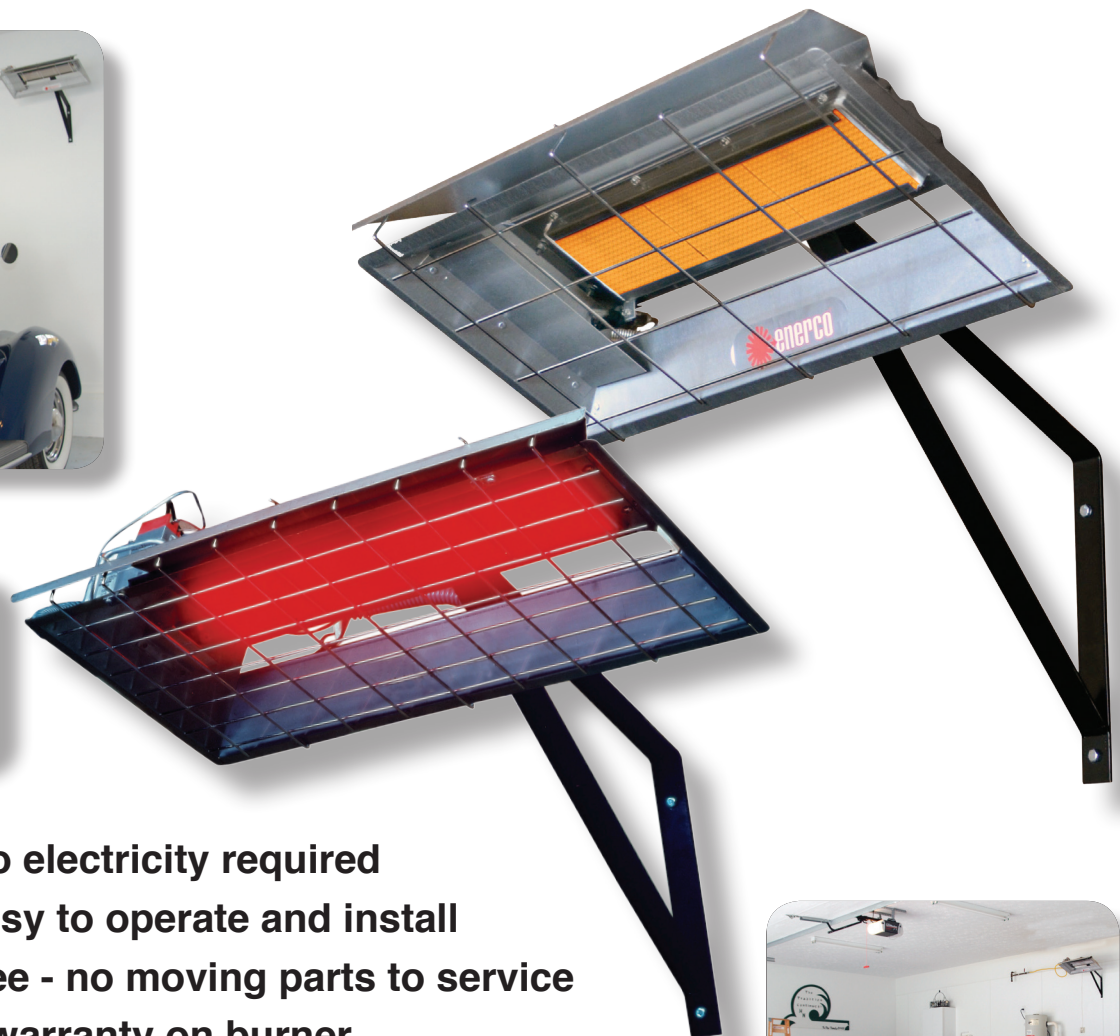


GARAGE/WORKSHOP INFRARED HEATERS



**HIGHLY EFFICIENT
AND COST EFFECTIVE
RADIANT HEAT.**

HEATSTAR



**NEW
Black
Model**

- Economical - no electricity required
- Convenient - easy to operate and install
- Maintenance free - no moving parts to service
- Limited 5-Year warranty on burner
- Quiet, clean, odor-free operation
- Includes thermostat
- CSA certified



22,000-25,000 BTU/HR HEATERS FOR:

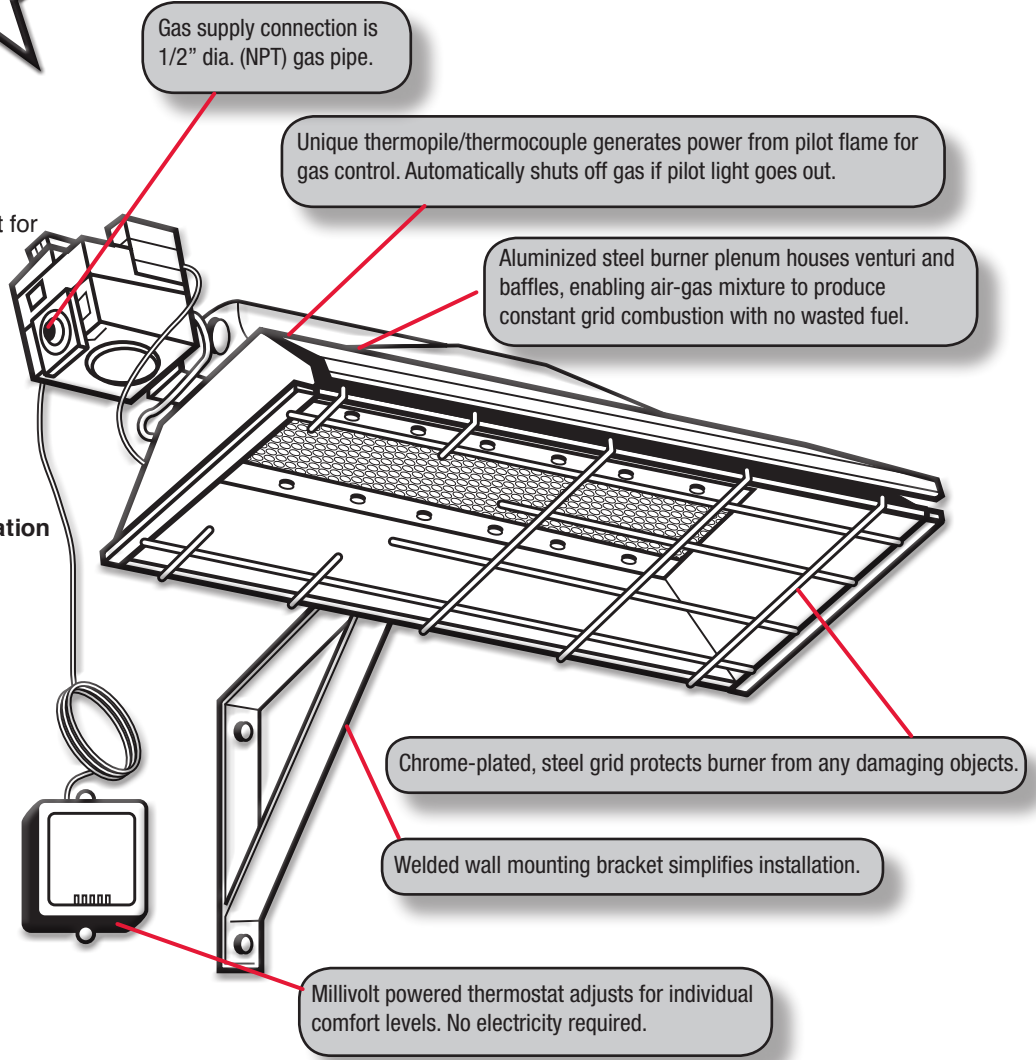
- Garages/Workshops • Barns/Utility/Storage Sheds • Animal Pens/Stalls • Loading Docks
- Building Construction Sites • Doorways/Ramps for Snow Prevention

AMERICA'S MOST COMPLETE LINE OF INFRARED HEATERS.

HEATSTAR

GARAGE/WORKSHOP INFRARED HEATERS

- **Efficient Infrared Heat** - Directly heats people and objects which in turn heats surrounding air to desired temperature
- **Instant Heat** - Includes adjustable thermostat for individually controlled warmth
- **Large Capacity** - Heats 500-600 sq. ft. (Average 2 1/2 car garage)
- **Quiet Clean, Odor Free Operation** - Propane or natural gas
- **Ships complete in package for easy installation**
- **Includes wall louvre for fresh air intake**
- **Limited 1 year warranty** - On gas control
- **Limited 5 year warranty** - On burner



SPECIFICATIONS & TECHNICAL DATA

Stock #	Model Number	BTU/HR Rating		Normal Mounting Position	Mounting Clearance to Combustibles				Reflector Dimensions LxWxH (Inches)	Total Dimensions LxWxH (Inches)	Shipping Weight (lbs)	Gas Inlet	Manifold Pressure
		Natural Gas	Propane		Top	Side	Back	Below					
F125545	H22L (Aluminum Housing)	-	22,000*	30°	14"	16"	12"	48"	26 1/2 x 11 9/16 x 3 1/4	29 3/4 x 12 1/4 x 7	25	1/2"	10"
F125444	H25N (Aluminum Housing)	25,000*	-	30°	14"	16"	12"	48"	26 1/2 x 11 9/16 x 3 1/4	29 3/4 x 12 1/4 x 7	25	1/2"	6"
F172105	H22BLP (Black Housing)	-	22,000*	30°	14"	16"	12"	48"	26 1/2 x 11 9/16 x 3 1/4	29 3/4 x 12 1/4 x 7	25	1/2"	10"
F172106	H25BNG (Black Housing)	25,000*	-	30°	14"	16"	12"	48"	26 1/2 x 11 9/16 x 3 1/4	29 3/4 x 12 1/4 x 7	25	1/2"	6"

* Ratings show are for elevations up to 2,000 feet. (In Canada, refer to rating tag.) For elevations above 2,000 feet, ratings should be reduced at the rate of 4% for each 1,000 feet above sea level or as specified by local authority having jurisdiction.

DO NOT use this in sleeping quarters, mobile homes or recreational vehicles.

L201-B