



# Hannay Reels®

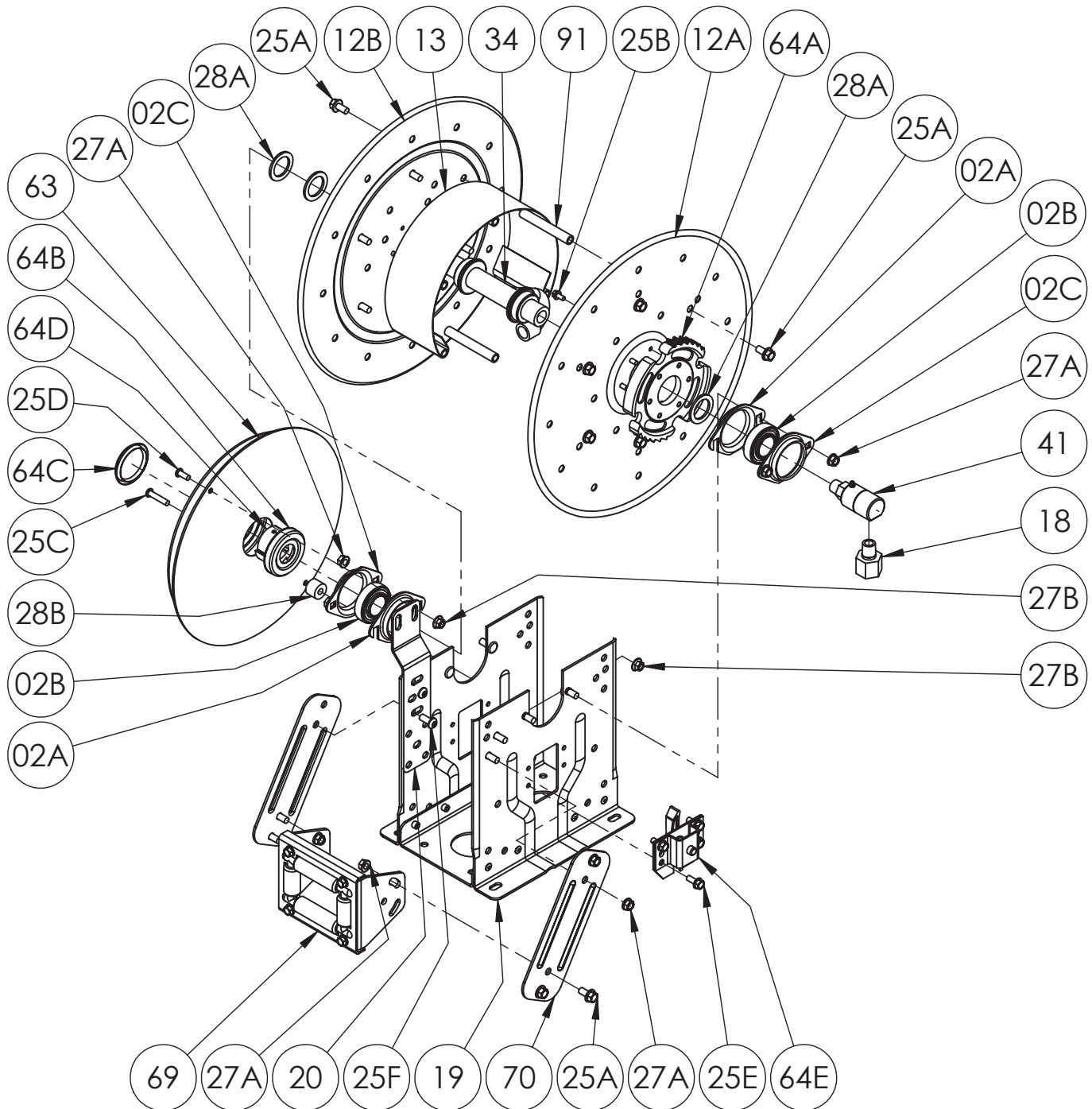
*The reel leader.*

Hannay Reels, Inc., 553 State Route 143  
Westerlo, NY 12193-0159  
Telephone 518-797-3791 • Toll Free 877-GO REELS (467-3357)  
FAX 1-800-REELING (733-5464)  
INT'L FAX (518) 797-3259  
Website: www.hannay.com  
E-mail: reels@hannay.com

## ISO 247

PARTS LIST

DEF-625, DEF-650 & DEF-675



**PARTS LIST**  
**ISO 247**  
**DEF-625, DEF-650 & DEF-675**

When ordering parts

**BE SURE TO SPECIFY COMPLETE MODEL NUMBER and SERIAL NUMBER OF REEL.**

**USE PART NUMBER!**

<u>Item No.</u>	<u>Description</u>	<u>PART NUMBER</u>	<u>Quantity</u>
02	1" Self Aligning Bearing for N Series Complete (Items 02A, 02B and 02C).	9902.2600	2
02A	Self Aligning Bearing Holder (Slotted), per P02A-00090 (Steel E-Coated) ..	9902.2801	2
02B	1" Self Aligning Bearing Insert (Plated) .....	9902.1500	2
02C	Self Aligning Bearing Holder, per P02A-00080 (Steel E-Coated) .....	9902.2800	2
12A	Front Disc (Steel E-Coated) .....	Spec Model	1
12B	Back Disc (Steel E-Coated) .....	Spec Model	1
13	10-1/2" Diameter 304 SST Wrap-Around Drum (Specify DEF-625 or DEF-650)	9905.0138	1
13	15-1/2" Diameter 304 SST Wrap-Around Drum (Not Shown) (Specify DEF-675)	9905.0178	1
18	1/2" MNPT x 3/4" FNPT 304 SST Adapter .....	9950.0081	1
19	N Series Spring Reel Frame Assembly for DEF-625 .....	9908.0053	1
19	N Series Spring Reel Frame Assembly for DEF-650 (Not Shown) .....	9908.0056	1
19	N Series Spring Reel Frame Assembly for DEF-675 (Not Shown) .....	9908.0060	1
20	N Series Spring Mounting Bracket, per P20A-00280 .....	9922.0050	1
25A	3/8"-16 x 3/4" Spinlock Bolt .....	9904.2201	16 or 24
25B	1/4"-20 x 1/2" Spinlock Bolt (Ratchet Wheel) .....	9904.1058	6
25C	5/16"-18 x 1-1/2" Hex Socket Button Head Screw (for DEF-625 & DEF-650)	9904.9104	1
25D	5/16"-18 x 3/4" Hex Socket Button Head Screw (for DEF-625 & DEF-650) .	9904.9101	1
25E	5/16"-18 x 3/4" Thread Cutting Hex Head Bolt (For Ratchet Locking Ass'y)	9958.0055	4
25F	3/8"-16 x 7/8" Socket Head Cap Screw .....	9904.9201	4
25G	3/8"-16 x 1-1/2" Spinlock Bolt for spring mounting (for DEF-675 only) (Not Shown)	9904.2204	2
25H	3/8"-16 x 3/4" Spinlock Bolt for spring mounting (for DEF-675 only) (Not Shown)	9904.2201	2
27A	3/8"-16 Spinlock Nut .....	9904.6200	12 or 16
27B	5/16"-18 Large Flange Spinlock Nut (for DEF-625 & DEF-650) .....	9904.6100	2
28A	1-7/8" O.D. x 1-5/16" I.D. x 1/8" Thick Hub Spacer, per P28A-00360 .....	9954.0021	3
28B	Round 3/4" Thick Spring Spacer, per P28A-00070 (for DEF-625 & DEF-650)	9922.0033	1
28C	Oval Spring Spacer, per P28A-00020 (for DEF-675 only) (Not Shown) .....	9922.0032	1
29	Woodruff Key #9 for Spring Arbor (3/16" x 3/4") (Not Shown) .....	9916.0080	1
31A	3/4" x 25' Flextral Tru-Blue DEF Hose, 3/4" MNPT x 3/4" MNPT (Not Shown) DEF-625	9970.1501	1
31A	3/4" x 50' Flextral Tru-Blue DEF Hose, 3/4" MNPT x 3/4" MNPT (Not Shown) DEF-650	9970.1503	1
31A	3/4" x 75' Flextral Tru-Blue DEF Hose, 3/4" MNPT x 3/4" MNPT (Not Shown) DEF-675	9970.1504	1
31B	HS-35 Hose Stop (Specify 1.03" Hose O.D. for Tru-Blue Hose) (Not Shown)	9922.0200	1
34	1/2" 304 SST Welded Barstock Hub Assembly (Specify Model and Fitting)	9901.0634	1
41	1/2" 90 Degree 304 SST MxF Full Flow Swivel Joint 3000 PSI, EPDM, for DEF	9927.8529	1
63	"J" Spring w/ Arbor (Item 64D) (for DEF-625 & DEF-650) .....	9921.0030	1
63	"B" Spring w/ Arbor (Item 64D) (for DEF-675 only) (Not Shown) .....	9921.0015	1
64A	Ratchet Wheel and Hardware (Item 25B), per P64A-00120 .....	9922.0015	1
64B	Dust Cap for Inner Spring Side .....	9922.0036	1
64C	Dust Cap for Outer Spring Side .....	9922.0037	1
64D	Spring Arbor, per P64A-00110 .....	9922.0002	1
64E	"Right Hand Ratchet Locking Assembly Complete (Refer to ISO-207 for Individual Parts) .....	9922.0312	1
64E	"Left Hand Ratchet Locking Assembly Complete (For Reverse Springs ONLY) (Refer to ISO-207 for Individual Parts) .....	9922.0311	1
69	"N204 Complete Roller Assembly (for DEF-625 & DEF-650) (Refer to ISO-208 for Individual Parts) .....	9939.0111	1
69	"N206 Complete Roller Assembly (for DEF-675 only) (Refer to ISO-208 for Individual Parts) .....	9939.0113	1
70	Single Roller Arm per P70A-03020 (Specify Model) .....	9941.0030	2
91	4" Long Anodized Threaded Spacer Pipe (for DEF-625 & DEF-650) .....	9904.0308	6
91	6" Long Anodized Threaded Spacer Pipe (for DEF-675 only) .....	9904.0312	10