

Fire-Ball® Pumps

CE Identification

Label and Parts Kit

3A2181A

EN

Kit Nos.:**24M266 - 3:1 Fire-Ball Pumps****241169 - 5:1 Fire-Ball Pumps****241170 - 10:1 Fire-Ball Pump****241168 - 15:1 Fire-Ball Pumps**



See related pump instruction manual for Warnings and complete system installation and operating instructions

1. Use a permanent marker or ink pen to write the **INSTALLATION DATE** in the space provided on label (FIG. 1).
2. Circle your part number.
3. Prior to adhering the label to the pump, inspect the mounting surface to verify the surface is clean, dry and oil free. Clean and/or dry surface as needed.
4. Remove the backing from the system identification label and adhere it to the pump.

NOTE: The label should be affixed to the pump near the pump identification label.

5. Remove the backing from the laminate overlay and adhere it over the CE Identification label.



Kit No. 24M266

Part No.	Installation Date
24M262, 24M263 24M264, 24M265	
Max Air WPR	Max Fluid WPR
1.1 MPa, 10.5 bar, 150 PSI	3.7 MPa, 37 bar, 540 PSI
 Graco Inc. P.O. Box 1441 Mpls, MN 55440	
	
P/N: 16M835 rev. A	

Kit No. 241169

Part No.	Installation Date
241046, 241047, 241048, 241049, 241050, 241051 241052, 241053	
Max Air WPR	Max Fluid WPR
1.1 MPa, 10.5 bar, 150 PSI	6.2 MPa, 62 bar, 900 PSI
 Graco Inc. P.O. Box 1441 Mpls, MN 55440	
	
P/N: 194228 rev. A	

Kit No. 241170

Part No.	Installation Date
241054, 241055, 241056, 241057	
Max Air WPR	Max Fluid WPR
1.1 MPa, 10.5 bar, 150 PSI	12.4 MPa, 124 bar, 1800 PSI
 Graco Inc. P.O. Box 1441 Mpls, MN 55440	
	
P/N: 194229 rev. A	

Kit No. 241168

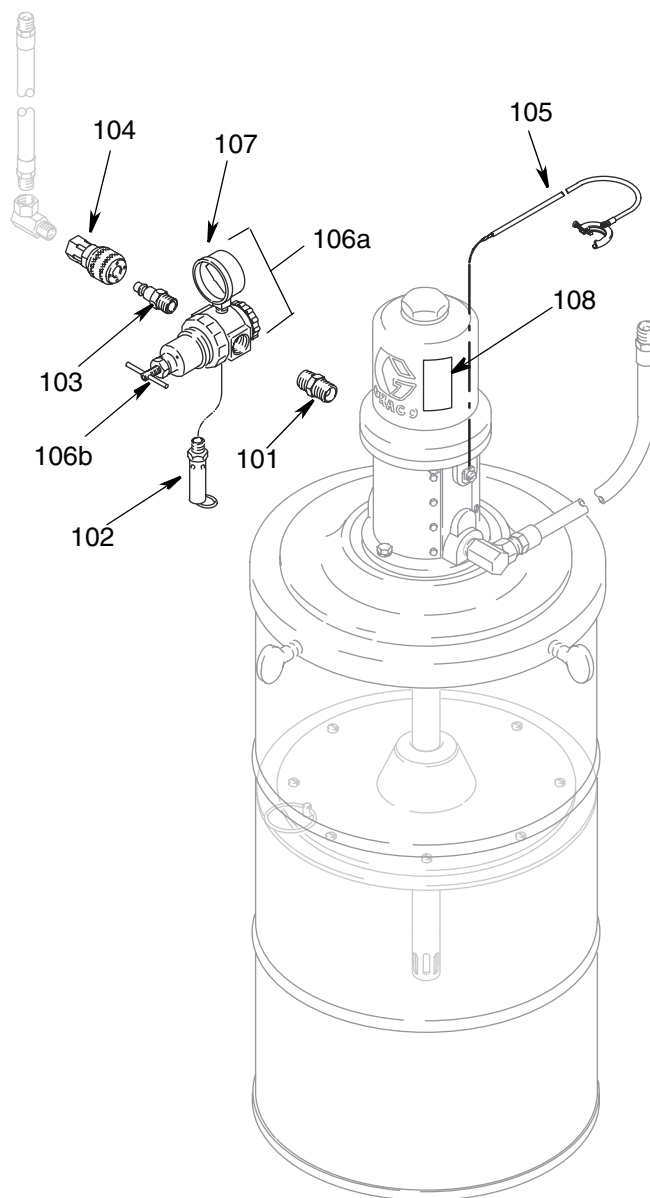
Part No.	Installation Date
241043, 241044, 241045	
Max Air WPR	Max Fluid WPR
1.1 MPa, 10.5 bar, 150 PSI	19.0 MPa, 186 bar, 2700 PSI
 Graco Inc. P.O. Box 1441 Mpls, MN 55440	
	
P/N: 194227 rev. A	

FIG. 1



Parts

Ref	Part No.	Description	Qty
101		NIPPLE, pipe	
	156849	• Kit 24M266, 241169	1
	158491	• Kits 241170	1
102	113286	VALVE, safety, 150 psi (1.03 MPA, 10.3 bar) (All Kits)	1
103		FITTING, line	
	169971	• Kit 24M266, 241169	1
	110196	• Kits 241170	1
104		COUPLER, line	
	110198	• Kit 24M266, 241169	1
	110199	• Kit 241170	1
105	222011	CLAMP (All Kits)	1
106a	109075	REGULATOR, air, with gauge (Kit 24M266, 241169)	1
106b	104266	REGULATOR, air (Kits 241170)	1
107	100960	GAUGE, air pressure (Kits 241170)	1
108		LABEL, CE (All Kits)	1



All written and visual data contained in this document reflects the latest product information available at the time of publication. Graco reserves the right to make changes at any time without notice.

Original instructions. This manual contains English. MM 3A2181

Graco Headquarters: Minneapolis
International Offices: Belgium, China, Japan, Korea

GRACO INC. P.O. BOX 1441 MINNEAPOLIS, MN 55440-1441

Copyright 2012, Graco Inc. is registered to ISO 9001

www.graco.com
 1/2012