



Standard Centrifugal Pump

Model VGH2D31-B

Size 3" x 2"

PUMP SPECIFICATIONS

Size: 3" x 2" (76 mm x 51 mm) Raised Face Flanges.

Casing: Ductile Iron.

Maximum Casing Pressure 299 psi (2062 kPa).*

Maximum Operating Pressure 250 psi (1723 kPa) at Temperatures up to 100°F (37°C) Based on System Component Limitations.*

Enclosed Type, Six Vane Impeller: Gray Iron 40.

Handles 11/32" (9 mm) Diameter Spherical Solids.

Impeller Shaft: Steel 1045.

Two Replaceable Wear Rings: Gray Iron 25.

Seal Plate: Ductile Iron.

Bypass Flush Piping.

Bearing Housing: Gray Iron 25.

Radial Bearing: Open Cylindrical Roller.

Thrust Bearing: Open Double Row Ball.

Bearing Lubrication: SAE 30 Non-Detergent Oil.

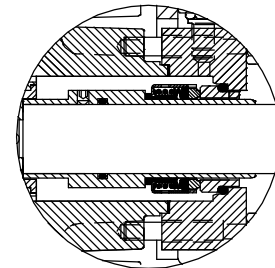
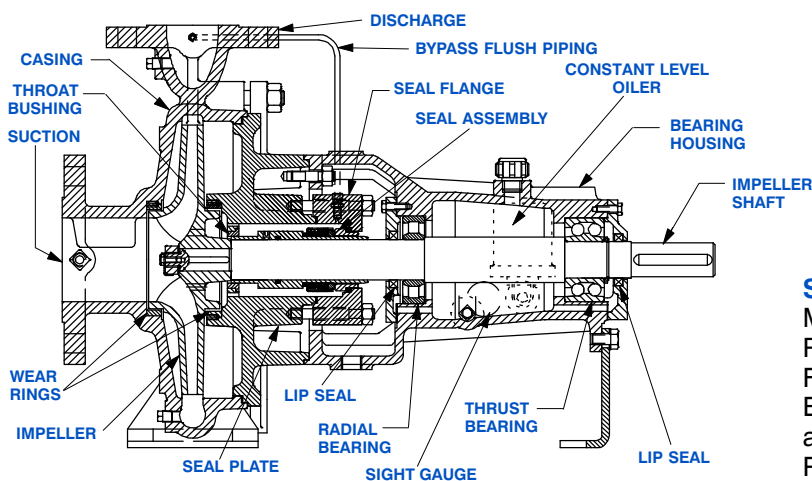
Gaskets: Nitrile Rubber.

Hardware: Standard Plated Steel.

Bearing Housing Level Oiler.

Optional Equipment: Strainer. NPT Suction and Discharge Flanges. Stainless Steel Impeller. Consult Factory for Optional Seals.

**Consult Factory for Applications Exceeding Maximum Pressure and/or Temperature Indicated.*



SEAL DETAIL

Mechanical, Self-Lubricated. Silicon Carbide Rotating and Stationary Faces. Fluorocarbon Elastomers (DuPont Viton® or Equivalent). Stainless Steel 316 Shaft Sleeve and Spring. Maximum Temperature of Liquid Pumped, 160°F (71°C).*



GORMAN-RUPP PUMPS

www.grpumps.com

Specifications Subject to Change Without Notice

Printed in U.S.A.

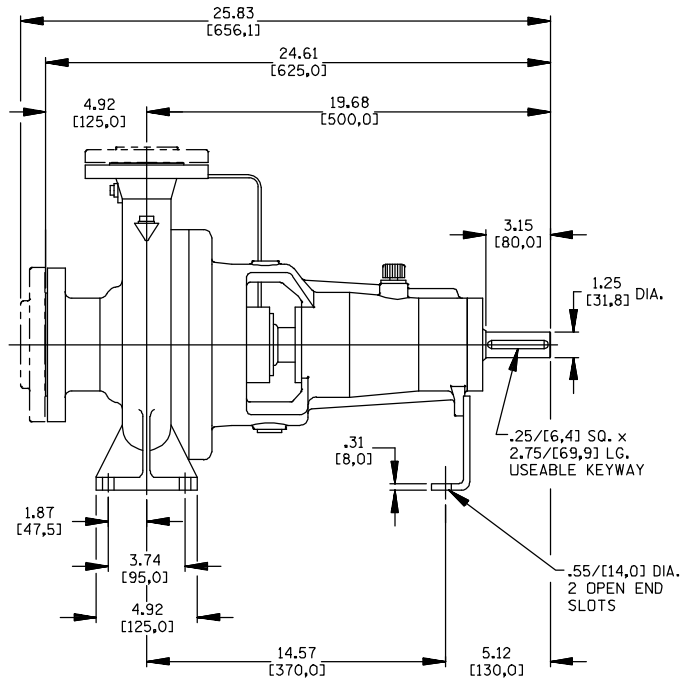
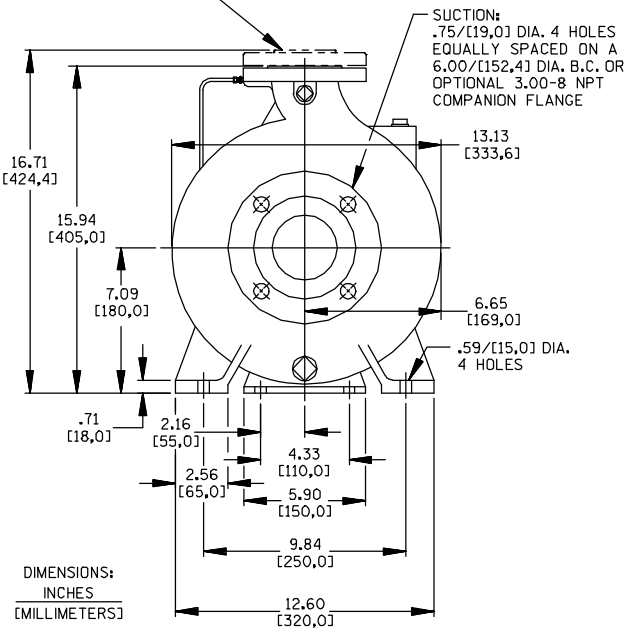
Specification Data

SECTION 70, PAGE 261

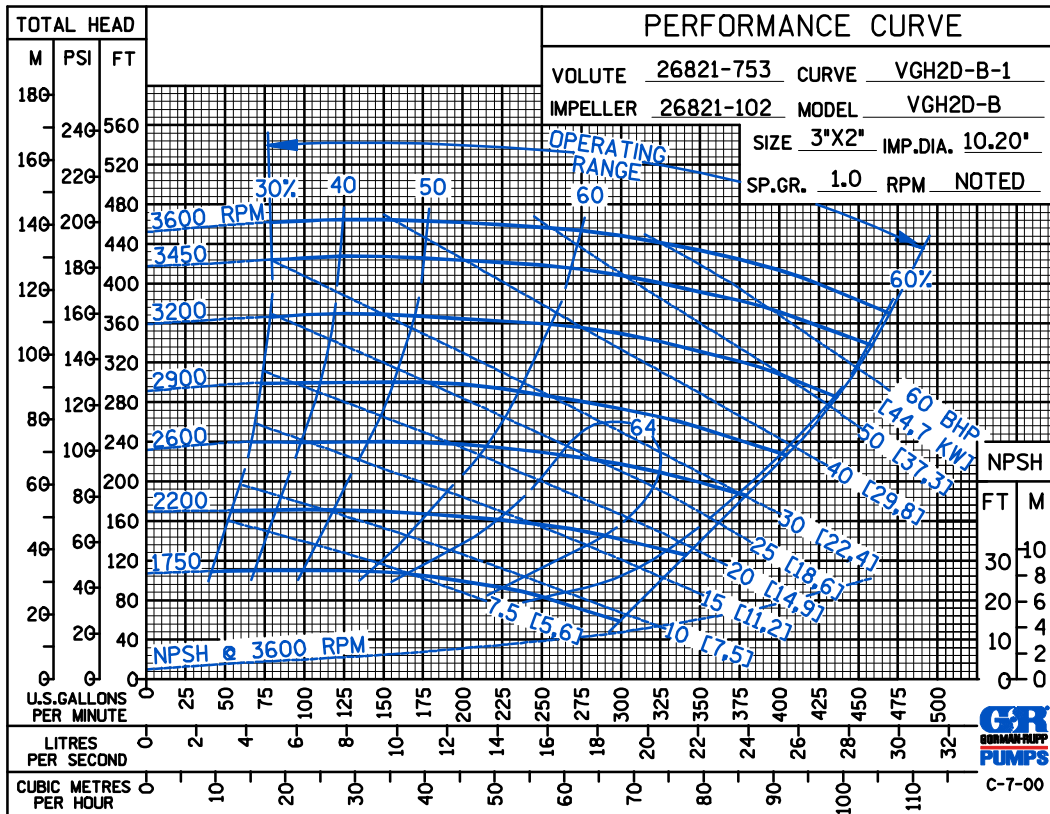
APPROXIMATE DIMENSIONS and WEIGHTS

NET WEIGHT: 160 LBS. (73 KG.)
SHIPPING WEIGHT: 170 LBS. (77 KG.)
EXPORT CRATE SIZE: 7.9 CU. FT. (0,22 CU. M.)

DISCHARGE: .75/[19,0] DIA. 4 HOLES EQUALLY SPACED ON A 4.75/[120,6] DIA. B.C. OR OPTIONAL 2.00-11.5 NPT COMPANION FLANGE



DIMENSIONS:
INCHES
[MILLIMETERS]



60 HERTZ PERFORMANCE BASED ON WATER



GORMAN-RUPP PUMPS

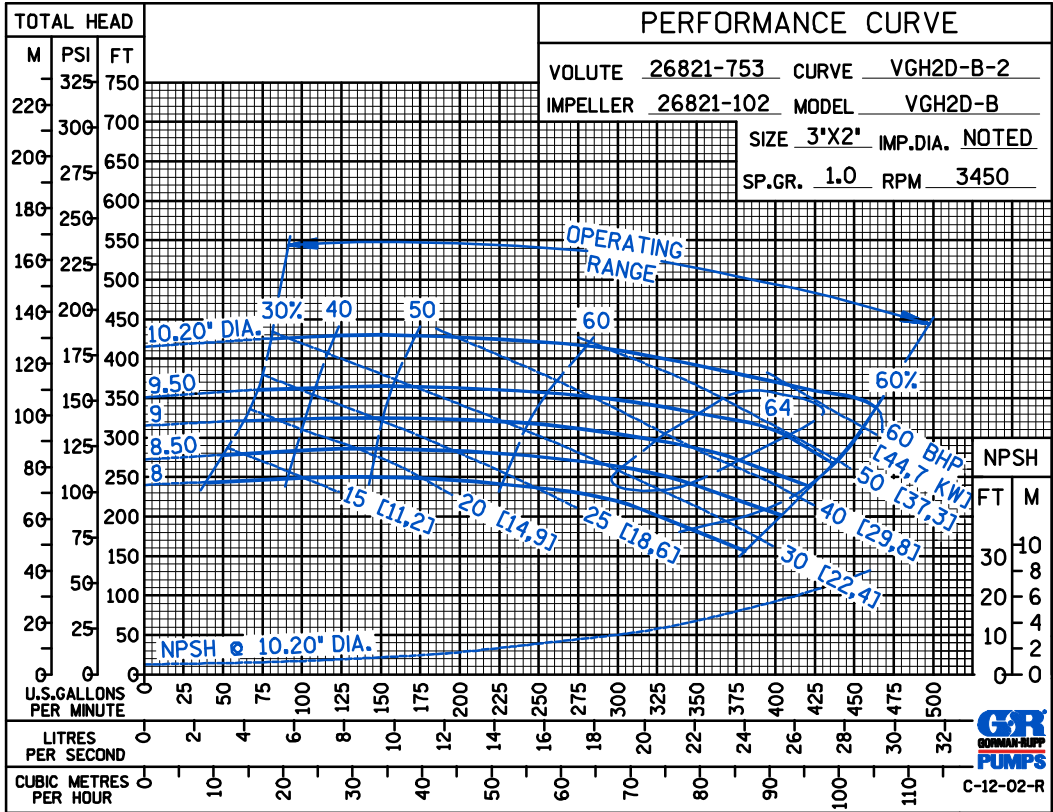
www.grpumps.com

Specifications Subject to Change Without Notice

Printed in U.S.A.

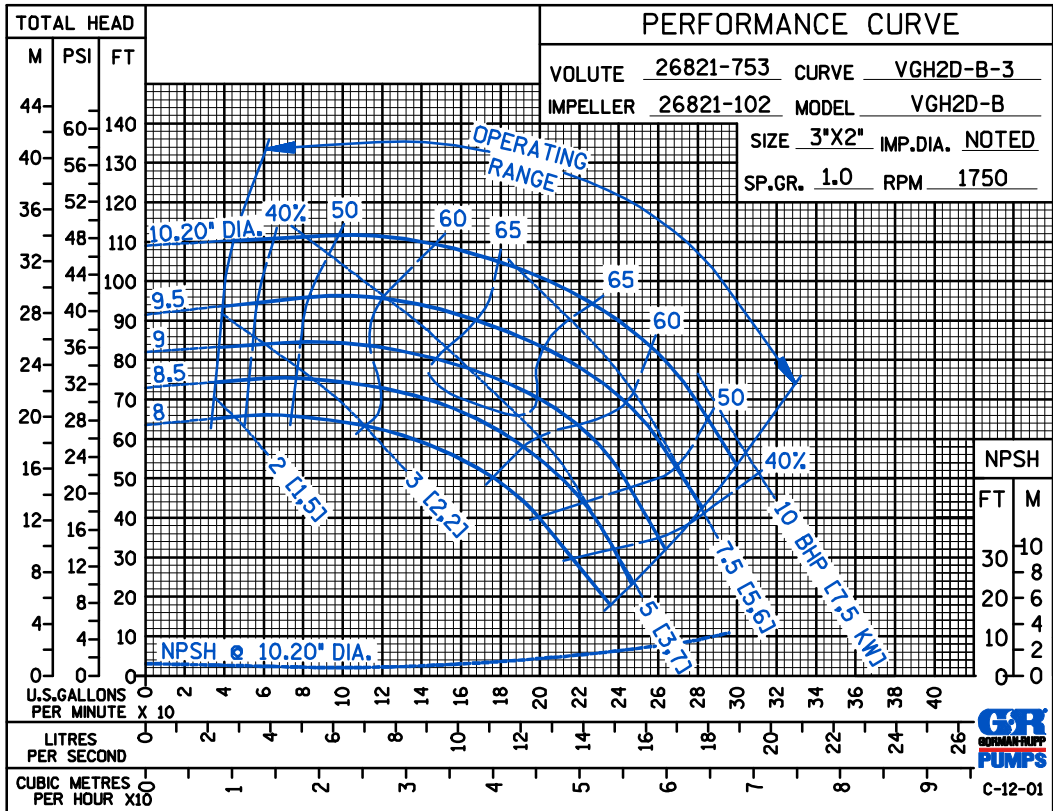
60 HERTZ
PERFORMANCE
BASED ON
WATER

TRIMMED
IMPELLER



60 HERTZ
PERFORMANCE
BASED ON
WATER

TRIMMED
IMPELLER



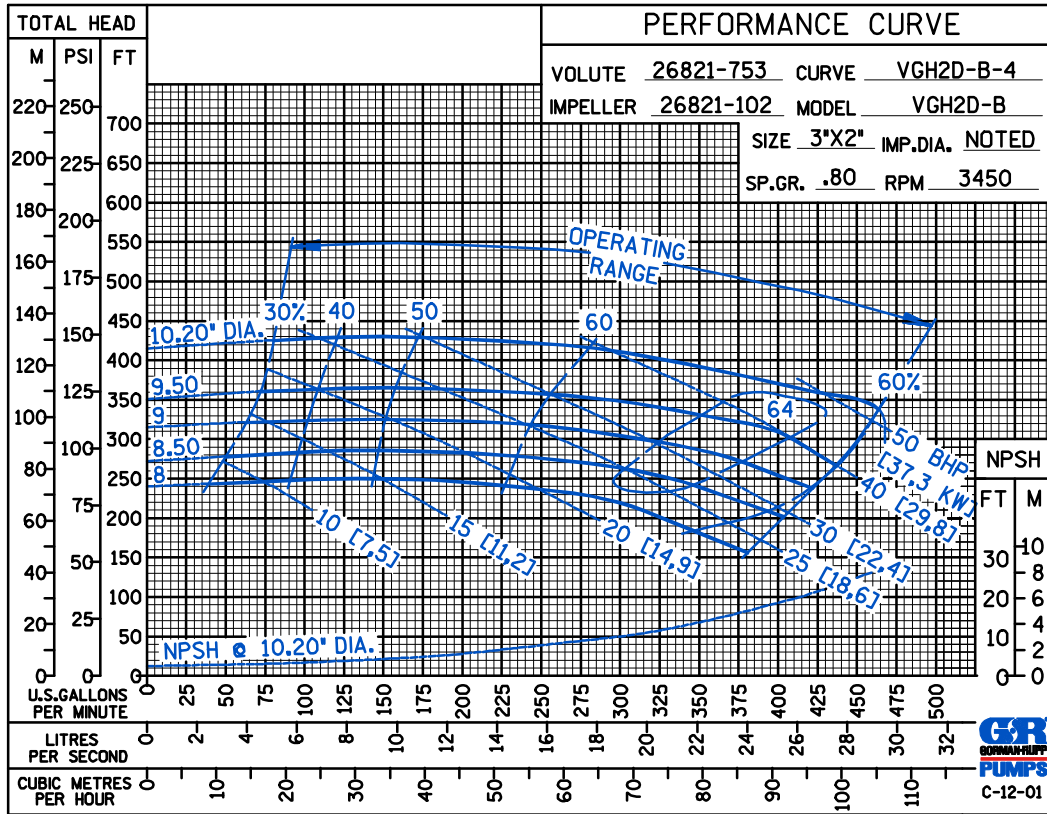
GORMAN-RUPP PUMPS

www.grpumps.com

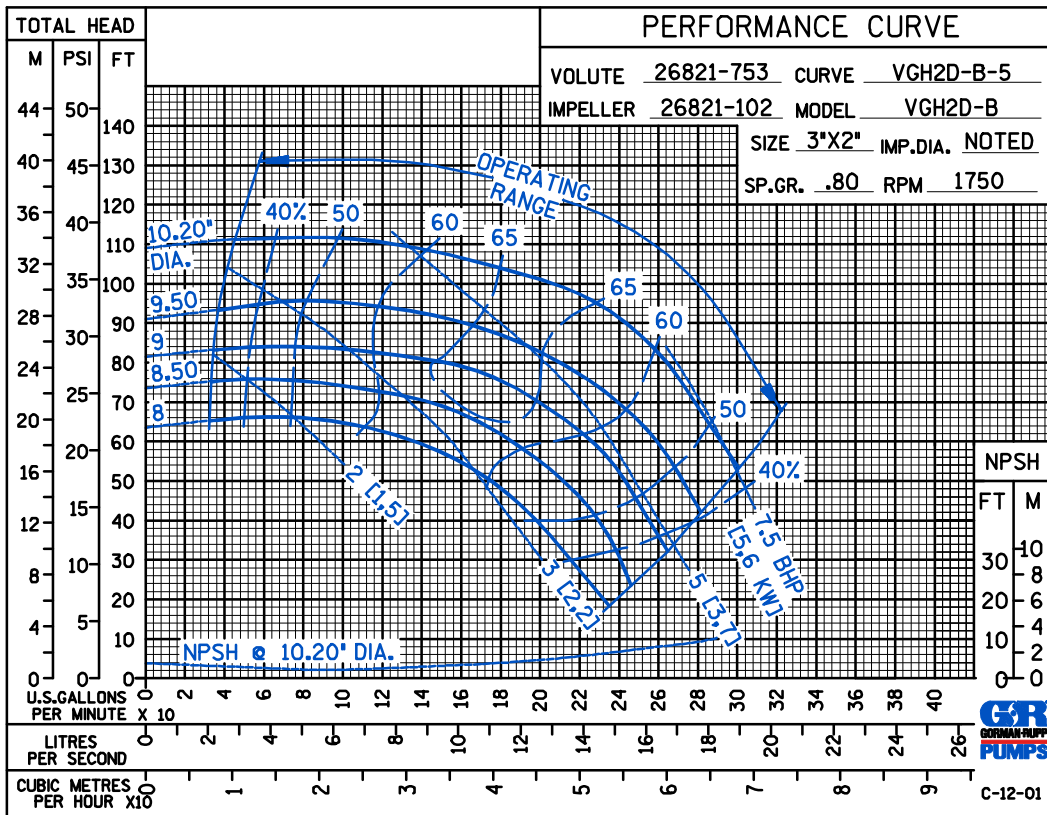
Specifications Subject to Change Without Notice

Printed in U.S.A.

60 HERTZ
PERFORMANCE
BASED ON
PETROLEUM
TRIMMED
IMPELLER



60 HERTZ
PERFORMANCE
BASED ON
PETROLEUM
TRIMMED
IMPELLER



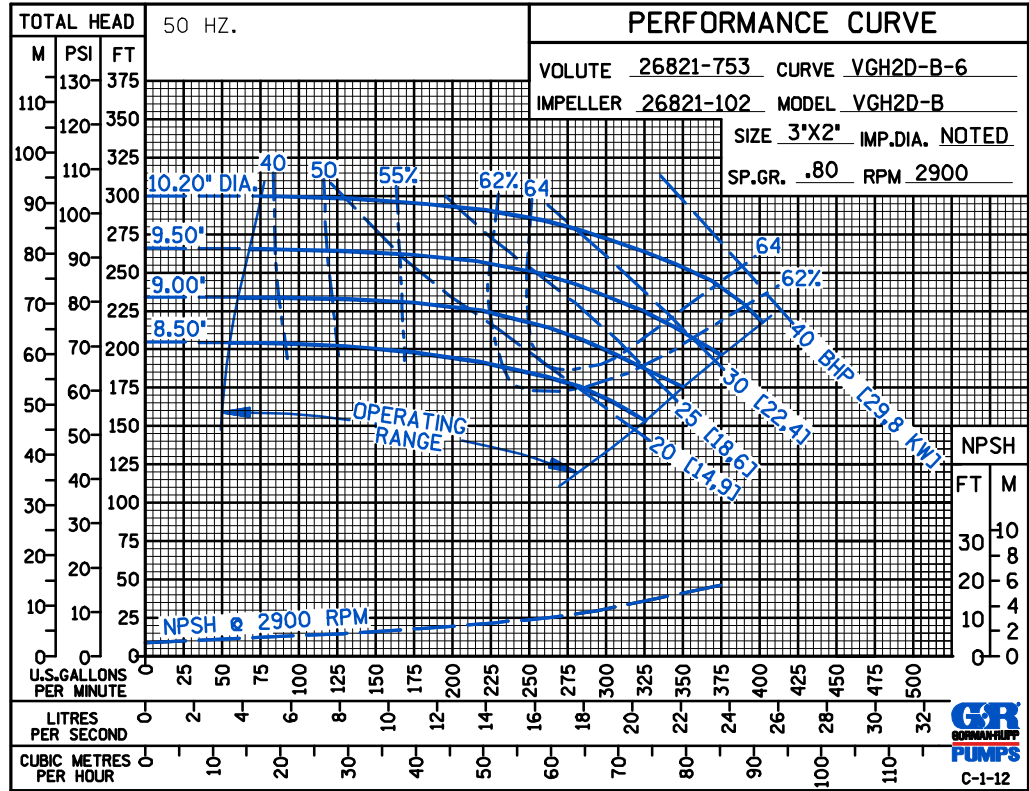
GORMAN-RUPP PUMPS

www.grpumps.com

Specifications Subject to Change Without Notice

Printed in U.S.A.

50 HERTZ
PERFORMANCE
BASED ON
PETROLEUM
TRIMMED
IMPELLER



GORMAN-RUPP PUMPS

www.grpumps.com

Specifications Subject to Change Without Notice

Printed in U.S.A.