

Self Priming Centrifugal Pump

Model 82D1-L70W FT4-X



Size 2" x 2"

Total Head		Capacity of Pump in U.S. Gallons per Minute (GPM) at Continuous Performance			
P.S.I.	Feet				
43.4	96	34	34	34	34
43.4	90	68	80	80	80
34.7	80	78	101	104	104
26.0	70	85	110	123	123
26.0	60	92	114	129	137
8.7	50	96	116	131	151
Suction Lift		20'	15'	10'	5'



PUMP SPECIFICATIONS

- Size:** 2" x 2" (51 mm x 51 mm) NPT - Female.
- Casing:** Aluminum 356-T6 w/Gray Iron 30 Cutwater Insert. Maximum Operating Pressure 68 psi 469 kPa).*
- Semi-Open Type, Four Vane Impeller:** Aluminum 356-T6 Handles 5/8" (15,8 mm) Diameter Spherical Solids.
- Replaceable Wear Plate:** Carbon Steel 1026.
- Intermediate Bracket:** Gray Iron 30.
- Seal:** Type 31, Mechanical, Self-Lubricated. Silicon Carbide Rotating and Stationary Faces. Fluorocarbon Elastomers (DuPont Viton® or Equivalent). Stainless Steel 18-8 Cage and Spring. Maximum Temperature of Liquid Pumped 160°F (71°C).*
- Shaft Sleeve:** Stainless Steel 304.
- Flap Valve:** Gray Iron 30 and Steel w/Buna-N Coated Nylon Gasket.
- Flange:** Gray Iron 30.
- Gaskets:** Cork, Vegetable Fiber.
- Hardware:** Standard Plated Steel.
- Standard Equipment:** 90° Ductile Iron Discharge Elbow. Rollover Base with Rubber Feet.
- Optional Equipment:** Wheel Kit w/Semi-Pneumatic Tires.

**Consult Factory for Applications Exceeding Maximum Pressure and/or Temperature Indicated.*

WARNING!

This unit is designed to handle volatile, flammable liquids. To reduce the risk of fire or explosion, do not operate near open flames, sparks, cigarettes or any other ignition source. Do not operate the unit in an explosive atmosphere or unventilated area. Connect the attached ground cable to the nearest grounding point on the tank being filled. Shut off the engine and allow it to completely cool before refueling.

ENGINE SPECIFICATIONS

- Model:** Yanmar L70W.
- EPA Tier:** Final Tier 4.
- Type:** Four Cycle, Air Cooled, Diesel Engine.
- Displacement:** 18.7 Cu. In. (320 cc).
- Lubrication:** Forced Circulation.
- Air Cleaner:** Dry Type.
- Fuel Tank:** .87 U.S. Gals. (3,3 liter).
- Full Load Operating Time:** 1.4 Hrs.
- Starter:** Rope Rewind.
- Standard Features:** 90° Exhaust Deflector. Exhaust Silencer Muffler w/Guard. Grounding Wire.

YANMAR PUBLISHED PERFORMANCE:
 Maximum Continuous Net BHP
 5.8 (4.3 kW) @ 3600 RPM



John M. Ellsworth Co., Inc.

P.O. Box 240072
 8700 West Bradley Road
 Milwaukee, WI 53224

800-333-3331 **PHONE**
 800-563-8848 **FAX**

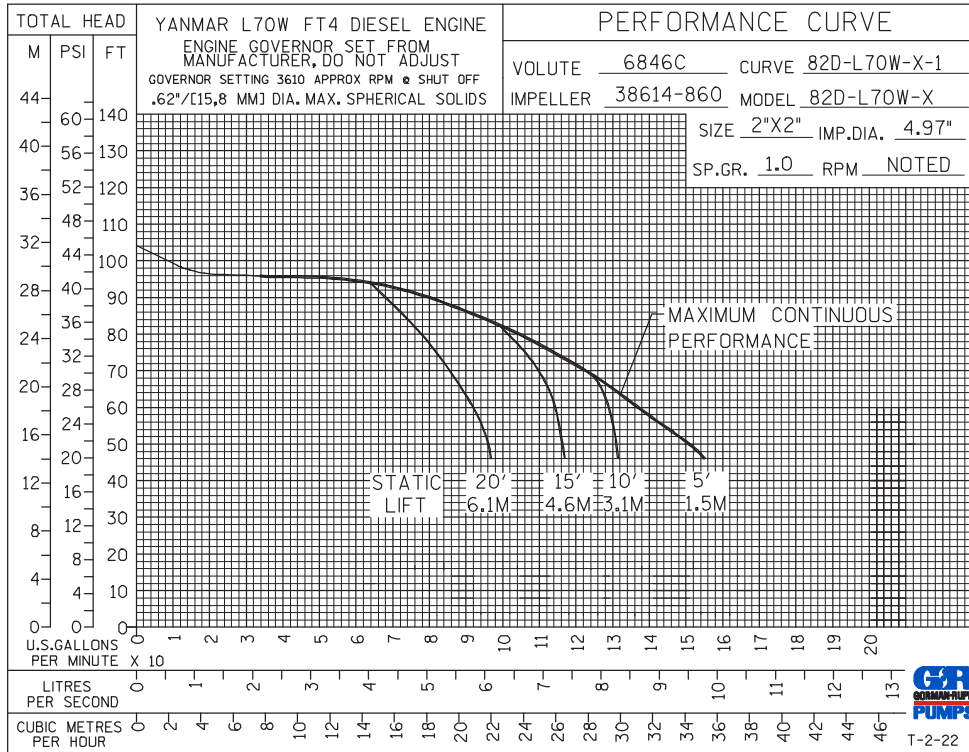
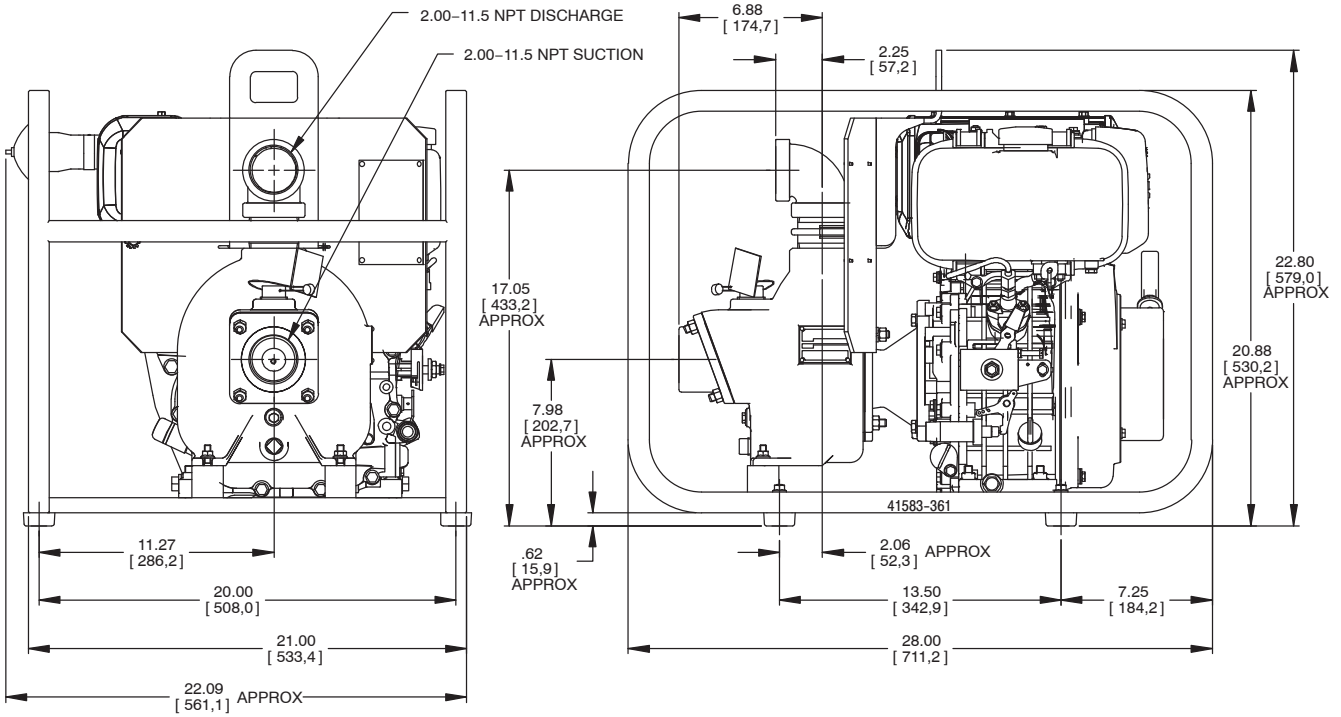
info@jmesales.com **E-MAIL**
 www.JMEsales.com **WEB**

Specification Data

SECTION 20, PAGE 220

APPROXIMATE DIMENSIONS and WEIGHTS

NET WEIGHT: 149 LBS. (67,6 KG.)
SHIPPING WEIGHT: 155 LBS. (70,3 KG.)
EXPORT CRATE SIZE: 12.9 CU. FT. (0,4 CU. M.)
 WHEEL KIT ADD 22 LBS. (10 KG.); SHIPPING CRATE (SEPARATE) 3 CU. FT. (0,1 CU. M.).



John M. Ellsworth Co., Inc.

A John M. Ellsworth Company

P.O. Box 240072
 8700 West Bradley Road
 Milwaukee, WI 53224

800-333-3331 **PHONE**
 800-563-8848 **FAX**

info@jmesales.com **E-MAIL**
 www.JMESales.com **WEB**