



UQD

QUICK COUPLINGS FOR COOLING SYSTEMS

Edition. 21.2

SS Stainless Steel

- Type: Quick Couplings
- Models: UQD
Quick couplings for cooling
- Sizes: DN02 - DN04 - DN06 - DN08
- Pressure: up to PN10



John M. Ellsworth Co., Inc.

P.O. Box 240072
8700 West Bradley Road
Milwaukee, WI 53224

800-333-3331 PHONE
info@jmesales.com E-MAIL
www.JMEsales.com WEB

A John M. Ellsworth Company

CODE DESCRIPTION STRUCTURE

STAINLESS STEEL

QC	1/2	M/F	DN12,5	4	F
----	-----	-----	--------	---	---

Type of coupling

UQD

Ends

SAE J1926-2 BARB
(SAE MALE) FITTING

UNF 7/16"-20 1/4"

UNF 9/16"-18 3/8"

UNF 3/4"-16 1/2"

UNF 7/8"-14 5/8"

MALE

FEMALE

DN/ISO

3,2

6,3

10

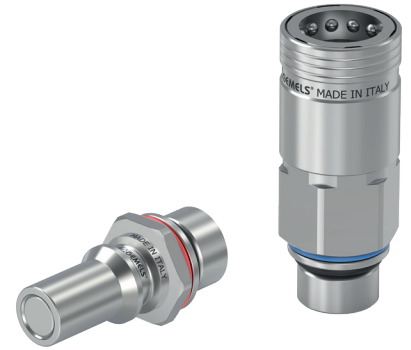
12,5

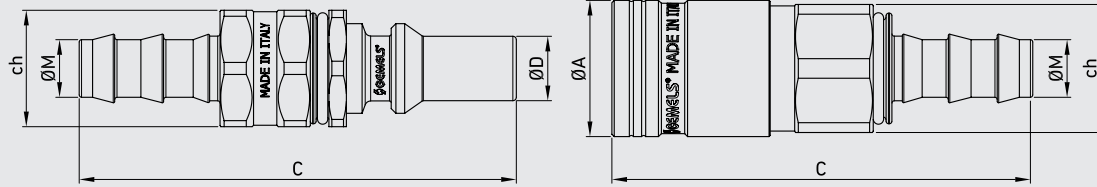
Body Material

● 4 = 1,4404

Seal material

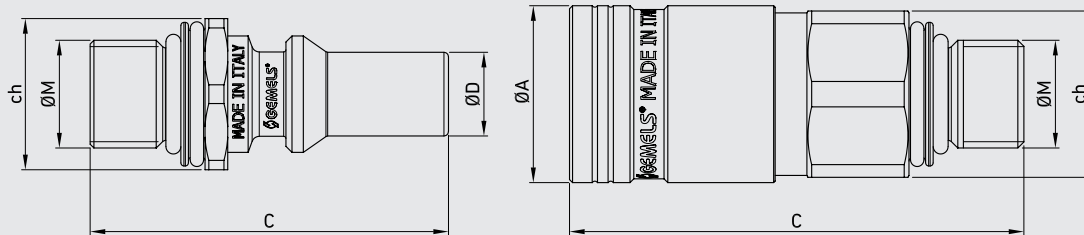
● F = EPDM




**QUICK COUPLINGS UQD
MALE HOSE BARB**
SS

Stainless Steel

TYPE	DN	PN		ØA	C	ØD	ch	ØM	WEIGHT	ITEM CODE
QC UQD02 HOSE 1/4 MALE	0,2	MPa 1	mm -	58,5	6,65	14	HOSE 1/4	kg 0,3	NC59K01S000	
		Psi 145	inch -	2,30	0,26	0,55		lb 0,66		
QC UQD02 HOSE 1/4 FEMALE	0,2	MPa 1	mm 18,5	55	-	14	HOSE 1/4	kg 0,1	NC60K01S000	
		Psi 145	inch 0,73	2,17	-	0,55		lb 0,22		
QC UQD04 HOSE 3/8 MALE	0,4	MPa 1	mm -	75	11,07	20	HOSE 3/8	kg 0,42	NC59K02S000	
		Psi 145	inch -	2,95	0,44	0,79		lb 0,93		
QC UQD04 HOSE 3/8 FEMALE	0,4	MPa 1	mm 23,5	72,5	-	22	HOSE 3/8	kg 0,24	NC60K02S000	
		Psi 145	inch 0,93	2,85	-	0,87		lb 0,53		
QC UQD06 HOSE 1/2 MALE	0,6	MPa 1	mm -	81,5	14,3	24	HOSE 1/2	kg 0,65	NC59K03S000	
		Psi 145	inch -	3,21	0,56	0,94		lb 1,43		
QC UQD06 HOSE 1/2 FEMALE	0,6	MPa 1	mm 27,5	83,5	-	25	HOSE 1/2	kg 0,4	NC60K03S000	
		Psi 145	inch 1,08	3,29	-	0,98		lb 0,88		
QC UQD08 HOSE 5/8 MALE	0,8	MPa 1	mm -	100	17,48	28	HOSE 5/8	kg 0,85	NC59KA3S000	
		Psi 145	inch -	3,94	0,69	1,10		lb 1,87		
QC UQD08 HOSE 5/8 FEMALE	0,8	MPa 1	mm 32,5	97,5	-	30	HOSE 5/8	kg 0,6	NC60KA3S000	
		Psi 145	inch 1,28	3,84	-	1,18		lb 1,32		



QUICK COUPLINGS UQD SAE J1926-2 (SAE MALE)

SS
Stainless Steel

TYPE	DN	PN	ØA	C	ØD	ch	ØM	WEIGHT	ITEM CODE
QC UQD02 SAE4 M MALE	0,2	MPa 1	mm -	35	6,65	14	UNF 7/16-20	kg 0,3	NC59T00S000
		Psi 145	inch -	1,38	0,26	0,55		lb 0,66	
QC UQD02 SAE4 M FEMALE	0,2	MPa 1	mm 18,5	45,5	-	16	UNF 7/16-20	kg 0,1	NC60T00S000
		Psi 145	inch 0,73	1,79	-	0,63		lb 0,22	
QC UQD04 SAE6 M MALE	0,4	MPa 1	mm -	47,5	11,07	20	UNF 9/16-18	kg 0,42	NC59T02S000
		Psi 145	inch -	1,87	0,44	0,79		lb 0,93	
QC UQD04 SAE6 M FEMALE	0,4	MPa 1	mm 23,5	60	-	22	UNF 9/16-18	kg 0,24	NC60T02S000
		Psi 145	inch 0,93	2,36	-	0,87		lb 0,53	
QC UQD06 SAE8 M MALE	0,6	MPa 1	mm -	52,5	14,3	24	UNF 3/4-16	kg 0,65	NC59T03S000
		Psi 145	inch -	2,07	0,56	0,94		lb 1,43	
QC UQD06 SAE8 M FEMALE	0,6	MPa 1	mm 27,5	68	-	25	UNF 3/4-16	kg 0,4	NC60T03S000
		Psi 145	inch 1,08	2,68	-	0,98		lb 0,88	
QC UQD08 SAE10 M MALE	0,8	MPa 1	mm -	57,5	17,48	28	UNF 7/8-14	kg 0,85	NC59TA3S000
		Psi 145	inch -	2,26	0,69	1,10		lb 1,87	
QC UQD08 SAE10 M FEMALE	0,8	MPa 1	mm 32,5	75	-	30	UNF 7/8-14	kg 0,6	NC60TA3S000
		Psi 145	inch 1,28	2,95	-	1,18		lb 1,32	