



A **VONTIER** COMPANY

# AtlasX

## Next-Gen Commercial Refueling

### 9862G Diesel Exhaust Fluid (DEF) Dispensers

Gasboy makes it simple to integrate the new AtlasX 9862G diesel exhaust fluid (DEF) dispensers into your fuel management system.

The AtlasX DEF dispenser comes in two models: Cold Weather and Warm Weather. The Cold Weather DEF dispenser is designed to prevent DEF freezing and crystallization with a heated cabinet. Gasboy DEF dispensers offer advanced data management capabilities, allowing customers to track and monitor DEF usage, inventory and other operational data for better management and decision-making. Gasboy DEF dispensers can be integrated into various types of DEF container systems based on their specific needs and preferences.

Both models have stainless steel hydraulics to protect against corrosion and use an innovative, Weight and Measures approved Krohne Magmeter which measures DEF accurately and reliably. Gasboy electronic DEF dispenser is equipped with advanced electronic metering technology, ensuring accurate and precise fuel measurements.



\*Cold Weather DEF Model Pictured

Model number	Description	Type	Hoses	Products	Register	Flow Rating
9862GX	Cold Weather	Dispenser	1	1	Elec	
9862GX	Warm Weather	Dispenser	1	1	Elec	
9862GX	Warm Weather Front	Dispenser	1	1	Elec	

Feature	Description	Cold Weather	Warm Weather
Approvals	Safety, MET and cMET Listed W&M, NCWM, Measurement Canada (MC)	S S	S S
Working Pressure	30 psi (normal) 50 psi (maximum)	S	S
Unit of Measure	Gallons/Liters selectable	S	S
Filters	Strainer	Strainer	Strainer
Piping	Internal fuel piping	3/4"	3/4"
Discharge	Hose connection-NPT	1" BSPP	1" BSPP
Nozzle Positions	Side load Front load	- S	S O
Inlet	Island connection-NPT	1" BSPP	1" BSPP
Heater	Dual stage heater for DEF hydraulic cabinet	S	-
Housing	G30 galvanized steel	13GA	13GA
Panels/Sheathing	Lockable removeable-precoated galvanized steel 2mm thick	S	S
	Lockable removeable-stainless steel- 22 gauge	O	O
Junction Box	Field wiring junction box	S	S
Computer/Register	Electronic register (volume only display)	S	S
Meter	Krohne Magmeter Mass Flow Meter with electronic calibration	S	S
Solenoid Valve	2-stage valve for Preset Operation (PP)	3/4"	3/4"
Totalizers	Non-settable electro-mechanical	O	O
Connectivity	2 Wire Communication Protocol Pulse output, Dual Channel	S	S
		O	O

## Operating Environment

Environment	Range		
Cold Weather	-22°F (-30° C) to 131 °F (55° C)	S	-
Warm Weather	15°F (-9.4° C) to 131 °F (55° C)	-	S



## 1 Year Warranty

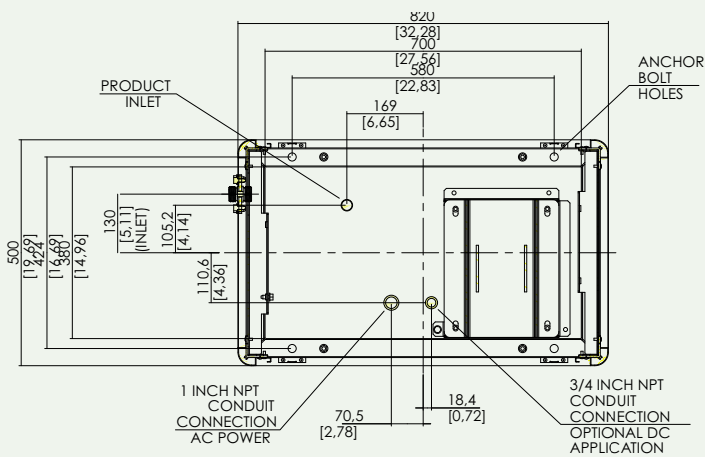
Commercial and Retail Pumps and Dispensers are warranted against defects in material and workmanship for 12 months from date of installation or 24 months from date of original invoice, whichever occurs first. The PRIME factory installed fuel management system electronics are also warranted against defects in material and workmanship for 12 months from date of installation or 24 months from date of original invoice. Warranty coverage for AtlasX and AtlasX PRIME includes parts and labor. Field-installed kits are warranted against defects in material and workmanship for 12 months from date of installation or 24 months from date of original invoice, whichever occurs first. The warranty coverage is for parts only.

S = Standard  
O = Optional  
- = Not available

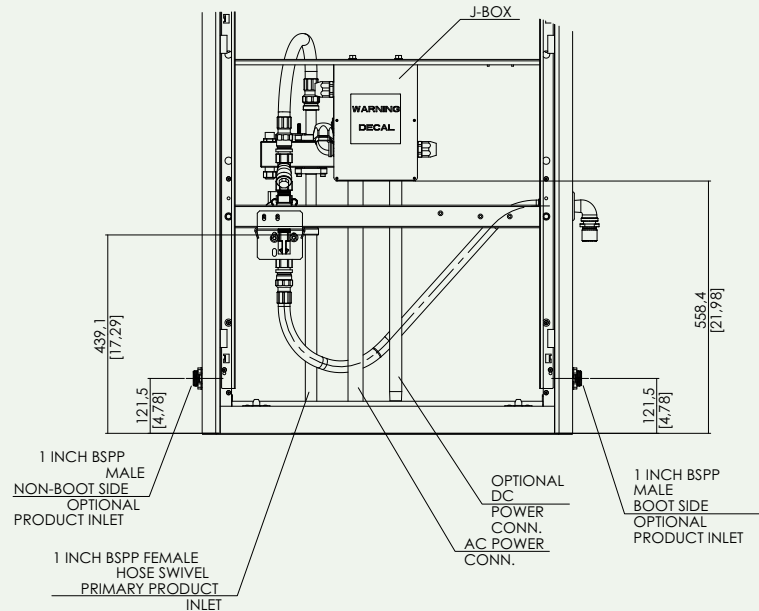
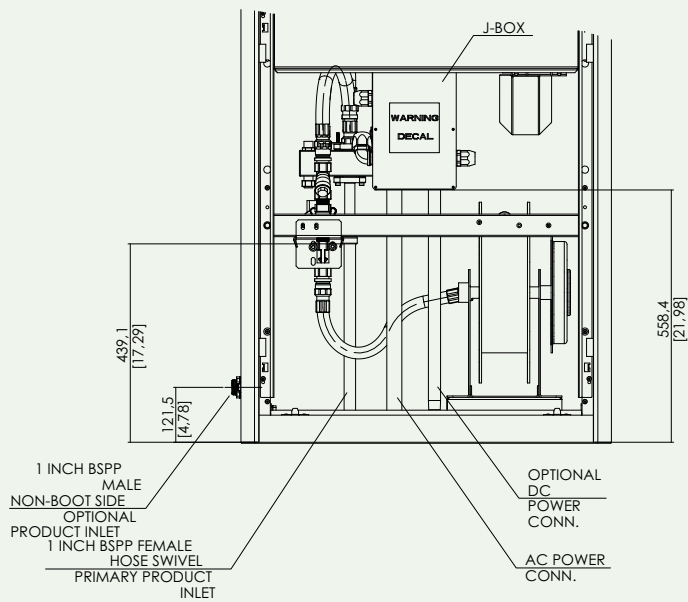
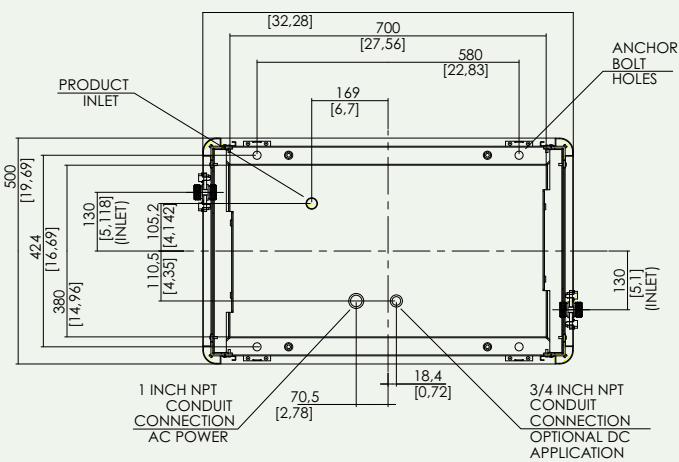
# Technical Specification and Foundation Layout

Measurements in mm (Measurements in inches)

9862GXZ



9862GXWW  
9862GXZWW



# AtlasX Key Enhancements



## Best-in-class engineering

Krohne Magmeter delivers industry leading accuracy and comes equipped on both AtlasX DEF dispenser models.



## Modern design

Cold weather models are versatile and incorporate an improved heat-insulated cabinet with internal hose reel to protect from freezing and crystallization.



## Future-proof

Modern Encore Electronics platform provides the foundation for future applications (remote diagnostics, remote software updates, secure payments etc.)

### COLD WEATHER

### WARM WEATHER

