



QM40-RD
115-volt / 230-volt
Remote Dispenser
2 - 40 GMP (15.14 - 151.42 L/min)

MODELS: QM40-RD

Thank you for choosing Great Plains Industries as your preferred brand! Our team places innovation, precision, and care into every product made, providing you with the best total value. This manual contains critical product information.

Save these instructions and observe all safety information to prevent personal injury or property damage. See back cover for warranty and customer support details.

DO NOT RETURN THIS PRODUCT TO THE STORE!

Please contact Great Plains Industries, Inc. before returning any product. If you are missing parts, or experience problems with your installation, contact our Customer Support Department. We will be happy to assist you.

EN

¡Gracias por elegir Great Plains Industries como su marca preferida! Nuestro equipo pone innovación, precisión y cuidado en cada producto fabricado, proporcionándole el mejor valor total. Este manual contiene información crítica del producto. Guarde estas instrucciones y observe toda la información de seguridad para evitar lesiones personales o daños materiales. Consulte la contraportada para obtener detalles sobre la garantía y el soporte al cliente.

¡NO DEVUELVA ESTE PRODUCTO A LA TIENDA!

Comuníquese con Great Plains Industries, Inc. antes de devolver cualquier producto. Si le faltan piezas o experimenta problemas con su instalación, comuníquese con nuestro Departamento de atención al cliente. Estaremos encantados de ayudarle.

ES

Merci d'avoir choisi Great Plains Industries comme votre marque préférée! Notre équipe place l'innovation, la précision et le soin dans chaque produit fabriqué, vous offrant la meilleure valeur totale. Ce manuel contient des informations critiques sur le produit. Conservez ces instructions et respectez toutes les informations de sécurité pour éviter les blessures corporelles ou les dommages matériels.

Consultez la couverture arrière pour obtenir des détails sur la garantie et le support client.

NE PAS RENVOYER CE PRODUIT AU MAGASIN !

Veuillez contacter Great Plains Industries, Inc. avant de retourner un produit. S'il vous manque des pièces ou si vous rencontrez des problèmes avec votre installation, contactez notre service d'assistance à la clientèle. Nous serons heureux de vous aider.

FR

Call / Llamar / Appel: 800-835-0113 or 316-686-7361

Email: gpisales@gpilains.com

Website: gpi.net

SAVE / GUARDAR / CONSERVEZ

Model / Modelo / Modèle #: _____

Serial / Serie / Série #: _____

Date / Fecha / Date: _____

BEFORE YOU BEGIN

This manual covers all models of the QM40-RD Remote Dispenser, except where noted.

Fueling Requirements

- All models of the Remote Dispenser are UL listed power operated petroleum dispensing devices designed for use with gasoline, diesel, and kerosene fuel.
- Do not use this Remote Dispenser for dispensing any fluids other than those for which it was designed. Using the dispenser with other fuels can damage components and void the dispenser warranty.
- The Remote Dispenser IS NOT supplied with a pump. A UL Listed pump, that does not exceed the electrical rating of the dispenser switch, is to be supplied by the customer.
- **⚠ CAUTION** An upstream, in-line mesh strainer must always be installed when operating this meter; otherwise, particles may enter the meter chamber and disrupt the smooth operation of the oval gears.
- The Remote Dispenser comes equipped with a GPRO® QM Meter with reset knob. The QM meter is for non-resale applications and has $\pm 0.5\%$ accuracy at 2-40 GPM (8-150 L/min) flow rate.

Power Source Requirements

- The Remote Dispenser can operate with a 115-volts AC (60Hz) or 230-volts AC (60Hz) pump. It has an integral safety shutoff solenoid valve that opens simultaneously when the pump is turned on with the dispenser switch lever.

Tools Needed

- Adjustable Wrench, Pipe Wrench, Socket Set, Phillips Head Screwdriver, Torque Wrench (in/lb) and thread tape or a pipe thread sealing compound approved for use with petroleum fuels



UNPACKING

Contents



- (1) QM40-RD-G or (1) QM40-RD-L Remote Dispenser
- (1) Nozzle cover and hardware
- (1) 1 inch 90 degree Elbow Fitting, and (1) 3/4 inch reducer bushing
- (1) Reset Knob, (1) Unleaded Fuel Gear, (1) Y-Strainer, and (1) 5 mm L-key Hex Wrench

Inspect

- After unpacking the unit, inspect carefully for any damage that may have occurred during transit. Check for loose, missing or damaged parts. Shipping damage claims must be filed with carrier.
- Review General Safety Instructions and all Caution, Warning, and Danger statements as shown.



GENERAL SAFETY INSTRUCTIONS

IMPORTANT: It is your responsibility to:

- Know and follow applicable national, state and local safety codes pertaining to installing and operating electrical equipment for use with flammable liquids.
- Know and follow all safety precautions when handling petroleum fuels.
- Ensure that all equipment operators have access to adequate instructions concerning safe operating and maintenance procedures.

Observe all safety precautions concerning safe handling of petroleum fuels.

⚠ WARNING *To ensure safe operation, all remote dispensing systems must be properly grounded. Proper grounding means a continuous metal-to-metal contact from one component to the next, including tank, bung, pump, dispenser, filter, hose and nozzle. Care should be taken to ensure proper grounding during initial installation and after any service or repair procedures.*

⚠ DANGER *To prevent physical injury or property damage, observe precautions against fire or explosion when dispensing fuel. Do not operate the system in the presence of any source of ignition including running or hot engines, lighted tobacco products, gas or electric heaters, or any type of electronic device. A spark can ignite fuel vapors.*

⚠ DANGER *Observe precautions against electrical shock when operating the system. Serious or fatal shock can result from operating electrical equipment in damp or wet locations.*

⚠ DANGER *Observe precautions against electrical shock when servicing the pump. Always disconnect power before repairing or servicing. Never apply electrical power to the system when any of the coverplates are removed.*

⚠ WARNING *Avoid prolonged skin contact with petroleum fuels. Use protective goggles, gloves and aprons in case of splashing or spills. Change saturated clothing and wash skin promptly with soap and water.*

⚠ WARNING *This dispenser is designed for use only with thin viscosity petroleum fuels such as diesel and kerosene. Do not use this dispenser for dispensing any other fluids other than those for which it was designed. To do so may damage system components and will void the warranty.*

⚠ WARNING *This pump shall not be used for pumping fuel or other liquids into aircraft.*

⚠ CAUTION *An upstream, in-line mesh strainer must always be installed when operating this meter; otherwise, particles may enter the meter chamber and disrupt the smooth operation of the oval gears.*

⚠ CAUTION *If using solvent to clean pump components or tank, observe the solvent manufacturer's recommendations for safe use and disposal.*

SPECIFICATIONS

QM40-RD METER

The QM40-RD Remote Dispenser is designed for use with gasoline, diesel, and kerosene fuel. All models are designed for permanent mounting on vented storage tanks, either in-ground or above ground.

Unit of Measure	U.S. Gallons or Litres
Flow Range	2 to 40 GPM (15.14-151.42 L/min)
Typical Accuracy (Factory Set) ¹	Diesel: $\pm 0.5\%$ (15-30 GPM/57-113 L/min) $\pm 1.0\%$ all other flowrates
	Unleaded: $+0.5\%$ to -1.5% (15-30 GPM/57-113 L/min) $\pm 2.0\%$ all other flowrates
Typical Accuracy (Field/Customer Set) ¹	Diesel: $\pm 0.25\%$ at a given flow (15-30 GPM/57-113 L/min) $\pm 0.5\%$ all other given flows
	Unleaded: $\pm 0.5\%$ at a given flow (2-23 GPM/8-87 L/min) $\pm 0.5\%$ at a given flow (23-40 GPM/87-150 L/min) ²
Type	Positive Displacement Oval Gear
Housing Material	Aluminum
Maximum Working Pressure	50 PSI (3.4 bar)
Inlet/Outlet Fitting Size	1-inch NPT
Maximum Batch Total	999.9 Gallons (9999 Litres)
Maximum Cumulative Total	9,999,999.9 Gallons (99,999,999 Litres)

QM40-RD DISPENSER

Performance	Duty Cycle: Continuous
Input	115 volt AC, 60 Hz / 230 volt AC, 60 Hz
Inlet/Outlet	1-inch NPT pipe nipple
Conduit	1/2 inch rigid NPT
Switch	12A 250 volts AC / 17A 125 volts AC 1HP 250 volts AC
Solenoid	10 Watts / 120 volts AC, 60 Hz 110 volts AC, 50/60 Hz
Security	Nozzle can be padlocked
Shipping Weight	55.8 lbs. (25.3 kg)
Certifications	cULus Listed

¹Results may vary due to application variations.

²Unleaded Fuel Kit required (see Maintenance)

SPECIFICATIONS (CONTINUED)

QM40-RD

Dimensions Inches (cm)

A. Overall Assy Width	21.36 (54.26)
B. Cabinet Width	15.70 (39.88)
C. Cabinet Height	12.54 (31.85)
D. Overall Assy Depth	13.42 (34.10)
E. Cabinet Depth	11.22 (28.51)

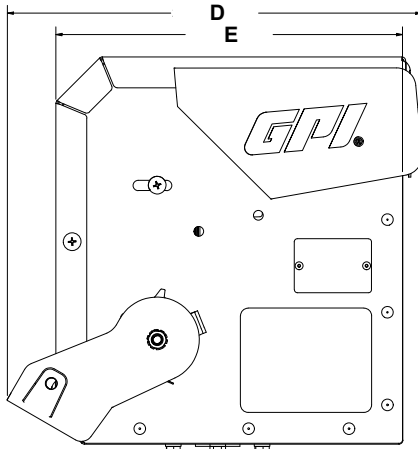
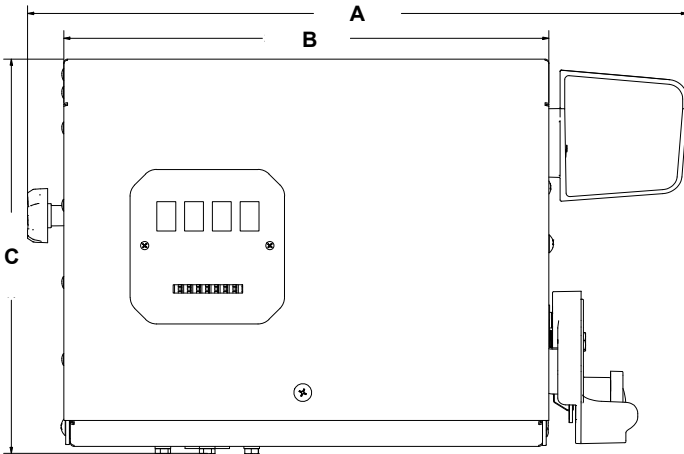


Figure 1

INSTALLATION INSTRUCTIONS

⚠ WARNING

Coverplates protect the operator from moving parts. Never operate the pump without coverplates in place. Never apply electric power to the pump without coverplates in place. Always disconnect power before repairing or servicing.

⚠ CAUTION

An upstream, in-line mesh strainer must always be installed when operating this meter; otherwise, particles may enter the meter chamber and disrupt the smooth operation of the oval gears.

Mechanical Connections

NOTE: All threaded fuel connections must be sealed with thread tape or a pipe thread sealing compound approved for use with petroleum fuels, and tightened securely to prevent leakage.

NOTE: This dispenser must be installed to conform to all federal, state, and local codes including the National Electrical Code (NFPA 70), Flammable and Combustible Liquids Code (NFPA 30) and Code for Motor Fuel Dispensing Facilities and Repair Garages (NFPA 30A) as they apply for non-commercial application on fixed, above-ground storage tanks with a maximum capacity not to exceed 6,000 gallons (22,700 litres) or Canadian Electric Code C22.1 as applicable. The tank must not be accessible to the public. This dispenser may also be mounted on underground tanks.

NOTE: When used with an above-ground storage tank, a UL Listed emergency shut-off (shear) valve with a fusible link must be installed below the dispenser (see Figure 2).

NOTE: This dispenser is designed to mount directly onto a support bracket (not included) attached to an above-ground storage tank, or mounted onto an island pedestal.

1. Ensure pump (not included) is mounted securely onto top of tank and oriented for most direct pipe routing to dispenser.
2. Ensure that mounting bracket (not included) for dispenser is firmly attached at the desired dispenser height and located to allow for the most direct pipe routing from pump to dispenser.
3. Install dispenser onto mounting bracket.
4. Install Y-Strainer (provided) to dispenser inlet.
5. Install emergency shut-off valve (not supplied) to dispenser inlet. Valve should be positioned to mount rigidly to tank and not rely on dispenser for support.
6. Install piping, valves and other required components between pump and emergency shut-off valve (see Figure 2). The piping is not intended to support the dispenser or pump in any manner.

INSTALLATION INSTRUCTIONS (CONTINUED)

Hose Nozzle Valves and Hoses

All accessories must be UL listed. Approved accessories for use with this remote dispensing system are:

- UL listed interchangeable service station type hose nozzle valve. Use of other off-the-shelf nozzles may result in malfunction and reduced system performance
- Any UL Listed hose assembly

NOTE: DO NOT use check valves.

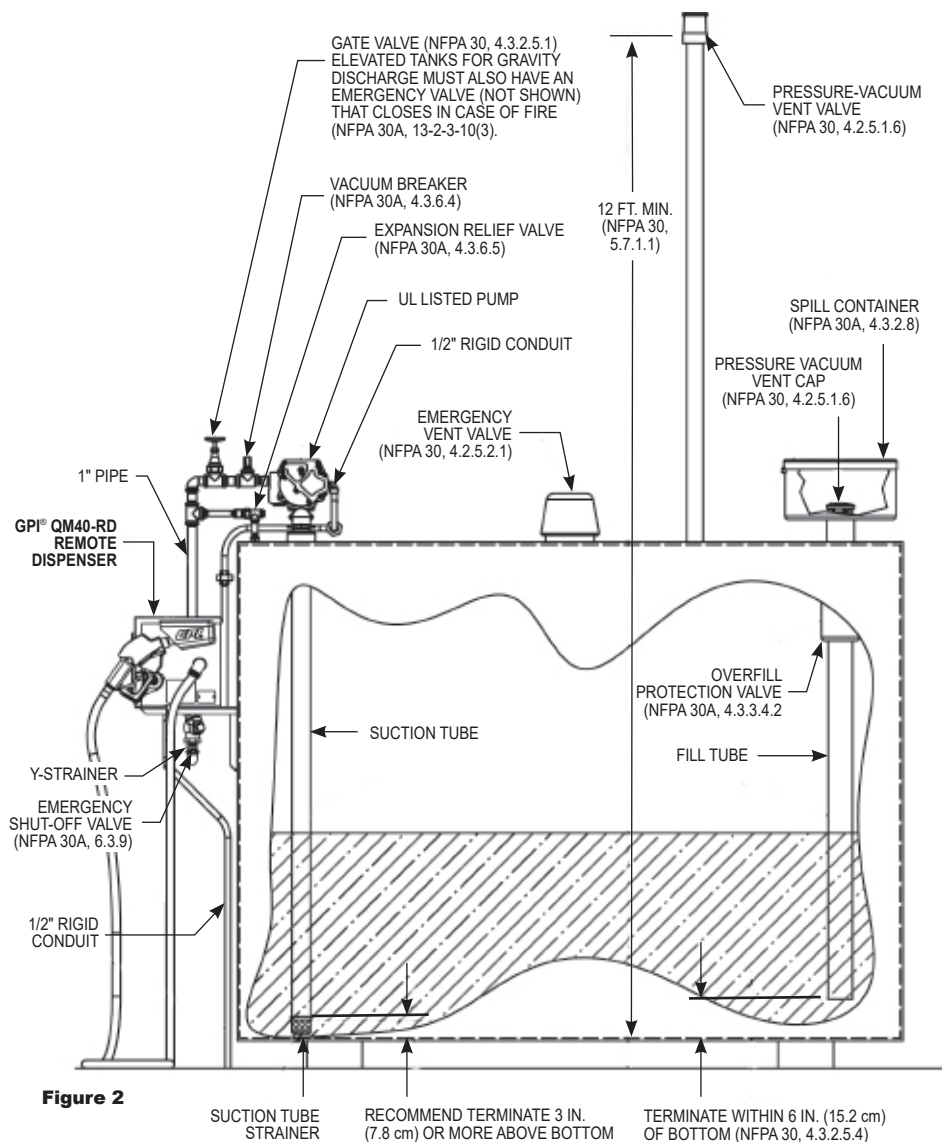


Figure 2

SUCTION TUBE
STRAINER

RECOMMEND TERMINATE 3 IN.
(7.8 cm) OR MORE ABOVE BOTTOM

TERMINATE WITHIN 6 IN. (15.2 cm)
OF BOTTOM (NFPA 30, 4.3.2.5.4)

INSTALLATION INSTRUCTIONS (CONTINUED)

Install Dispenser and Accessories

The remote dispenser is available as a dispenser only (customer provides an approved hose nozzle valve and hose assembly). A 1 inch NPT 90 degree elbow, 1 inch to 3/4 inch NPT reducer fitting, and a nozzle cover (with attaching hardware that will need to be installed onto the dispenser) are included.

Attach the 90 degree elbow to the outlet pipe on the back of the dispenser. This will accommodate a 1 inch NPT hose assembly. When installing a 3/4 inch NPT hose assembly, install the reducer bushing into the 90 degree elbow. Install hose assembly and hose nozzle valve. All threaded fuel pipe connections must be made with a gasoline-resistant pipe joint sealing compound.

For UL Listed interchangeable nozzles, attach nozzle cover using mounting hole positions (see Figure 3 and Figure 4), or label on side of cabinet.

1. Remove fasteners and lift top panel off of cabinet.
2. Attach nozzle cover to side of top panel at the hole locations shown.
3. Install top panel and fasteners.

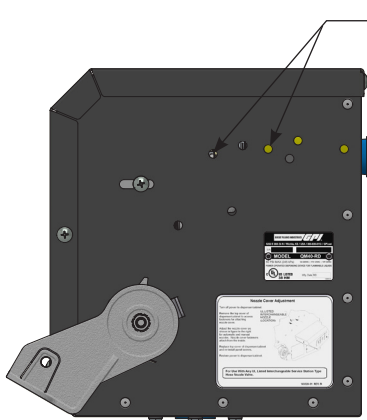


Figure 3

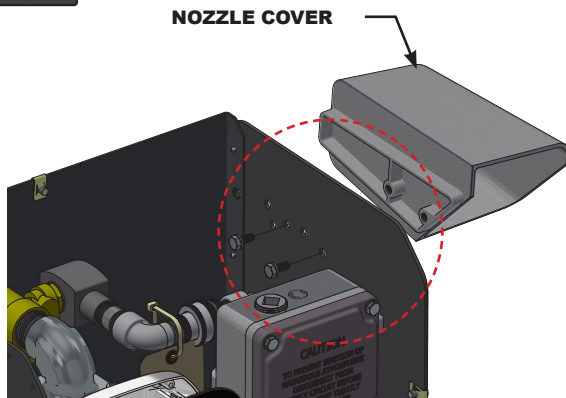


Figure 4

INSTALLATION INSTRUCTIONS (CONTINUED)

Electrical Connections

⚠ DANGER *The Remote Dispenser must be installed by a licensed electrician and conform to National Electrical Code (NFPA 70), Flammable and Combustible Liquids Code (NFPA 30) and Code for Motor Fuel Dispensing Facilities and Repair Garages (NFPA 30A) or Canadian Electric Code C22.1 as applicable. You, as the owner, are responsible for seeing that the installation and operation of your dispenser complies with NFPA codes as well as any applicable state and local codes. Rigid conduit must be used to install wiring.*

To reduce the risk of ignition of hazardous atmospheres, conduit runs must have a sealing fitting connected within 18 inches of the enclosure.

⚠ DANGER *Failure to follow these wiring instructions may result in death or serious injury from shock, fire or explosion.*

⚠ DANGER *The dispenser must be properly grounded to avoid personal injury. Operating an ungrounded or improperly grounded dispenser may result in death due to electrical shock, fire or explosion.*

Electrical wiring and connections must be made only by a licensed electrician in accordance with national, state and local electrical codes regarding Class 1, Division 1, Group D locations. Other codes may apply.

Refer to wiring diagrams for dispenser. The junction box inside the dispenser has 1/2 inch NPT threaded hubs for conduit connections. All electrical connections shall be made with threaded rigid conduit, sealing fittings and conductor seals.

Outside the United States, installation should be performed in compliance with local codes.

Wiring Details

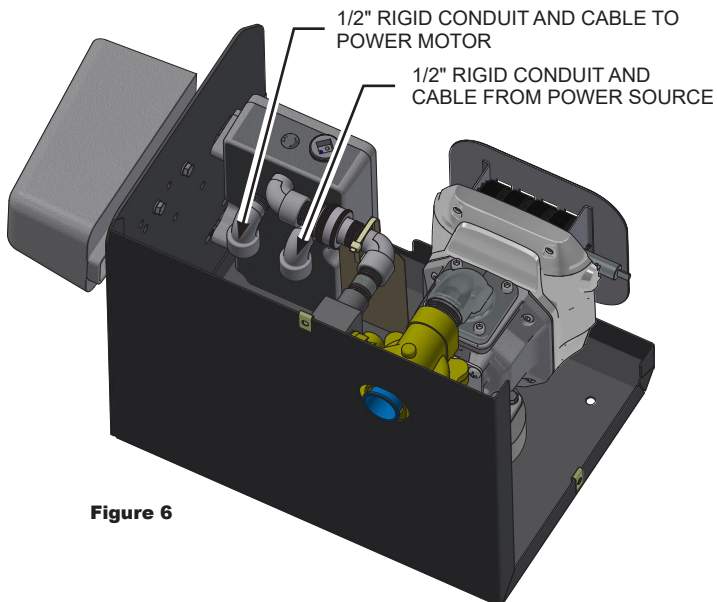
1. To access the junction box inside the dispenser, remove top cover then remove the front panel. Remove the junction box cover (see Figure 5).

⚠ CAUTION *Avoid damaging the machined mating surfaces of the junction box and its coverplate, as this precision seal is necessary to ensure the junction box retains its explosion proof integrity.*

2. Install 1/2 inch rigid conduit and electrical cable from pump motor junction box to the 90 degree fitting on left side of junction box (see Figure 6). Install 1/2 inch rigid conduit and electrical cable from power source to opening in bottom of junction box (see Figure 6). Use only code specified electrical cable with ground wire.
3. With power turned off, use wire nuts to connect pump wires, solenoid wires and power wires to switch leads per appropriate wiring diagram (115-volts AC or 230-volts AC Pump). The switch leads enter the junction box through the right side opening and the solenoid wires through the back opening. The top opening is plugged.
4. Optional Pulser can be installed on internal junction box. Refer to instructions provided with the GPI Pulser Kit.

INSTALLATION INSTRUCTIONS (CONTINUED)

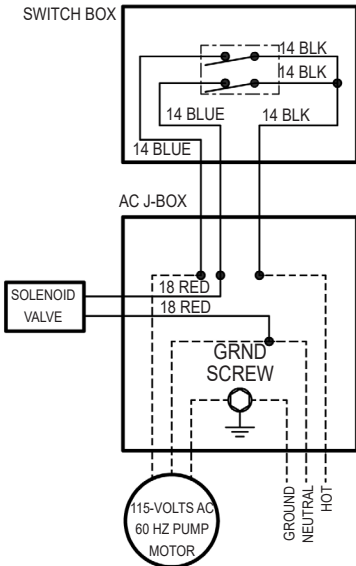
5. Attach ground wires to ground screws in junction boxes (pump and dispenser) and to ground source.
6. Position wires inside the junction box and replace the coverplate. Reinstall the front panel and top cover.



INSTALLATION INSTRUCTIONS (CONTINUED)

115-Volts AC

230-Volts AC



SWITCH SPECIFICATIONS
 DPST
 12A 250-VOLTS AC
 17A 125-VOLTS AC
 1HP 250-VOLTS AC

SOLENOID SPECIFICATIONS
 10 WATTS
 120-VOLTS AC / 60 HZ
 110-VOLTS AC / 50 HZ

Dashed Lines Indicate Field Wiring

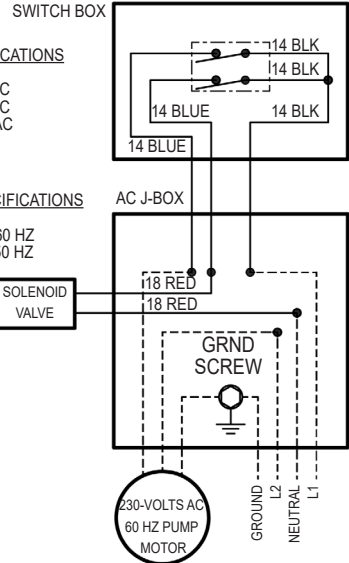


Figure 7

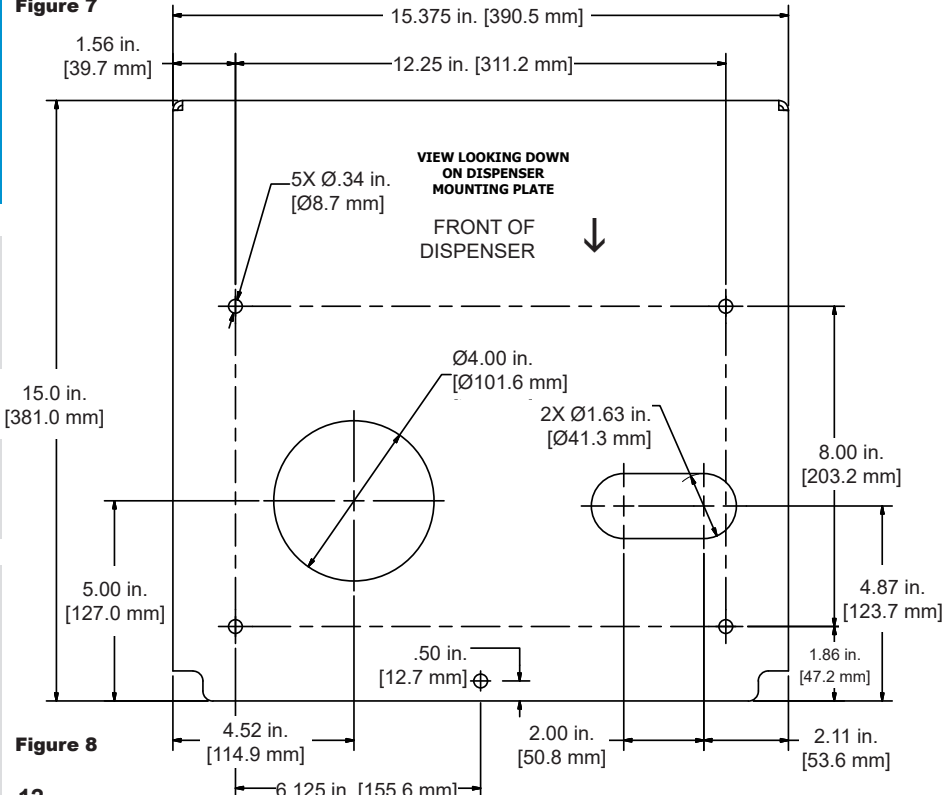


Figure 8

OPERATION

⚠ DANGER To prevent physical injury, observe precautions against fire or explosion when dispensing fuel. Do not operate the dispenser in the presence of any source of ignition including running or hot engines, lighted cigarettes, or gas or electric heaters.

Observe precautions against electrical shock when operating the dispenser. Serious or fatal shock can result from operation of electrical equipment in damp or wet locations.

⚠ CAUTION Avoid prolonged skin contact with petroleum fuels. Use protective goggles, gloves, and aprons in case of splashing or spills. Change saturated clothing and wash skin promptly with soap and water.

⚠ CAUTION An upstream, in-line mesh strainer must always be installed when operating this meter; otherwise, particles may enter the meter chamber and disrupt the smooth operation of the oval gears.

After hose, nozzle, filter, and other accessories, have been installed, the system should be purged of air. Hold the nozzle open into the tank opening or container and turn on the system by lifting the switch lever to the "ON" position (see Figure 10). Allow the pump to prime and discharge any air from the system.

Fuel Meter

The large meter display represents the Batch Total for each fuel delivery. Before dispensing, reset the Batch Total to zero by turning the reset knob (see Figure 9).

The small display represents the Cumulative Total of all fuel deliveries and cannot be reset (see Figure 9).

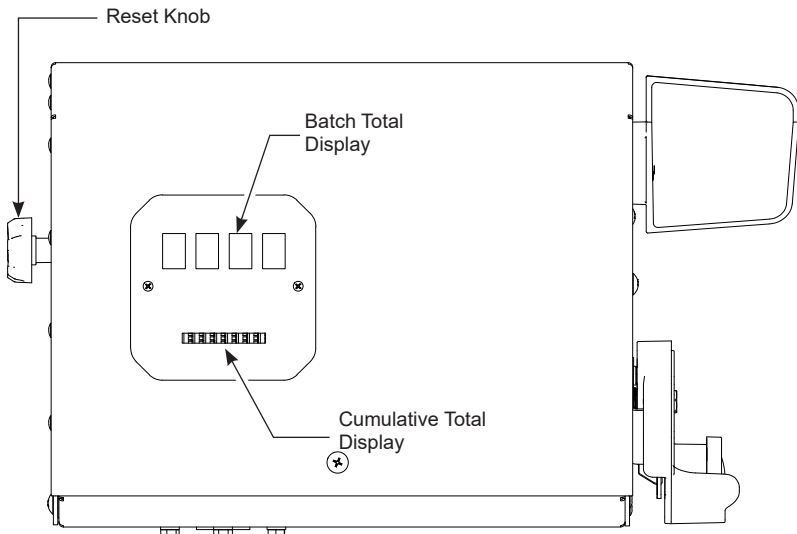
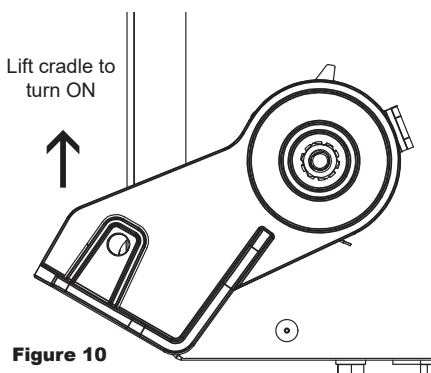


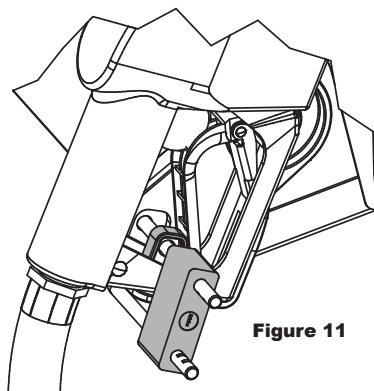
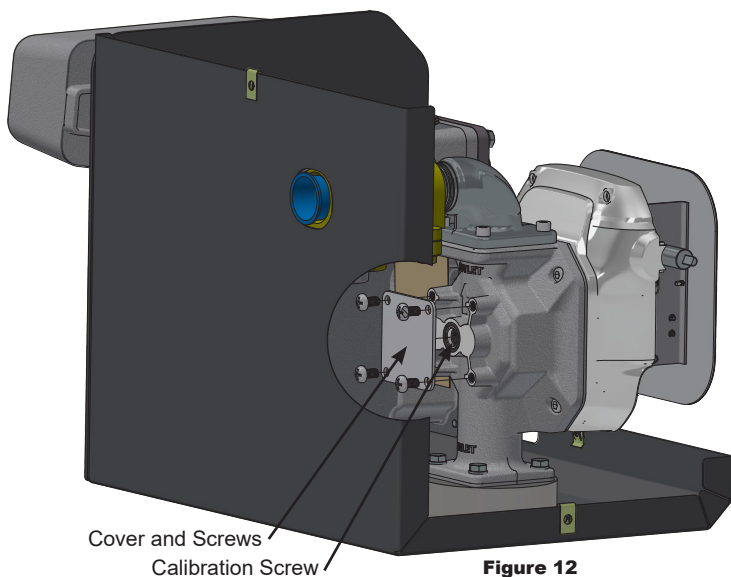
Figure 9

OPERATION (CONTINUED)**To Dispense Fuel**

1. Remove the nozzle from the nozzle hanger. Turn the pump on by lifting upward on the switch lever (see Figure 10).
2. Insert the nozzle into the receiving tank and squeeze the handle to dispense fuel.
3. After dispensing fuel, push the switch lever down to turn the pump off and return nozzle to the holder. The pump motor cannot be operated with nozzle in position on the holder. Use the holes provided to lock nozzle in place to prevent unauthorized use (see Figure 11).

**Figure 10**

Cradle shown in OFF position

**Figure 11****Figure 12**Cover and Screws
Calibration Screw

OPERATION (CONTINUED)

⚠ WARNING *Coverplates protect the operator from moving parts. Never operate the remote dispenser without coverplates in place. Never apply electric power to the remote dispenser without coverplates in place. Always disconnect power before repairing or servicing.*

⚠ CAUTION *An upstream, in-line mesh strainer must always be installed when operating this meter; otherwise, particles may enter the meter chamber and disrupt the smooth operation of the oval gears.*

Meter Calibration

The meter is accurately calibrated at the factory for use with diesel fuel. Due to differences in viscosity and flow rates, the meter may require recalibration to measure other fuels or to adjust for inaccuracies.

Purge air from the meter and fuel system by dispensing fuel into a container until a full flow occurs. Close the nozzle.

Reset the meter batch counter to zero by twisting the knob on the side of the unit (see Figure 9).

Pump into a graduated calibration container to a specified quantity. For the greatest accuracy, be sure the container is placed on a level surface and a consistent flow rate is used. When topping off the calibration container, use a quick-open and quick-close method until the mark is reached.

Compare the meter display to the quantity in the container. If the display does not register the quantity on the container, adjust the meter by performing the following:

- a. Remove cabinet top cover. Gain access to the recessed calibration screw by removing the 4 screws and calibration screw cover on back of meter (see Figure 12).
- b. Using the 5 mm hex L-wrench (provided) with the meter, adjust the calibration screw as required.

NOTE: The calibration screw setting may have been adjusted at the factory. The gasoline setting is approximately fully closed (turn clockwise). Do not overtighten the screw against the seat.

- c. If the meter registered less than the quantity in the container, turn the calibration screw clockwise. If the meter display reads more than the amount in the container, turn the calibration screw counterclockwise.

Empty the calibration container and repeat steps 2 to 4 until the meter registers the quantity in the container.

Reinstall the plate, (4) screws and the O-ring seal if removed. Tighten (4) screws to 42-46 lb-in (4.75-5.20 Nm) torque. Replace cabinet top.

OPERATION - METER (CONTINUED)

Optional Calibration - Unleaded Fuel Gear Kit

NOTE: The meter can be field calibrated for use with unleaded fuel (see Meter Calibration), however, a replacement gear is included to increase accuracy when using unleaded fuel.

NOTE: The replacement gear is white for easy identification. Retain the black gear to change the meter back to a diesel calibration if needed (see Figure 13).

1. Remove the 4 top cover screws and top cover, along with the faceplate.
2. Using a Phillips screwdriver, remove the 2 counter register screws and counter register (see Figure 13).
3. Using a small flat screwdriver, pry off the retaining ring.
4. Remove the black gear and replace with the white gear.
5. Press replace the retaining ring. Leave a small amount of space between ring and gear.
6. Replace counter register and screws.
7. Replace top cover and screws, along with the faceplate.

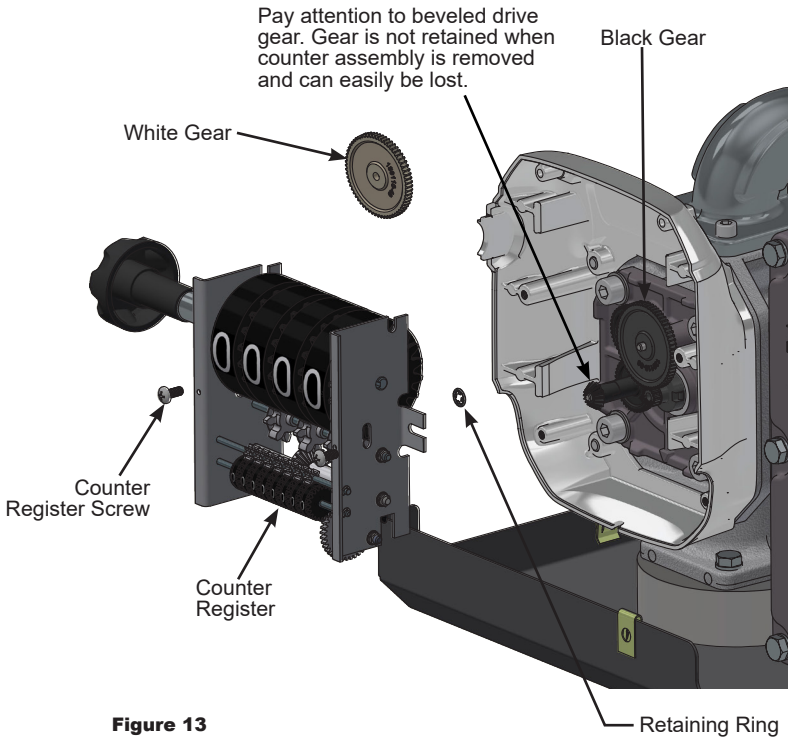


Figure 13

OPERATION - METER (CONTINUED)

Calibration Curves

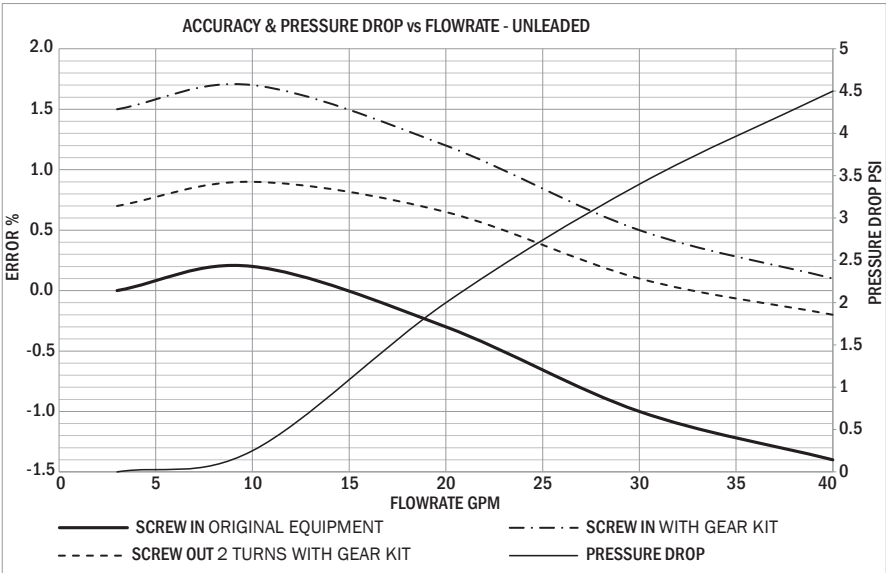
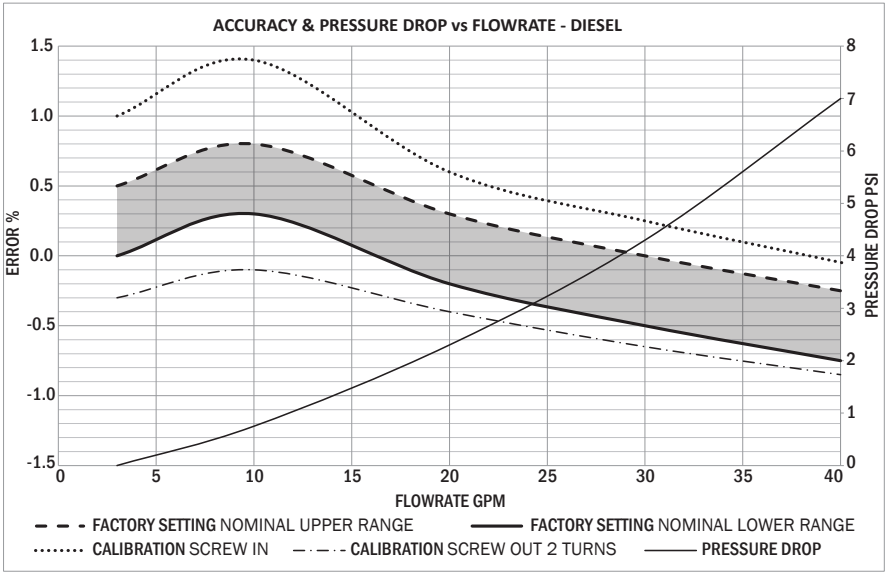


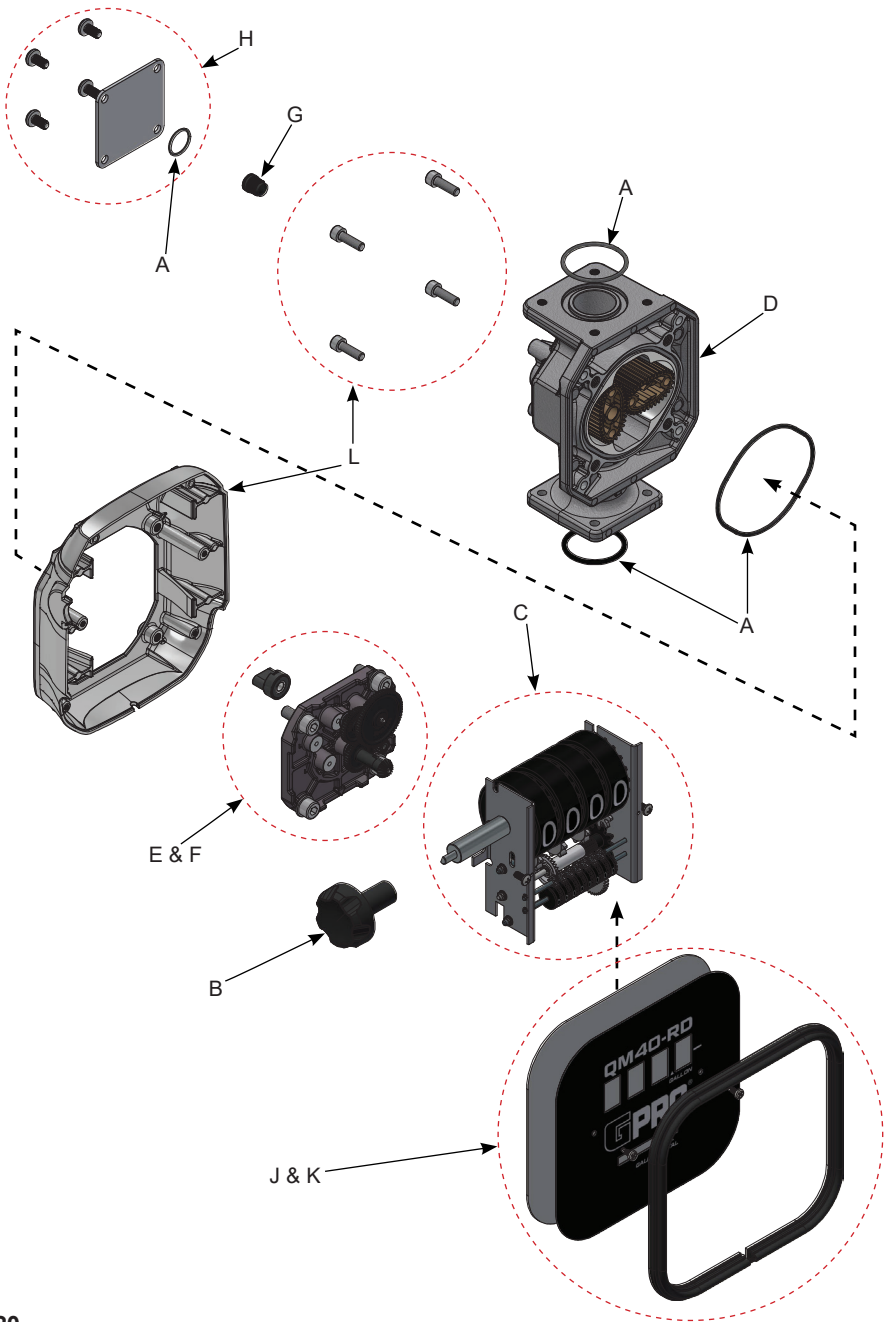
Figure 14

TROUBLESHOOTING

SYMPTOM	POSSIBLE CAUSE(S)	CORRECTIVE ACTION
Meter counter doesn't operate (normal fuel delivery)	1. Foreign material in counter assembly	1. Remove and clean counter assembly
	2. Missing or worn bevel gear	2. Replace bevel gear (Fig 13)
	3. Counter misalignment	3. Look for loose or missing fasteners, bent or misaligned parts
	4. Broken counter assembly	4. Replace counter assembly
Meter counter doesn't operate (little or no fuel flow)	1. Clogged fuel strainer	1. Clean or replace strainer
	2. Jammed rotors from foreign material in rotor assembly	2. Remove and clean rotor assembly
	3. Other system components malfunctioning	3. Check all system components (from tank to nozzle) for clogs and/or malfunctions. Clean or replace as necessary
Fuel leakage	1. Leakage at threads	1. Remove meter and reseal all threaded connections using thread tape, or pipe thread sealing compound approved for use with flammable liquids
	2. Leakage at fittings	2. Remove fittings and inspect for damaged, missing or incorrectly seated seals. Replace as required
	3. Leakage between coverplate and housing	3. Remove coverplate and inspect for damaged, missing or incorrectly seated seal. Replace as required
	4. Leakage at counter drive shaft	4. Remove meter and reseal all threaded connections with thread tape or pipe thread sealing compound approved for use with flammable liquids
Dispenser does not operate (pump is running and delivering fuel to inlet)	1. Switch defective	1. Remove coverplate from switchbox and inspect switch. Replace if necessary
	2. Electrical connections faulty	2. Check for defective wiring and/or connections or improper electrical connections. Replace as needed
	3. Solenoid valve defective	3. If power is being supplied to solenoid valve but it does not open, replace solenoid valve

REPAIR PARTS ILLUSTRATION FOR QM40-RD - METER

⚠ CAUTION Do not return the meter or parts without prior approval from the GPI Customer Service Department. Due to strict government regulations, GPI cannot accept parts unless they have been drained and cleaned.



REPAIR PARTS LIST FOR QM40-RD - METER

Ref. No.	Description	Part Number
A	SEAL KIT: Includes (1) housing O-ring, (2) fitting O-rings, (1) back plate O-ring	139500-01
B	KNOB ASSEMBLY KIT, Includes (1) knob assembly	139500-04
C	COUNTER ASSEMBLY KIT: Includes (1) counter assembly, attaching hardware	139500-05
D	ROTOR KIT: Includes (1) rotor set	139500-06
E	COVERPLATE ASSEMBLY KIT, GAL: Includes (1) assembled coverplate (gears, mag drives), housing seal, attaching hardware	139500-07
F	COVERPLATE ASSEMBLY KIT, LITRE: Includes (1) assembled coverplate (gears, mag drives), housing seal, attaching hardware	139500-08
G	CALIBRATION SCREW KIT: Includes (1) calibration screw, (1) O-ring	139500-09
H	BACK PLATE KIT: Includes (1) back plate, (1) O-ring, attaching hardware	139500-10
J	FACEPLATE KIT, GAL: Includes (1) faceplate, (1) faceplate decal, attaching hardware, (1) faceplate seal	143500-20
K	FACEPLATE KIT, LIT: Includes (1) faceplate, (1) faceplate decal, attaching hardware, (1) faceplate seal	143500-21
L	MIDDLE COVER KIT: Includes (1) middle cover, attaching hardware	139500-13

(▲) Available as part of kit only.

PARTS & SERVICE

For warranty consideration, parts, or other service information, please contact your local distributor. If you need further assistance, contact the GPI Customer Service Department in Wichita, Kansas, during normal business hours.

A toll free number is provided for your convenience.

1-800-835-0113

To obtain prompt, efficient service, always be prepared with the following information:

- The model number of your product
- The serial number or manufacturing date code of your product.
- Part descriptions and numbers.

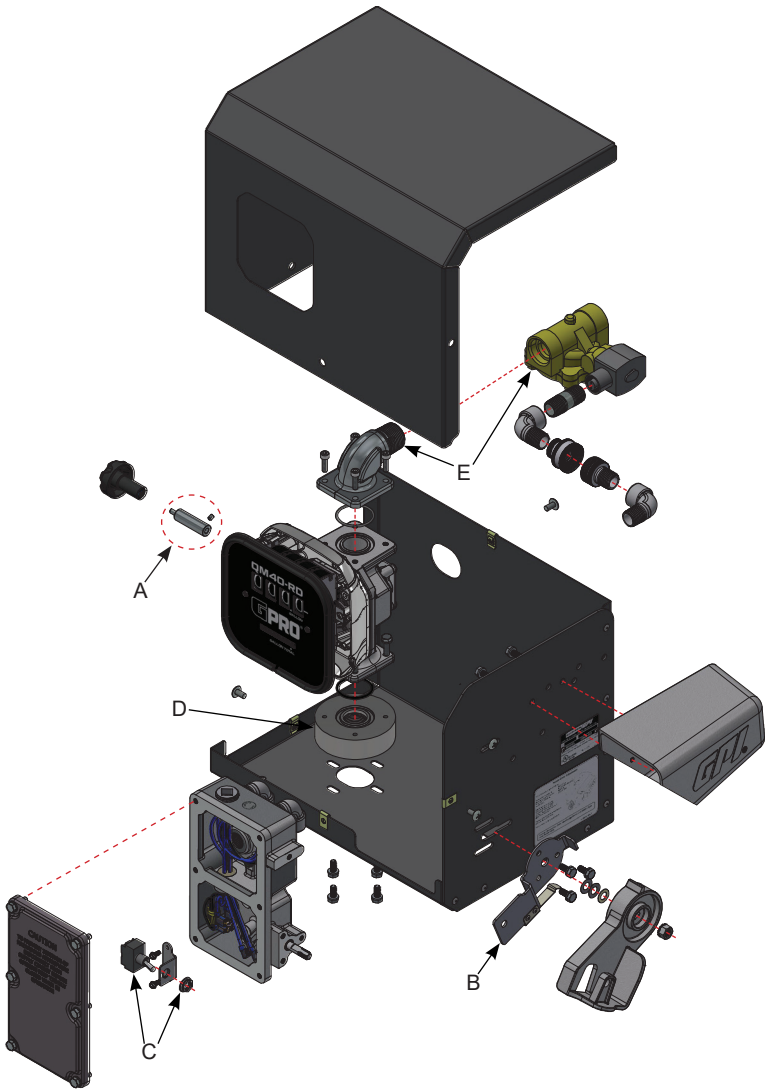
For warranty work, always be prepared with your original sales slip or other evidence of purchase date.

IMPORTANT: Please contact GPI before returning any parts. It may be possible to diagnose the trouble and identify needed parts in a telephone call. GPI can also inform you of any special requirements you will need to follow for shipping fuel dispensing equipment.

REPAIR PARTS ILLUSTRATION FOR QM40-RD - DISPENSER

CAUTION

Do not return the meter or parts without prior approval from the GPI Customer Service Department. Due to strict government regulations, GPI cannot accept parts unless they have been drained and cleaned.



GETTING STARTED

SAFETY / SPECIFICATIONS

ASSEMBLY / INSTALLATION

OPERATION

MAINTENANCE

REPAIR PARTS LIST FOR QM240-RD / QM150-RD - DISPENSER

Ref. No.	Description	Part Number
A	Reset Shaft Kit - Includes Shaft and Screw	143500-17
B	Locking Bracket Kit	143500-09
C	Switch Kit	143500-10
D	Inlet Kit - Includes inlet fitting, O-ring, and screws	143500-18
E	Outlet Kit - Includes outlet fitting, O-ring, solenoid, and screws	143500-19

PARTS & SERVICE

For warranty consideration, parts, or other service information, please contact your local distributor. If you need further assistance, contact the GPI Customer Service Department in Wichita, Kansas, during normal business hours.

A toll free number is provided for your convenience.

1-800-835-0113

To obtain prompt, efficient service, always be prepared with the following information:

- The model number of your product
- The serial number or manufacturing date code of your product.
- Part descriptions and numbers.

For warranty work, always be prepared with your original sales slip or other evidence of purchase date.

IMPORTANT: Please contact GPI before returning any parts. It may be possible to diagnose the trouble and identify needed parts in a telephone call. GPI can also inform you of any special requirements you will need to follow for shipping fuel dispensing equipment.



Limited Warranty Policy

Great Plains Industries, Inc. (GPI) hereby provides a limited warranty against defects in material and workmanship on all products manufactured by GPI. The warranty period shall begin on the date of purchase confirmed with the original purchase receipt or, if not available, the date of manufacture. Manufacturer's sole obligation under the following warranties will be limited to either, at Manufacturer's option, replacing or repairing defective goods. If the product is no longer available, replacement may be made with a similar product of equal or greater value. Buyer's exclusive remedy for breach of any such warranties will be enforcement of such obligations of Manufacturer. The warranty shall extend to the purchaser of this product and to any person to whom such product is transferred during the warranty period.

Warranty shall not apply if:

The product has been subjected to neglect, misuse, abuse or damage or has been installed or operated other than in accordance with the manufacturer's operating instructions or the product has been altered or modified outside the warrantor's duly appointed representative.

Product components considered wear items, i.e. vanes, etc., are NOT included within the scope of this warranty.

Charges for shipping and insuring packages to GPI are the customer's responsibility. GPI will ship the warranted product back to the customer via ground shipping free of charge for shipments within the United States. International shipping charges and customs fees to and from GPI are the customer's responsibility.

GREAT PLAINS INDUSTRIES, INC., EXCLUDES LIABILITY UNDER THIS WARRANTY FOR DIRECT, INDIRECT, INCIDENTAL AND CONSEQUENTIAL DAMAGES INCURRED IN THE USE OR LOSS OF USE OF THE PRODUCT WARRANTED HEREUNDER.

THE COMPANY HEREWITH EXPRESSLY DISCLAIMS ANY WARRANTY OF MERCHANTABILITY OR FITNESS FOR ANY PARTICULAR PURPOSE OTHER THAN FOR WHICH IT WAS DESIGNED.

THIS WARRANTY GIVES YOU SPECIFIC RIGHTS AND YOU MAY ALSO HAVE OTHER RIGHTS WHICH VARY FROM U.S. STATE TO U.S. STATE.

In compliance with MAGNUSON MOSS CONSUMER WARRANTY ACT - PART 702 (governs the resale availability of the warranty terms)

To obtain warranty service contact the GPI Product Support Department:

316-686-7361 or 800-835-0113

GPI will guide you through a product troubleshooting process to determine the appropriate corrective actions.

The following respective warranty periods apply:



FIVE-YEAR WARRANTY applies to the following product families:

GPRO® Fluid Transfer Pumps: PRO20-115, PRO20-230, V25-012, V25-024, PR035-115

GPRO® Remote Dispensers: QM240-RD, QM150-RD

GPRO® Fuel Meters: QM40

GPI® Fuel Meters: M30



TWO-YEAR WARRANTY applies to the following product families:

GPI® Fluid Transfer Pumps: G8P, EZ8, M-150S, M-180S, M-240S, G20-012*, M-1115S, P-200, PA-200, P-120H, P-200H, PA-120H, PA-200H, HP-100, HP-90, DP-20, RP-10

GPI® Fluid Meters: 01A, 01N, 03A, 03N, FM-300H, LM51DN, LM-300



ONE-YEAR WARRANTY applies to the following products:

GPI® Oil Transfer Pumps: L 5016, L 5116, L 5132



90-DAY WARRANTY applies to the following products:

GPI® Fluid Transfer Hand Pumps: RP-5, BP-12, CP-5, LP-50

90-DAY WARRANTY applies to Spare Parts, Kits and Accessories including Nozzles*, Hoses, Swivels, Vent Caps, Filter Adapters, etc.

90-DAY WARRANTY applies to Factory Repairs from repair date or the balance of the original warranty whichever is longer.

**Extended warranty coverage available on select products. Requires registration of product with manufacturer. Visit gpi.net/product-registration/*



COMPANY HEADQUARTERS:
5252 East 36th Street North
Wichita, KS, USA 67220-3205

LEARN MORE: GPIpumps.com

Revision Date: June 29, 2021
CORP-1083 Rev B_Limited Warranty Policy