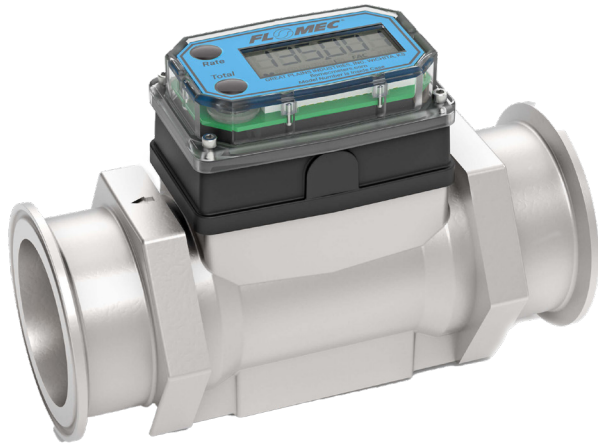


G2 SERIES HIGH-TEMP BREW METER



The FLOMEC® G2 Brew Meter features a high-temperature riser and Tri-clamp fittings. It is suitable for use with strike water, hot water flow, and brewing liquids.

FEATURES / BENEFITS

Features highly visible Q9, battery-powered, LCD display; 2-year battery life

- High accuracy meter
- Modular design allows for use with output modules, sensors, and remote display kits; plug and play
- Internal parts are simple to replace for easy maintenance
- 11 pre-programmed engineering units plus 1 custom option: gallon, litre, imperial gallon, quart, ounce, acre-foot, millilitre, cubic foot, cubic centimetre, cubic metre, barrel
- Tri-clamp, high temperature, sanitary fittings:
 - ¾ inch fitting for ½ inch meter
 - 1 inch fitting for ¾ inch meter
 - 1½ inch fitting for 1 inch meter
 - 2 inch fitting for 1½ inch meter
 - 2½ inch fitting for 2 inch meter
- For applications requiring 3A Food & Beverage certifications, see the FLOMEC 3A turbine meter (GSCPS model).

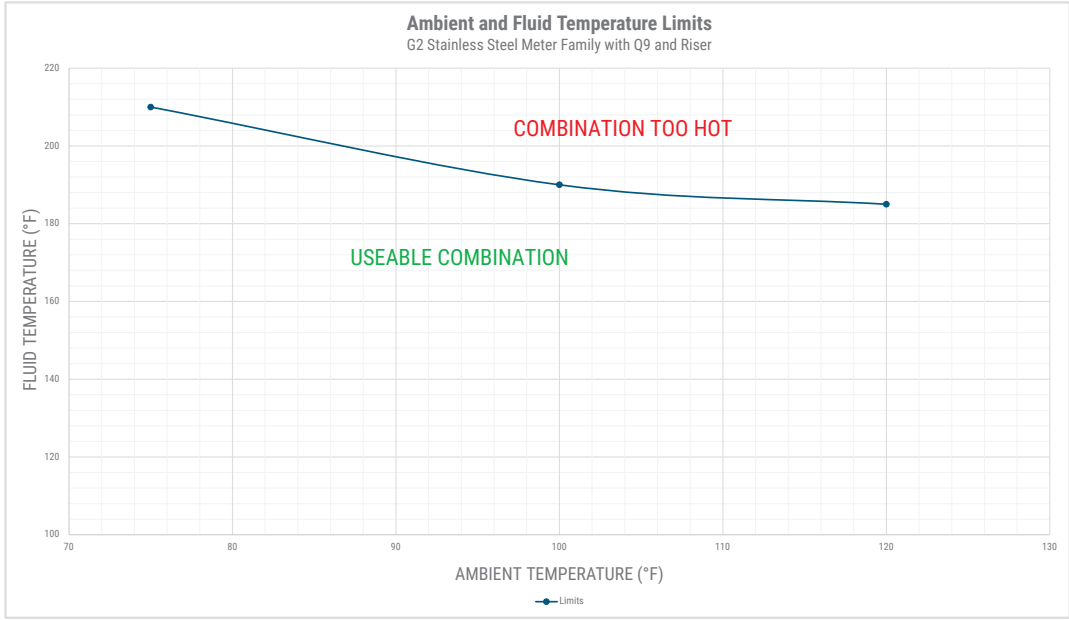
SPECIFICATIONS

Fitting Type:	Tri-Clamp (Stainless Steel only) - Fitting size is one size bigger than meter size					
Type:	Turbine					
Tri-Clamp Fitting:	3/4"	1"	1½"	2"	2½"	
Corresponding Pipe Size:	1/2"	3/4"	1"	1½"	2"	
Housing Material:	316 Stainless Steel					
Flow Range:	1/2" (05)	1 - 10 GPM			(3.8 - 38 L/min)	
	3/4" (07)	2 - 20 GPM			(7.6 - 76 L/min)	
	1" (10)	5 - 50 GPM			(19 - 190 L/min)	
	1½" (15)	10 - 100 GPM			(38 - 380 L/min)	
	2" (20)	20 - 200 GPM			(76 - 760 L/min)	
Accuracy (% of Reading):	1/2" (05)			± 1.5%		
	3/4" (07)			± 1.0%		
	1" (10)			± 1.0%		
	1½" (15)			± 0.75%		
	2" (20)			± 0.75%		
Repeatability:	± 0.1%					
Pressure Rating:						
Sanitary Flange 316 SS	Limited by fitting, clamp size, & temperature					
Operating Temperature Range:	0°F to 210°F (-18°C to 99°C)*					
Typical K-Factor:	1/2" (05)	2,500 PPG (660 Pulses/L)				
	3/4" (07)	1,100 PPG (291 Pulses/L)				
	1" (10)	565 PPG (149 Pulses/L)				
	1½" (15)	215 PPG (57 Pulses/L)				
	2" (20)	100 PPG (26 Pulses/L)				
Wetted Materials:	Housing:	316 Stainless Steel or Aluminum				
	Bearings:	96% Alumina Oxide Ceramic				
	Shaft:	Tungsten Carbide				
	Rotor:	PVDF				
	Rings:	316 Stainless Steel				
Frequency Range:	1/2" (05)	42-420 Hz @ 1-10 GPM (3.8-38 L/min) / 45-450 Hz @ 1.2-12 GPM (4.5-45 L/min) (PVDF)				
	3/4" (07)	37-370 Hz @ 2-20 GPM (7.6-76 L/min)				
	1" (10)	47-470 Hz @ 5-50 GPM (19-190 L/min) / 45-475 Hz @ 5-50 GPM (19-190 L/min) (PVDF)				
	1½" (15)	36-360 Hz @ 10-100 GPM (38-380 L/min)				
	2" (20)	33-330 Hz @ 20-200 GPM (76-760 L/min)				
Calibration Report:	Comes standard with G2 Series meters.					
	N.I.S.T. – Certification available.					

*See Ambient and Fluid Temperature Limits graph on the operating temperature range. Shown on next page.

G2 SERIES

HIGH-TEMP BREW METER



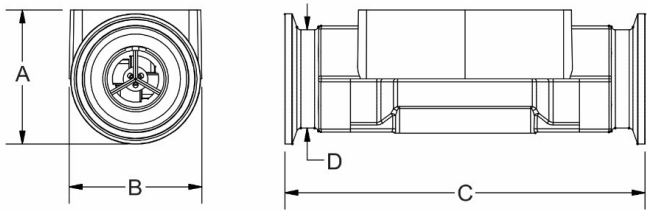
DIMENSIONS

	1/2 in. (05)	3/4 in. (07)	1 in. (10)	1½ in. (15)	2 in. (20)
A = Height	1.4 in. (3.6 cm)	2.0 in. (5.1 cm)	2.0 in. (5.1 cm)	2.6 in. (6.6 cm)	3.1 in. (7.9 cm)
B = Width	2.0 in. (5.1 cm)	2.0 in. (5.1 cm)	2.0 in. (5.1 cm)	2.7 in. (6.9 cm)	3.4 in. (8.6 cm)
C = Length	5.0 in. (12.71 cm)	5.0 in. (12.71 cm)	5.5 in. (13.97 cm)	6.5 in. (16.51 cm)	7.0 in. (17.78 cm)
D = Outside Dia.	.75 in. (1.9 cm)	1.0 in. (2.54 cm)	1.5 in. (3.81 cm)	2.0 in. (5.08 cm)	2.5 in. (6.35 cm)
Fitting/ Clamp Size	3/4 in.	1 in.	1½ in.	2 in.	2½ in.

Computer electronics add 0.7 in. (1.8 cm) to height of turbine.

NOTE: For representation purpose only. Actual product models vary in shape, design, etc

Sanitary Flange dimensions not shown. For those dimensions, please refer to product manuals or our website GreatPlainsIndustries.com.



APPROVALS

CE NEMA 4 IP65

If you have questions, please reach out to our product support team.