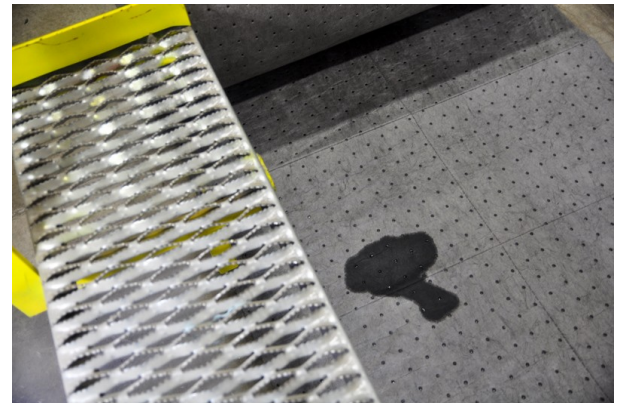


## Essentials 30"x150' Universal Single-Ply Heavyweight Sorbent Roll

### Features:

- All-purpose sorbent
- Heavyweight product provides additional absorbency and strength
- Perforated for flexibility and efficiency
- Great wicking and performance for all of your leaks, drips and spills.
- Dimple bond pattern increases strength and durability



### Specifications:

<b>Brand</b>	Essentials
<b>Product Category</b>	Sorbent Pads and Rolls
<b>Product Type</b>	Rolls
<b>Liquids Absorbed</b>	Universal
<b>Grade/Weight</b>	Heavyweight
<b>Color/Colour</b>	Gray
<b>Package Count</b>	1
<b>Product Width (in)</b>	30
<b>Product Length (ft)</b>	150
<b>Construction</b>	Single-Ply Meltblown Polypropylene
<b>Bonded</b>	Yes
<b>Perforations</b>	Yes
<b>Absorbency (Gal)</b>	36
<b>Packaging Type</b>	Bag
<b>UPC</b>	810042420083

### Logistics:

<b>Shipping Height (in)</b>	30
<b>Shipping Length (in)</b>	16
<b>Shipping Width (in)</b>	16
<b>Cube</b>	4.444444444444444
<b>Shipping Weight (lb)</b>	20
<b>Layers Per Pallet</b>	3
<b>Cases Per Layer</b>	8
<b>Pallet Count</b>	24
<b>Pallet Dimensions (in/ft)</b>	44x48x95
<b>NMFC</b>	149265-4
<b>Safety Data Sheet</b>	Yes