

Model 1000 Lock Down Hatch

Table of Contents

Introduction.....1
 Principle of Operation.....1
 Installation.....1
 Specifications.....2
 Maintenance.....2

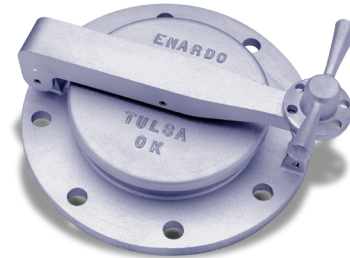


Figure 1. Model 1000 Lock Down Hatch

access for gauging, sampling, temperature measurement or inspection.

WARNING

Failure to follow these instructions or to properly install and maintain this equipment could result in an explosion, fire and/or chemical contamination causing property damage and personal injury or death.

Enardo lock down hatch must be installed, operated and maintained in accordance with federal, state and local codes, rules and regulations and Emerson Process Management Regulator Technologies Tulsa, LLC instructions.

Failure to correct trouble could result in a hazardous condition. Call a qualified service person to service the unit. Installation, operation and maintenance procedures performed by unqualified person may result in improper adjustment and unsafe operation. Either condition may result in equipment damage or personal injury. Only a qualified person shall install or service the lock down hatch.

Introduction

Scope of the Manual

This Instruction Manual provides instructions for installation and maintenance for the Model 1000 lock down hatch.

Product Description

The Model 1000 lock down hatch provides access for storage tanks. When closed, it assures a vapor tight seal that prevents leakage and evaporation loss. It is designed for easy installation, inspection and maintenance providing trouble free operation. Its non-sparking design provides easy

Principle of Operation

Model 1000 lock down hatches provides secure access to storage tanks without pressure or vacuum relief capability. When closed, it ensures a vapor-tight seal that prevents leakage and evaporation loss. The latch mechanism allows for the use of a padlock or security seal.

Installation

1. Install the Enardo lock down hatch on a flat surface with a base gasket and an opening with a mating API bolt pattern of 16 - 5/8 in. bolt holes on a 10 - 3/8 in. bolt circle or an 8 in. CL150 FF flange.
2. Place the base gasket on the top of the mating bolt pattern and align the hatch base with the gasket. Insert the bolts downward into the base bolt holes through the gasket and mounting deck.
3. Open the hatch and utilize the opening to gain access to the bottom of the bolts to attach the nuts. Using a socket wrench on the under side of the hatch and deck to secure the nut, tighten the bolts until secured.

Note

Do not overtighten. Retighten clockwise to secure completely.

4. Close the lid and the installation is complete.

Model 1000

Specifications

The Specifications table lists the specifications for the Model 1000 lock down hatch.

| | |
|--|--|
| Bolt Pattern 8 in. CL150 8 in. API | Optional Equipment Special application gasketing, bolt and gasket set, base gasket only or non-corrosive coating foot pedal operator |
| Material Construction Aluminum base, arm and lid closed cell sponge Neoprene (CR) gaskets | Approximate Shipping Weight 20 lbs / 9 kg |

Maintenance

Perform a scheduled maintenance every six (6) months and more frequently in corrosive or dusty atmospheres. To perform normal maintenance, inspect lid gasket and base gasket. Under average operating conditions, replace the lid gasket once a year. Replace the base gasket when a leak is noticed on the tank deck.

To ensure efficient operation of all hatches, carefully wipe off the seats and gaskets every time the hatch is opened. This prevents accumulation of residue that can deteriorate the performance of the hatch.

Note

For parts information refer to the catalog data sheet on each model.

Lid Gasket Replacement

1. The lid gasket is the gasket in the ring groove on the underside of the lid that seats against the base lip. Remove the old gasket by peeling it from underneath the groove.
2. Thoroughly clean the groove and apply a small amount of rubber adhesive. Fit the new gasket under the groove by slowly moving the gasket into the groove around the lid.
3. Make sure that the gasket lays flat and is pushed under the lip of the retaining ring groove.

Note

Replace only with Enardo replacement gaskets as the gasket material is specially designed for hatch service and not commonly available.

Emerson Process Management Regulator Technologies Tulsa, LLC

9932 East 58th Street
Tulsa, OK 74146-6411

Tel: +1 918 662 6161
Fax: +1 918 662 0004

For further information visit www.enardo.com

The Emerson logo is a trademark and service mark of Emerson Electric Co. All other marks are the property of their prospective owners. Enardo is a mark owned by Regulator Technologies Tulsa, LLC, a business of Emerson Process Management.

The contents of this publication are presented for informational purposes only, and while every effort has been made to ensure their accuracy, they are not to be construed as warranties or guarantees, express or implied, regarding the products or services described herein or their use or applicability. We reserve the right to modify or improve the designs or specifications of such products at any time without notice.

Emerson Process Management Regulator Technologies Tulsa, LLC does not assume responsibility for the selection, use or maintenance of any product. Responsibility for proper selection, use and maintenance of any Emerson Process Management Regulator Technologies Tulsa, LLC product remains solely with the purchaser.