

## E2573 | **BOTTOM HOSE LOADING ARM WITH COUNTERWEIGHT BALANCE**



Introducing the Emco Wheaton range of Standard Loading Arms. Each of these arms is available as configured by ordering the specific part number as listed. The Standard Loading Arms process is created to bypass specific Engineering approval through the use of standard drawings and specifications. Customers do not need to "sign-off" on an approval drawing and orders using these part numbers will proceed directly to production.

The E2573 Bottom Hose Loading Arm With Counterweight Balance is designed specifically for:

- Three or more products are loaded simultaneously and multiple crossover of arms may be required.
- API recommended bottom loading envelope.

### **Materials and Standard Equipment**

- The standard unit features carbon steel Schedule 40 material.
- Standard available seal material: Viton.
- Standard in nominal pipe diameter is 4 inches.
- Counter weight balance design is durable, cost effective and easy to adjust and operate.
- Base swivel assembly features the incomparable Emco Wheaton D2000 series swivel joints with hardened ball bearing raceways, H-Block sealing system - isolating raceways from liquid contact - and easy infrequent service requirements that will reduce the lifecycle cost of your loading system.
- Accessories are not included and must be ordered separately (i.e. hose, outboard swivels, spacer spools, API Couplers, etc.).

### **Specifications**

- Emco Wheaton standard paint system Du Pont Corlar 2.1 Standard gray.
- Standard welding per ASME B31.3 specification and per Emco Wheaton welding specification ES-8.
- Air test 5-80 psi, conforming to Emco Wheaton standard procedure.
- Standard arm lengths are as noted.
- Pressure drop and flow rate calculations available upon request.
- Standard Emco Wheaton / Gardner Denver Commercial Terms and Conditions and Warranties apply to all orders (Complete text available upon request).

**[www.emcowheaton.com](http://www.emcowheaton.com)**

**[assist@emcowheaton.com](mailto:assist@emcowheaton.com)**

Emco Wheaton USA  
9111 Jackrabbit Road • Houston • Texas  
77095 • USA  
Phone 281 856 1300 | Fax 281 856 1325

# E2573 | BOTTOM HOSE LOADING ARM WITH COUNTERWEIGHT BALANCE

PART#	DIMENSIONS		COUNTERWEIGHTS
E2573-837	C = 78"	A = 38"	2 Weights
E2573-838	C = 90"	A = 45"	2 Weights
E2573-839	C = 114"	A = 57"	2 Weights
E2573-856	C = 102"	A = 45"	2 Weights
E2573-841	C = 78"	A = 38"	4 Weights
E2573-842	C = 90"	A = 45"	4 Weights
E2573-843	C = 114"	A = 57"	4 Weights
E2573-840	C = 102"	A = 45"	4 Weights

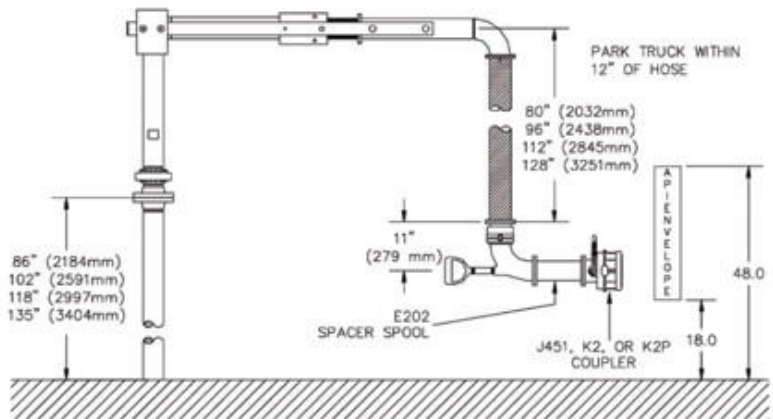
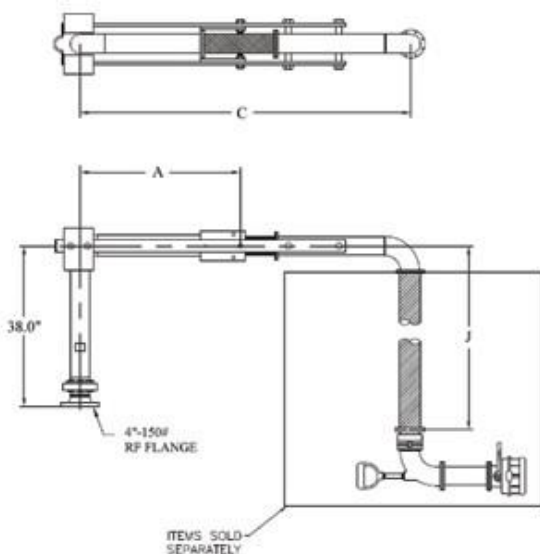
**NOTES:**

If SB Hose Dim < 105" or DB Hose Dim < 92", then 2 weights

If SB Hose Dim > 105" or DB Hose Dim > 92", then 4 weights

Hose Dim = Center of apex elbow to bottom TTMA flange

W



[www.emcowheaton.com](http://www.emcowheaton.com)

[assist@emcowheaton.com](mailto:assist@emcowheaton.com)

Emco Wheaton USA  
9111 Jackrabbit Road • Houston • Texas  
77095 • USA  
Phone 281 856 1300 | Fax 281 856 1325