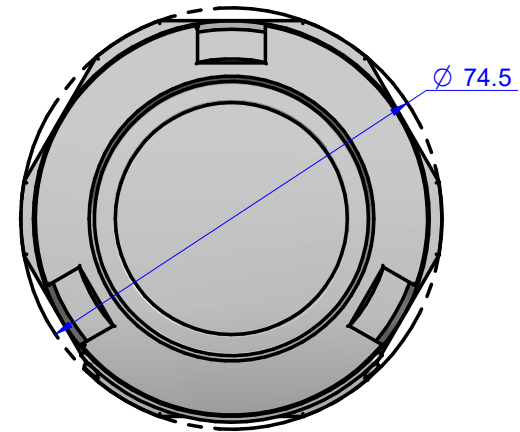
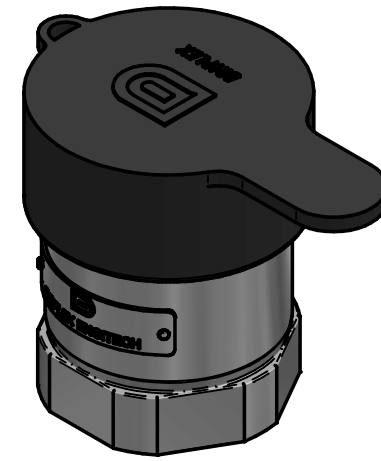
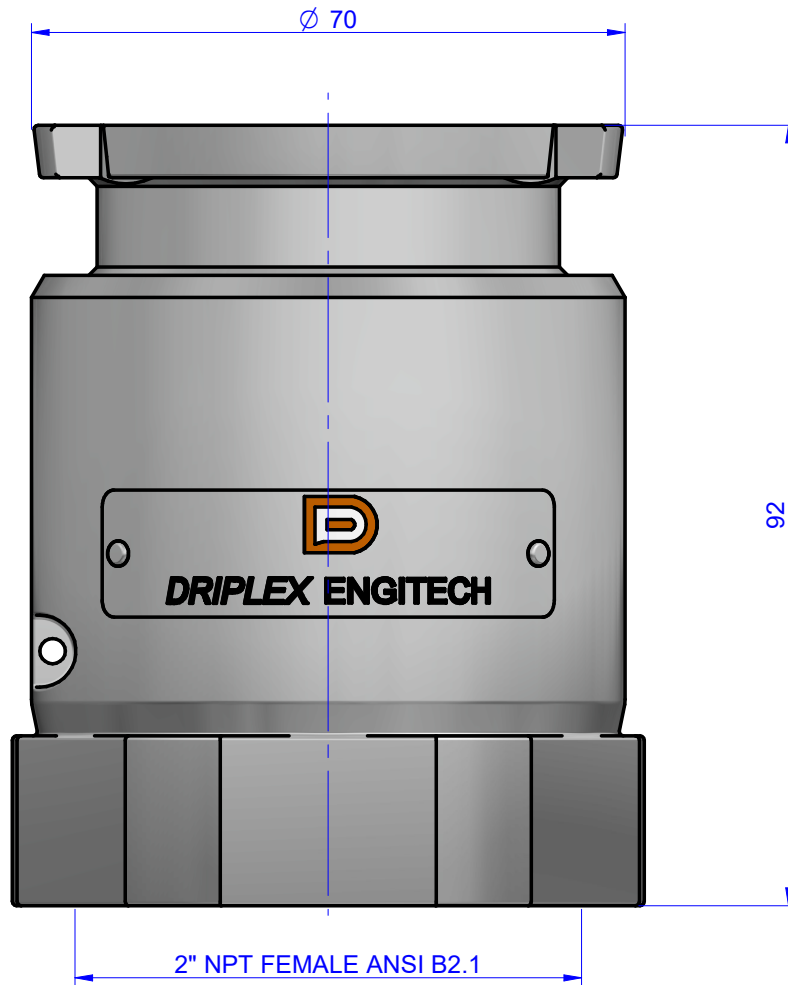


ALL DIMENSIONS ARE IN MM  
DO NOT SCALE THE DRAWING

ALL OVER  
N8



Weight : 0.7 kg  
Working Pressure : 10 bar  
Testing Pressure : 15 bar

**INSTRUCTION :-**  
1) All unspecified sharp edges to be 0.2X45° Chf..  
2) All HOLES & PCD maintain within tolerance  $\sqrt{0.03}$   $\sqrt{0.02}$   
3) Please refer general tolerance wherever tolerance not mentioned.  
4) All finished dimension to be maintained after surface treatment.

**NOTE :-**  
HEAT-TREATMENT :- N.A.  
SURFACE-TREATMENT :-N.A.

QTY.:- 01 No.

General Tolerance  
For Machining : ISO 2768- mK  
weldment: ISO 13920-AE

**DRIPLEX ENGITECH**

COUPLING :- 2T-AV-6-1-0

TITLE :-  
2" DDC TU ASSEMBLY

DRG.NO :- 2T-AV-6-1-0

MAT. :- ALUMINIUM

IN	▽▽▽▽				▽▽		▽			~			
	0.012/	0.025/	0.05/	0.1/	0.2/	0.4/	0.8/	1.6/	3.2/	6.3/	12.5/	25/	50/
GRADES	N1	N2	N3	N4	N5	N6	N7	N8	N9	N10	N11	N12	

REV.	DESCRIPTION	INFORMED BY	DATE	REVISION BY

	NAME	SIGN	DATE
DRAWN	AMB		18/07/20
CHECKED	JMJ		18/07/20
APPROVED	VVM		18/07/20

REF. DRG. NO.:	ISO 128
REV. 00	

8 7 6 5 4 3 2 1