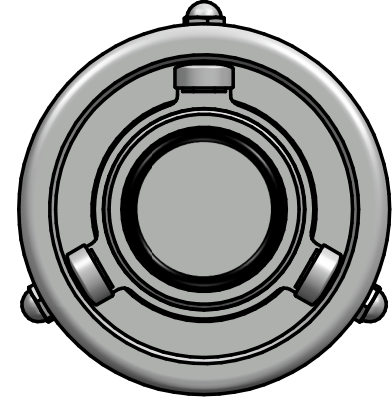
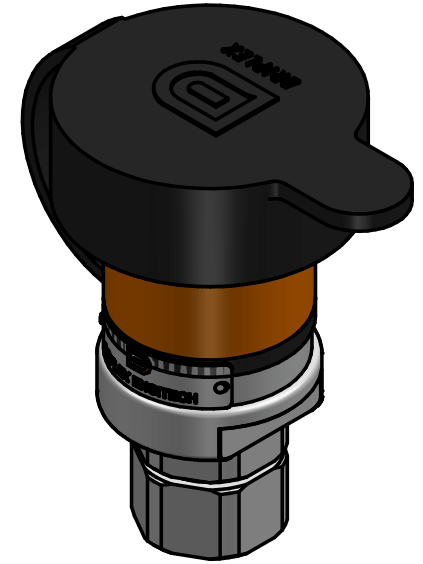
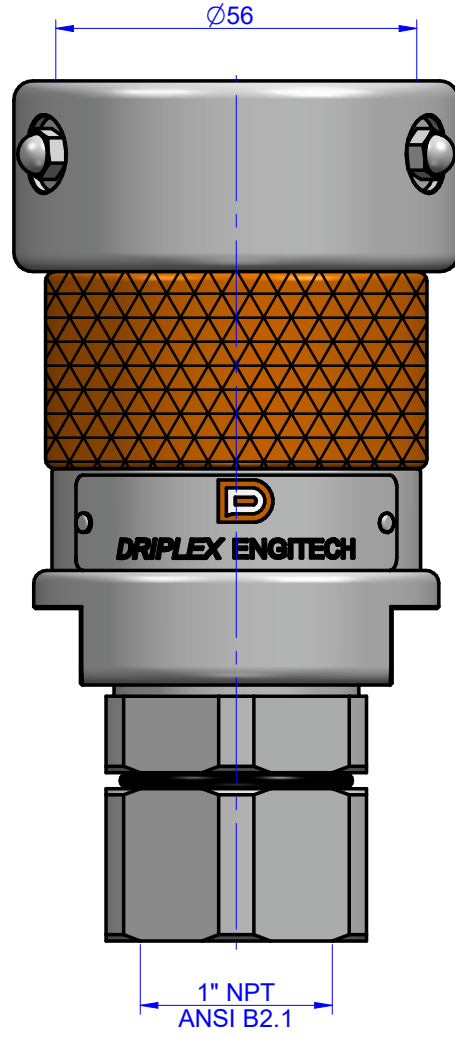


ALL DIMENSIONS ARE IN MM
DO NOT SCALE THE DRAWING



Weight : 1.9 Kg.
Working Pressure : 25 Bar
Testing Pressure : 37.5 Bar

INSTRUCTION :-
1) All unspecified sharp edges to be 0.2X45° Chf..
2) All HOLES & PCD maintain within tolerance ± 0.05 ≤ 0.02
3) Please refer general tolerance wherever tolerance not mentioned.
4) All finished dimension to be maintained after surface treatment.

NOTE :-
HEAT-TREATMENT :- N.A.
SURFACE-TREATMENT :- N.A.

QTY.:- 01 No.

General Tolerance
For Machining : ISO 2768- mK
weldment: ISO 13920-AE

DRIPLEX ENGITECH

COUPLING :- 1H-SV-2-1-0

SURFACE FINISH	▽▽▽▽	▽▽▽	▽▽	▽	~
	0.012/ 0.025/ 0.05/ 0.1/ 0.2/ 0.4/ 0.8/ 1.6/ 3.2/ 6.3/ 12.5/ 25/ 50	N1 N2 N3 N4	N5 N6	N7 N8 N9	N10 N11 N12

REV.	DESCRIPTION	INFORMED BY	DATE	REVISION BY

NAME	SIGN	DATE
DRAWN AMB		19/07/21
CHECKED JMJ		19/07/21
APPROVED VVM		19/07/21

TITLE :- 1" DDC HU ASSEMBLY

F:\02 DESIGN (final)\02. TODO MATIC DRAWINGS\1" COUPLING\HU ASSEMBLY\1H-SC-13-1-0_FOR QUOTE.dft

REF. DRG. NO. :-
REV. 00

DRG.NO :- 1H-SV-2-1-0
MAT. :- STAINLESS STEEL

