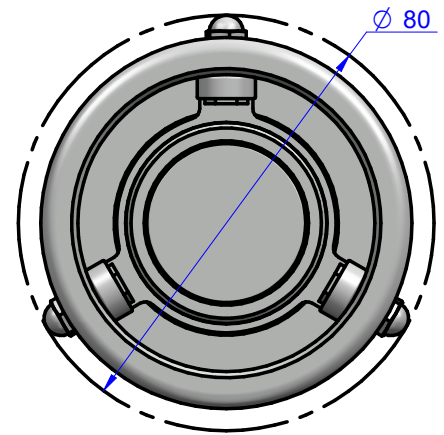
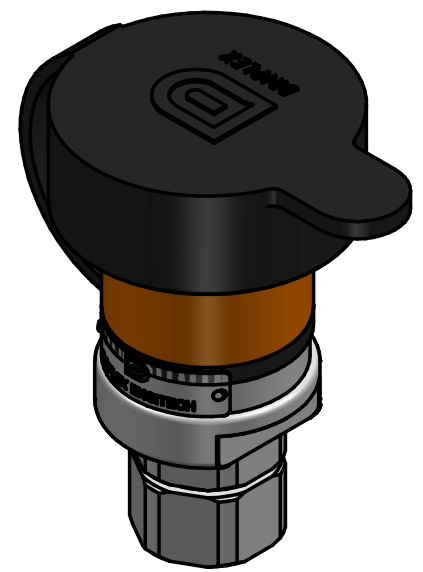
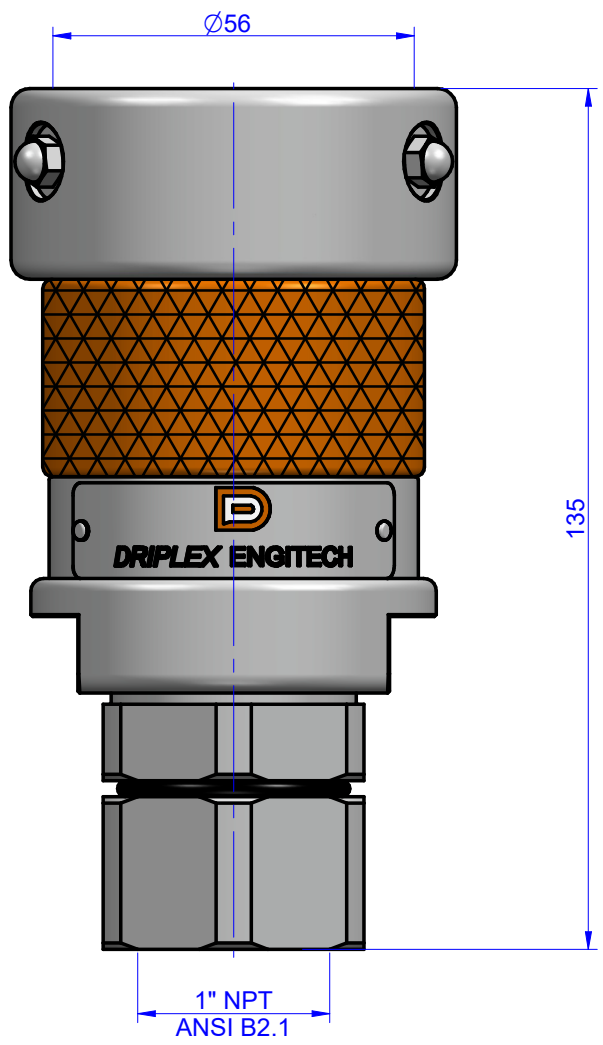


ALL DIMENSIONS ARE IN MM
DO NOT SCALE THE DRAWING



Weight : 0.9 Kg.
Working Pressure : 10 Bar
Testing Pressure : 15 Bar

INSTRUCTION :-
1) All unspecified sharp edges to be 0.2X45° Chf..
2) All HOLES & PCD maintain within tolerance ± 0.05 $\angle 0.02$
3) Please refer general tolerance wherever tolerance not mentioned.
4) All finished dimension to be maintained after surface treatment.

NOTE :-
HEAT-TREATMENT :- N.A.
SURFACE-TREATMENT :- N.A.

QTY.:- 01 No.
General Tolerance
For Machining : ISO 2768- mK
weldment: ISO 13920-AE

		DRIPLEX ENGITECH	
DRAWN		NAME	SIGN
CHECKED		DATE	DATE
APPROVED		DATE	
REF. DRG. NO.:		DRG.NO :- 1H-AV-2-1-0	
REV. 00		TITLE :- 1" DDC HU ASSEMBLY	
ISO 128		MAT. :- ALUMINIUM	

SURFACE FINISH	IN	$\nabla 0.012$	$\nabla 0.025$	$\nabla 0.05$	$\nabla 0.1$	$\nabla 0.2$	$\nabla 0.4$	$\nabla 0.8$	$\nabla 1.6$	$\nabla 3.2$	$\nabla 6.3$	$\nabla 12.5$	$\nabla 25$	$\nabla 50$
	GRADES	N1	N2	N3	N4	N5	N6	N7	N8	N9	N10	N11	N12	

REV.	DESCRIPTION	INFORMED BY	DATE	REVISION BY