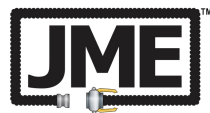




# Engineered Product Reference Guide



A John M. Ellsworth Company

800-333-3331 **PHONE**  
info@jmesales.com **E-MAIL**  
www.JMEsales.com **WEB**

B45-Series Air Blow Check Valve



The B45-Series Air Blow Check Valve is used in sanitary processes to evacuate product or inject clean air or gas into the system.

It can be used in combination with the HYC Y-Ball Check Valve.

Application

- They are found in the food processing, beverage, dairy, personal care, winery, brewery, pet product, and industrial markets.

Sizes

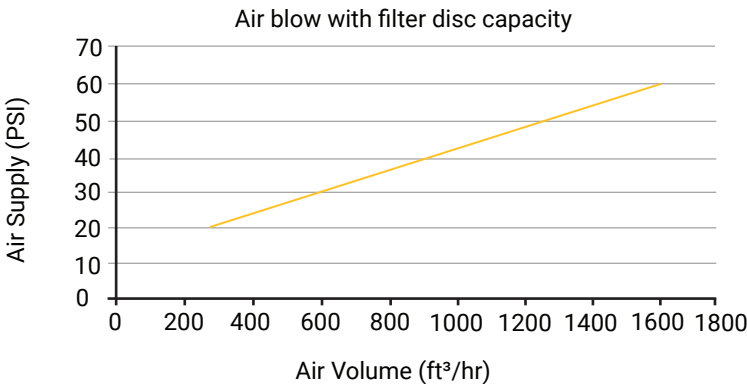
- 1-1/2" to 4"

Specifications

- Standard connections
  - Clamp to process
- Air connections
  - 1/4" quick connect plug
  - 1/2" NPT cap
  - 1" hose barb
  - Air relief cap
- Valve data
  - Maximum pressure: **145 PSI**
  - Maximum operating temperature: **212°F (100°C)**
  - Cracking pressure: **9 PSI**
  - Capacity: see chart below
  - Sizing: see chart below
- Materials of construction
  - Product contact metal components: 316L stainless steel
  - Non-product contact metal components: 304 stainless steel
  - Product contact seals: EPDM
- Surface finish
  - Product contact metal components:  $Ra \leq 32$



Capacity Chart



Sizing Chart

Ball Check Valve Size	Air Blow Check Valve Size
1-1/2"	2"
2"	2-1/2"
2-1/2"	3"
3"	4"

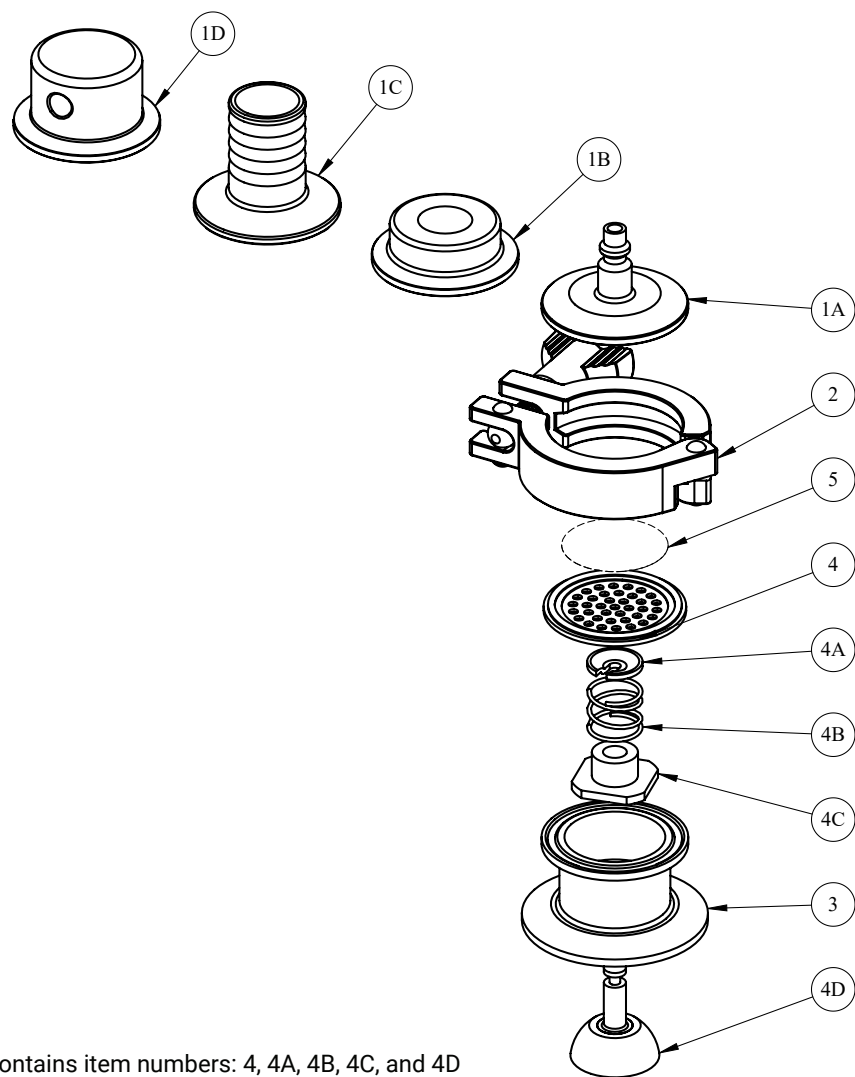
NOTE: When using air blow check valves with ball check valves, refer to the sizing chart above.

## B45-Series Air Blow Check Valve - Part Number Key

B45-Series Air Blow Check Valve Part Number Key Example: B45AB-R100150		Series	End Connection		Material	Size
		B45	AB	-	R	100150
<b>Series</b>	<b>Code</b>	←	←	←	←	←
B45	B45					
<b>End Connections</b>	<b>Code</b>					
1/4" male air line quick connect	AB					
1/2" NPT cap	BC					
1" hose barb	CC					
Air relief cap	AR					
<b>Material</b>	<b>Code</b>					
316L stainless steel/EPDM	R					
<b>Size</b>	<b>Code</b>					
1-1/2"	100150					
2"	200					
2-1/2"	250					
3"	300					
4"	400					

NOTE: can only be connected to 1-1/2" ferrule

B45-Series Air Blow Check Valve - Bill of Materials



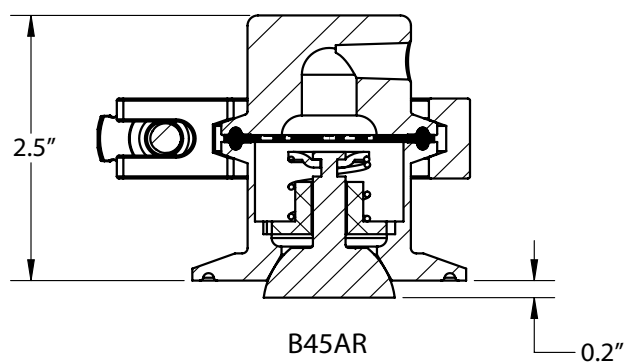
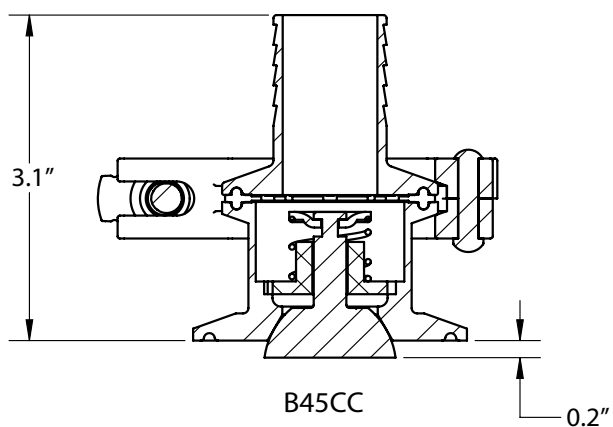
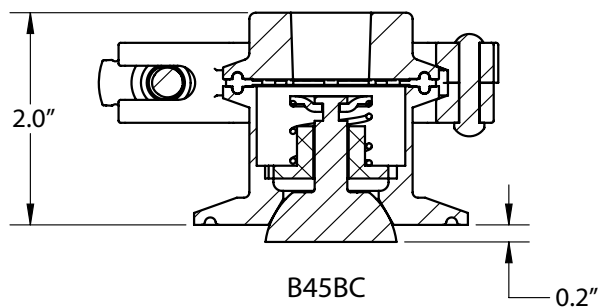
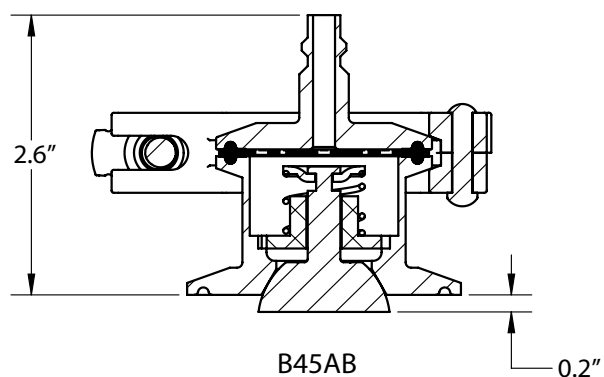
Repair Kit: B45AB-RK contains item numbers: 4, 4A, 4B, 4C, and 4D

Item	Valve Size	Part #	Description	Material	Qty.
1A	all	B16AC-G150	1/4" air line quick connect	316L stainless steel	1
1B	all	B23BMP-R100	1/2" NPT cap	316L stainless steel	1
1C	all	14MPHR-R100	1" hose barb	316L stainless steel	1
1D	all	HAV-4A	1/8" NPT cap	316L stainless steel	1
2	all	13MHM100-150SN	single pin clamp	CF8	1
3	1" to 1-1/2"	B45AB-3-100150	valve body	316L stainless steel	1
	2"	B45AB-3-200			
	2-1/2"	B45AB-3-250			
	3"	B45AB-3-300			
	4"	B45AB-3-400			
4	all	B45AB-4	perforated disc	316L stainless steel/EPDM	1
4A	all	B45AB-4A	spring retainer	304 stainless steel	1
4B	all	B45AB-4B	spring	304 stainless steel	1
4C	all	B45AB-4C	stem guide	nylon	1
4D	all	B45AB-4D	stem and plug	316L stainless steel/EPDM	1

Filter discs (optional) must be used when installed for Accepted Practice 3A 604-05, supplying air under pressure in contact with milk, milk products, and product contact.

5	all	B45ABFD150	optional filter disc (pack of 50)	1 micron filter	1
		B45ABFD150-200	optional filter disc (pack of 200)		

## B45-Series Air Blow Check Valve - Dimensions



Notes

### Limited Warranty

DIXON VALVE & COUPLING COMPANY, LLC (herein called "Dixon") warrants the products described herein and manufactured by Dixon to be free from defects in material and workmanship for a period of one (1) year from date of shipment by Dixon under normal use and service. Its sole obligation under this warranty being limited to repairing or replacing, as hereinafter provided, at its option any product found to Dixon's satisfaction to be defective upon examination by it, provided that such product shall be returned for inspection to Dixon's factory within three (3) months after discovery of the defect. The repair or replacement of defective products will be made without charge for parts or labor. This warranty shall not apply to: (a) parts or products not manufactured by Dixon, the warranty of such items being limited to the actual warranty extended to Dixon by its supplier; (b) any product that has been subject to abuse, negligence, accident, or misapplication; (c) any product altered or repaired by others than Dixon; and (d) normal maintenance services and the replacement of service items (such as washers, gaskets, and lubricants) made in connection with such services. To the extent permitted by law, this limited warranty shall extend only to the buyer and any other person reasonably expected to use or consume the goods who is injured in person by any breach of the warranty. No action may be brought against Dixon for an alleged breach of warranty unless such action is instituted within one (1) year from the date the cause of action accrues. This limited warranty shall be construed and enforced to the fullest extent allowable by applicable law.

Other than the obligation of Dixon set forth herein, Dixon disclaims all warranties, express or implied, including but not limited to any implied warranties of merchantability or fitness for a particular purpose, and any other obligation or liability. The foregoing constitutes Dixon's sole obligation with respect to damages, whether direct, incidental, or consequential, resulting from the use or performance of the product.

Some products and sizes may be discontinued when stock is depleted or may require a minimum quantity for ordering.

### Limits of Liability

This brochure is intended as a product offering. It is not intended to be a user or technical manual. Information in this brochure is subject to change without notice. All users and distributors of products sold through this brochure should contact Dixon with questions of use, compatibilities, coupling procedures, and life of product. Our full-time engineering and test staff are always available to recommend uses and to assist distributors and users with any questions.



### Safety



Safety logos, which appear throughout our catalog, are used as a reminder that the user should carefully review for the appropriateness of the product for the media, application, and environment in which it will be used.

NOTE: Because of the health hazards associated with contamination and lead content in drinking water systems, Dixon couplings, unless otherwise specifically approved, are not recommended for potable water service and should not be used in applications where drinking water will contact the wetted surfaces of the coupling.

All Dixon products are shipped in cartons with the following warning:

**"WARNING:** This product contains lead, a chemical known to the State of California to cause cancer and birth defects or other reproductive harm."

### Trademark

Delrin® and Zytel® are registered trademarks of E.I. duPont Nemours and Company.

Kalrez® is a registered trademark of DuPont Dow Elastomers.

All other trademarks appearing in the Dixon illustrated product list are the property of their respective owners.

### Copyright

Copyright © 2023 by Dixon Valve & Coupling Company, LLC

All rights reserved. This book is copyrighted material. Use, reproduction or copying of it by anyone other than Dixon® is strictly forbidden without its express written consent.

NOTE: Reasonable care has been taken in preparing this catalog. Dixon Valve & Coupling Company, LLC reserves the right to make corrections.

