

Chicago Valves & Controls



SERIES 34

FULL PORT 3PC BALL VALVE

1000 CWP (1/4" - 2")
 800 CWP (2-1/2" - 3")
 600 CWP (4")

316 STAINLESS STEEL - ASTM A351 CF8M

CARBON STEEL - ASTM A216 WCB

STEAM RATING: 150 PSI WSP

VACUUM SERVICE TO 29"Hg

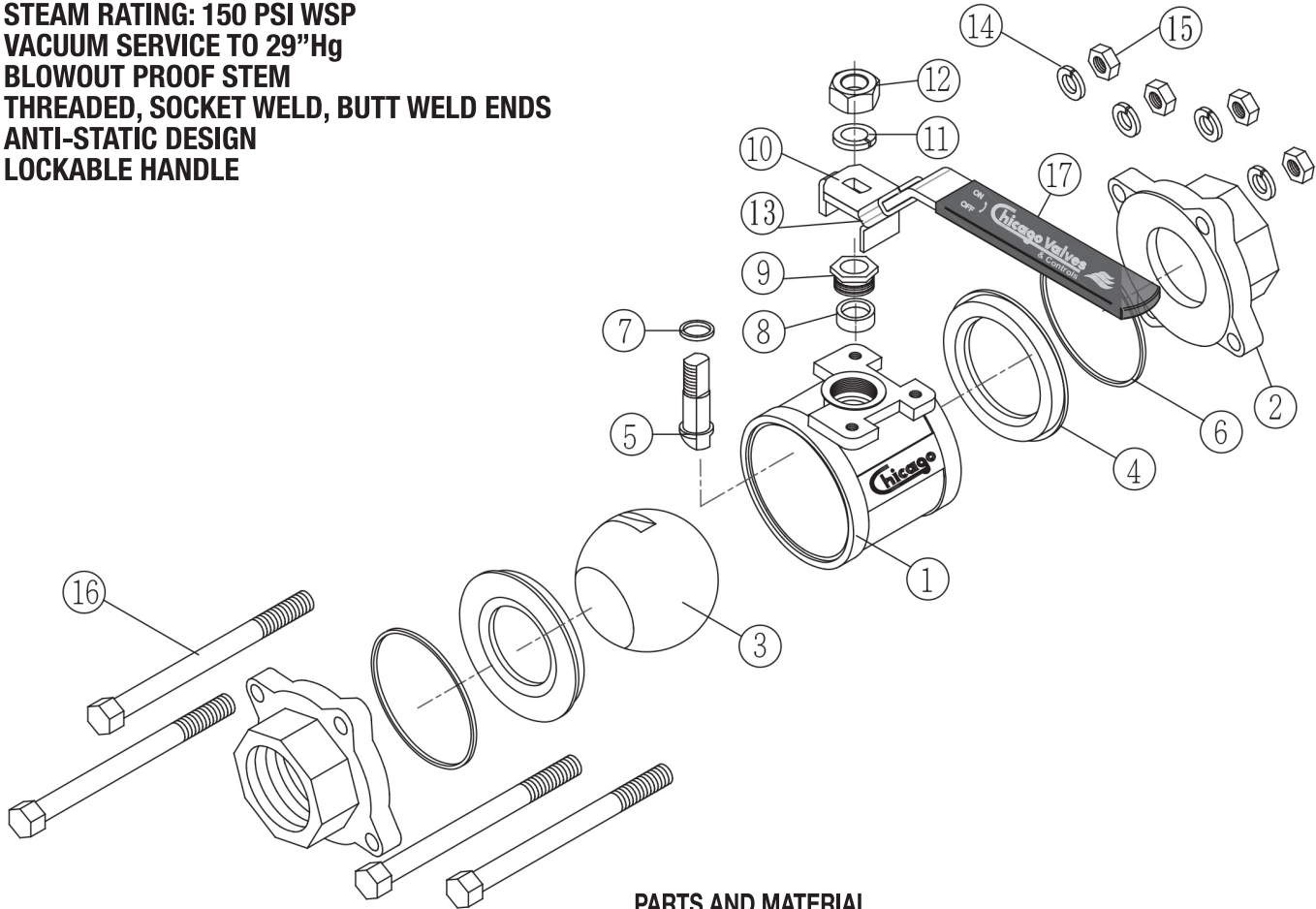
BLOWOUT PROOF STEM

THREADED, SOCKET WELD, BUTT WELD ENDS

ANTI-STATIC DESIGN

LOCKABLE HANDLE

Series 34

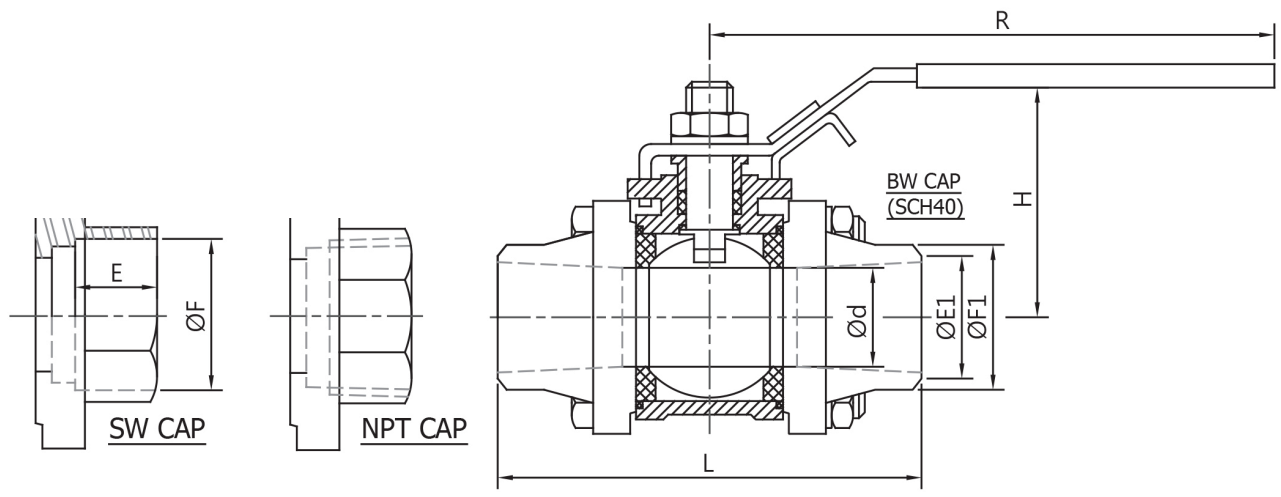


PARTS AND MATERIAL

PART NO	PART NAME	QTY	MATERIAL
1	BODY	1	CARBON STEEL ASTM A216 WCB 316 STAINLESS STEEL ASTM A351 CF8M
2	END CAP	2	CARBON STEEL ASTM A216 WCB 316 STAINLESS STEEL ASTM A351 CF8M
3	BALL	1	316 STAINLESS STEEL
4	SEAT	2	RTFE
5	STEM	1	316 STAINLESS STEEL
6	BODY SEALS	2	PTFE
7	THRUST WASHER	1	CARBON FILL PTFE
8	STEM PACKING	1	PTFE
9	GLAND PACKING	1	300 STAINLESS STEEL
10	HANDLE	1	300 STAINLESS STEEL
11	HANDLE WASHER	1	300 STAINLESS STEEL
12	HANDLE NUT	1	300 STAINLESS STEEL*
13	LOCKING DEVICE	1	300 STAINLESS STEEL
14	SPRING WASHER	4/12*	300 STAINLESS STEEL*
15	NUTS	4/12*	300 STAINLESS STEEL*
16	BODY BOLTS	4/12*	300 STAINLESS STEEL*
17	HANDLE SLEEVE	1	PVC

* 3" and 4"

Series 34



DIMENSIONS (INCHES)

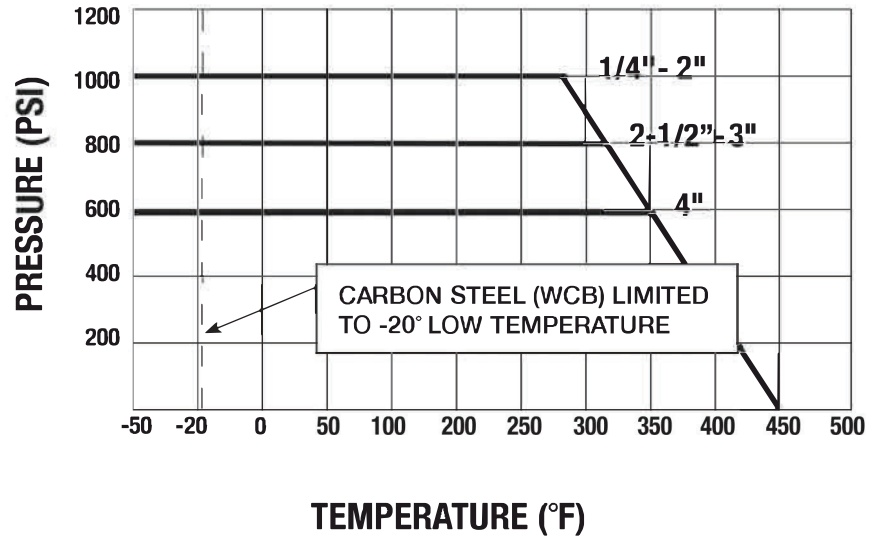
SIZE	L	d	E	F	H	R	L1 (BW)	E1	F1
1/4"	2.50	0.46	0.44	0.56	2.21	4.00	2.56	0.36	0.54
3/8"	2.50	0.50	0.44	0.69	2.21	4.00	2.56	0.49	0.68
1/2"	2.83	0.59	0.44	0.86	2.36	4.00	2.83	0.62	0.84
3/4"	3.34	0.79	0.56	1.07	2.47	5.00	3.34	0.82	1.05
1"	3.62	0.98	0.72	1.33	2.81	5.70	3.62	1.05	1.32
1-1/4"	4.33	1.26	0.72	1.68	3.08	5.70	4.33	1.38	1.66
1-1/2"	4.83	1.50	0.75	1.92	3.47	7.50	4.83	1.61	1.90
2"	5.58	2.00	0.84	2.41	3.82	7.50	5.58	2.07	2.38
2-1/2"	6.85	2.56	1.13	2.90	5.80	10.00	6.84	2.47	2.88
3"	7.60	3.00	1.25	3.54	6.23	10.00	7.57	3.07	3.50
4"	10.80	3.94	1.75	4.54	7.30	11.34	10.76	4.03	4.50

APPLICABLE STANDARDS

SHELL TEST	ASME B16.34
SEAT TEST	ASME B16.34
THREADED AND SOCKET WELD ENDS	ASME B16.11
BUTT WELD ENDS	ASME B16.25

SIZE	CV (GPM)	WEIGHT LBS.
1/4"	20	0.9
3/8"	25	0.9
1/2"	28	1.1
3/4"	50	1.8
1"	70	2.6
1-1/4"	110	4.0
1-1/2"	170	6.3
2"	395	9.7
2-1/2"	835	18.7
3"	860	29.5
4"	1780	47.5

PRESSURE-TEMPERATURE RATING 1/4"-4" SERIES 34



HOW TO ORDER

