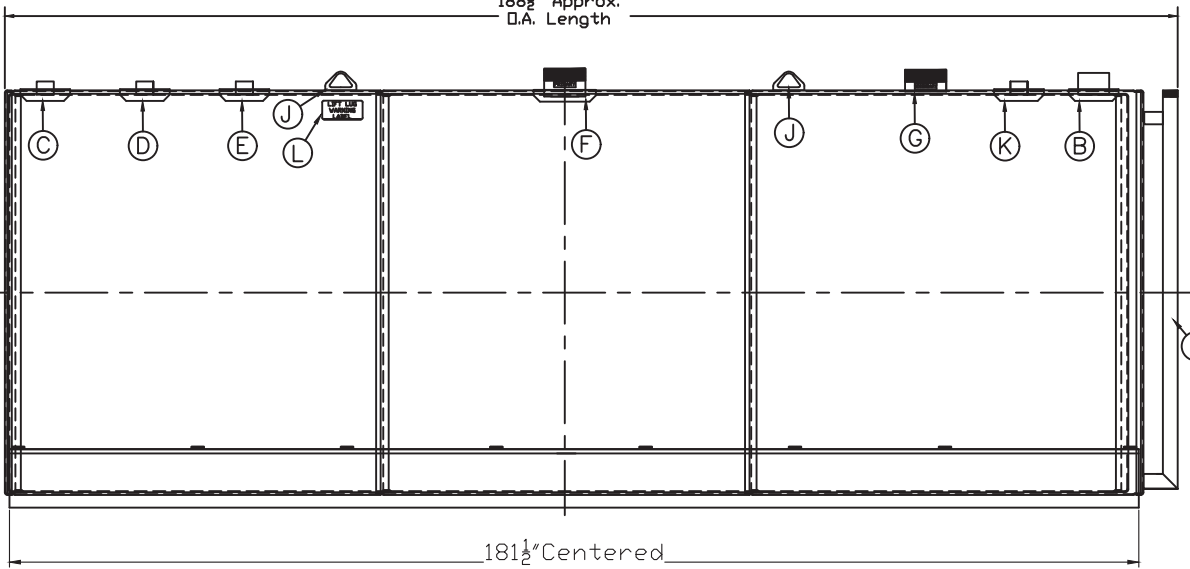


188½" Approx.
O.A. Length

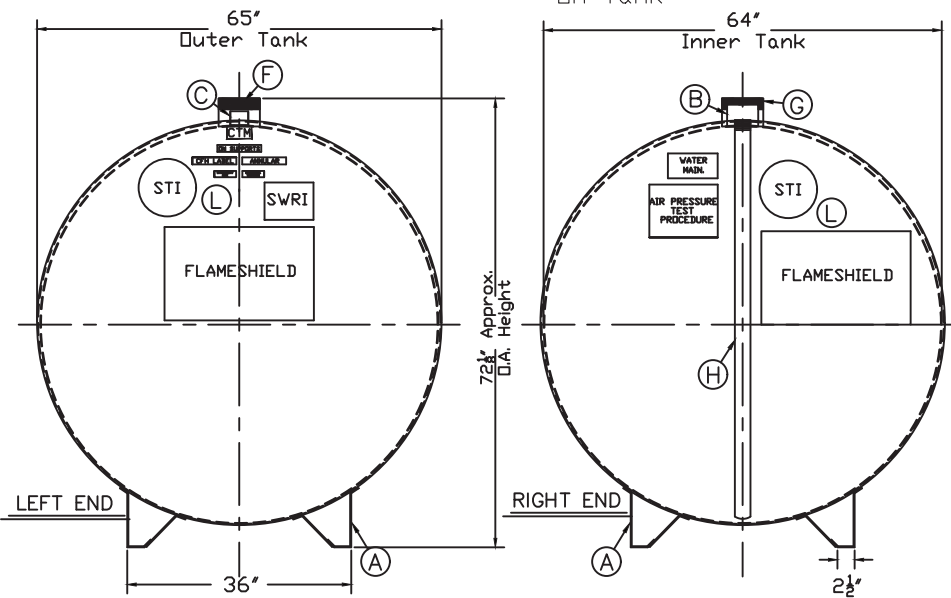


181½" Centered
On Tank

MATERIAL DESCRIPTION

MODEL	KEY	QTY	HORIZONTAL DW FLAMESHIELD SKID TANK
Outer Diameter			5'-5"
Outer Length			15'-3"
Capacity			2,500 US Gallons Nominal
Inner Gauge			Per STI Flameshield - 7 Gauge
Outer Gauge			Per STI Flameshield - 10 Gauge
Code			STI Flameshield
Supports	A	4	Skids Full Length - 7 Gauge
Fill Opening	B	1	4" 150# Full Coupling W/Repad
Pump Opening	C	1	2" 150# Full Coupling W/Repad
Gauge Opening	D	1	2" 150# Full Coupling W/Repad
Op Vent Opening	E	1	2" 150# Full Coupling W/Repad
E-Vent Opening	F	1	6" Sch40 Nipple (Inner E-Vent) W/Repad
E-Vent Opening	G	1	6" Sch40 Nipple (Outer E-Vent)
Leak Monitor	H	1	2" Monitor Pipe (MNPT)
Lift Lug	J	2	Small Lift Lug
Remote Ga. opening	K	1	2" 150# Full Coupling W/Repad
STI Labeling	L	Kit	Labeled Per STI Flameshield

TANK SHALL BE BUILT & LABELED PER STI FLAMESHIELD
UL FILE # MH17150



Surface Prep: Brush Blast
Paint: Polane White
Testing: Per STI Flameshield
Operating Pressure: Atmospheric
Estimated Dry Weight: 4575lbs

SCALE