



Sea-Lect® Check Valve CV-0400D



- Compatible with Guzzler 400 Series pumps
- Creates & maintains pump prime
- Doubles pump lift for Guzzler “400” Series pumps
- Prevents fluid backflow
- Durable, lightweight Acetal plastic
- Accommodates 1/2” - 1-1/4” hose
- Available in a wide range of hose connection types

Materials

Body *	Acetal Plastic / Gray
Valve *	Flapper: Buna-N, White (Pigment -free) Buna-N, Neoprene, Viton, EPDM, Silicone; Duckbill: Buna-N; Umbrella: Silicone
Fasteners	Stainless Steel

* In contact with fluid

Valve Options

Flapper — General purpose liquid transfer



Duckbill — For dirty liquid and sewage. Permits mounting in any position.



Umbrella — Most efficient for pumping clean liquid. Also used for air and vacuum service.



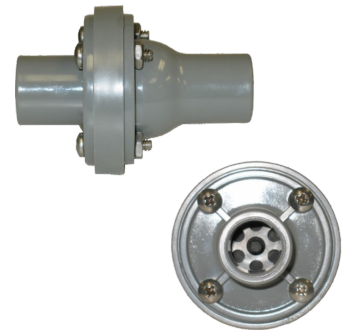
Performance

Max Pressure	20 psi (1.4 kg/cm ²)
Max Lift/Head	46 ft (14 m)
Pressure Drop (Cracking Pressure)	Flapper: 0.0 psi (0.0 kg/cm ²)
	Duckbill: 0.0 psi (0.0 kg/cm ²)
	Umbrella: 3.6 x 10 ⁻² psi (1.0 in. of water) (2.5 x 10 ⁻³ kg/cm ²)
Max Service Temp	212°F (100°C)

Available Ports

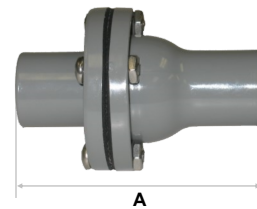
	in 1/2	5/8	3/4	1	1-1/8	1-1/4
	cm 1.27	1.60	1.91	2.54	2.86	3.18
Hose (Smooth)			•	S	•	•
NPT Female (Tapped)	•		•			
NPT Male (Threaded)			•	•		
Male Garden Hose (Threaded)			•			
Barbed			•		•	
Barbed Adapter	•	•	•			

S Standard • Optional

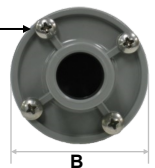


CV-0400D Check Valve equipped with umbrella valve.

Note: Dimensions shown below are for CV-0400D Check Valve equipped with flapper valve.



Note: Valve flange screws (4) to be tightened with 7-8 in-lbs of torque.



	in	cm
A	3-5/16	8.4
B	2-1/4	5.7
Weight	0.15 lb	0.07 kg

Sea-Lect® Check Valve CV-0400D



Product Model Number Nomenclature Guide

Example: CV-0400D-1-5050

- Sea-Lect Check Valve
- Model style 0400D (Acetal Plastic / Gray)
- Buna-N Flapper Valve
- 1" Smooth Hose Connections

CV – 0400D – 1 – 50 50

Sea-Lect Product	
Option	Code
Check Valve	CV

Family	
Option	Code
1" Nominal Port Size, Acetal	0400D

Valve	
Option	Code
Flapper (Buna-N)	1
Flapper (White Buna)	2
Flapper (Neoprene)	3
Flapper (Viton)	4
Flapper (EPDM)	5
Duckbill (Buna-N)	6
Umbrella (Silicone)	7

Hose Connections		
Option	Code	
	Inlet	Outlet
1/2" NPT Tapped	31	31
1/2" Barbed Adapter	37	37
5/8" Barbed Adapter	27	27
3/4" Smooth	40	40
3/4" NPT Tapped	41	41
3/4" NPT Threaded	42	42
3/4" Barbed	43	43
3/4" Male Garden Hose	46	46
3/4" Barbed Adapter	47	47
1" Smooth	50	50
1" NPT Threaded	52	52
1" Barbed	53	53
1-1/8" Smooth	60	60
1-1/8" Barbed	63	63
1-1/4" Smooth	70	70